

How to access the USB SD Card media?

How to access the USB SD Card media?

Step 1: Ensure your USB drive is properly connected to your DIR-850L

Step 2: Check USB driver/ SD card status from router's Web UI.

Step 2.1: Open your web browser and enter `http://dlinkrouter` or `http://dlinkrouter.local` or `http://192.168.0.1` into the address bar.



Step 2.2: The default username is admin and the password is blank (nothing). Click Login.



LOGIN

Login to the router :

User Name :

Password :



Step 2.3 Click on the Setup tab at the top then click Storage on the left side

STORAGE

Web File Access allows you to use a web browser to remotely access files stored on an SD card or USB storage drive plugged into the router. To use this feature, check the Enable Web File Access checkbox, then use the Admin account or create user accounts to manage access to your storage devices. After plugging in an SD card or USB storage drive, the new device will appear in the list with a link to it. You can then use this link to connect to the drive and log in with a user account.

SHAREPORT WEB ACCESS

Enable SharePort Web Access :

HTTP Access Port :

HTTPS Access Port :

Allow Remote Access :

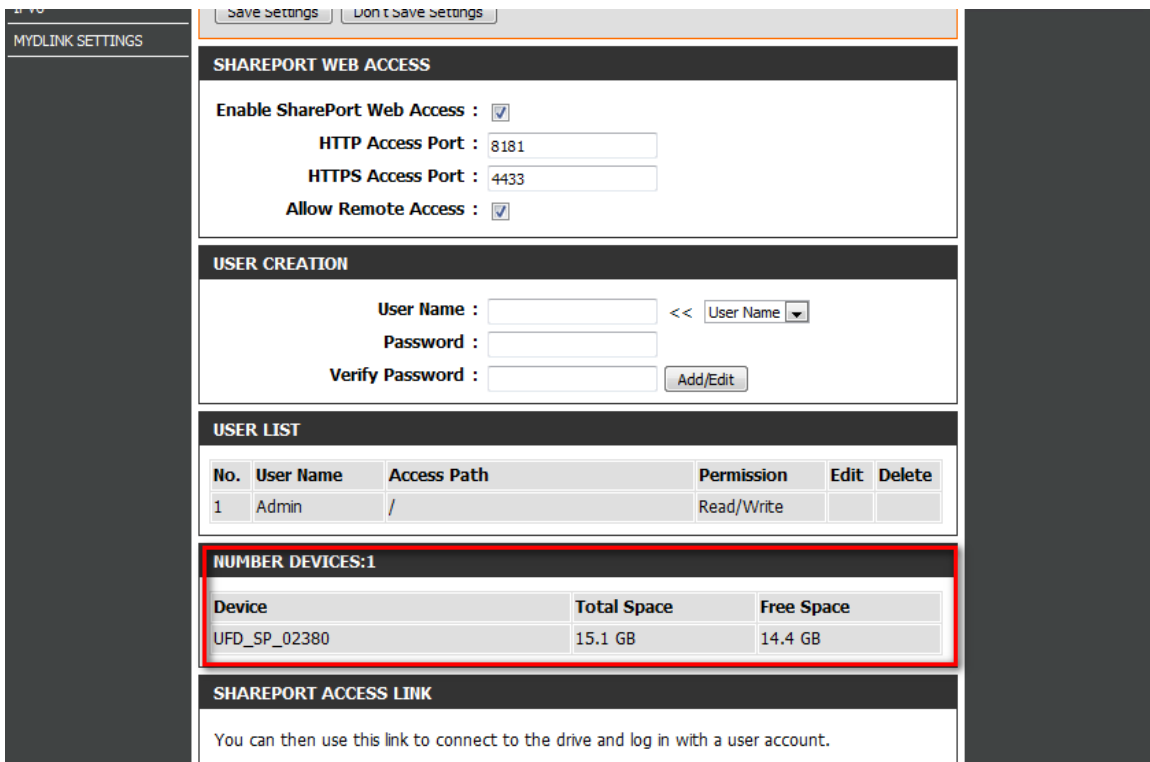
USER CREATION

User Name : <<

Password :

Step 2.4 Check the storage status

How to access the USB SD Card media?



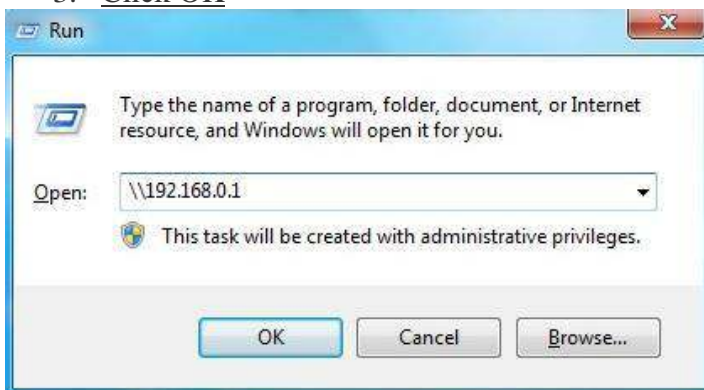
Step 3: From a computer connected to the router:

Windows XP

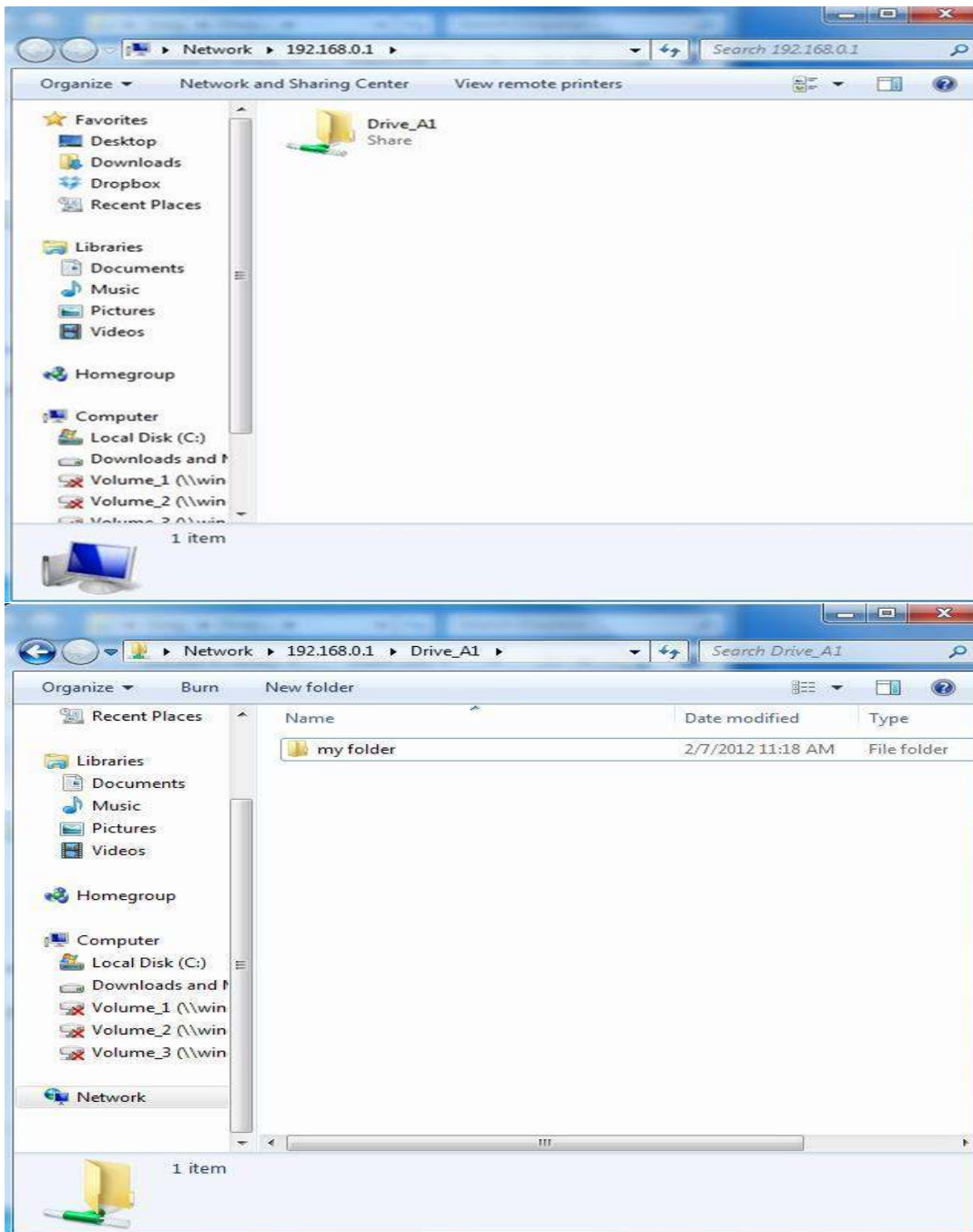
1. Click **Start** then go to **Run**
2. Type \\ followed by the IP address of the router (default is 192.168.0.1)
Example- [\\192.168.0.1](http://192.168.0.1)
3. Click OK

Windows 7

1. Click **Start** > **All Programs** > **Accessories** > **Run**
2. Type \\ followed by the IP address of the router (default is 192.168.0.1)
Example- [\\192.168.0.1](http://192.168.0.1)
3. Click OK



How to access the USB SD Card media?



MAC OSX

1. Click **Go > Connect to Server**
2. Type `smb://` followed by the IP address of the router (default is 192.168.0.1)
Example- `smb://192.168.0.1`
Click **Connect**

How to access the USB SD Card media?

Note: If prompted for password, select GUEST access

