

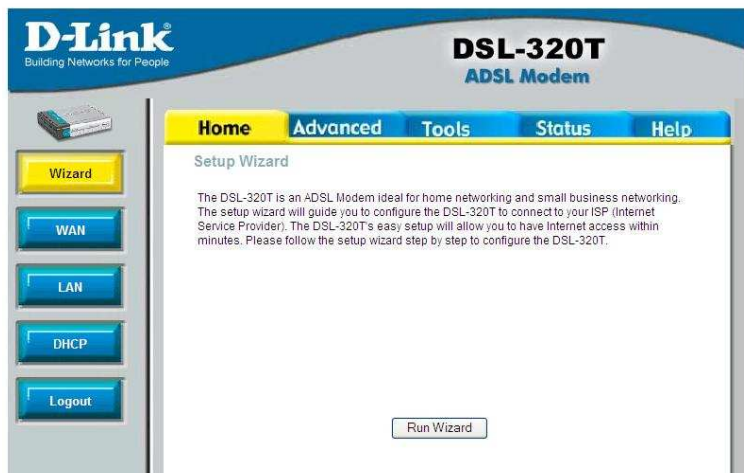
## Configuring the Modem for PPPoA

To use your Web browser to access the web pages used to set up the Modem, your computer must be configured to "Obtain an IP address automatically," that is, you must change the IP network settings of your computer so that it is a DHCP Client. If you are using Windows XP and do not know how to change your network settings, skip ahead to the section for **Configuring IP settings in Windows XP**.

- 1) Open up a browser and type in the default IP address of the DSL-320T (**192.168.1.1**)
- 2) You will then be prompted for a username and password to login to the device. Type in **admin** for the username and **admin** as the password.



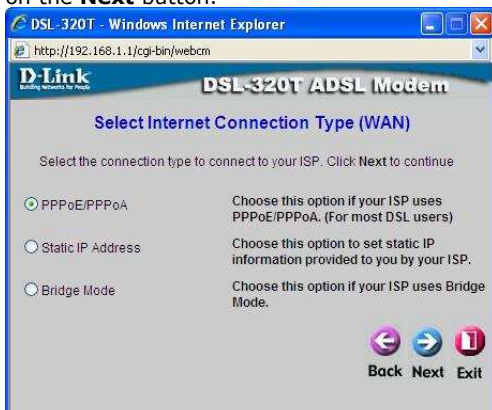
- 3) Once logged in, you will now see the DSL-320T Wizard screen. Click on the **Run Wizard** button at the bottom of the screen.



- 4) The Wizard window will now pop up. Click on the **Next** button to proceed.



- 5) The 'Select Internet Connection Type (WAN)' screen will now be shown. Select the **PPPoE/PPPoA** option. Once done, click on the **Next** button.



- 6) In the 'Set PPPoE/PPPoA' screen, enter the following:



- a. User Name – type in the login username provided by the ISP
- b. Password – enter the login password provided by the ISP
- c. VPI – The common VPI/VCI in the UK is 0/38. Default is 0.
- d. VCI – The common VPI/VCI in the UK is 0/38. Default is 38.
- e. Connection Type – The Connection Type commonly used in the UK is VC-Mux. Default is VC-Mux.

Click on the **Next** button once done.

- 7) The Setup is now complete. Click on the **Restart** button to save and reboot the configuration.



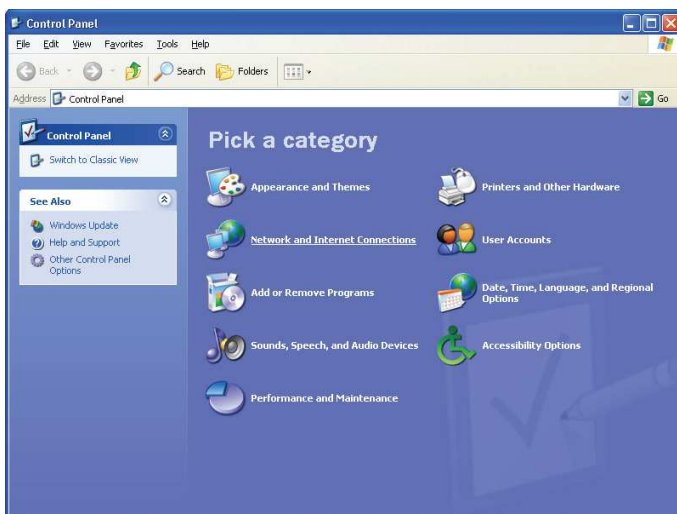
## Configuring IP Settings in Windows XP

Use the following steps to configure a computer running Windows XP to be a DHCP client.

1. From the Start menu on your desktop, go to Control Panel.

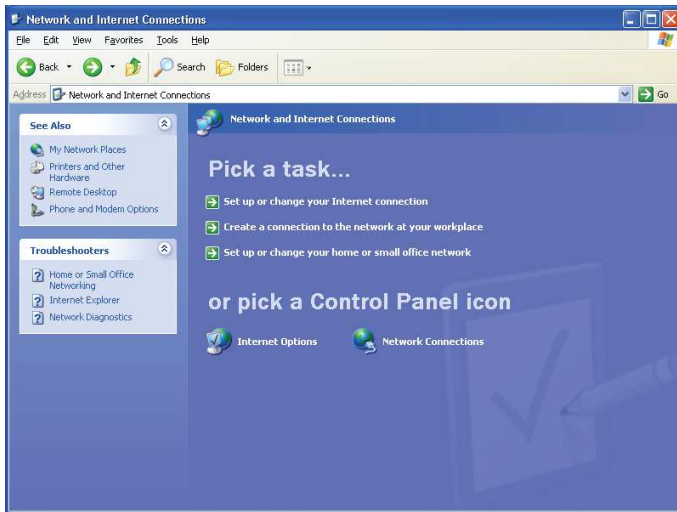


2. In the Control Panel window, click Network and Internet Connections.

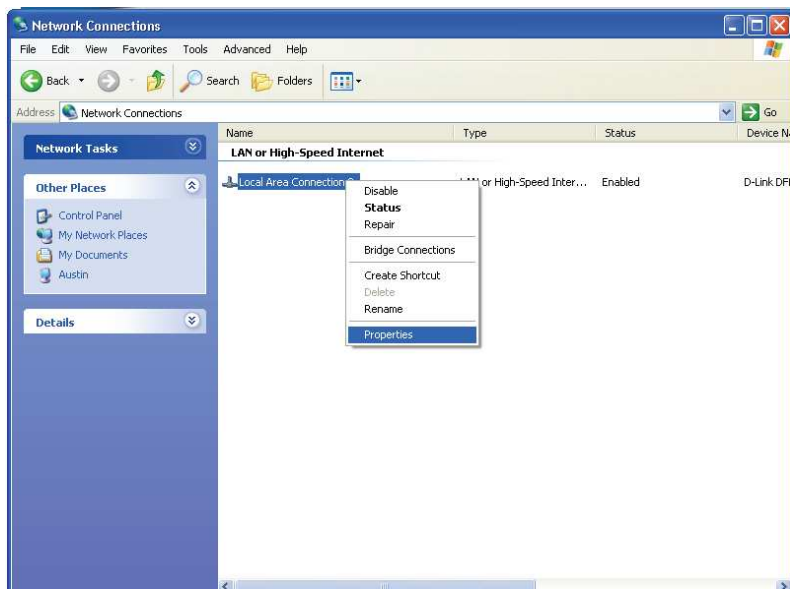


Click Network and Internet Connections. From the Start menu, go to Control Panel.

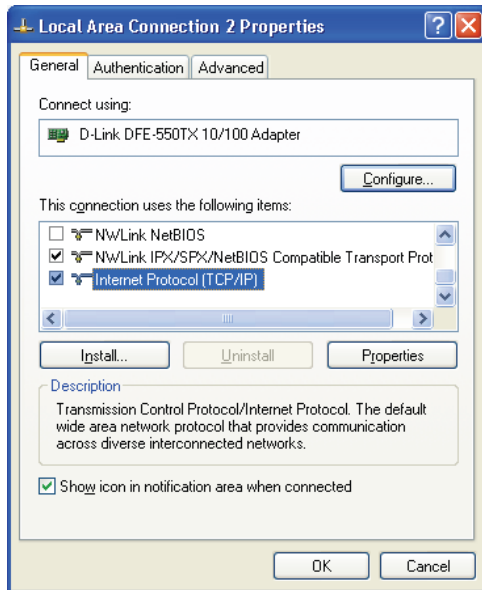
3. In the Network and Internet Connections window, click Network Connections.



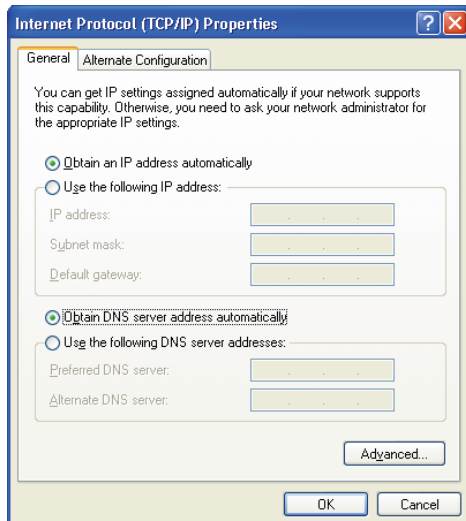
4. In the Network Connections window, right-click on Local Area Connection, then click Properties.



5. In the General tab of the Local Area Connection Properties window, highlight Internet Protocol (TCP/IP) under "This connection uses the following items:" by clicking on it once. Click on the Properties button.



6. Select "Obtain an IP address automatically" by clicking once in the circle. Click the OK button.



Your computer is now ready to use the Modem's DHCP server.