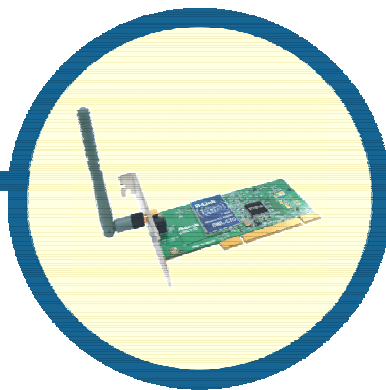


# D-Link Quick Installation Guide

This product works with the following operating system software: Windows XP, Windows 2000, Windows Me, Windows 98se



## DWL-510

2.4GHz Wireless  
PCI Adapter

## Before Your Begin

You must have at least the following:

A desktop computer with an available 32-bit PCI slot

At least a 300 MHz processor and 32 MB of memory

An 802.11b Access Point (for Infrastructure Mode) or another 802.11b wireless adapter (for Ad-Hoc; Peer-to-Peer networking mode.)

## Check Your Package Contents

These are the items included with your DWL-510 purchase:



- DWL-510 2.4GHz Wireless PCI Adapter



- CD-Rom (containing Drivers, Manual and Warranty)

# 1

## Insert the D-Link CD-ROM Into Your Computer

**Turn on the computer** and **Insert** the **D-Link Air DWL-510 Driver CD** in the CD-ROM drive.

The step-by-step instructions that follow are shown in **Windows XP**. The steps and screens are similar for the other Windows operating systems



**Do NOT install the DWL-510 PCI Adapter into your computer before installing the driver software on the D-Link CD.**

If any of the above items are missing, please contact your reseller.

# 1


## Continued...

The Install Screen will appear.

Click Install Driver/PC Utility

If the CD Autorun function does not automatically start on your computer, type "D:\Autorun.exe" If it does start, proceed to the next screen.

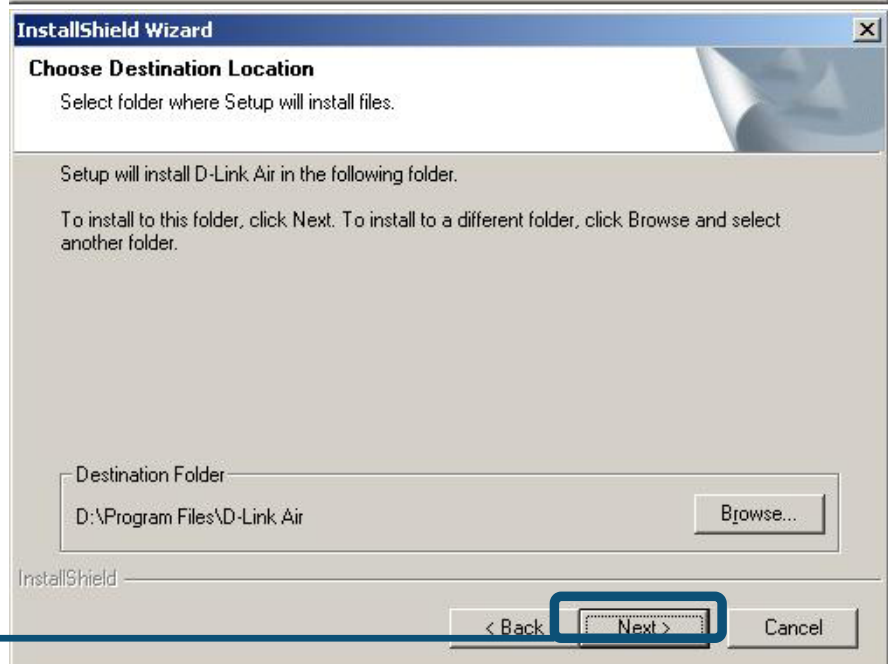
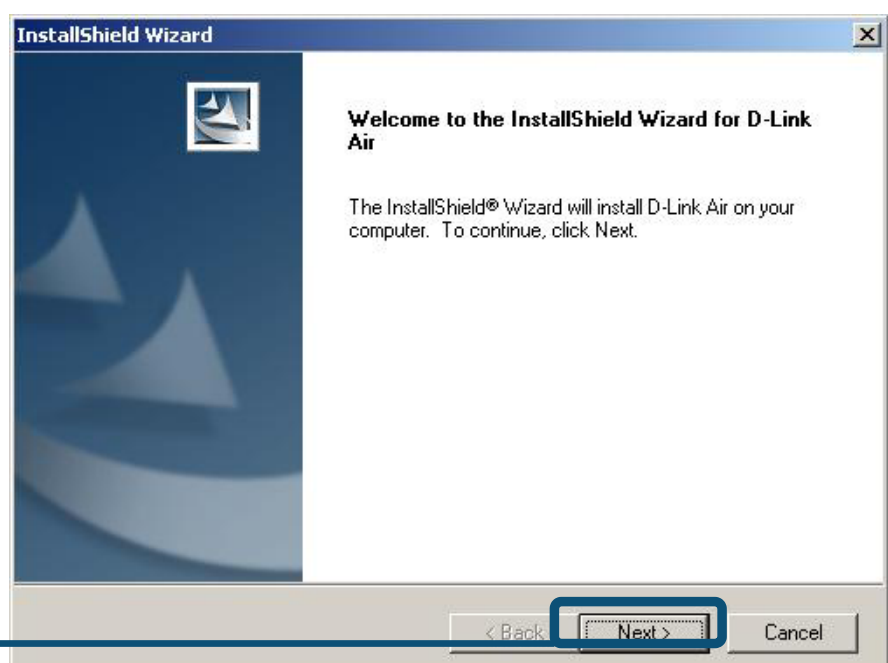
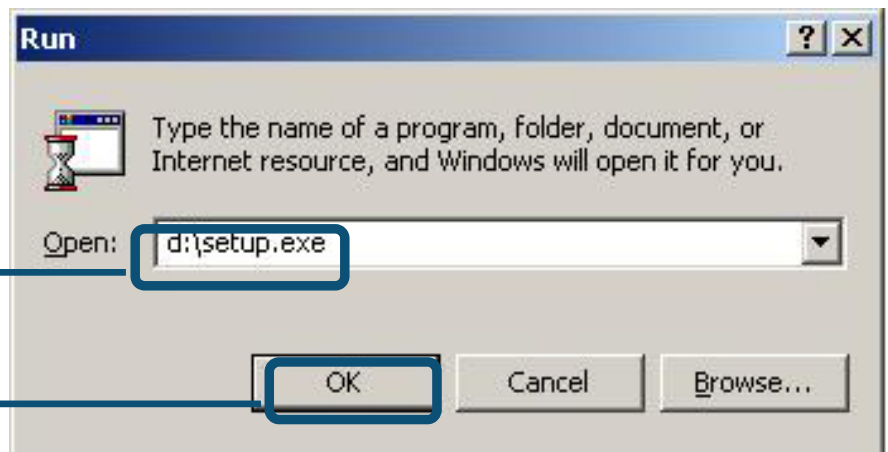
Type "D:\Autorun.exe"

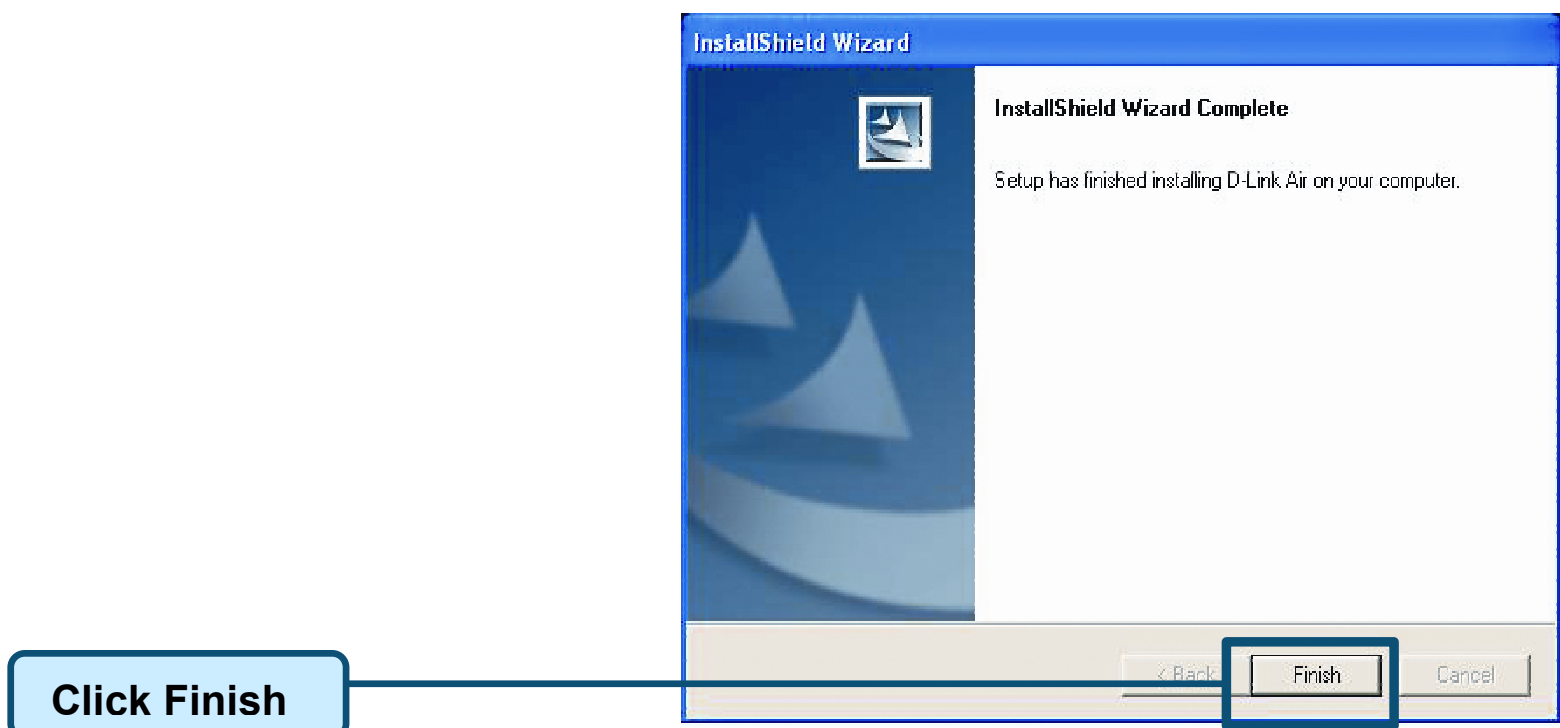
 The Letter "D" represents the letter of the CD-ROM drive. Your CD-ROM drive may be a different drive letter.

Click OK

Click Next

Click Next



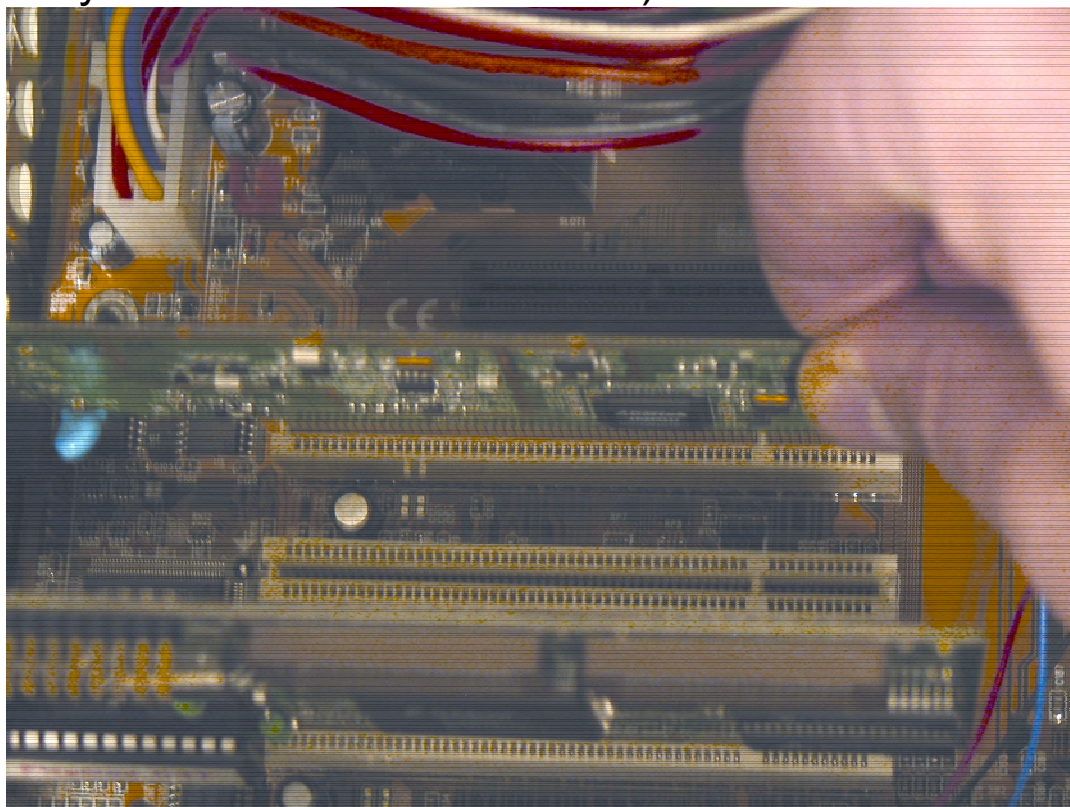


**Shut down your computer**

**2**

## Installing the DWL-510 Wireless PCI Adapter in Your Computer

- A. **Make sure to turn off your computer and unplug the power cord.** Remove the back cover of the computer.
- B. **Install the DWL-510 carefully** and firmly seat it into an available PCI slot (which is usually “white” or “cream” colored).



- C. Secure the DWL-510 back panel shield with a screw.
- D. Replace the computer's cover.
- E. Place the computer back in its normal position.
- F. Attach the DWL-510's antenna to the socket on the back panel shield.

2

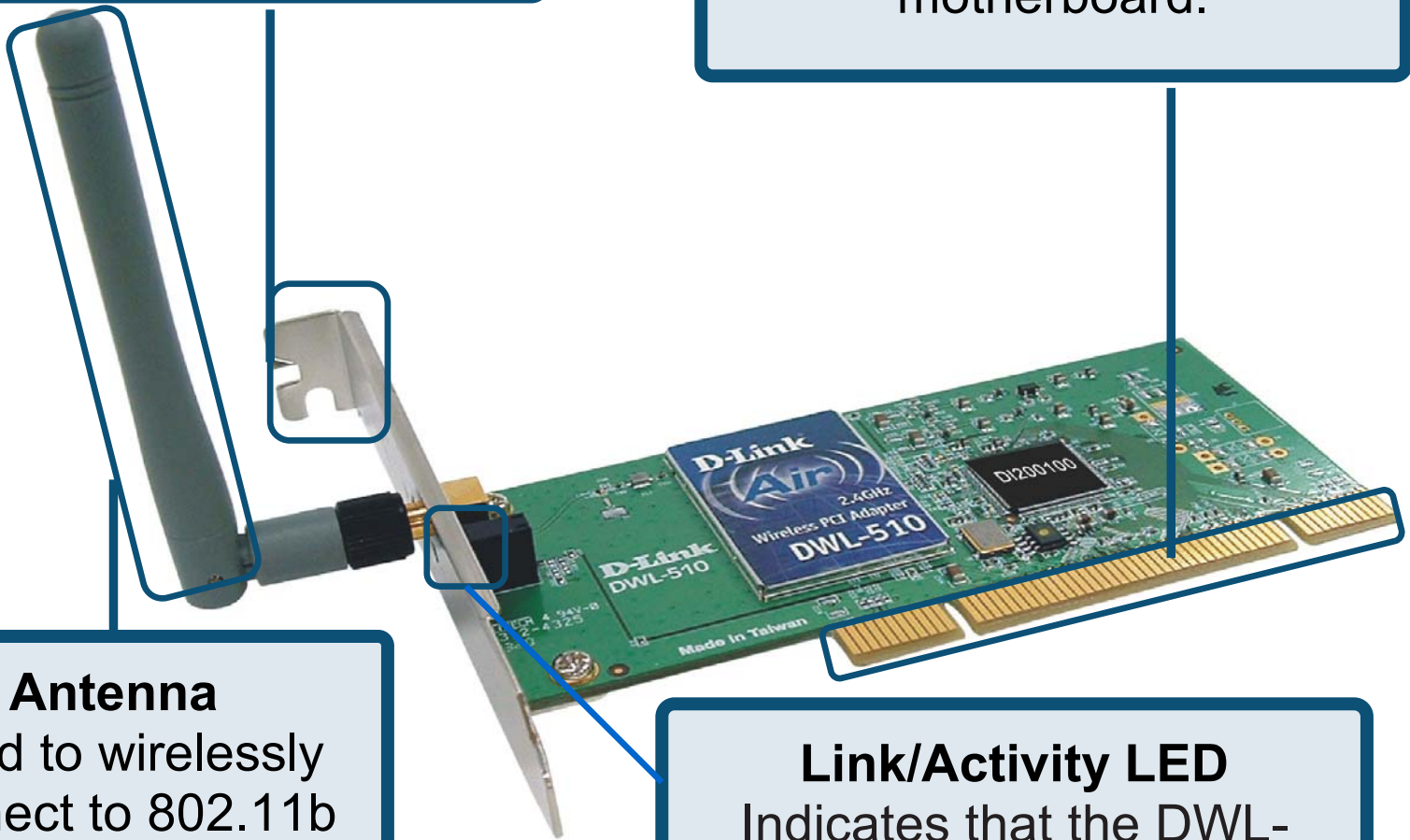
## Continued...

### Screw Mount

The screw to secure the PCI Adapter to the back of your computer will fit in this slot.

### 32-bit connector

This is the connector that fits into the PCI slot on your computer's motherboard.



### Antenna

Used to wirelessly connect to 802.11b networks.

### Link/Activity LED

Indicates that the DWL-510 is properly installed when the computer is on and blinks when data is being transmitted.

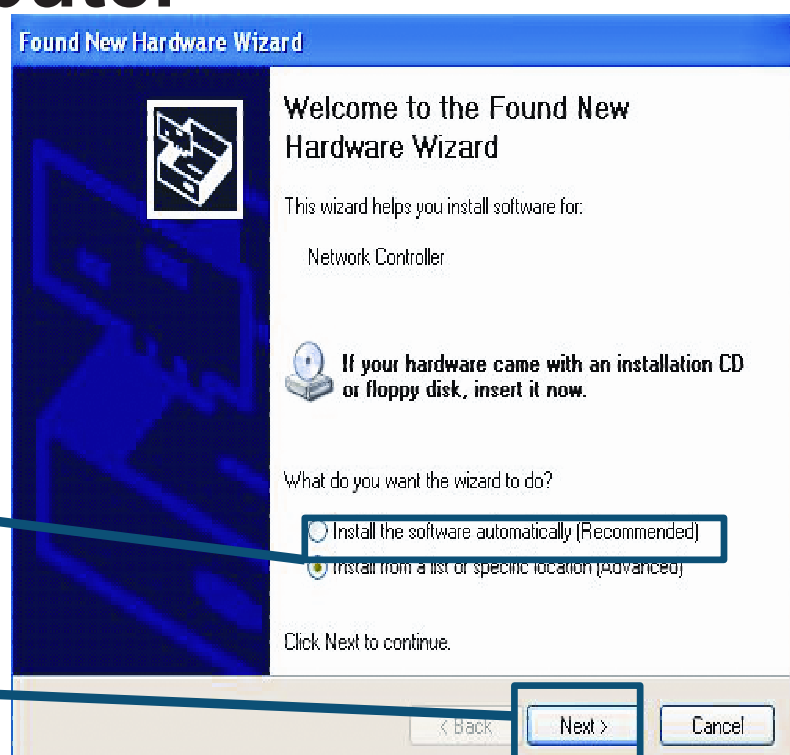
3

## Restart Your Computer

When you restart your computer this **Found New Hardware Wizard (Windows XP)** screen Will appear:

Select Install the software automatically (Recommended).

Click Next




# 3

## Continued...

 **For Windows XP: This Hardware Installation alert screen may appear after the desktop computer restarts.**

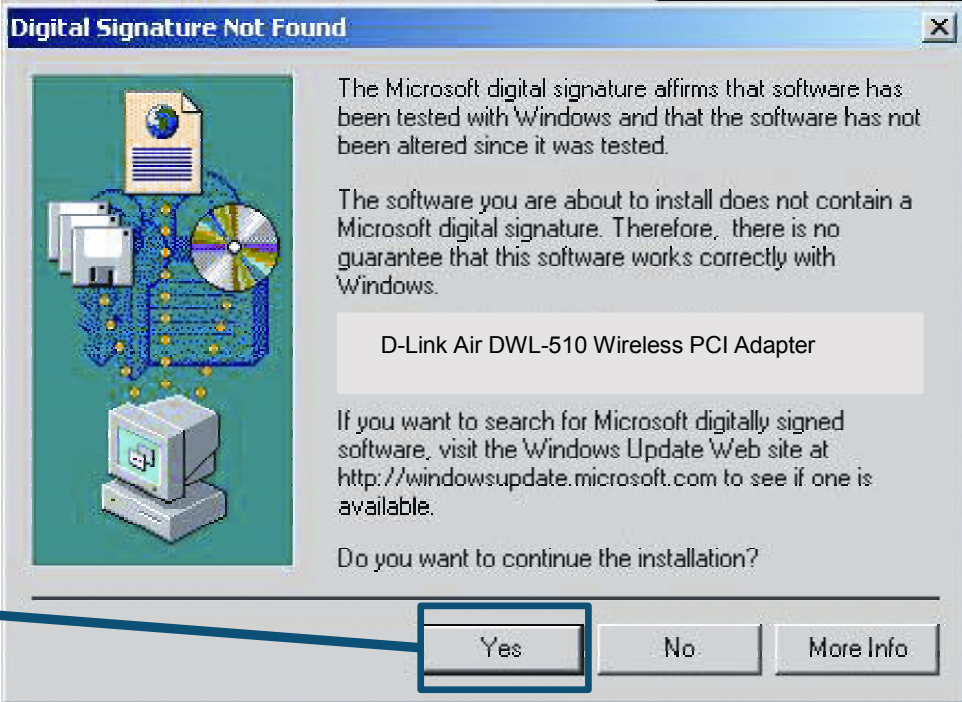
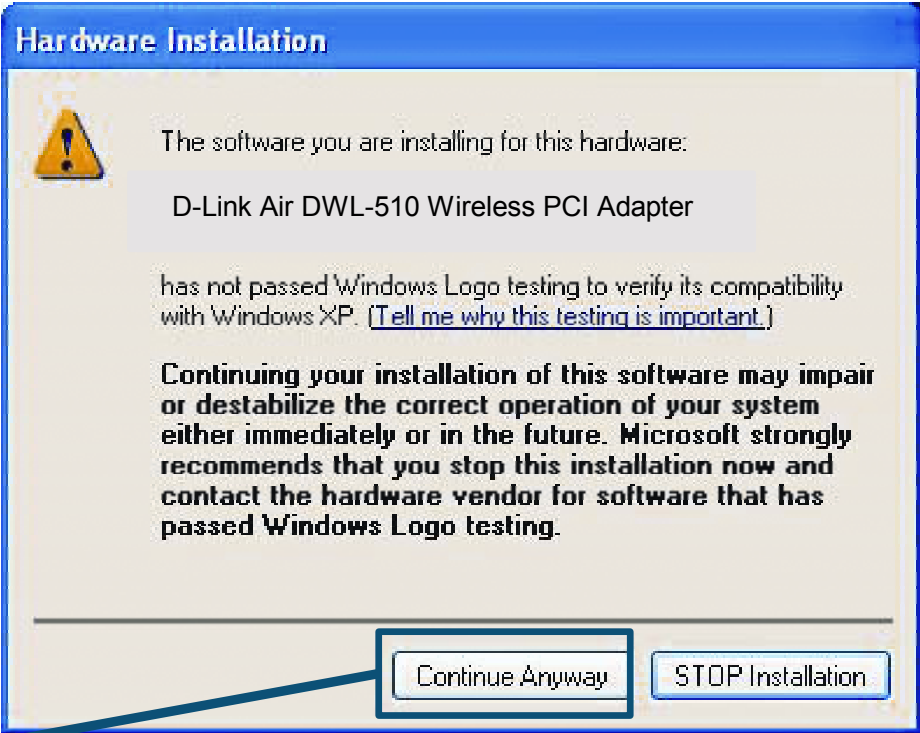
Click Continue **Anyway** to finalize the installation

Click Finish to finalize the installation

 **For Windows 2000: Digital Signature Not Found screen may appear after your computer restarts.**

Click Yes to finalize the installation

 **The D-Link driver software for this device is undergoing Windows Logo testing. Microsoft certification is pending.**



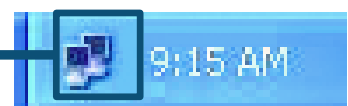
## 4 Your Installation is Complete!

After you've continued in Windows 2000, ME, or 98SE, the D-Link *Air DWL-510 Configuration Utility* will automatically start and the utility icon will appear in the bottom right hand corner of the desktop screen (systray). **If this icon appears GREEN, then you have successfully installed the DWL-510, are connected to a wireless network and are ready to communicate.**

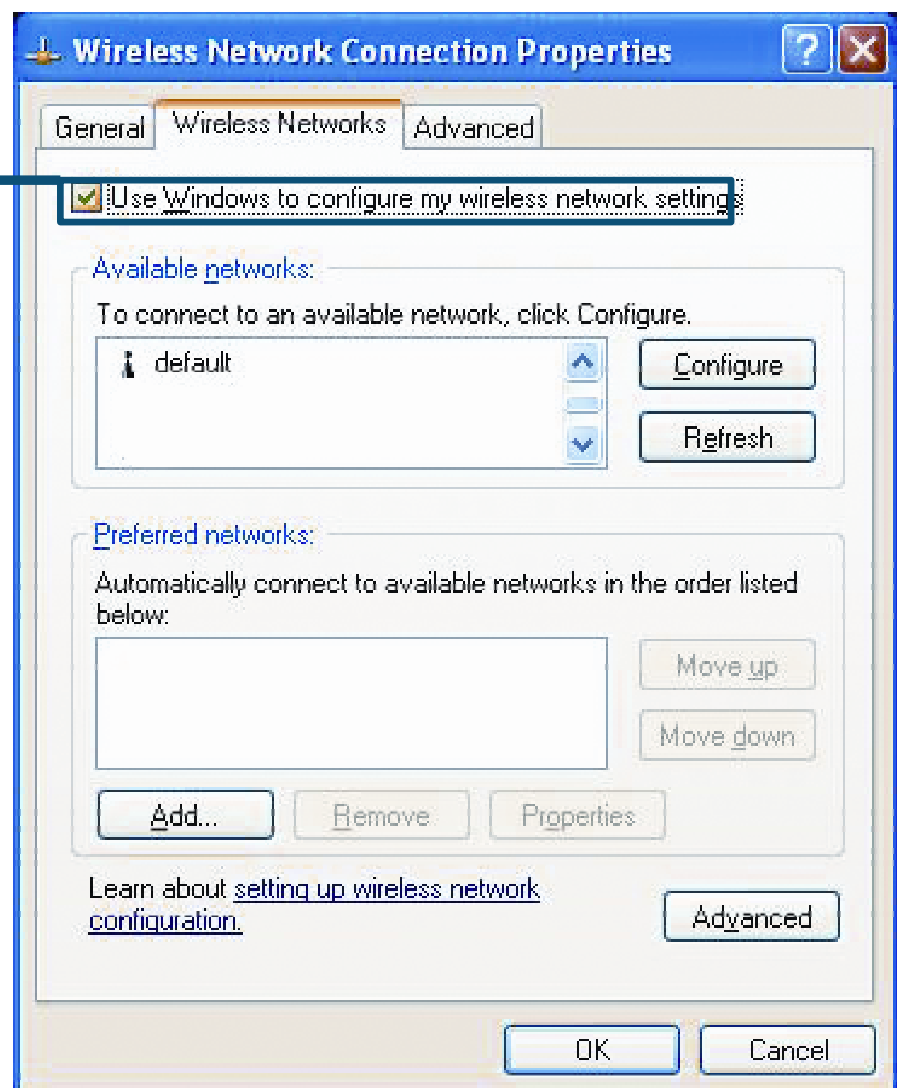
Double-click the utility icon to use the configuration utility



By default in Windows XP you can use the wireless Zero Configuration to change the wireless settings on your DWL-510



If you want to use the utility instead of the Wireless Zero Configuration built in to Windows XP, go to Network Connection Properties and uncheck the following.



# Appendix

## Using the Configuration Utility

### A. Status:

Displays the MAC Address of the Access Point that is associated with the DWL-510.

**B. SSID:** The Service Set Identifier is the name assigned to the wireless network. The factory SSID setting is set to **default**.

**C. Frequency:** Display the frequency of the Access Point that is associated with the DWL-510.

**D. Wireless Mode:** Display wireless mode using infrastructure or Ad-Hoc mode.

### E. Encryption:

Display the encryption with the connected wireless device is enable or disable.

**F. TxRate:** The default setting is **Auto**; meaning, TxRate settings are automatically determined by the DWL-510 depending on the distance from the access point.

The screenshot shows the 'D-Link Air Utility' window with a sidebar on the left containing 'Link Info', 'Configuration', 'Advanced', 'Site Survey', and 'About'. The main area displays the following settings:

- Status: Associated BSSID=00:00:00:01:00:01
- SSID: PM
- Frequency: 802.11b
- Wireless Mode: Infrastructure
- Encryption: Enabled
- Tx Rate: 11.0 Mbps
- Channel: (empty)

There is a 'Rescan' button next to the Channel field. Below the settings, there are two graphical displays:

- Signal Strength:** A red progress bar showing 87% signal strength.
- Packet Count:** A bar chart showing Transmit and Receive statistics. The Transmit bar is at >500 and the Receive bar is at 0.

**G. Channel:** Displays the channel information. By default, the channel is set to 6 and selection is automatically determined by the DWL-510.

**H. Signal Strength:** Displays the Signal Strength represents the wireless signal between the access point and the DWL-510. The percentage coincides with the graphical bar.

**I. Packet Count:** Displays the statistics of data transmitted and received.

# Appendix

**J. SSID:** The Service Set Identifier is the name assigned to the wireless network. The factory SSID setting is set to **default**.

**K. Wireless Mode:** To select the wireless mode using infrastructure or Ad-Hoc mode.

**L. Data Encryption:** Enabling the encryption that connected to the wireless device.

**M. Authentication:** Selecting the Authentication mode to allows the communication with other devices.

The screenshot shows the 'D-Link Air Utility' window with the 'Configuration' tab selected. The settings are as follows:

- SSID:** PM
- Wireless Mode:** Infrastructure
- Data Encryption:** Enabled
- Authentication:** Open
- Key Length:** 64 bits (40+24) - 10 Hexadecimal di

Below the Key Length dropdown, there are four radio buttons labeled 1, 2, 3, and 4, each with a corresponding text input field containing eight asterisks (\*\*\*\*\*).

At the bottom of the window, there are two buttons: 'IP Settings' and 'Apply'.

**N. Key Length:** Select the key length, either 64 or 128 bit using a key in either ASCII code for representing English letters as numbers from 0-127 (e.g., a word) or hexadecimal digits consist of the number 0-9 and the letters A-F. Be noted to select the same key between the DWL-510 with other Wireless devices, click on Key 1 ~ 4 for the selection.

**O. IP Setting:** Click on the IP setting to connect to a network properly.



# IP Address Configuration

To connect to a network, make sure the proper network settings are configured for DWL-510.

## Dynamic IP address setup

Used when a DHCP server is available on the local network. (i.e. Router)

Select Obtain an IP address automatically (if the Wireless Router or Access Point has DHCP server enabled)

Select Obtain DNS server address automatically

Click OK

Obtain an IP Address Automatically

Assign the following IP Address

IP Address

Subnet Mask

Default Gateway

Obtain DNS Server Address Automatically

Use the following DNS Server address

Preferred DNS Server

Alternate DNS Server

OK Cancel

## Static IP address setup

Used when a DHCP server is not available on the local network.

Select Use the following IP address

IP address: 172.16.3.200  
Subnet mask: 255.255.0.0

Input a static IP address in the same range as the Wireless Router or Access Point.

Click OK

Obtain an IP Address Automatically

Assign the following IP Address

IP Address 172 . 16 . 3 . 200

Subnet Mask 255 . 255 . 0 . 0

Default Gateway 172 . 16 . 0 . 1

Obtain DNS Server Address Automatically

Use the following DNS Server address

Preferred DNS Server 192 . 168 . 0 . 1

Alternate DNS Server

OK Cancel

## Technical Support

You can find the most recent software and user documentation on the **D-Link** website.

**D-Link** provides free technical support for customers within the duration of the warranty period on this product.

Customers can contact **D-Link** technical support through our web site.

**D-Link Technical Support over the Internet:**  
<http://support.dlinktw.com.tw>

**D-Link**<sup>®</sup>  
Building Networks for People