

Wi-Fi and the cloud help to transform teaching and education



Saint Joseph-La Salle is part of the Lasallian network, the world's leading teaching network with 1,500 institutions in 79 countries and 1.3 million students. Situated in Lorient, the Saint Joseph-La Salle school complex consists of a secondary school, a general and technical sixth form college, a vocational college, a centre of higher education, and a centre for continuing education and learning, all located on the same 10-hectare site. Its dozens of teaching courses offer some 2,000 students a wide range of educational options.



SUMMARY

Client	School complex Saint Joseph-La Salle
Sector	Private education
Location	Lorient (56)
Challenge	Wi-Fi network infrastructure:
Solution	Wi-Fi access points Nuclias Cloud administration
Results	Easy deployment and scalability. Wireless network performance. User-friendly administration solution.

Digital education is one of the top priorities at the moment. To address this, Saint Joseph-La Salle has set up different courses for students of all levels: the digital citizenship educational course at the secondary school, the 3-year digital course at the sixth form college specialising in SNT (digital sciences and technology) and NSI (digital technology and computer sciences), the Virtual Reality Club, the digitisation of service industry professions at the vocational school, etc.

Challenge

The Saint-Joseph La Salle Group already had a Wi-Fi solution, but it no longer met the challenges of transforming education, which increasingly relies on digital tools and has to deal with larger connections due to the increasing number of terminals.

In 2021, Saint Joseph-La Salle's management decided to transform the wireless network infrastructure, taking into account current usage, yet also ensuring the capacity to adapt to future needs and providing new guarantees in terms of security and performance.

"We were already equipped with D-Link Wi-Fi solutions, a choice made partly on the basis of the positive feedback we had from other schools and were satisfied with. However, the

infrastructure had to evolve to meet our new needs," says Pierre Daian, Head of IT at Saint Joseph-La Salle. "In this new project, D-Link's proximity and ease of access has enabled us to build the new architecture according to our specifications"

The school group's new architecture is based on D-Link's Nuclias Cloud solution, specifically designed for facilities that want to move away from the technical side of the network to focus on their business. Nuclias enables efficient installation, configuration, monitoring, troubleshooting and management of wired and wireless networks. Wi-Fi coverage and networking capability are provided by high-performance access points and switches that can be rapidly deployed on-site. In terms of configuration and management, all administration can be done via the intuitive and user-friendly web interface accessible from a PC, laptop or smartphone.

Solution

Deployed and operational since September 2020, the current Wi-Fi network has 50 Wi-Fi access points. It offers greater and more effective security by separating and managing access for staff, students and guests to the network. Further benefits include role and privilege-based access control and WPA3 next-generation encryption.

"D-Link's Nuclias Cloud solution has enabled us to realise this deployment efficiently. In addition, D-Link's technical support has changed the authentication of wireless clients to provide better control and security," says Pierre Daian.

Results

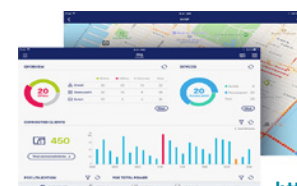
30 new Wi-Fi access points will be installed over the coming year, with the Nuclias Cloud architecture ensuring unlimited scalability. Commissioning can be performed very rapidly simply by attaching the new Nuclias terminals to the current profile, which certainly saves time for the IT management of a school complex of over 2,000 users.

Products & services



Network infrastructure:

- 50 access points DBA-1210P
- Nuclias Cloud administration



<https://eu.dlink.com/uk/en>