



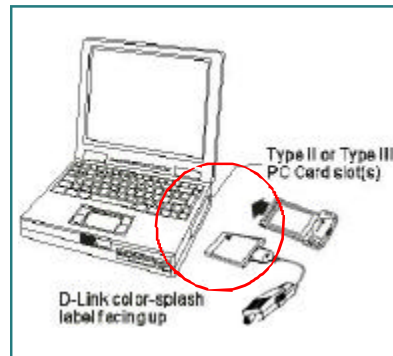
Quick Install Guide for Windows ME DFE-680TX/TXD 10/100 Ethernet PC Card

Please note that you will need Cat5, RJ-45 cable to complete your network installation. Please see Appendix B for more information regarding cables.

1 Inserting the DFE-680TX/TXD 10/100 Ethernet PC Card into your laptop.

With the laptop turned **ON**, insert the DFE-680TX/TXD 10/100 Ethernet PC Card into your laptop.

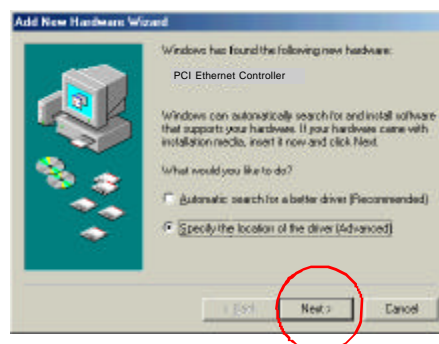
Gently insert the front end (with the yellow arrow on the card pointing toward the computer) of the PC Card all the way into the PCMCIA slot on your laptop, until it is firmly seated.



2 Running the Add New Hardware Wizard

Windows will automatically detect new hardware and begin searching for drivers. Insert the CD that is included with your purchase of the DFE-680TX/TXD. Select Specify the location of the driver.

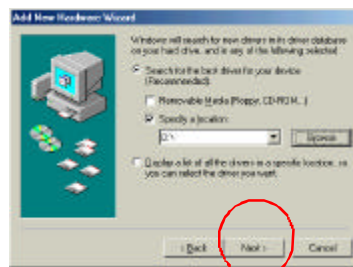
Click Next.



2 Running the Add New Hardware Wizard *continued*

At the next screen, select Search for the best driver for your device. Select Specify a location: Type the drive letter for the CD-ROM into the box or choose Browse to highlight the CD-ROM drive under Drivers.

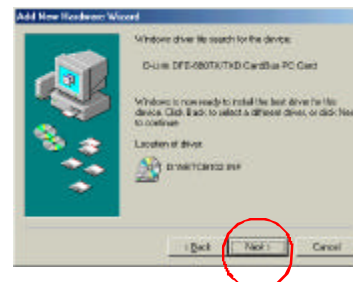
Click Next to continue the installation.



The Wizard has located the driver on the CD-ROM drive.

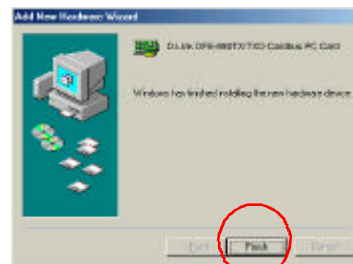
Click Next.

Windows will copy the files to the hard drive.



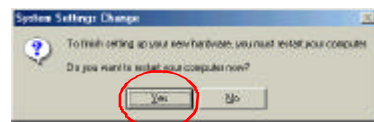
Windows has finished installing the DFE-680TX/TXD.

Click Finish, to complete installation.



At this window please select

Yes to restart the computer.

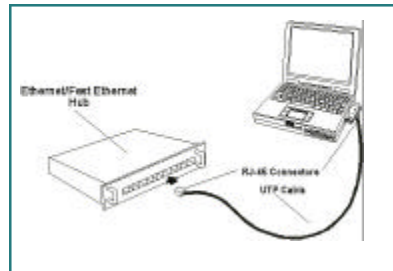


3

Connecting to your network

After the Hardware Wizard has completed the installation of the DFE-680TX/TXD, you can now make your network connection.

Please insert one end of the RJ-45 plug into the opening in the DFE-680TX/TXD Ethernet PC Card, and then insert the other end of the RJ-45 cable into your networking hub or switch.



You are now networked!

*Please see **Appendix A** to check for proper installation of your DFE-680TX/TXD using the Device Manager. Please see **Appendix B** for more information on types and lengths of cable that can be used to connect your network.*

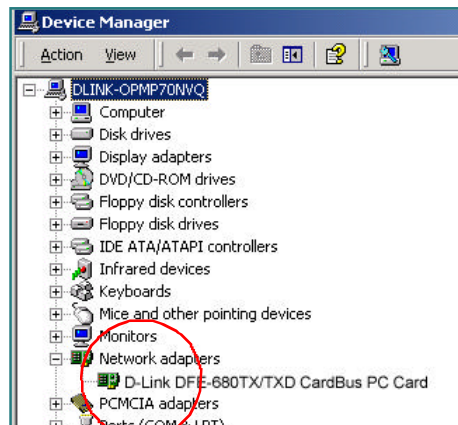
*Note: For more information on alternate networking possibilities, please see the **Networking Basics** and the **Getting Started** sections of the User's Manual.*

For instructions on configuration, please see your User's Manual.

APPENDIX

A

To check for the proper installation of your DFE-680TX/TXD, please click on **START > SETTINGS > CONTROL PANEL**, double click on the **SYSTEM** icon. At the **SYSTEM PROPERTIES** window, click on the **DEVICE MANAGER** tab. Your **DFE-680TX/TXD** will appear under **NETWORK ADAPTERS**, as shown.



APPENDIX

B

Connecting Your Network Cable

Category 5 UTP cable can be used for both **Fast Ethernet** cabling and for **traditional Ethernet** cabling.

Connecting for Fast Ethernet cabling

Cat5 cable is required for Fast Ethernet operation. The maximum cable length between the DFE-680TX/TXD and the supporting hub is 300 ft. The cable must be straight (not a crossover cable), with an RJ-45 plug at each end.

Connecting for traditional (10Mbps) Ethernet cabling

Category 3, Category 4, and Category 5 UTP cable, as well as EIA/TIA-568 100-ohm STP cable, all qualify under traditional Ethernet cabling rules. The maximum cable run between the DFE-680TX/TXD and the supporting hub is 300 ft. The cable must be straight (not a crossover cable) with an RJ-45 plug at each end.

