

DI-206/308 Remote Access Configuration Guide

Model: DI-206/308 ISDN Routers

Firmware Version DI-206 v1.85, DI-308 v1.00

OS Supported: Windows 95, Windows 98, Windows 98SE, Windows Me, Windows NT 4.0 and Windows 2000.

Introduction

To setup a Remote Access configuration, first ensure you have Routeman configurator software installed on your PC. The current version of Routeman as at 4th July 2001 is version 1.20.11.

Routeman Configuration

When you run Routeman it will discover DI-208 router connected to your local area network.



Fig 1. Routeman Discovers DI-206

If the IP address is not set, you can at this stage set an appropriate IP address for the router. Enter the IP address and the mask then click on the pencil tab to save.

Double click the DI-206 from the list you like to configure, enter 'Admin' as the default password.



Fig 2. Main Configuration Screen

Click on the wizard tab to start the wizard configuration.

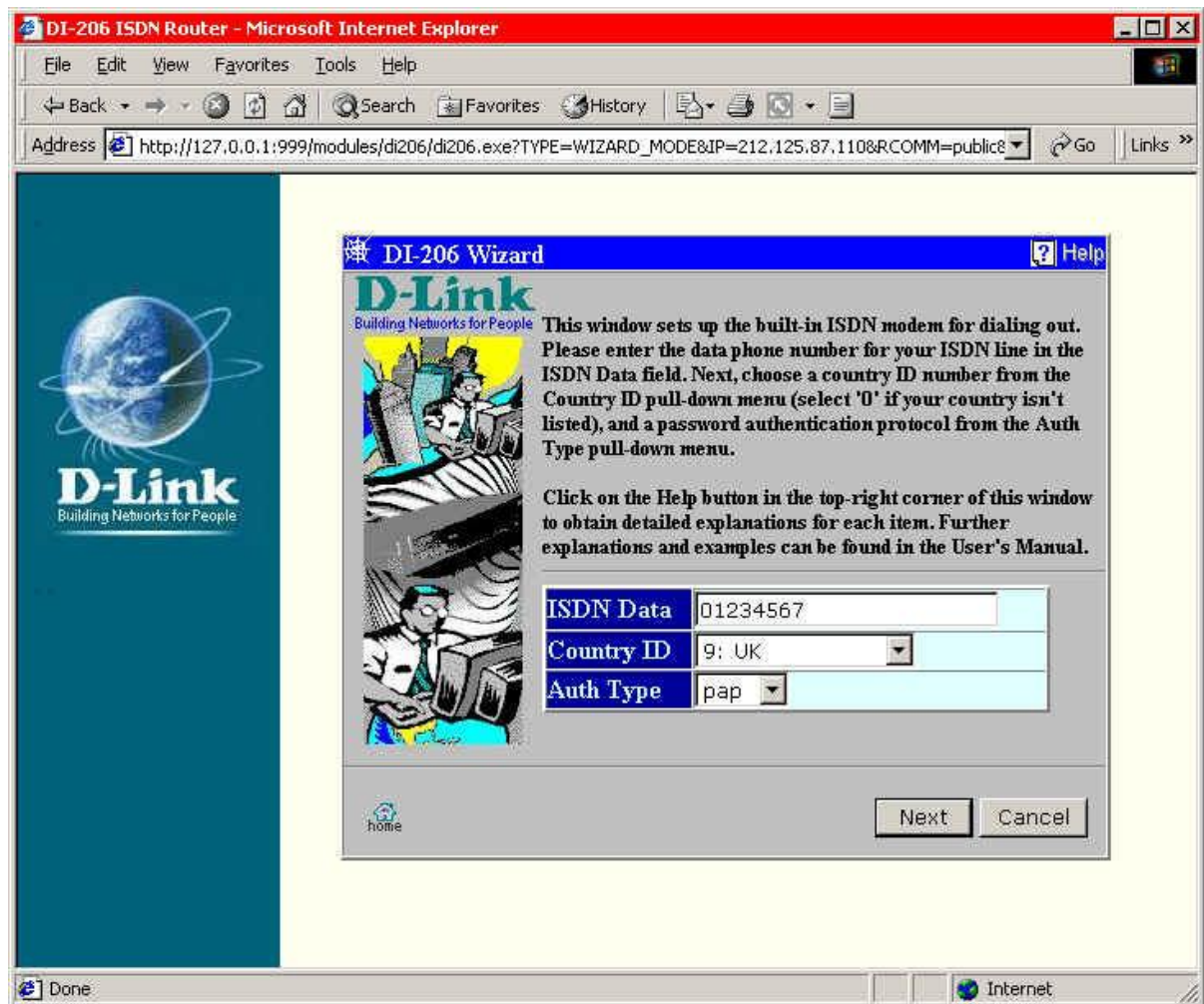


Fig 3. Router Wizard Configuration

ISDN Data - this is the local ISDN number. The ISDN number the router is connected too.

Country ID - Select appropriate country id.

Auth Type - Select PAP. Router will auto negotiate, however select PAP for default.

Select Next to continue with wizard configuration

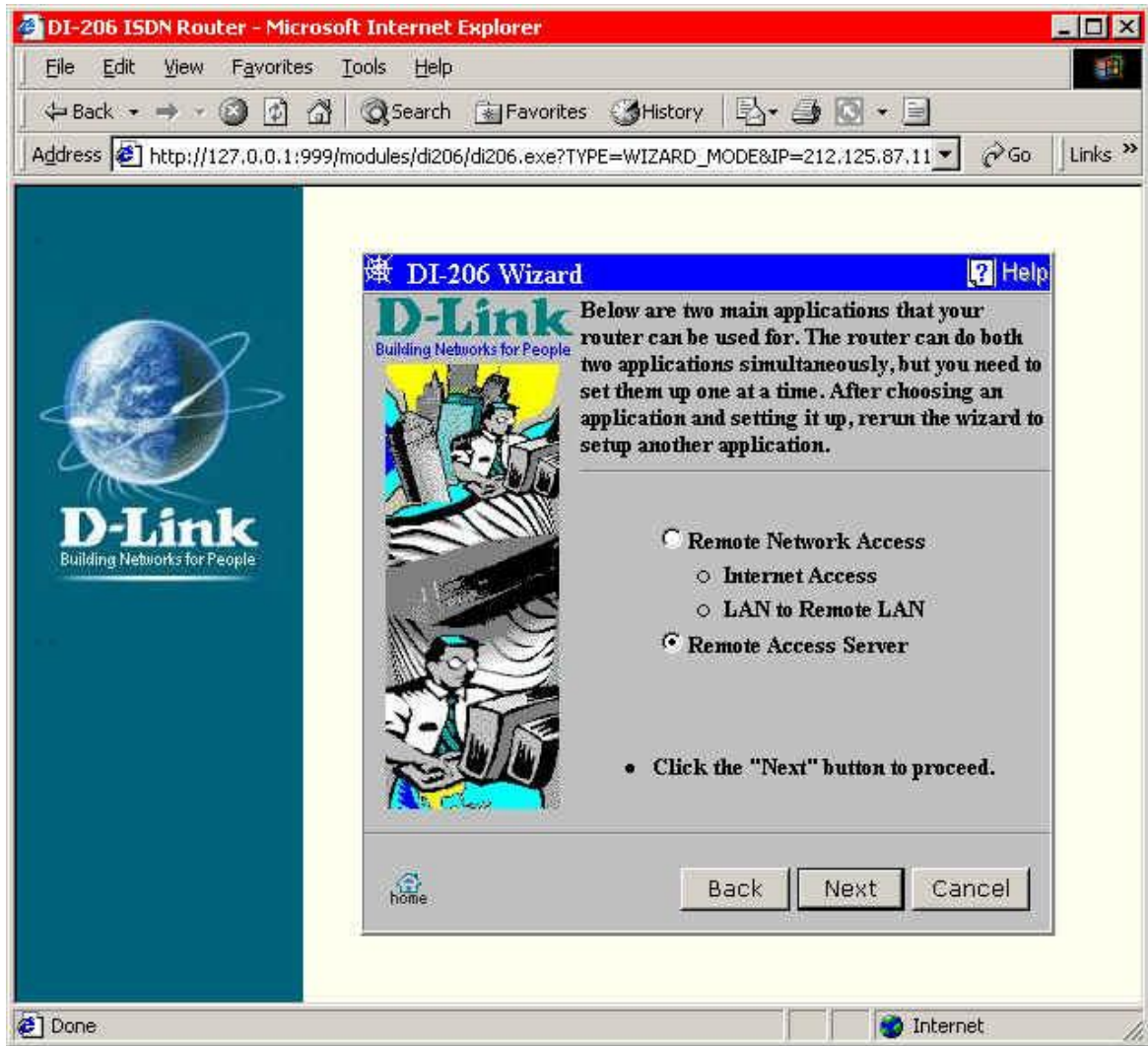


Fig 5. Remote Access Server

Select 'Remote Access Server' then next.

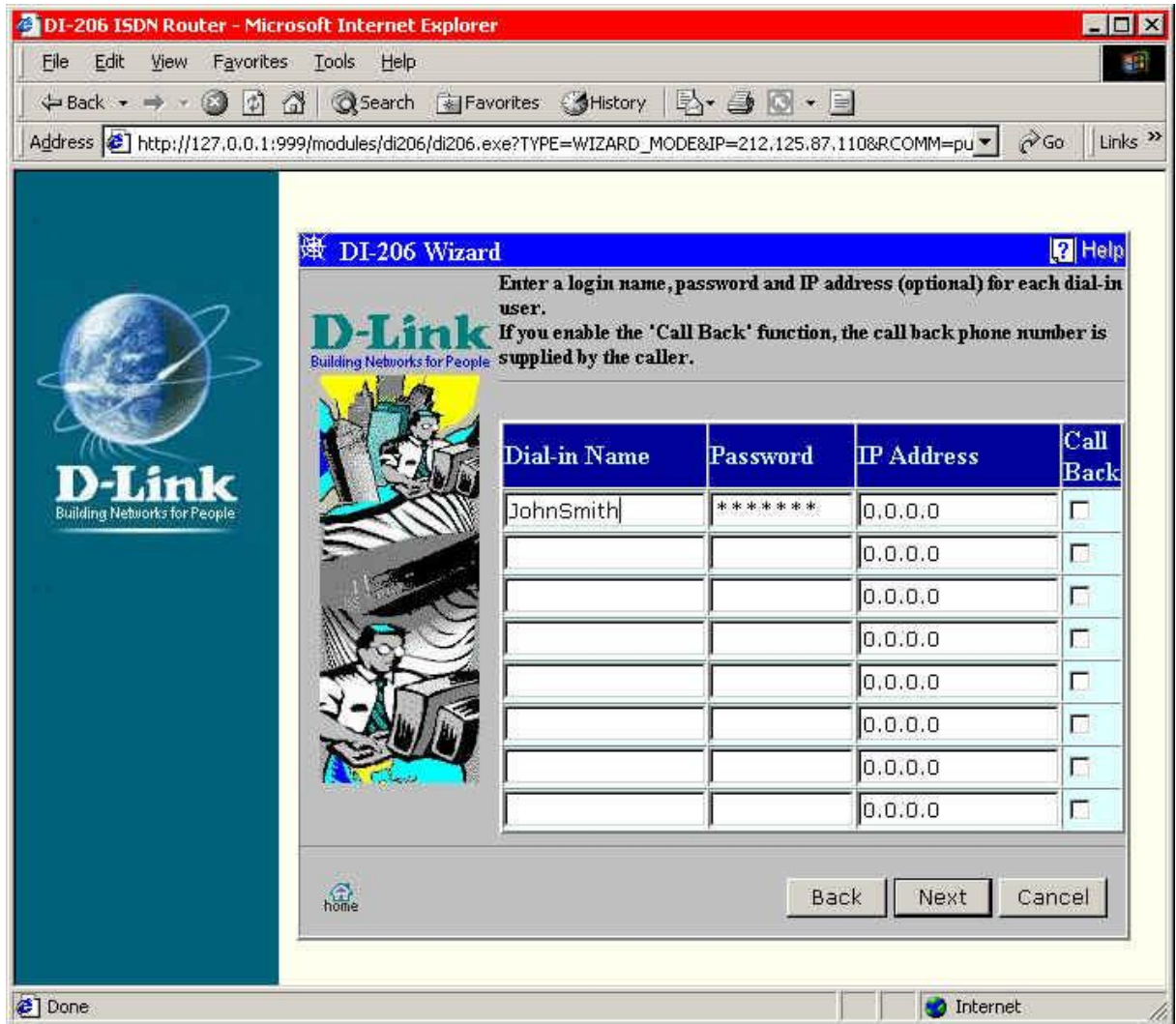


Fig 6. Username & Password for Dial in User.

Type is a username and password for your dial in user. If you want the router to assign an IP address automatically to the dial in user then leave the IP address setting as 0.0.0.0, this is normally the case. If you intend for this caller to be called back then check the call back box.

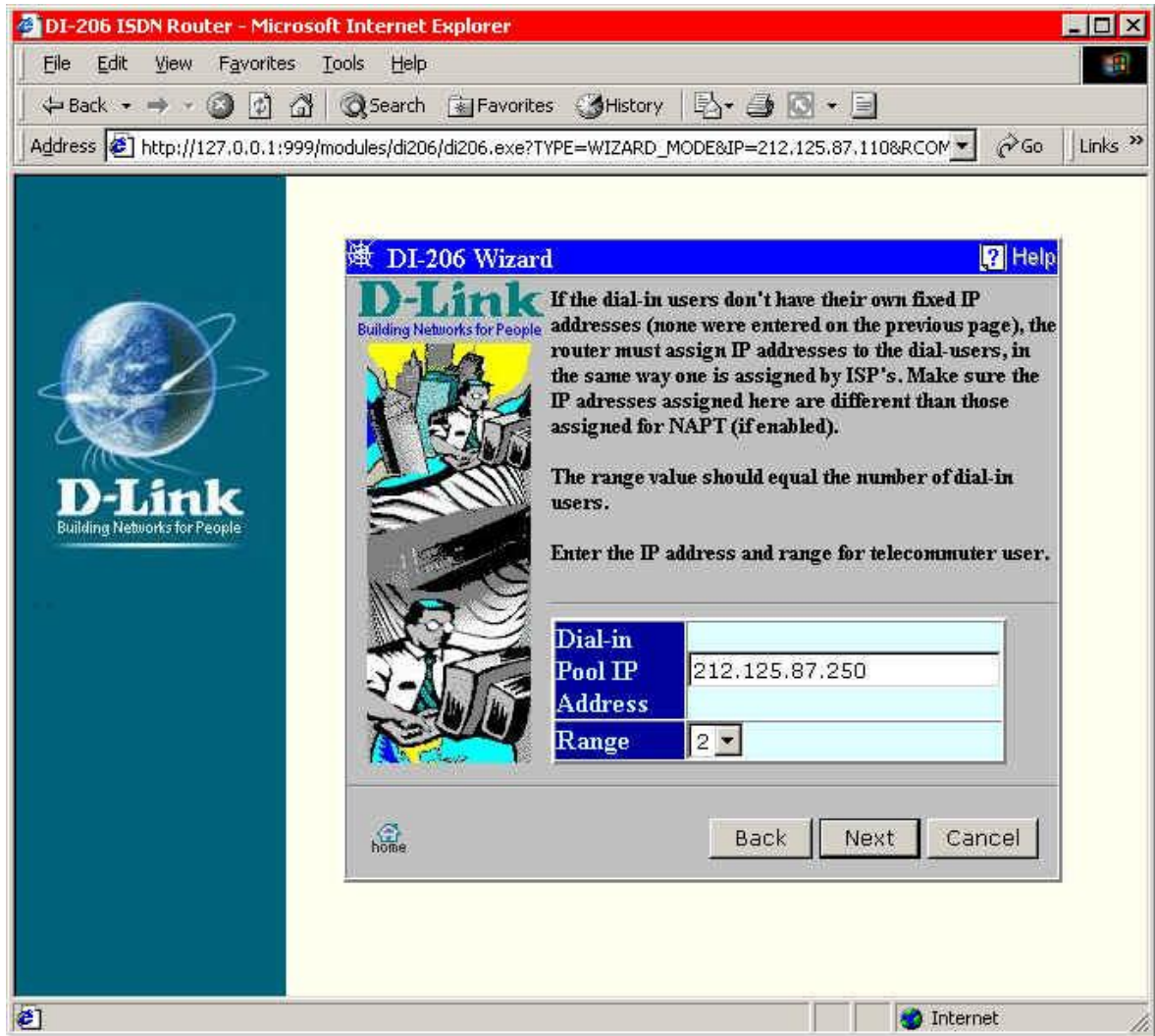


Fig 7. IP address Assign for Dial in User

The Dial in pool address is the start of the address range for assigning to dial in users. The range can either be set to 1 or 2, one dial in user or maximum of two at any one time.

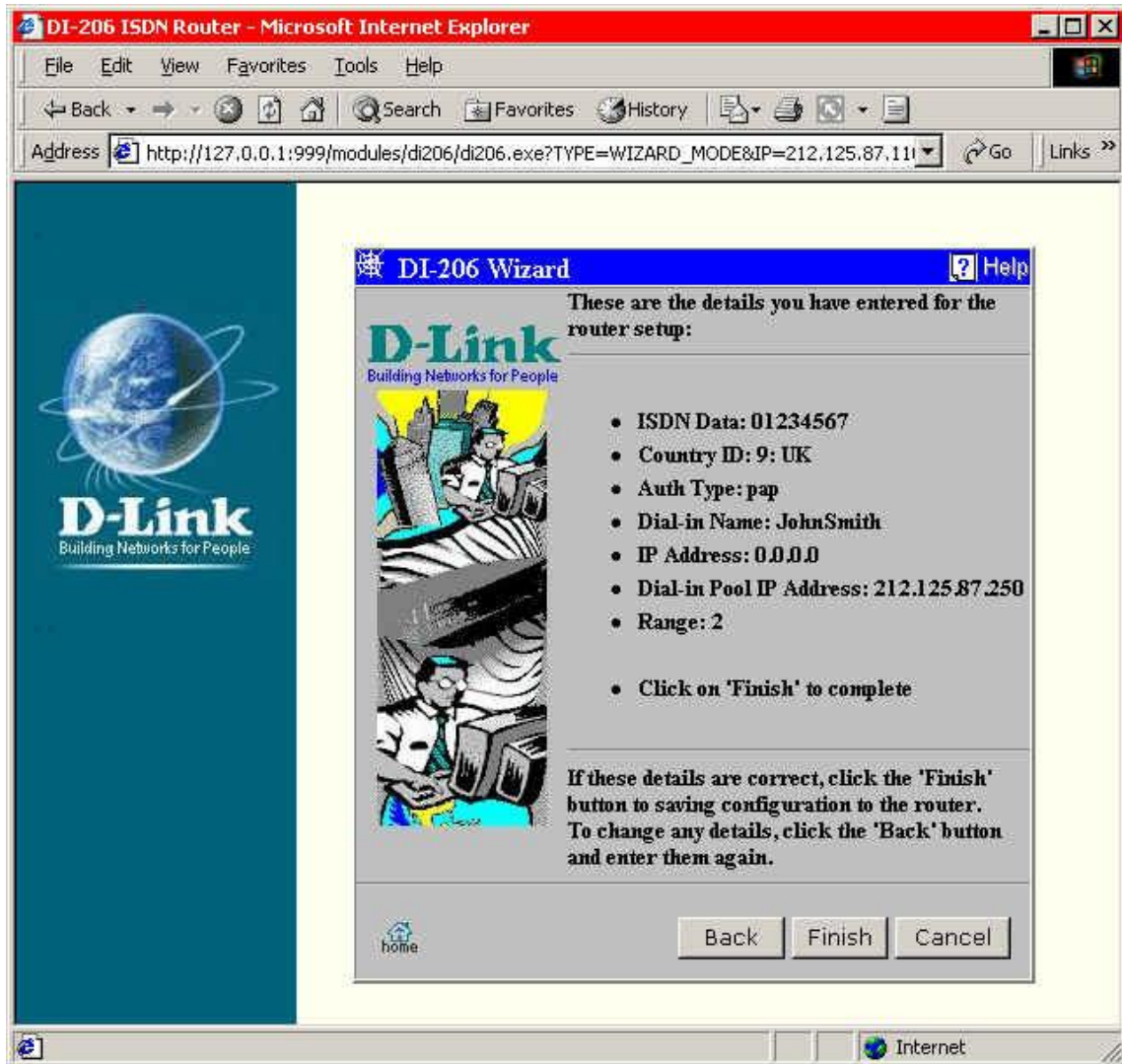


Fig 8. Confirm Remote Access Settings

Confirm the router configuration for remote access and click finish to save settings. Your dial in user is ready to dial in, get authenticated and connect to the local area network.

~ End of Document ~