

Product Highlights

Robust Design

High EMC endurance, fanless design, and a wide operating temperature range combined with IP40 housing to withstand harsh operating environments.

Industrial Deployment

Compact, plug-and-play form factor design that supports DIN rail mounting to allow for flexible and swift deployment.

Flexible Availability

4 Gigabit Ethernet PoE ports for various network deployments, in addition to 2 SFP uplink ports for long distance connections.



DIS-100G-06P

Gigabit Industrial Unmanaged PoE Switch

Key Features

Adaptable Application

- SFP ports for long distance connections
- Plug-and-play installation

Robust and High-Redundancy Design

- Fanless, passive cooling design
- Industrial grade operating temperature (-40~75°C)
- High EMS endurance
- Durable IP40-rated housing
- Dual power input for redundant power supplies
- Built-in 6 KV surge protection on copper ports

Advanced Features

- 9K jumbo frames
- IEEE 802.3az Energy Efficient Ethernet
- Power saving by link status

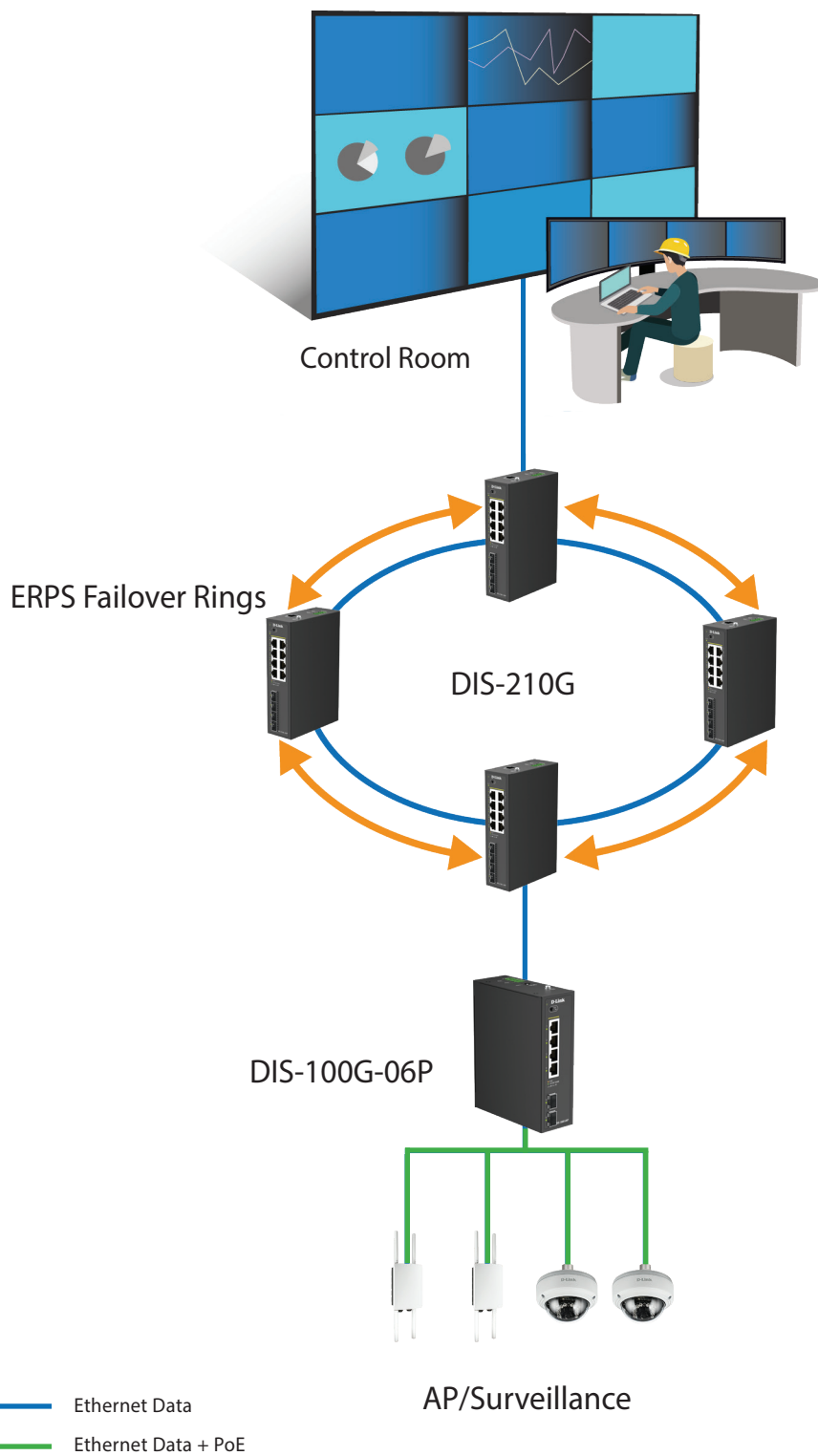
The DIS-100G-06P Gigabit Industrial Unmanaged PoE Switch features a robust design, making it ideal for deployment in industrial and outdoor cabinet surveillance settings and capable of withstanding the harshest environments. In addition, the DIS-100G-06P is plug-and-play, allowing for effortless and swift deployment.

Durable, Reliable, and Efficient

The DIS-100G-06P switch is housed in a highly resistant IP40-rated metal casing to protect the switch from harsh environmental conditions. High electromagnetic susceptibility (EMS) protects the DIS-100G-06P from undesirable effects when operating in environments with strong electromagnetic interference. Meanwhile, the fanless design extends the life of the DIS-100G-06P while also enabling it to operate in a wide temperature range from -40 °C up to 75 °C. With DIN rail mounting capability, the DIS-100G-06P can fit seamlessly into your industrial equipment infrastructure. In addition, the DIS-100G-06P supports dual power input, which allows for a redundant power supply configuration to make sure the switch continues to operate in the event of a primary power supply failure.

Green Ethernet Technology

The DIS-100G-06P features green technology; IEEE 802.3az Energy-Efficient Ethernet (EEE). Energy-Efficient Ethernet reduces the power consumption of the switch when network utilization is low, effectively lowering the cost of ownership during periods of inactivity.



Technical Specifications

Model Number	DIS-100G-06P
Hardware Version	A1
Interfaces	<ul style="list-style-type: none">• 4 x GE PoE ports• 2 x 1G SFP ports
Port Functions	<ul style="list-style-type: none">• IEEE 802.3 for Ethernet• IEEE 802.3u for Fast Ethernet• IEEE 802.3z for Gigabit fiber• IEEE 802.3az Energy-Efficient Ethernet (EEE)
Media Interface Exchange	Auto MDI/MDIX adjustment for all twisted-pair ports
Performance	
Switching Capacity	12 Gbps
Transmission Method	Store-and-forward
MAC Address Table	8K
Maximum 64 Byte Packet Forwarding Rate	8.92 Mpps
Packet Buffer Memory	4.1 MB
Flash Memory	16 MB
DRAM Size	128 MB
PoE	
PoE Standards	IEEE 802.3af/at
PoE Capable Ports	4
PoE Power Budget	<ul style="list-style-type: none">• 120 W• 30 W per port
LEDs	
Power (per device)	√
Link/Active/Speed (per RJ-45 port)	√
Link/Active/Speed (per SFP port)	√
Physical	
Power Input	48 to 55 VDC terminal block dual input
Maximum Power Consumption	Maximum: 123.2 W (w/ PoE) 6.3 W (w/o PoE)
Standby Power Consumption	Maximum: 2.49 W
Heat Dissipation	420.5 BTU/hr
MTBF	> 200,000 hours
Operating Temperature	-40 to 75°C (-40 to 167°F)
Storage Temperature	-40 to 85°C (-40 to 185°C)
Operating Humidity	5% to 95% relative humidity

Storage Humidity	5% to 95% relative humidity
Material	IP40-rated metal casing
Installation	DIN rail
Dimensions (L x W x H)	138 x 108 x 44 mm (5.43 x 4.25 x 1.73 in)
Weight	0.63 kg (1.39 lbs)
Certifications	
Safety	cUL, CB, CE, BSMI
EMI	CE Class A, VCCI Class A, FCC Class A, IC, BSMI, RCM
Order Information	
DIS-100G-06P	4 Ports GE PoE + 2 Ports 1G SFP Industrial Unmanaged Switch, 120W, DIN
Optional SFP Transceivers	
DIS-S301SX	1000BASE-SX, multi-mode, 550 m, -40 to 85 °C operating temperature
DIS-S302SX	1000BASE-SX, multi-mode, 2 km, -40 to 85 °C operating temperature
DIS-S310LX	1000BASE-LX, single-mode, 10 km, -40 to 85 °C operating temperature
DIS-S330EX	1000BASE-EX, single-mode, 30 km, -40 to 85 °C operating temperature
DIS-S350LHX	1000BASE-LHX, single-mode, 50 km, -40 to 85 °C operating temperature
DIS-S380ZX	1000BASE-ZX, single-mode, 80 km, -40 to 85 °C operating temperature