

How do I configure the PPTP Server on my DI-804HV or DI-824VUP+ so I can VPN using Network and Dial-up Connections on a WinXP or Win2k machine?

Step 1 Login to the router. Open your web browser and type in the IP address of the router (192.168.0.1). Enter the username (admin) and password (blank by default), and then click **OK**.

Step 2 Click on **VPN** and then click **PPTP Server Setting**.

The screenshot shows the web interface of a D-Link DI-804HV Ethernet Broadband Router. The 'VPN' button is highlighted in yellow. The 'VPN' checkbox is checked. The 'Max. number of tunnels' is set to 0. The 'Method' column shows 'IKE' for all tunnels.

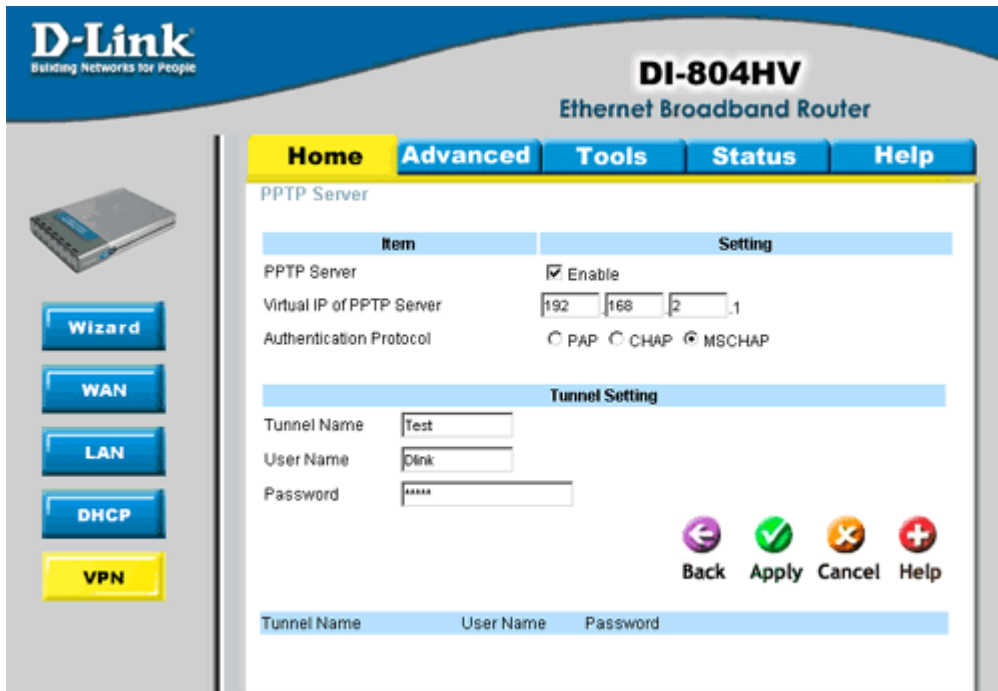
Item	Setting
VPN	<input checked="" type="checkbox"/> Enable
NetBIOS broadcast	<input type="checkbox"/> Enable
Max. number of tunnels	0

ID	Tunnel Name	Method
1	<input type="text"/>	IKE <input type="button" value="More"/>
2	<input type="text"/>	IKE <input type="button" value="More"/>
3	<input type="text"/>	IKE <input type="button" value="More"/>
4	<input type="text"/>	IKE <input type="button" value="More"/>
5	<input type="text"/>	IKE <input type="button" value="More"/>

Previous page Next page

Dynamic VPN Settings.. L2TP Server Setting.. PPTP Server Setting..

Step 3 Check the box to **Enable** PPTP server. Insert the Virtual IP of the PPTP Server (IE 192.168.2.1). This must be different from the LAN IP Address. Select the **Authentication Protocol** by selecting the appropriate radio button. Name your tunnel and insert a **User Name** and **Password** for your PPTP client.



Step 4 Click the **Apply** button to save your changes.

How to configure the windows client

Note: This is not supported by D-link

Use the Create a new connection wizard, following pictures will illustrate the right options:

New Connection Wizard

Network Connection Type

What do you want to do?



- C**onnect to the Internet
Connect to the Internet so you can browse the Web and read email.
- C**onnect to the network at my workplace
Connect to a business network (using dial-up or VPN) so you can work from home, a field office, or another location.
- S**et up a home or small office network
Connect to an existing home or small office network or set up a new one.
- S**et up an advanced connection
Connect directly to another computer using your serial, parallel, or infrared port, or set up this computer so that other computers can connect to it.

< Back

Next >

Cancel

New Connection Wizard

Network Connection

How do you want to connect to the network at your workplace?



Create the following connection:

- D**ial-up connection
Connect using a modem and a regular phone line or an Integrated Services Digital Network (ISDN) phone line.
- V**irtual Private Network connection
Connect to the network using a virtual private network (VPN) connection over the Internet.

< Back

Next >

Cancel

New Connection Wizard

Connection Name

Specify a name for this connection to your workplace.



Type a name for this connection in the following box.

Company Name

For example, you could type the name of your workplace or the name of a server you will connect to.

< Back

Next >

Cancel

New Connection Wizard

Public Network

Windows can make sure the public network is connected first.



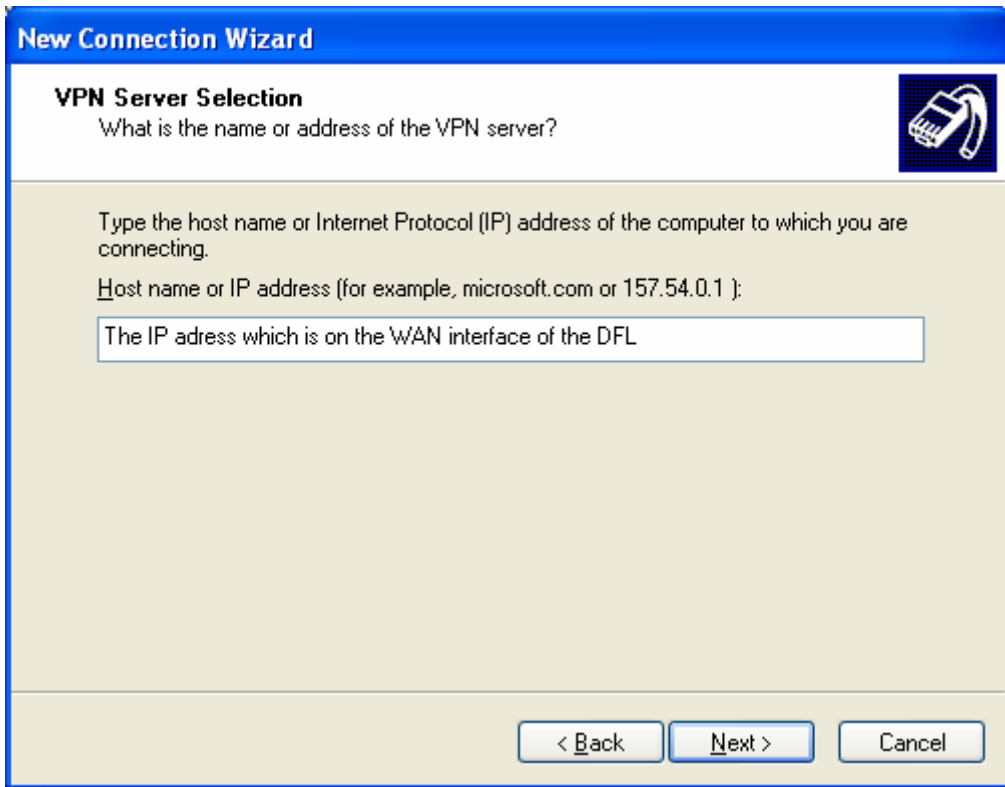
Windows can automatically dial the initial connection to the Internet or other public network, before establishing the virtual connection.

- Do not dial the initial connection.
- Automatically dial this initial connection:

< Back

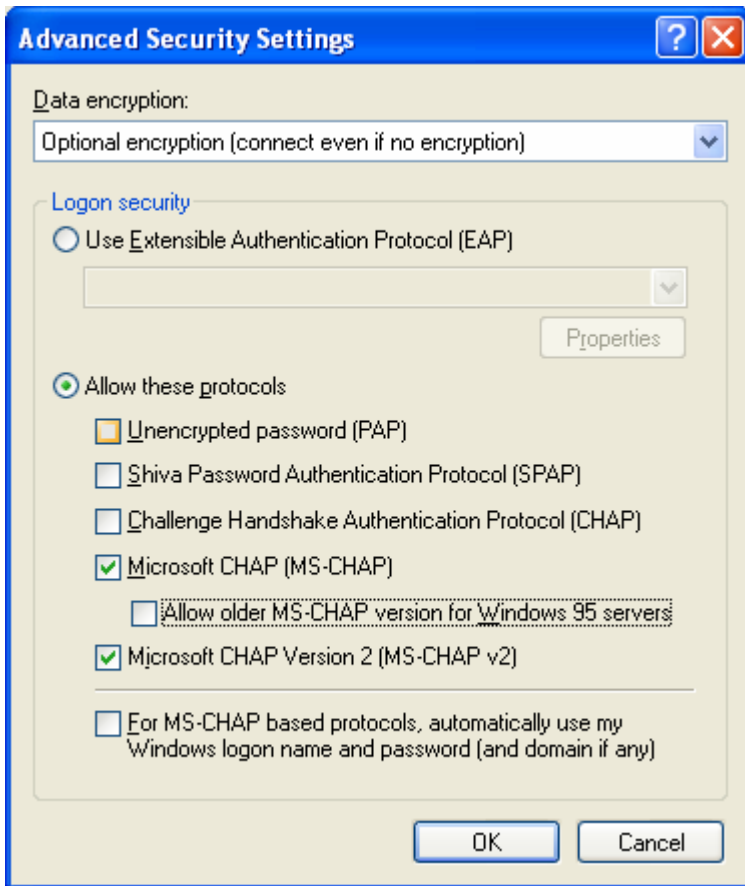
Next >

Cancel



Now that the connection is created you need to right click on the connection and choose properties.

Once there you choose the security tab and set it on advanced and click on settings where the following window should appear and the settings shown in the pictures should be applied:



Once you have clicked ok you choose the tab Networking and double click on Internet Protocol(TCP/IP).

In that window you choose advanced, uncheck use default gateway... and click ok

Now you are good to go but do remember if you are behind a firewall with the client machine it needs to allow VPN traffic.