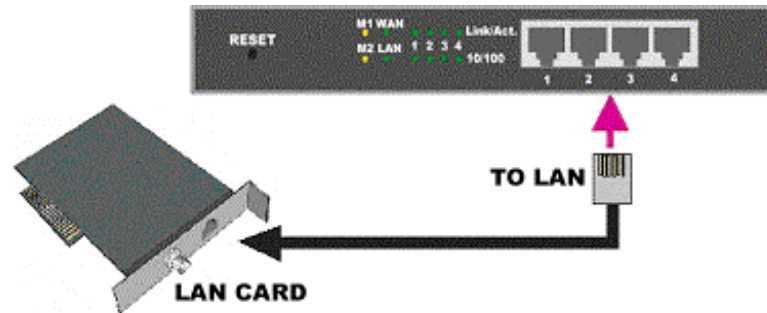


D-Link

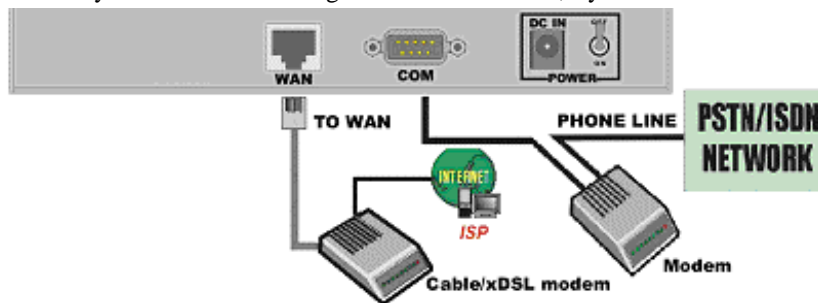
DI-704 Quick Installation Guide

1. Hardware Installation

- A. **Setup LAN connection:** connect an Ethernet cable (straight-through) from your computer's Ethernet port to one of the LAN ports of the DI-704.



- B. **Setup WAN connection:** connect the network cable from your cable or DSL modem to the WAN port of the DI-704. Use the cable that came with your Cable or DSL modem. If you don't see a link light on the WAN LED, try the other network cable.



- C. **Power on:** connect the power cord to power inlet and turn the power switch on. The DI-704 will automatically enter the self-test phase. When in the self-test phase, the indicators M1 and M2 will be lit for about 5 seconds, and then M1 and M2 will flash three times to indicate that the self-test operation has finished. Finally, the M1 will flash continuously once per second to indicate that the DI-704 is in normal operation.

***If you are using PPPoE, begin Step 5.**

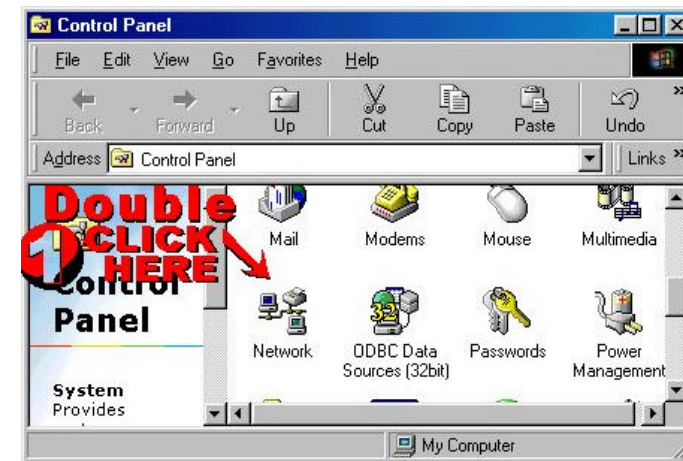
If you are not using PPPoE, proceed to Step 2 below.

2. Find and Write Down Your Computer's Internet Settings

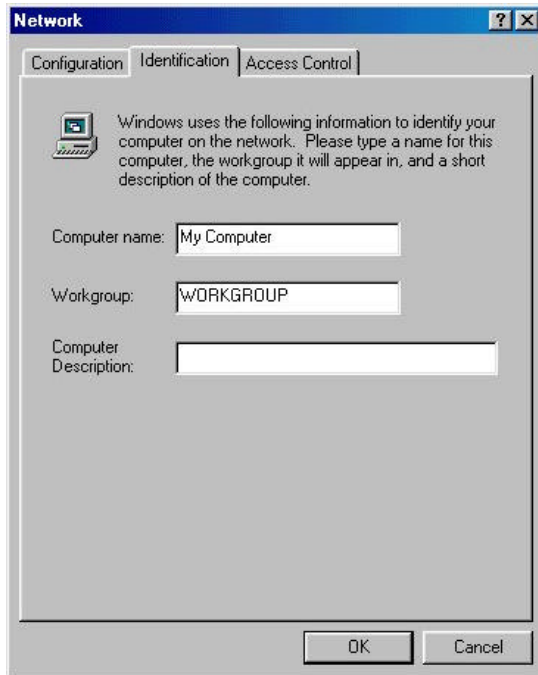
- A. Open the Control Panel



- B. Find and Double Click the Network Icon

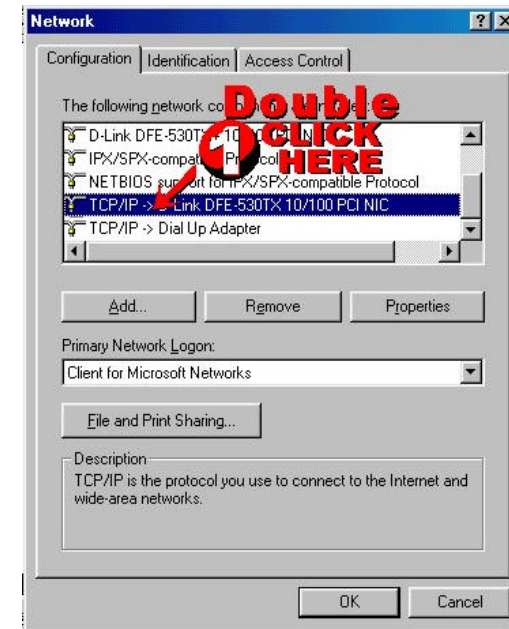


C. Click the Identification Tab

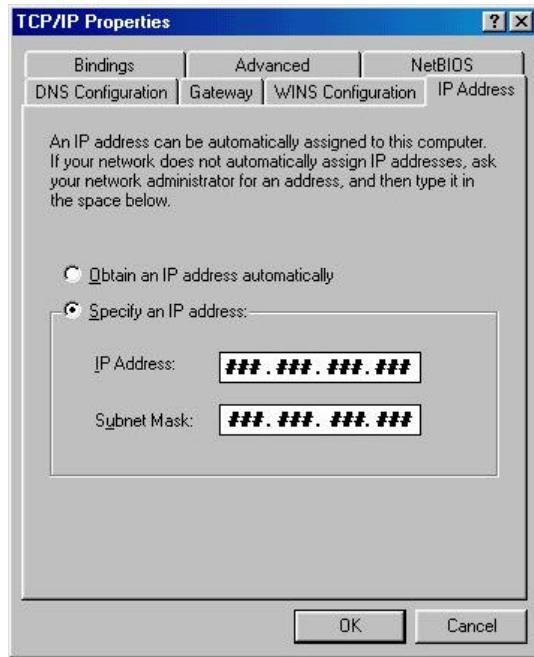


D. Write down your computer name on a sheet of paper.

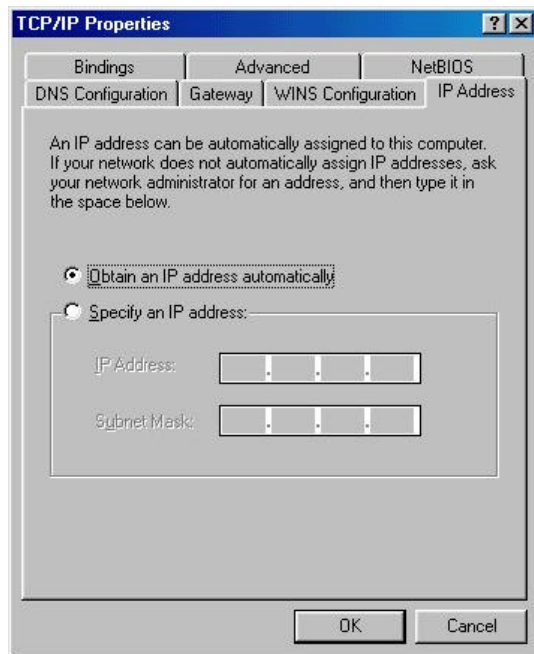
E. Click the Configuration Tab. It should list your network (Ethernet) adapter and the loaded network protocols and services. Find TCP/IP for the network adapter connected to your Cable/DSL modem.



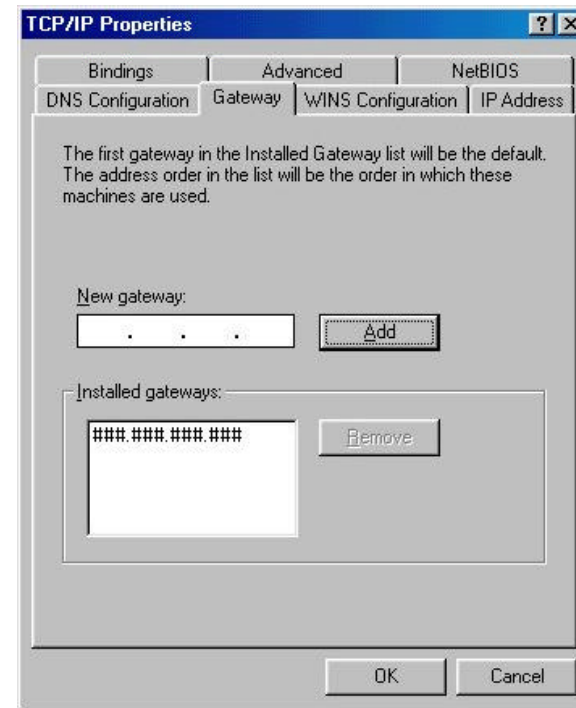
F. Find and double click the TCP/IP setting for your Network Adapter that connects to your cable or DSL modem. If you have not yet installed your network card, install your network card, and then return to this step. You should see one of the following screens:



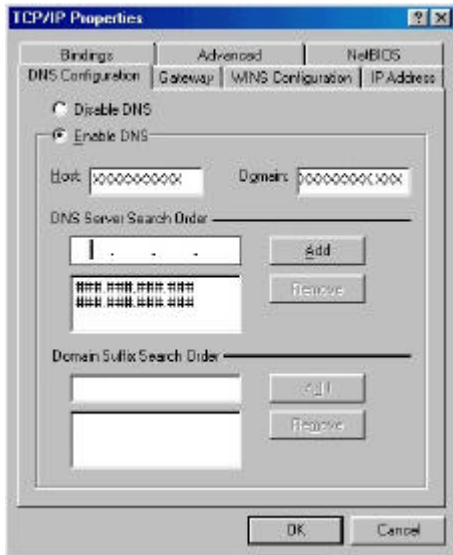
OR



- G. Write down whether "Obtain An IP Address Automatically" or "Specify an IP Address" is checked.
- H. If Specify is checked, write down the IP Address ____ . ____ . ____ . ____ and Subnet Mask ____ . ____ . ____ . ____ on a sheet of paper.
- I. If Specify is checked, find and write down your Gateway address ____ . ____ . ____ . ____ by clicking on the Gateway tab.



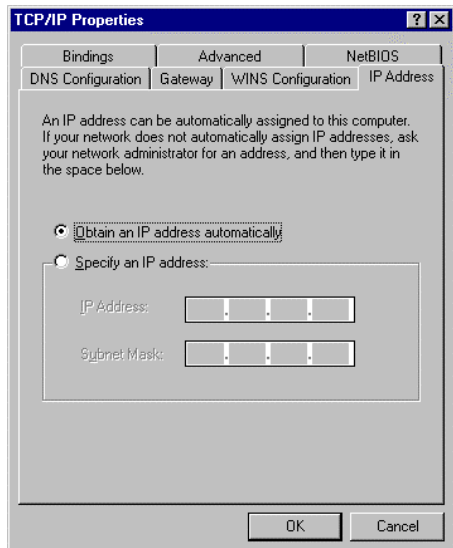
- J. Find and write down your host name _____. It is listed under the DNS Configuration Tab.



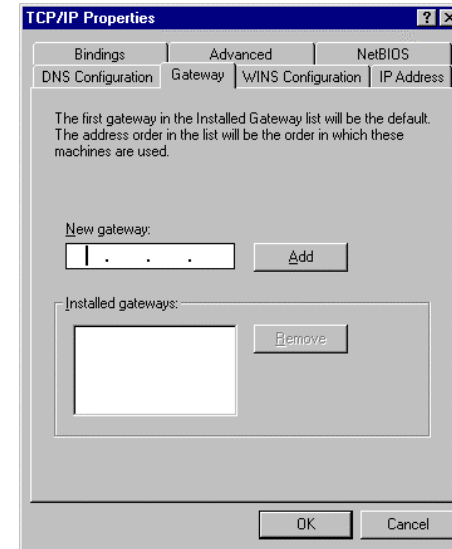
K. If Specify was checked, find and write down your DNS Server addresses _____, _____. There are normally two, but only one is needed. In step 4 all of this information will be required to configure the DI-704 with your provider.

3. Reconfigure your TCP/IP settings

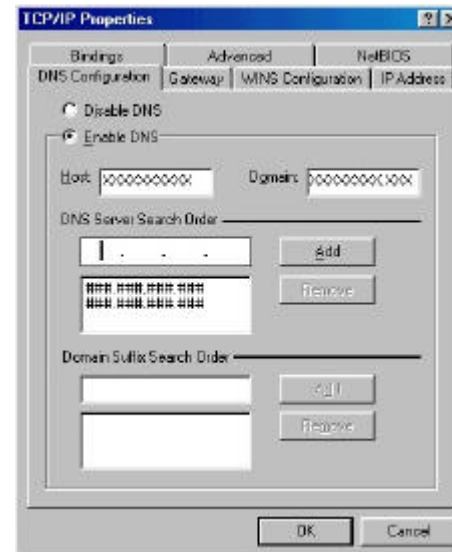
A. Click the *IP Address* tab. Select *Obtain an IP address automatically*.



B. Click the *Gateway* tab. Clear all of the gateway settings. Click on the *OK* button.

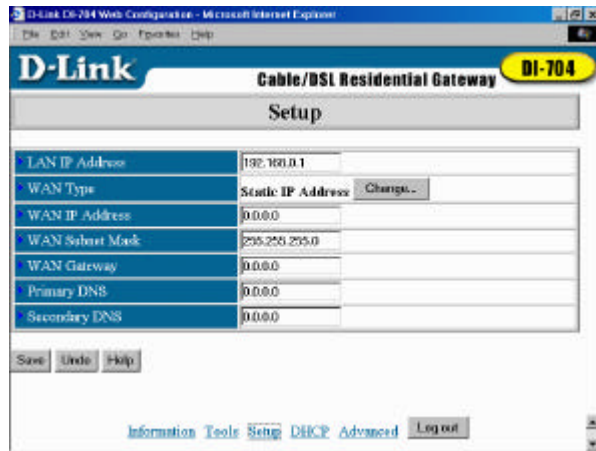


C. Disable DNS settings

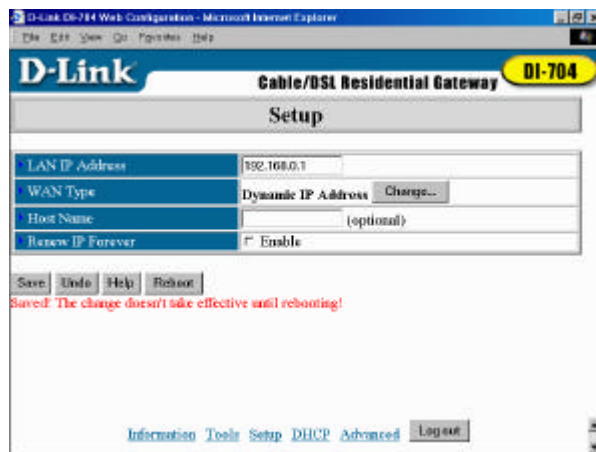


4. Configure the DI-704 without PPPoE

- A. Launch Netscape or Internet Explorer. You must use Netscape 4.0 or Internet Explorer 4.0 or higher. If you are using proxy settings, either remove the proxy settings or add the IP address of the DI-704 into the exceptions box. Type the DI-704's IP address (default is: **http://192.168.0.1**) in the *Location* (for Netscape) or *Address* (for IE) field and press ENTER.
- B. Key in the system password (the factory default setting is "admin") in the **System Password** field and click on the **Log in** button.
- C. Press the **Setup** button and the following screen will be shown.



- D. Press the **Change ...** button, select the WAN type you use, and then press the **Save** button. The following screen will appear.



- E. Key in the proper values for the setting items shown on the page. Use the settings that you saved from your step 2. For the meaning of the items, please press the **Help** button or refer to the **User Manual – Chapter 4.4**.
- F. After all of the items are set, press the **Save** button and reboot the DI-704.

You have now configured the DI-704. Refer to the User manual to review features and operation instructions that you may need for your use.

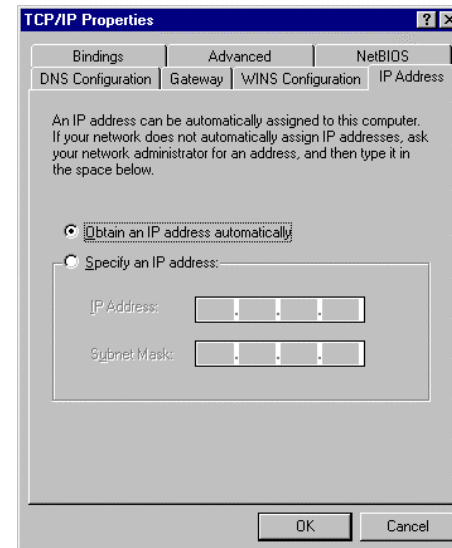
5. Configure the DI-704 with PPPoE

What is PPPoE?

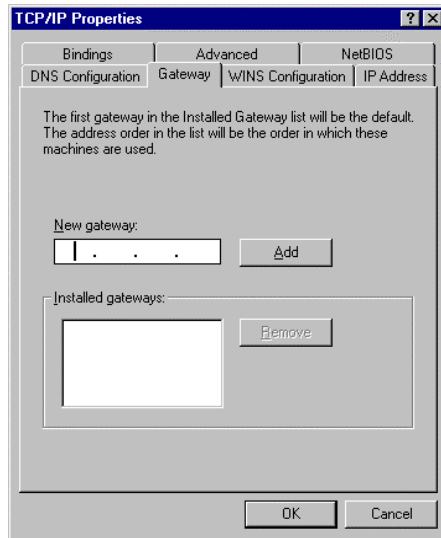
PPPoE stand for Point-to-Point Protocol over Ethernet. It is a non-standard method of connecting to your ISP to gain an IP address. It relies upon a software client that is provided by the ISP. An IP address is required to gain a connection to the Internet. How can I tell if I am using PPPoE?

PPPoE requires a client on your computer. If you have a broadband connection and have to login to your provider in a similar fashion to how you would dial in with a modem, you are probably using PPPoE. If you are simply connected to the Internet when you turn on your computer, you probably are not. The safest way to check is to call your provider, or read the documentation provided with your Internet service to determine if you currently use PPPoE.

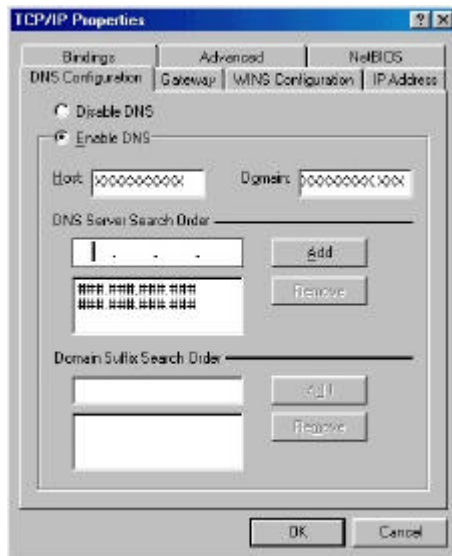
- A. Click the **IP Address** tab. Select **Obtain an IP address automatically**.



B. Click the **Gateway** tab. Clear all of the gateway settings. Click on the **OK** button.



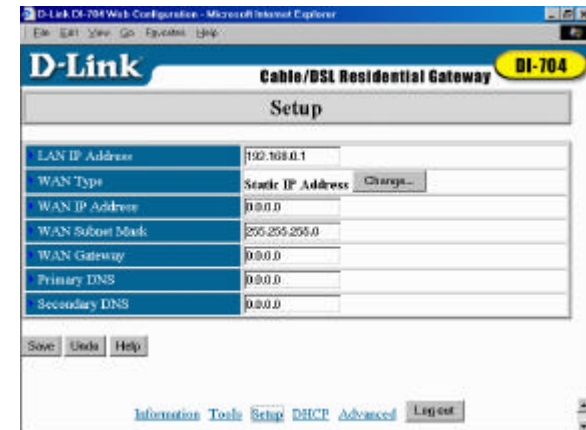
C. Disable DNS settings



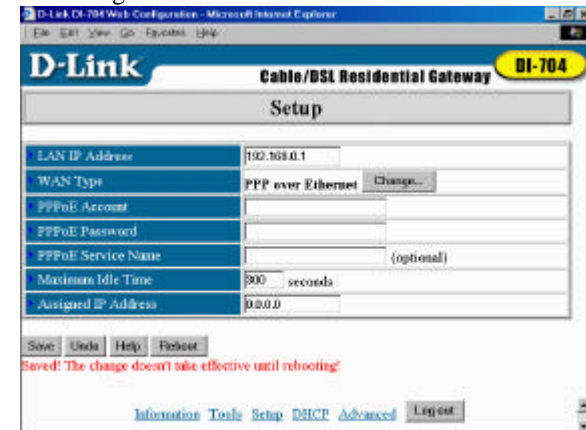
D. Launch Netscape or Internet Explorer. You must use Netscape 4.0 or Internet Explorer 4.0 or higher. If you are using proxy settings, either remove the proxy settings or add the IP address of the DI-704 into the exceptions box. Type the DI-

704's IP address (default is: **http://192.168.0.1**) in the *Location* (for Netscape) or *Address* (for IE) field and press ENTER.

- E. Key in the system password (the factory default setting is "admin") in the **System Password** field and click on the **Log in** button.
- F. Press the **Setup** button and the following screen will be shown.



- G. Press the **Change ...** button, select PPPoE over Ethernet, and then press the **Save** button. The following screen will be shown.



- H. Key in the proper values for the setting items shown on the page. For the meaning of the items, please press the **Help** button or refer to the **User Manual – Chapter 4.4**. After all of the items are set, press the **Save** button and reboot the DI-704.

You have now configured the DI-704. Refer to the User manual to review features and operation instructions that you may need for your use.