

D-Link Quick Installation Guide

This product works with the following operating system software: **Windows XP, Windows 2000, Windows Me, Windows 98SE**



DWL-G120
AirPlus G™
Wireless USB Adapter

Before You Begin

You must have at least the following:

- You will need a computer with an available USB port to connect the DWL-G120 Wireless USB adapter.
- At least a 300MHz processor and 32MB of memory
- An 802.11b/g Access Point (for Infrastructure Mode) or another 802.11b/g Wireless Adapter (for Ad-Hoc; Peer-to-Peer networking mode.)
- Properly Installed and Working USB Controller.

Check Your Package Contents

These are the items included with your DWL-G120 purchase:



DWL-G120 Wireless USB Adapter



CD-ROM (containing Drivers, Manual and Warranty)



Mini-USB 2.0 Cable

If any of the above items are missing, please contact your reseller.

1

Insert the D-Link CD-ROM Into Your Computer

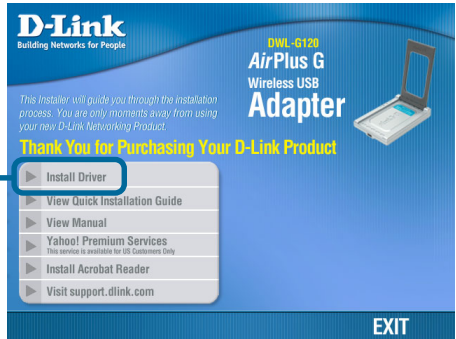
Turn on the computer and Insert the D-Link AirPlus G™ DWL-G120 Driver CD in the CD-ROM drive.

The step-by-step instructions that follow are shown in Windows XP. The steps and screens are similar for the other Windows operating systems

 Do **NOT** install the DWL-G120 USB Wireless Adapter into your computer before installing the driver software on the D-Link CD!

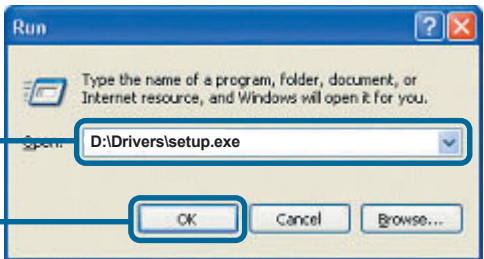
The Install Screen will appear.


Click **Install Driver**



If the CD Autorun function does not start automatically go to **Start > Run** on your computer, then type **D:\Drivers\Setup.exe.** If it does start, proceed to the next screen.

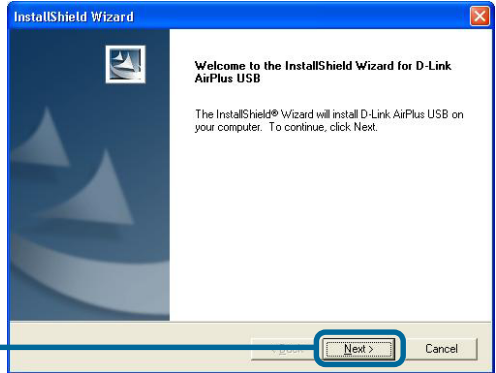
Type **“D:\Drivers\Setup.exe.”**

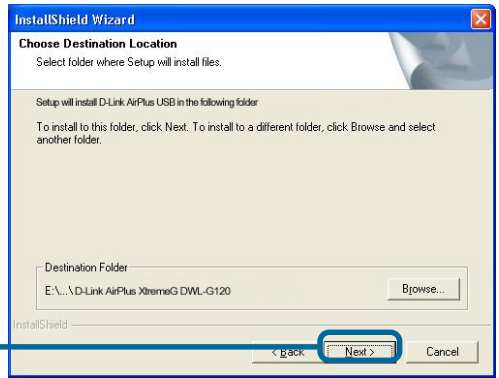


 The letter **“D”** represents the letter of the CD-ROM drive. Your CD-ROM drive may be a different drive letter.

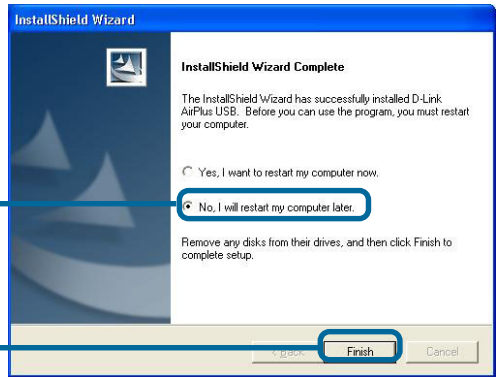
Click **OK**

Click **Next**





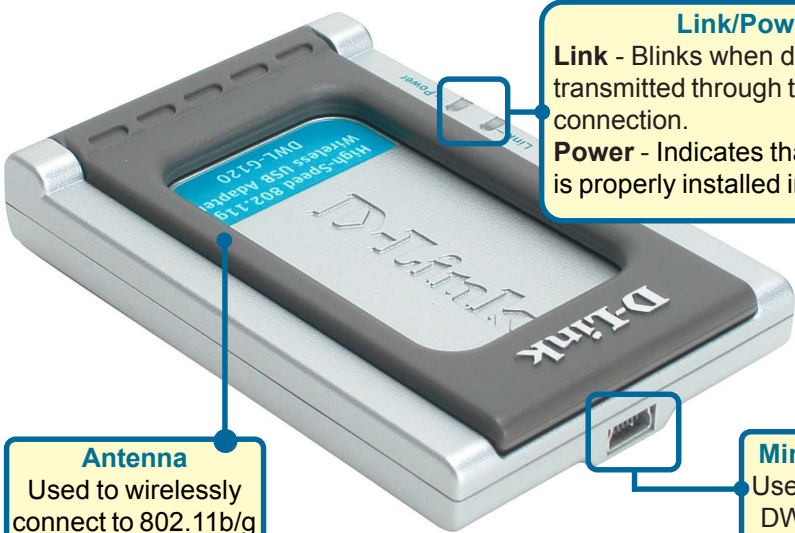
Click Next



Click No, I will restart my computer later

Click Finish

Shut down Your Computer



Antenna
 Used to wirelessly connect to 802.11b/g networks.

Link/Power LED
Link - Blinks when data is being transmitted through the wireless connection.
Power - Indicates that the DWL-G120 is properly installed in the computer.

Mini-USB 2.0 Port
 Used to connect the DWL-G120 to your computer.

2 Installing the DWL-G120 Wireless USB Adapter to Your Computer

A. Make sure to turn off your computer.



B. Firmly insert the larger plug end of the USB cable into your computer's USB Port.



C. Firmly insert the smaller plug end of the USB cable into the DWL-G120.

3 Restart Your Computer

When you restart your computer this **Found New Hardware Wizard (Windows XP)** screen will appear:


Select **Install the software automatically (Recommended)**

Click **Next**



Windows XP will automatically load the driver files.



 For Windows XP/2000, a screen similar to this **Digital Signature Not Found** screen may appear during the installation.



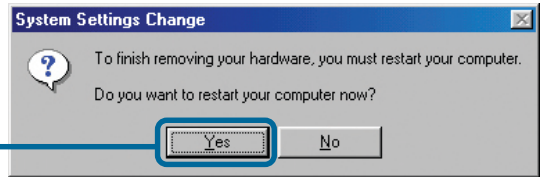
Click **Continue Anyway**

Click **Finish**



For Windows Me and 98SE, this screen may appear.

Click **Yes** to reboot



Restart Your Computer and you are Finished!

4

Your Installation is Complete!

After you have continued in Windows XP (or after the computer restarts in the other Windows operating systems), the D-Link *AirPlus G™* DWL-G120 **Configuration Utility** will automatically start and the utility icon will appear in the bottom right hand corner of the desktop screen (systray). **If this icon appears GREEN, then you have successfully installed the DWL-G120, are connected to a wireless network and are ready to communicate!**

If the utility icon does not appear, double-click the **shortcut icon** that has appeared on your desktop.



Double-click the **utility icon** to use the configuration utility.

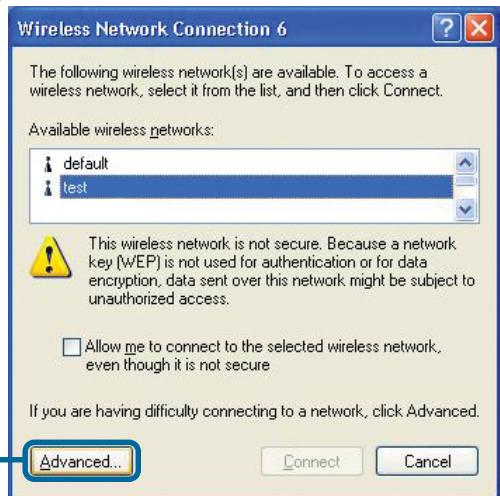


For Windows XP, if you wish to use the **AirPlus G™ Utility**, please do the following steps.

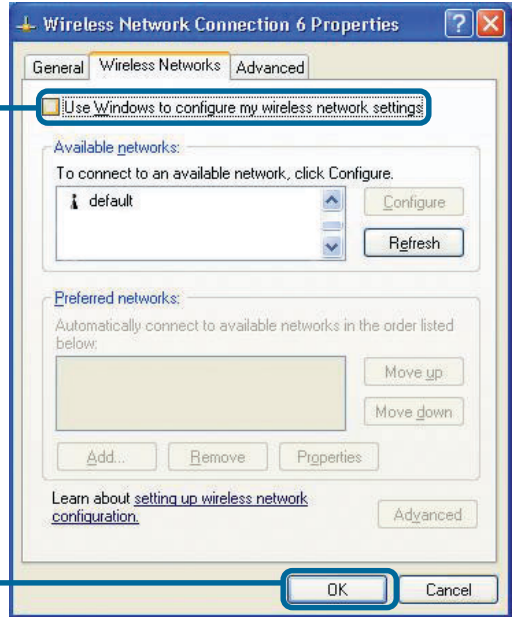
Click the **XP Networking icon** to use the Zero Configuration Wireless Settings.



Click **Advanced**



Uncheck “Use Windows to configure my wireless network settings.”



Click OK

Appendix

Using the Configuration Utility

A. Status: Displays the MAC Address of the Access Point that is associated with the DWL-G120.

B. SSID: The Service Set Identifier is the name assigned to the wireless network. The factory SSID setting is set to **default**

D D-Link AirPlus G Utility

[Link Info. >>>](#)
[Configuration](#)
[Encryption](#)
[SiteSurvey](#)
[About](#)

A Status: Associated BSSID=00-80-C8-0A-62-30

B SSID: default

C TxRate: 54 Mbps

D Channel: 1 Rescan

E Link Quality/Signal Strength

Link Quality: 98% Signal Strength: 92%

F Data Rate

Transmit: 0 Kbps Receive: 0 Kbps

10000
1000
100
10
0

C. TxRate: The default setting is **Auto**; however, TxRate settings are automatically determined by the DWL-G120 depending on the distance from the access point.

D. Channel: Displays the channel information. By default, the channel is set to **6** and selection is automatically determined by the Access Point.

E. Link Quality /Signal Strength: Displays the wireless signal strength for the DWL-G120 wireless connection to the Access Point.

Appendix (cont.)

G. SSID: The Service Set Identifier is the name assigned to the wireless network. The factory SSID setting is set to **default**.

H. Wireless Mode: The factory setting is set to **Infrastructure Mode**. Ad-Hoc mode is used for Peer-to-Peer networking.

I. Channel: By default, the channel is set to 6. Channel selection is automatically determined by the DWL-G120 depending on the channel setting of the access point selected for association. To change the channel settings, the Wireless Mode must be set to Ad-Hoc mode.

D D-Link AirPlus G Utility

[Link Info.](#) **G** SSID default

[Configuration >>>](#) **H** Wireless Mode Infrastructure

[Encryption](#) **I** Channel 1

[SiteSurvey](#) **J** TxRate Auto

[About](#) **K** Preamble Long Preamble

L Power Mode Continuous Access Mode

Apply Cancel

J. TxRate: You can adjust the transmission rate to get the best signal possible depending on your usage and environment.

K. Preamble: By default, D-Link AirPlus XtremeG™ Products are set to **Long Preamble**. The Preamble defines the length of the CRC block (Cyclic Redundancy Check is a common technique for detecting data transmission errors) for communication between the Access Point and wireless network adapters. High network traffic areas should use the Shorter Preamble type.

L. Power Mode: By default, Power Mode is set to Continuous Access Mode. **Continuous Access Mode** - this default setting consumes the most power. **Maximum Power Save** - this setting consumes the least power. **Power Save** - this setting consumes a moderate amount of power.

Notes

Technical Support

You can find software updates and user documentation on the D-Link website.

D-Link provides free technical support for customers within the United States and within Canada for the duration of the warranty period on this product.

U.S. and Canadian customers can contact D-Link technical support through our website, or by phone.

Tech Support for customers within the United States:

D-Link Technical Support over the Telephone:

(877) 453-5465

24 hours a day, seven days a week.

D-Link Technical Support over the Internet:

<http://support.dlink.com>

email:support@dlink.com

Tech Support for customers within Canada:

D-Link Technical Support over the Telephone:

(800) 361-5265

Monday to Friday 8:30am to 9:00pm EST

D-Link Technical Support over the Internet:

<http://support.dlink.ca>

email:support@dlink.ca

