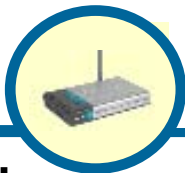


# D-Link

## Quick Installation Guide

This product can be set up using any current web browser, i.e., Internet Explorer 6 or Netscape Navigator 6.2.3.



### DVG-G1402S

Wireless VoIP Router

## Before You Begin

1. If you purchased this Router to share your high-speed Internet connection with other computers, you must have an established Internet account from an Internet Service Provider (ISP).
2. It's best to use the same computer that is connected to your router for configuring the DVG-G1402S Wireless VoIP Router. The DVG-G1402S acts as a DHCP server and will assign all the necessary IP address information on your network. See the Quick Installation Guide or the Manual on the CD-ROM for setting each network adapter to automatically obtain an IP address.

## Check Your Package Contents



- **DVG-G1402S**  
shown with antenna



- **CD-ROM**  
containing Manual and Warranty



- **Ethernet Cable**  
(CAT5 UTP Straight-Through)



- **12V, 1.2A**  
**Power Adapter**

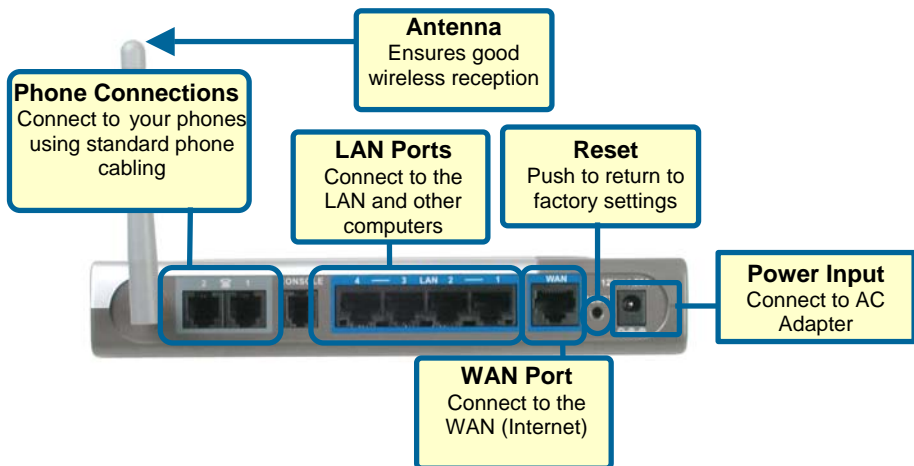


Using a power adapter with a different voltage rating will damage and void the warranty for this product.

*If any of the above items is missing, please contact your reseller.*

# 1

## Connecting the Router to your Computer



- A.** First, connect the power adapter to the power input at the back panel of the DVG-G1402S and then plug the other end of the power adapter to a wall outlet or power strip. On the front of the device, the Power LED will turn ON to indicate proper operation.
- B.** Insert one end of the Ethernet cable into an Ethernet (LAN) port on the back panel of the DVG-G1402S and the other end of the cable to an Ethernet Adapter or available Ethernet port on your computer.
- C.** Insert one end of the Ethernet Cable (blue) to the LAN or Ethernet port on your Cable or DSL modem, and then connect the other end of the cable to the WAN port of the DVG-G1402S.
- D.** Check the LED display on the front of the Router to confirm that the connections have been made.

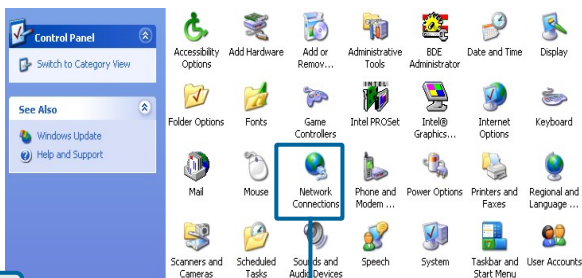
# 2

## Configure IP Settings

To connect to the network, make sure the network adapter in your computer is configured properly. Here's how to configure the network adapter to obtain an IP address automatically for the DVG-G1402S Wireless VoIP Router.

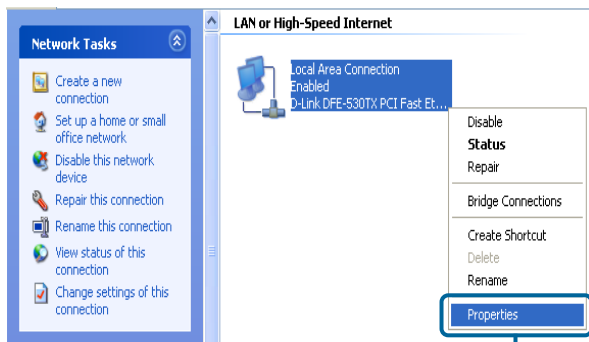
### For Microsoft Windows XP

Go to **Start** > select **Settings** > click **Control Panel** > **Double-click** on the **Network Connections** icon



**Double-click** on **Network Connections**

**Right-click** the **Local Area Connection** icon, and then select **Properties**.

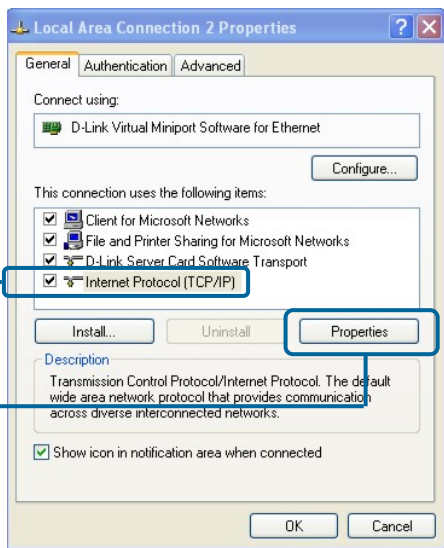


**Select Properties**

The dialog box displays a list of currently installed network items.

Click **Internet Protocol (TCP/IP)**

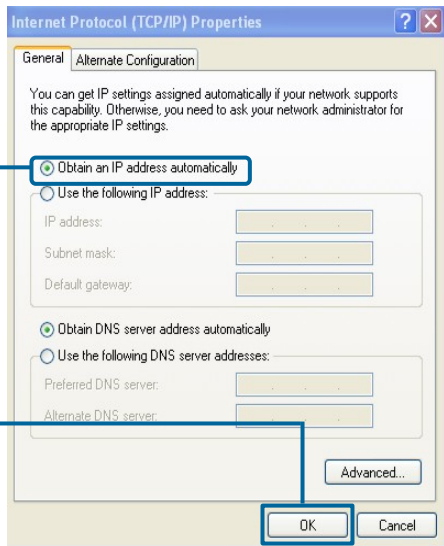
Click **Properties**



Make the choice to get the IP settings assigned automatically.

Select **Obtain an IP address automatically**

Click **OK**



# 3

## Connecting Additional Computers to the DVG-G1402S Wireless VoIP Router

Using additional Ethernet (CAT5 UTP) cables, connect your Ethernet-equipped computers to the LAN ports on the back panel of the DVG-G1402S.

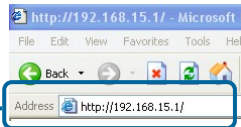
When you have completed the steps in this **Quick Installation Guide**, your connected network should look similar to this:



# 4

## Initial Web Configuration

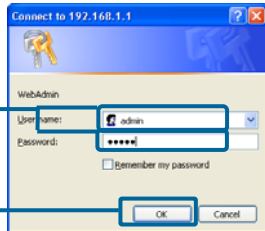
Open your Web browser and type **http://192.168.15.1** into the URL address box. Press **Enter** or **Return**.



The login dialog box appears:

When you first log in, the User name is **admin** and the Password is also **admin**. These may be changed later.

Click **OK**.



The **Home** window appears:



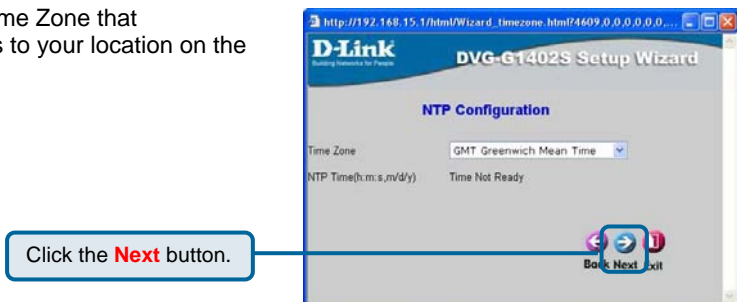
Clicking a hyperlink on the menu on the upper left side of the window brings up a detailed configuration window (see the next section for a brief description of three typical WAN connection examples).

## 5 Configuring the Router using the Setup Wizard

The following screens are displayed when you click **Run Wizard** from the Web configuration **Home** page, as shown above. Included are typical WAN (Internet) connection examples for **Dynamic IP Address** (DHCP), **Static IP Address**, or **PPPoE** connections. Click **Run Wizard** on the menu above to view the following **Wizard** window:



Enter the Time Zone that corresponds to your location on the planet.



Click **Next** to continue.

Enter the WLAN channel and SSID you want to use for your WLAN network. Initially, you can accept the default values and change the router's configuration later.



Click **Next** to continue.

Enter the **Authorization Settings** you want to use for your WLAN network. Initially, you can accept the default value (**No Auth**) and change the router's configuration later. If you choose use Wireless encryption, click the **WEP** or **WPA-PSK** radio button to open the following screen.

**No Auth** disables Wireless LAN authentication.

Remember that each PC on your Wireless network will have to have identical Authorization Settings as the router to connect.



Click **Next** to continue.

**WEP** is for general use and utilizes a Shared Key between cooperating Wireless devices. WEP encrypts the data portion of each frame transmitted from the wireless adapter using one of the predefined keys. Decryption of the data contained in each packet can only be done if the both the receiver and transmitter have the same shared key.

Remember that each PC on your Wireless network will have to have identical Authorization Settings as the router to connect.





Click **Next** to continue.

WPA-PSK (Pre-Shared Key) uses the same encryption as WPA but is implemented differently. All devices on the wireless network share the same key (a Passphrase). Enter the Passphrase in the field above.

Remember that each PC on your Wireless network will have to have identical Authorization Settings as the router to connect.



Click **Next** to continue.

Enter a new password for the DVG-G1402S in the **Password** field.

Confirm the new password by entering it again into the **Verify Password** field.



Click **Next** to continue.





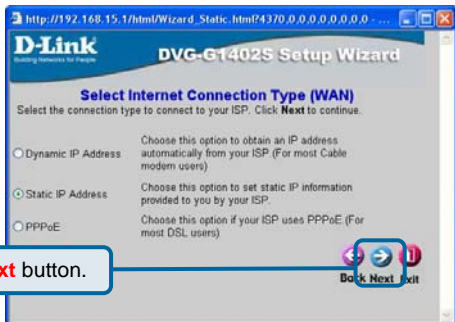
Click the **Next** button to continue.



Click the **Restart** button to save the settings and restart the router.

## Static IP Address

Select **Static IP Address** if your ISP provided you with IP address information that will not change.



Click the **Next** button to continue.

You will need your ISP to provide you with the IP address information about your Internet account, if your ISP statically assigns an IP address to you.

Enter the provided IP address in the **WAN IP Address** field.

Enter the corresponding subnet mask in the **WAN Subnet Mask** field.

Enter the IP address of your ISP's gateway in the **WAN Gateway Address** field.

Enter the IP address of a Domain Name Server (DNS) in the **Primary DNS Address** field.

http://192.168.15.1/html/Wizard\_IpAddr.html?4361.0.0.0.0.0.0.0...

**D-Link**  
Making Networks So Simple

**DVG-G1402S Setup Wizard**

**Set Static IP Address**

Enter in the static IP information provided to you by your ISP. Click **Next** to continue.

WAN IP Address:	5	52	42	135
WAN Subnet Mask:	255	0	0	0
WAN Gateway Address:	5	1	1	254
Primary DNS Address:	0	0	0	0
Secondary DNS Address:	0	0	0	0

(optional)

Back Next Exit

Click the **Next** button.

Click the **Next** button to continue.

http://192.168.15.1/html/Wizard\_Finish\_Static.html?5121.0.0.0.0.0.0.0...

**D-Link**  
Making Networks So Simple

**DVG-G1402S Setup Wizard**

**Setup Completed**

The Setup Wizard has completed. Click on **Back** to modify changes or mistakes. Click **Restart** to save the current settings and reboot the DVG-G1402S.

Back Restart Exit

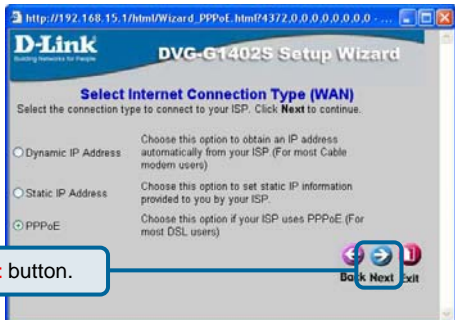
Click the **Restart** button.

Click the **Restart** button to save the settings and restart the router.

# PPPoE

Select **PPPoE** if your ISP uses the Point-to-Point over Ethernet (PPPoE) protocol to make the connection. This is the most common connection type for DSL users.

Click the **Next** button.



Click the **Next** button to continue.

Enter the User Name for your account in the **User Name** field.

Enter the Password for your account in the **Password** field.

Confirm the Password by entering it again in the **Retype Password** field.

Click the **Next** button.



Click the **Next** button to continue.

Click the **Restart** button.



Click the **Restart** button to save the settings and restart the router.