

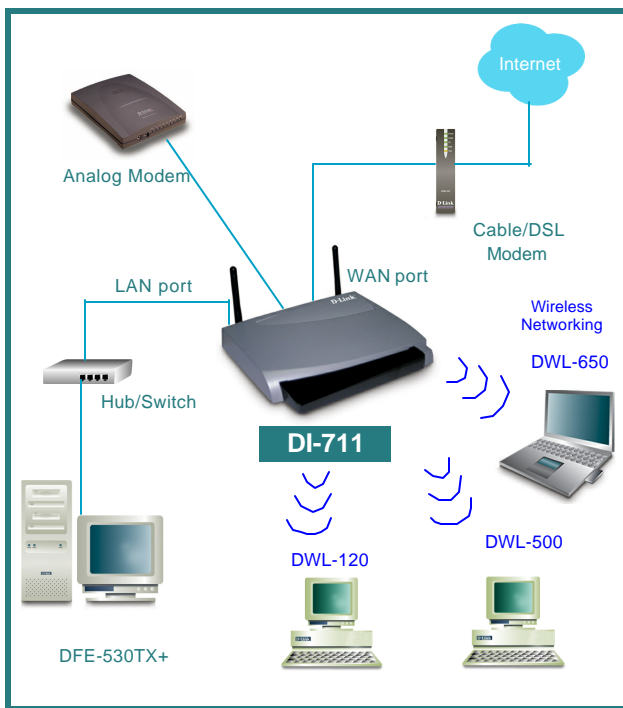
DI-711

Wireless Broadband Router

1

Connecting the DI-711 Wireless Router to your network

When you have completed the steps in this installation guide, your connected network may look something like this:



First,
Plug in the power supply as shown.
The Power LED will turn on
to indicate proper operation.



1

Connecting the DI-711 Wireless Router to your network *continued*

Next, connect the WAN port to the Cable/DSL modem. The WAN LED will indicate connection.



Finally, connect the LAN port to a hub or switch.

Note: A computer with a network adapter can also be connected to the LAN port with a crossover cable.



2

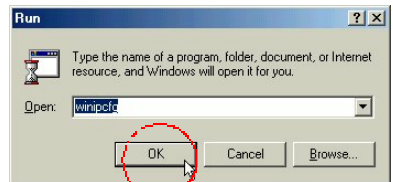
Installing the DI-711 using the Setup Wizard

Checking the IP Address of the computer being used to configure the DI-711 Wireless Router

Go to Start>Run

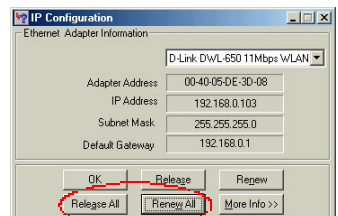
Type in “WINIPCFG”.

The IP address of the computer must be between 192.168.0.2 and 192.168.0.254 in order to configure the router.



Click on the “Release All” and then on the “Renew All” button to obtain an IP address from the broadband router between 192.168.0.100. and 192.168.0.199.

Note: If you are manually assigning a static IP, please refer to Appendix A.

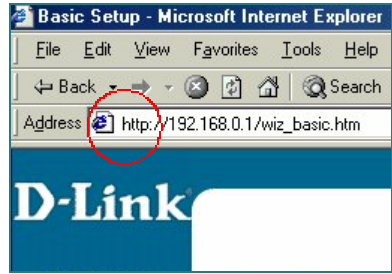


2

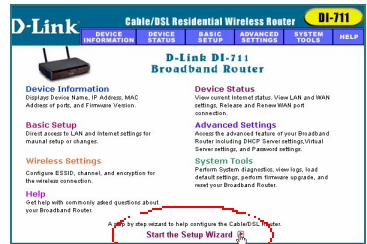
Installing the DI-711 using the Setup Wizard *continued*

Open the web browser, and type **192.168.0.1** into the URL address box.

Note: Please disable any proxy server setting for the web browser.



Click on **“Start the Setup Wizard”** at the bottom of the Main Menu.



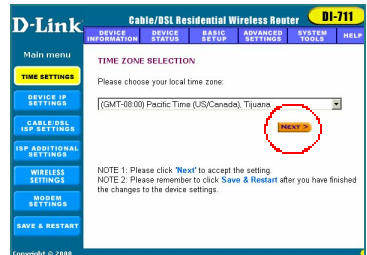
When the login screen appears, type **“admin”** in the User Name box, and leave the Password field blank.

Click **OK**.



At this window, select the local time zone.

Click **Next**, to continue.

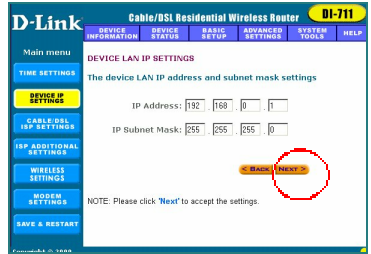


2

Installing the DI-711 using the Setup Wizard *continued*

The default IP address of the LAN port is set to 192.168.0.1.

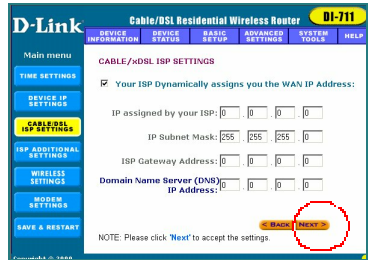
Click **Next** to accept the default settings.



By default, the WAN port is set to automatically obtain an IP address from the ISP.

To assign a static IP for the WAN port, remove the checkmark and enter the settings.

Click **Next**.



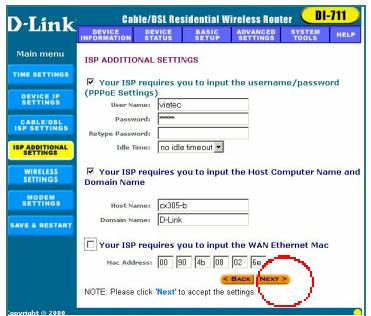
DSL users:

If you are using a PPPoE client to connect to your DSL provider, then place a checkmark on the first box, and enter the user name and password in the appropriate box.

Cable modem users:

If you are using a cable modem, then place a checkmark on the second box and enter the host and domain name given by your cable provider.

Click **Next**.

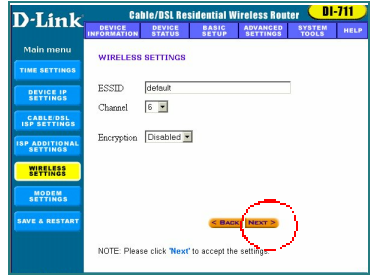


2

Installing the DI-711 using the Setup Wizard *continued*

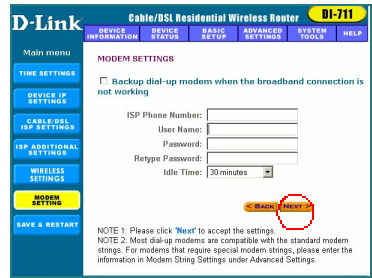
The DI-711 default wireless settings will work out of the box with any other D-Link Air products.

Click Next to accept the default settings.



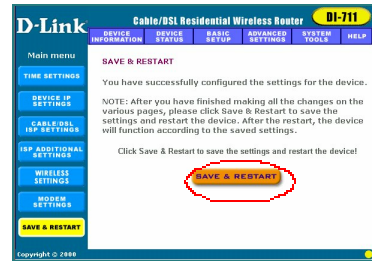
If you are using a backup dial-up modem with the wireless router, place a checkmark in the box and enter the settings for the dial-up connection.

Click Next.



At this window, **Click "Save and Restart,"** to finish the Setup Wizard.

After the DI-711 has restarted, the installation is complete!



3

Checking the connection to the Internet

To check the connection, open the web browser and go to your favorite website.

If you are unable to browse, please do the following:

1. Refer to Appendix B to check your connection to the wireless router.
2. Use “Help” on the Main Menu.
3. Refer to the troubleshooting section in the user’s manual.

The screenshot displays the D-Link website interface. At the top, there are navigation links: Online Store, Products, Sales Support, For the Press, and Tech Support. The main content area features a search bar, international office links, and a section for awards. A prominent award is highlighted: 'PC MAGAZINE EDITORS' CHOICE' for the D-Link DWL-1000AP Wireless Access Point, dated March 06, 2003. A quote from PC Magazine states: "The D-Link DWL-1000AP and wireless PC Cards were clearly the best in this category. We found the D-Link access point to be the best-engineered, best-designed, and top-performing product we reviewed." Below this, there are images of the D-Link DWL-1000AP Wireless Access Point and the D-Link Air Wireless PC/MCIA Adapter. A 'Go to Wireless' button is also visible. The NetworkWorld logo is at the bottom right.

APPENDIX A

Assigning a Static IP Address

If the network adapter is unable to obtain an IP address automatically from the Broadband Router,

Click on “Specify an IP Address.”

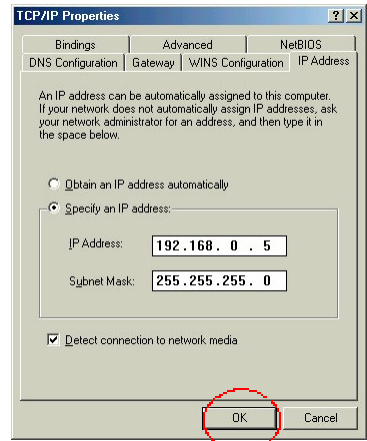
Enter an IP address between 192.168.0.2 to 192.168.0.99 into the IP Address box.

Enter the Subnet mask of 255.255.255.0

Enter the Gateway IP Address of 192.168.0.1

Click OK

Note: Most Operating Systems will require a restart.



APPENDIX B

Checking Your Network Connections

Use “Ping” to check your network connections.

Go to **START>RUN**

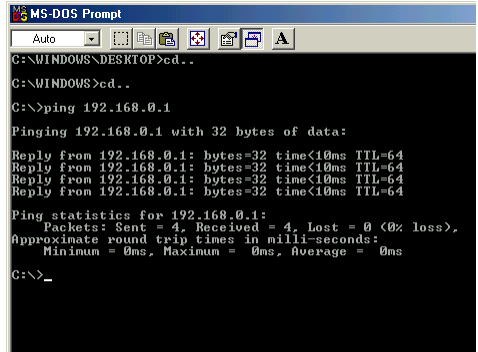
Type “**command**” in the box.

Click OK.

Type “**ping 192.168.0.1**”, which is the IP address of the LAN port of the Broadband Router.

Hit the “**Enter**” key.

A successful connection will show four replies, as show at left.



```
MS-DOS Prompt
Auto
C:\WINDOWS\DESKTOP>cd..
C:\WINDOWS>cd..
C:\>ping 192.168.0.1
Pinging 192.168.0.1 with 32 bytes of data:
Reply from 192.168.0.1: bytes=32 time<10ms TTL=64
Reply from 192.168.0.1: bytes=32 time<10ms TTL=64
Reply from 192.168.0.1: bytes=32 time<10ms TTL=64
Reply from 192.168.0.1: bytes=32 time<10ms TTL=64
Ping statistics for 192.168.0.1:
    Packets: Sent = 4, Received = 4, Lost = 0 (0% loss),
    Approximate round trip times in milli-seconds:
        Minimum = 0ms, Maximum = 0ms, Average = 0ms
C:\>_
```