

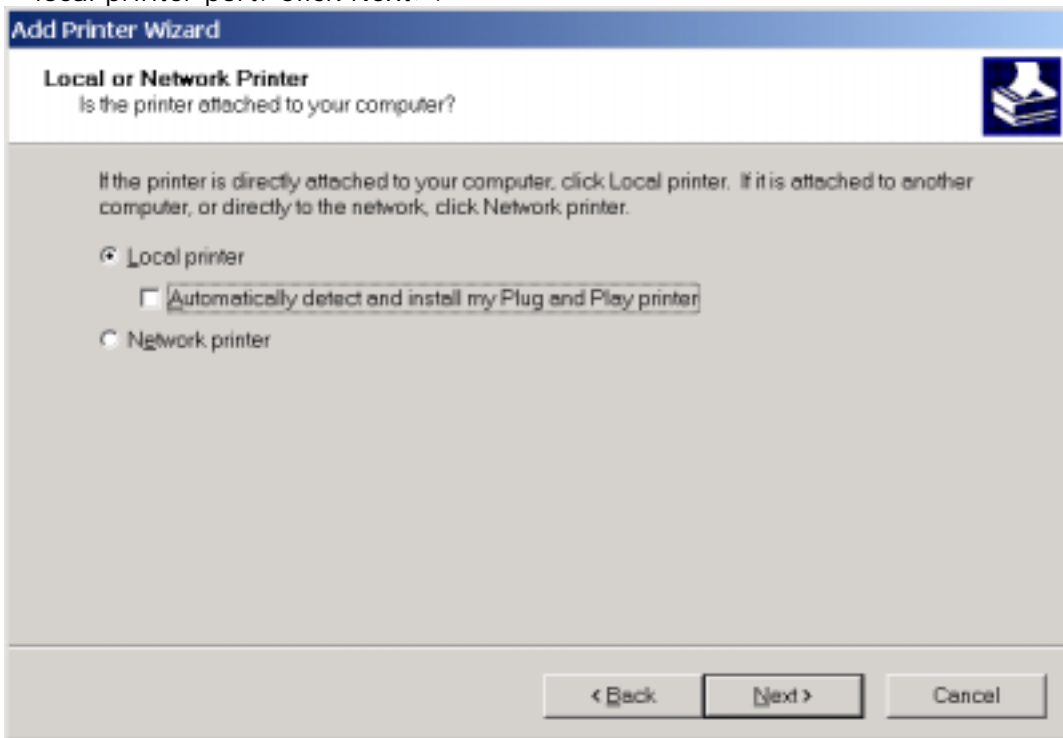
How to Install D-Link Print Server in the Microsoft Windows 2000 TCP/IP environment

To create a TCP/IP remote printer Microsoft TCP/IP printing support must be installed. The procedure is as follows.

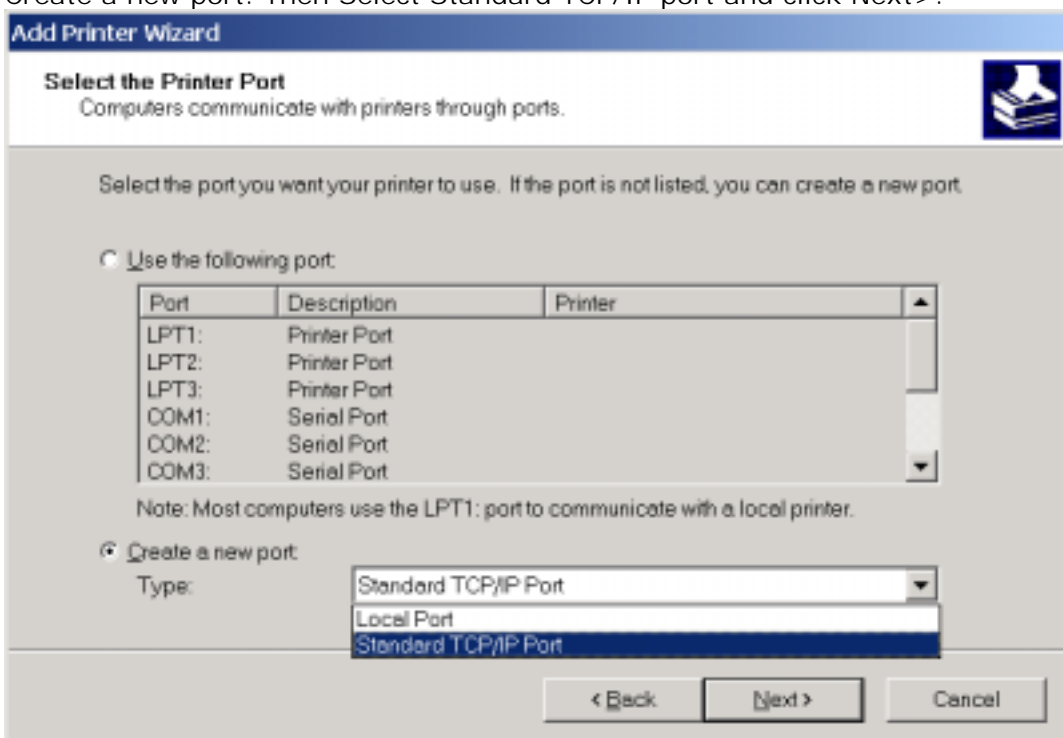
1. To start the Add Printer Wizard, select Settings - Printers from the Start menu and double-click on the Add Printer icon.



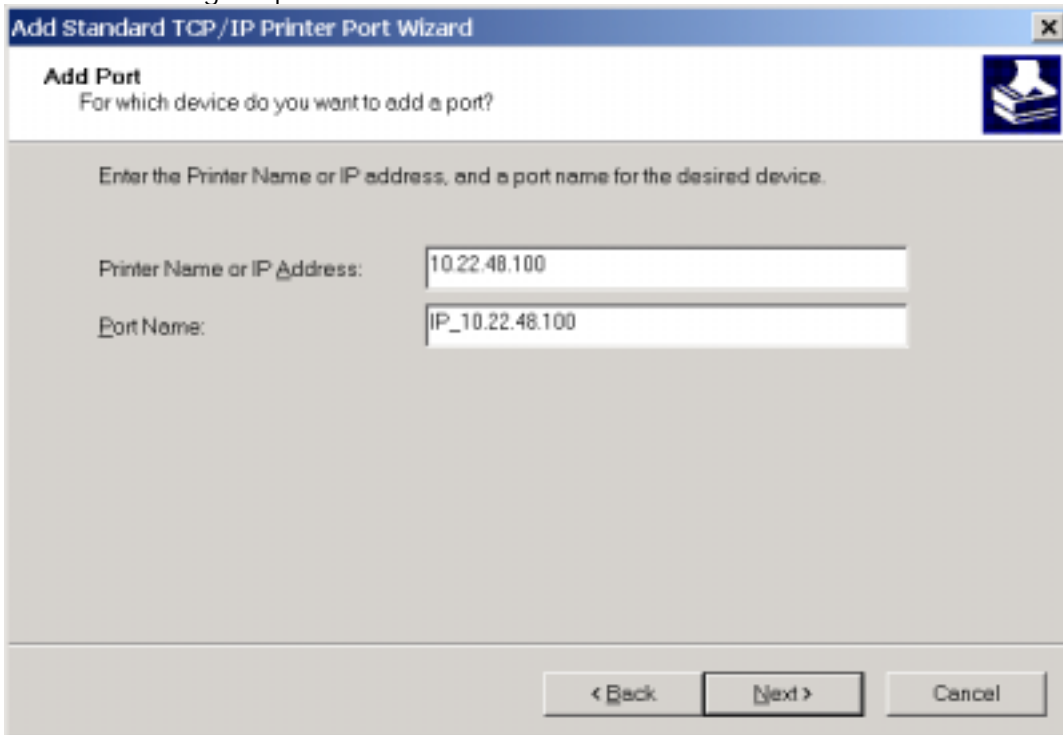
2. The Wizard asks you to select between Local printer and Network printer. Select Local printer (Disable Automatically detect my printer), as the DP-100/101/300/301/301P emulates a local printer port. Click Next>.



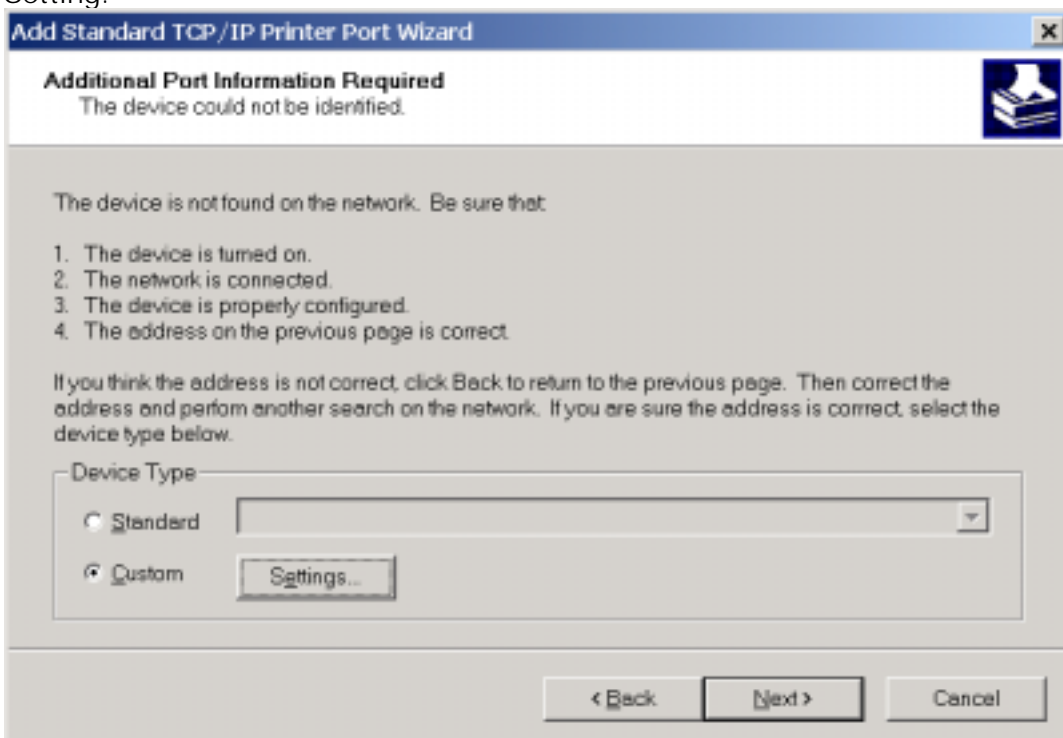
3. The Wizard asks you to select between Use the following port and Create a new port. Select Create a new port. Then Select Standard TCP/IP port and click Next>.



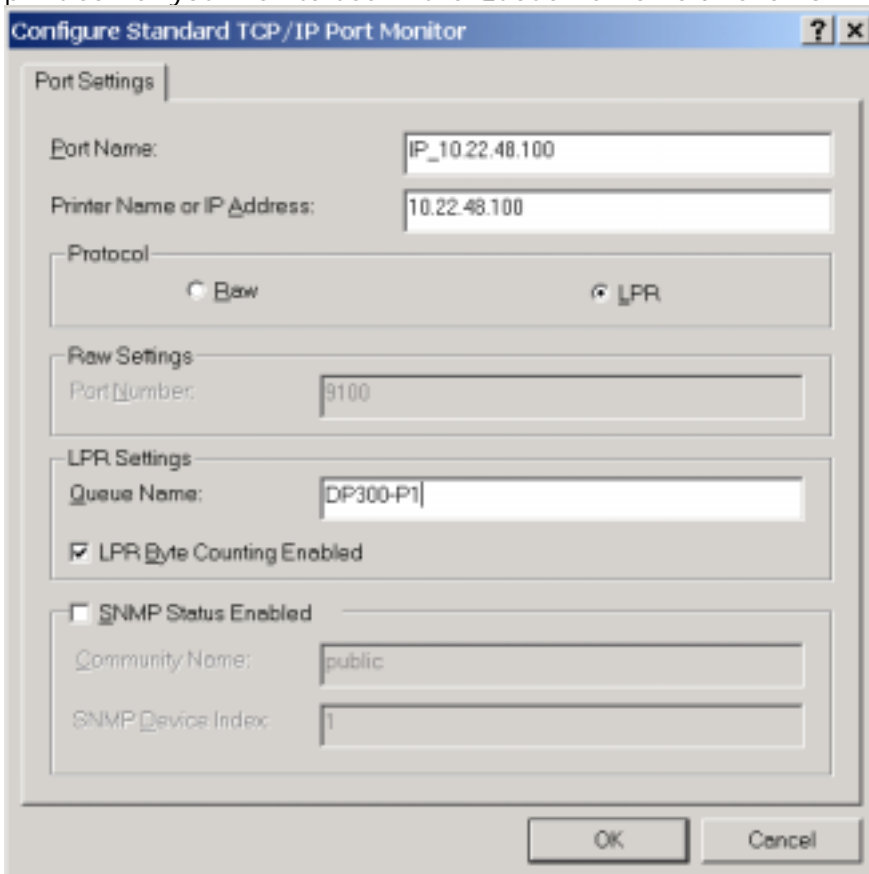
4. From the Add Standard TCP/IP Printer Port dialog, enter the IP address of your print server and define a logical port name. Click Next>.



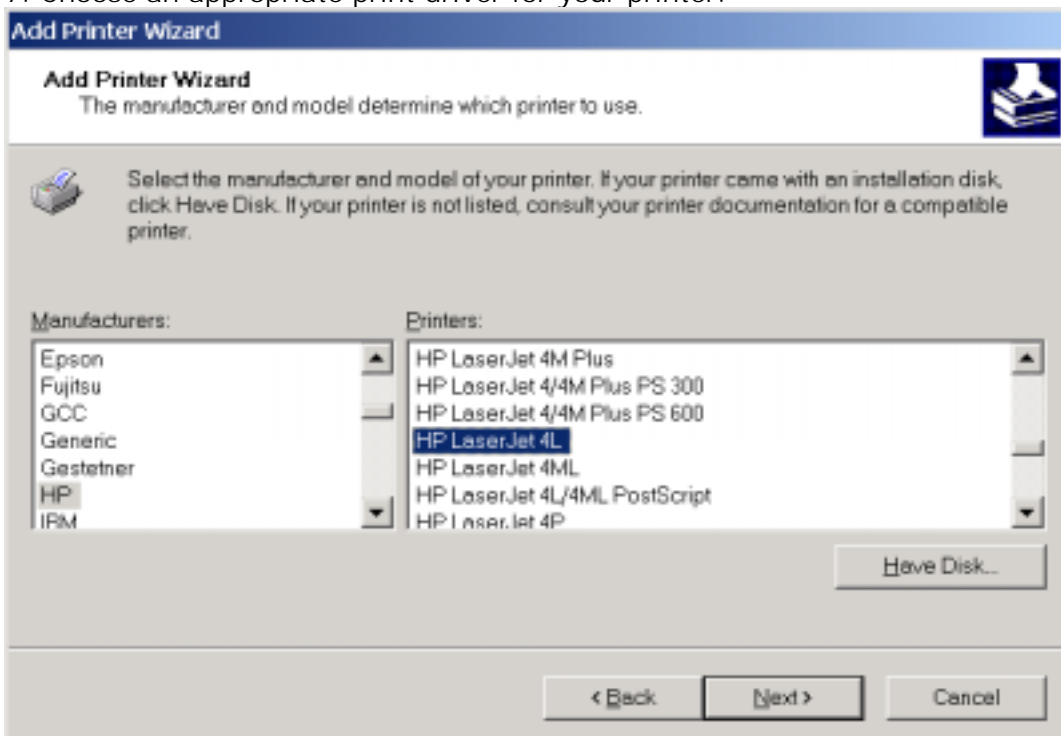
5. The Wizard asks you to select between Standard and Custom. Select Custom and click Setting.



6. From the Configure Standard TCP/IP Port dialog, select LPR and enter the port name of your print server you wish to use in the Queue Name field. Click OK.



7. Choose an appropriate print driver for your printer.



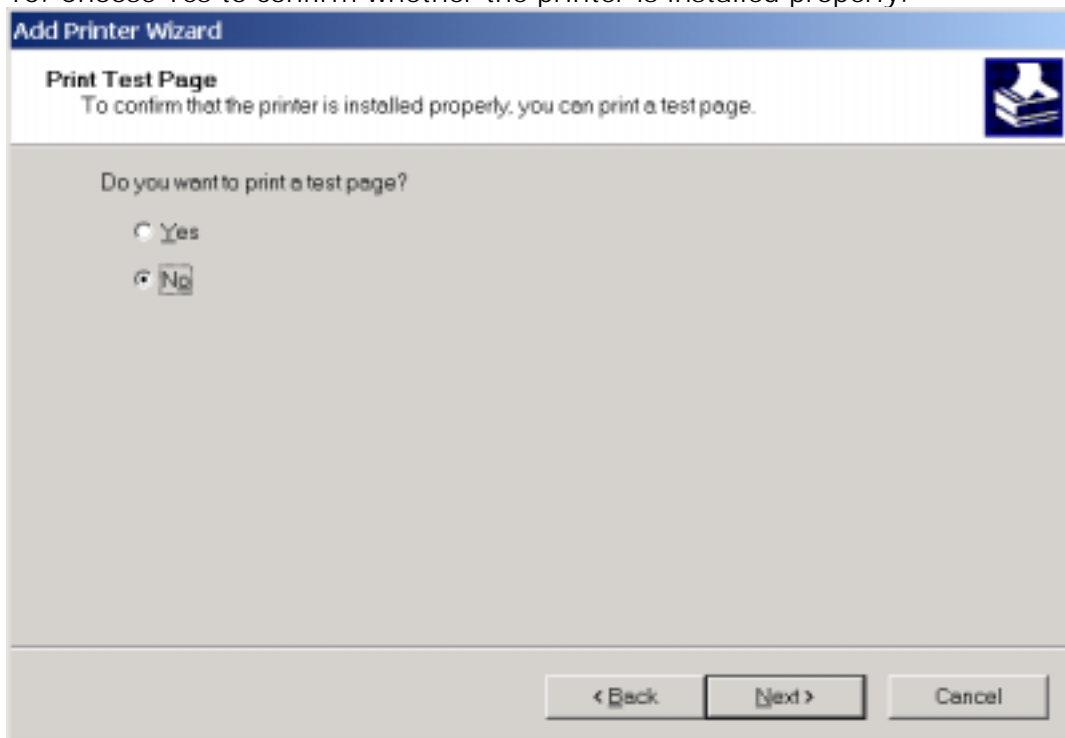
8. Enter an appropriate name for your printer.

The screenshot shows the 'Add Printer Wizard' dialog box with the title bar 'Add Printer Wizard'. The main heading is 'Name Your Printer' with a sub-heading 'You must assign a name for this printer.' and a printer icon. Below this, there is a text box for 'Printer name:' containing 'HP LaserJet 4L'. A note states: 'Supply a name for this printer. Some programs do not support server and printer name combinations of more than 31 characters.' At the bottom, there are three buttons: '< Back', 'Next >', and 'Cancel'.

9. Choose whether you wish to share the printer with other network users and enter an appropriate name.

The screenshot shows the 'Add Printer Wizard' dialog box with the title bar 'Add Printer Wizard'. The main heading is 'Printer Sharing' with a sub-heading 'You can share this printer with other network users.' and a printer icon. Below this, there is a text box for 'Share as:' containing 'HPLaserJet 4L'. A note states: 'Indicate whether you want this printer to be available to other users. If you share this printer, you must provide a share name.' There are two radio buttons: 'Do not share this printer' (unselected) and 'Share as:' (selected). At the bottom, there are three buttons: '< Back', 'Next >', and 'Cancel'.

10. Choose Yes to confirm whether the printer is installed properly.



11. You have successfully added a new printer. Click Finish.

