

DSL-504 ADSL Router Installation Guide

Firmware version: V 2.0x
OS Supported: Supports all major OS, requires TCP/IP

Installation

The DSL-504 is an ADSL router with built in 4-port 10/100Mbps Switch.

This set-up is applicable to all operating systems that have a JAVA enabled web browser.

The unit has a factory default IP address of 192.168.0.1 so please ensure there is no device on the same network using this IP address when you configure the unit for the first time. After configuration you can change the IP address if need be.

In the United Kingdom, the main implementation of ADSL is using the RFC-2364 which is PPPoA. This guide assumes that you have this type of connection. Check with your service provider if you are unsure.

PC Configuration

Brief configuration of PC .

Win9x:

Go to Start | Run, enter WINIPCFG <enter>;
Select the Network Card from the Drop-Down menu;
Click 'More Info';
Click 'Release';
Click 'Renew';

Observe the following parameters which should have been obtained:

IP Address: 192.168.0.x ('x' probably =2)
Subnet Mask: 255.255.255.0
Default Gateway: 192.168.0.1
DHCP Server: 192.168.0.1
DNS Servers: As per router's DHCP page, eg:
192.168.0.1 and 213.120.62.100

Windows 2000 / XP:

There is no winipcfg in Windows 2000 / XP.

Go to a command prompt and issue the commands:

ipconfig /release
ipconfig /renew
ipconfig /all

The final command will display all the current IP configuration.
Observe the following parameters which should have been obtained:

IP Address: 192.168.0.x ('x' probably =2)
Subnet Mask: 255.255.255.0
Default Gateway: 192.168.0.1
DHCP Server: 192.168.0.1
DNS Servers: As per router's DHCP page, eg:
192.168.0.1 and 213.120.62.100

Router Configuration

Step 1 – Log In

Logon to the unit via the default IP address of 192.168.0.1
Please check that your PC is in the 192.168.0.x IP range.

Open your web browser and in the address bar enter [Http://192.168.0.1](http://192.168.0.1) you should now be presented with the Login Screen.

Click on the 'Login to the web-based management module' button (**Fig.1**)

Factory Defaults are:

Username = **admin**

Password = **admin**

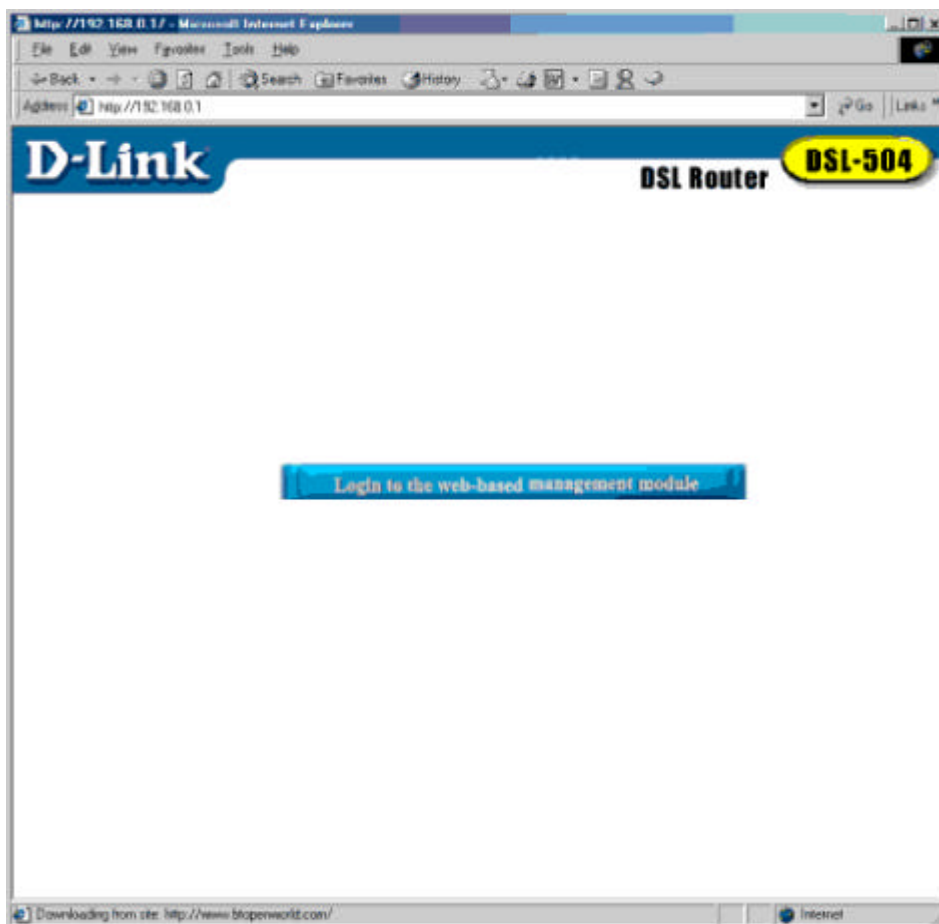


fig.1

Step 2 – Go to the PPPoA page

You should be presented with the Router/Bridge Configuration page.

Select Encapsulation Protocol as **Router with PPPoA** (fig. 2)

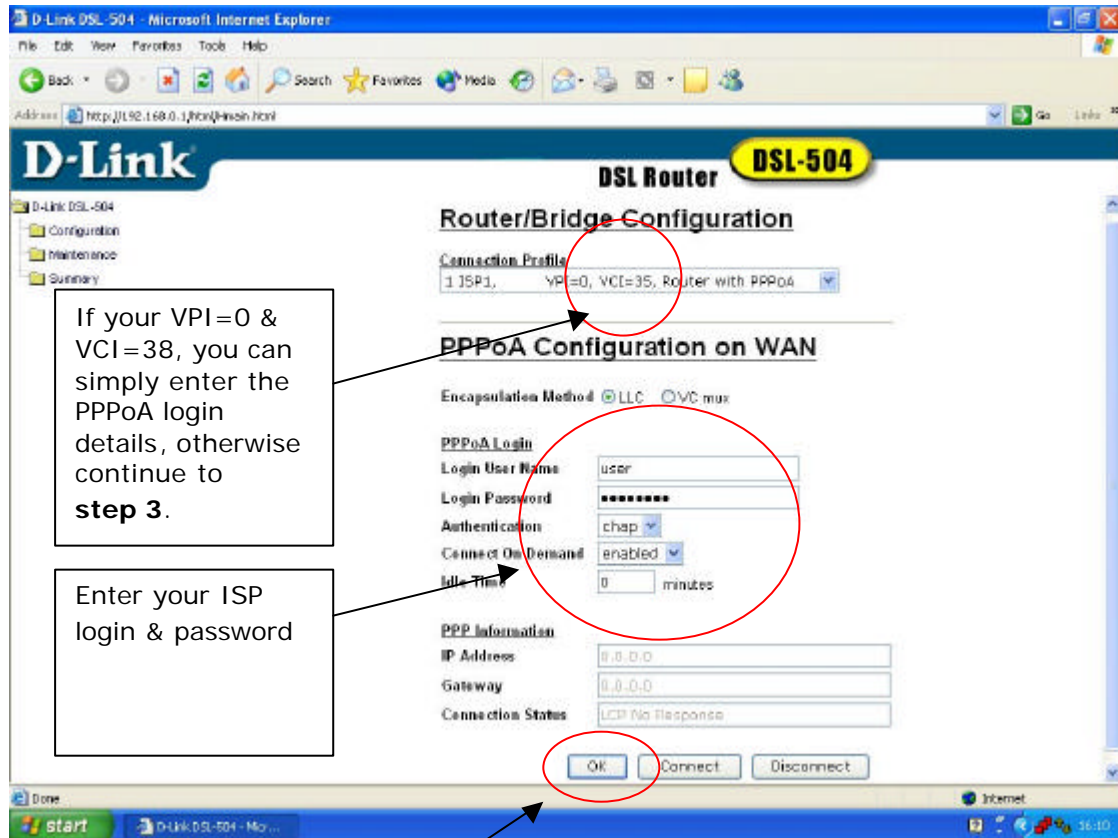


fig. 2

Click ok, save & reboot

Go to **step 6** to check the settings and connection status

Step 3 PPPoA Configuration

On the menu click on configuration,
Then click on connection profile.

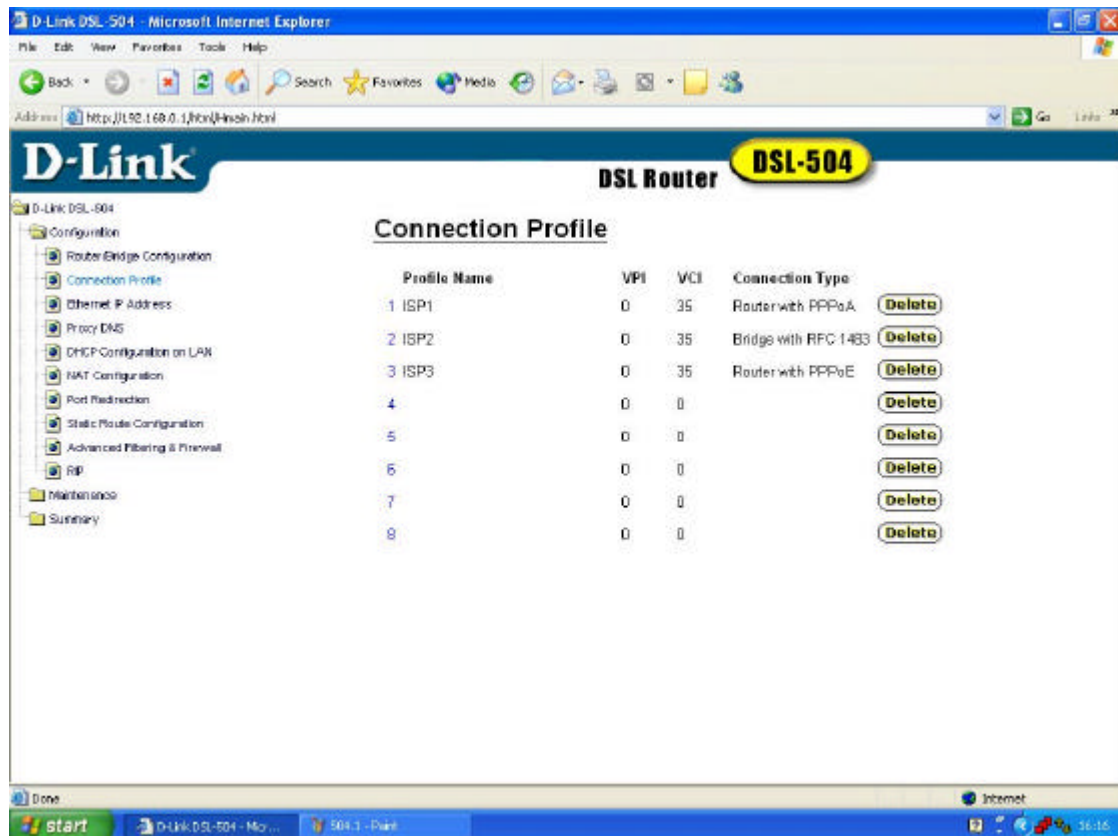
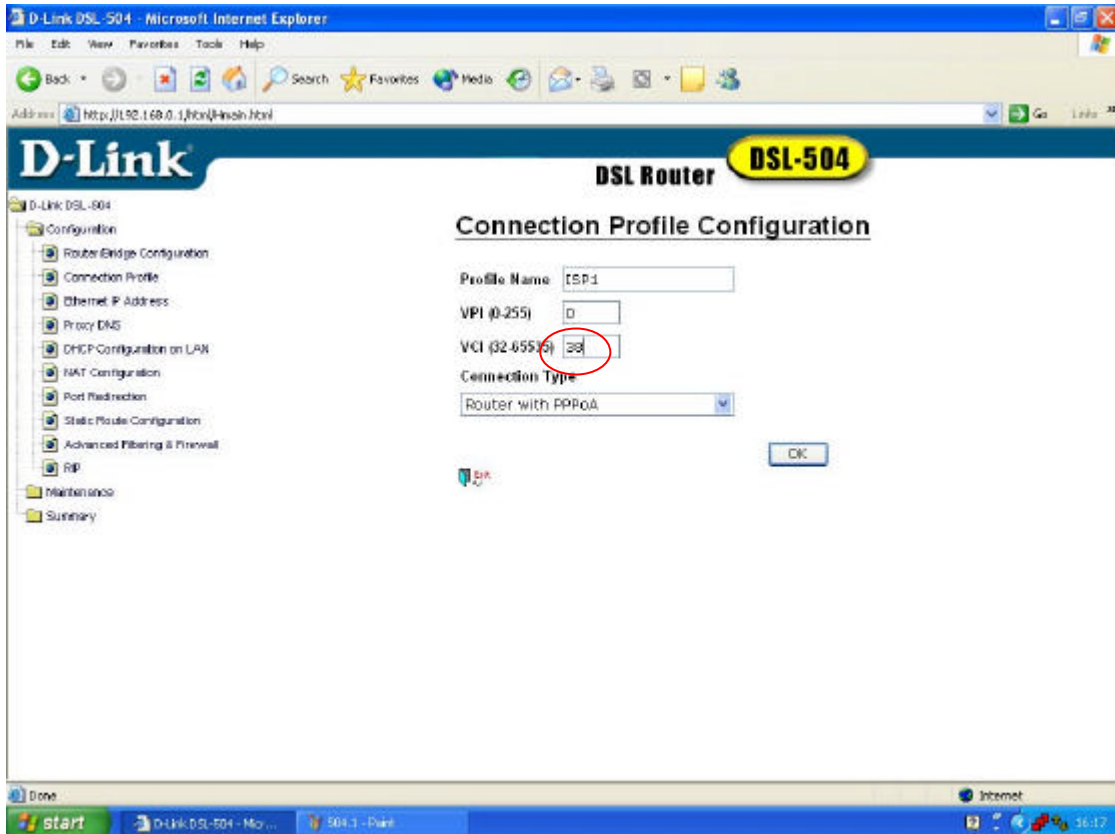


fig. 3

Then click on 1 ISP1 (to change the VCI value from 35 to 38)



Change the VCI value from 35 to 38 and click OK

Step 4- Save the changes

Save the changes. **(fig. 4)**

Click OK

It may take up to a minute.

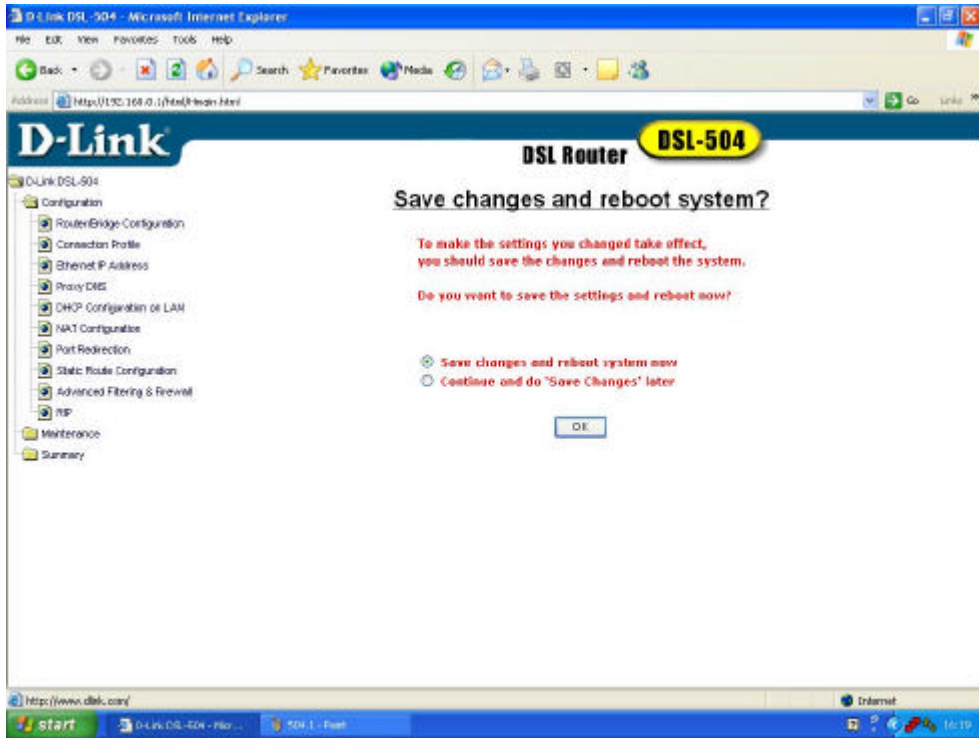


fig. 4

The System will then restart

Step 5 – Log On

Once you log back in, you are back at the Router/Bridge Configuration page (fig.6)

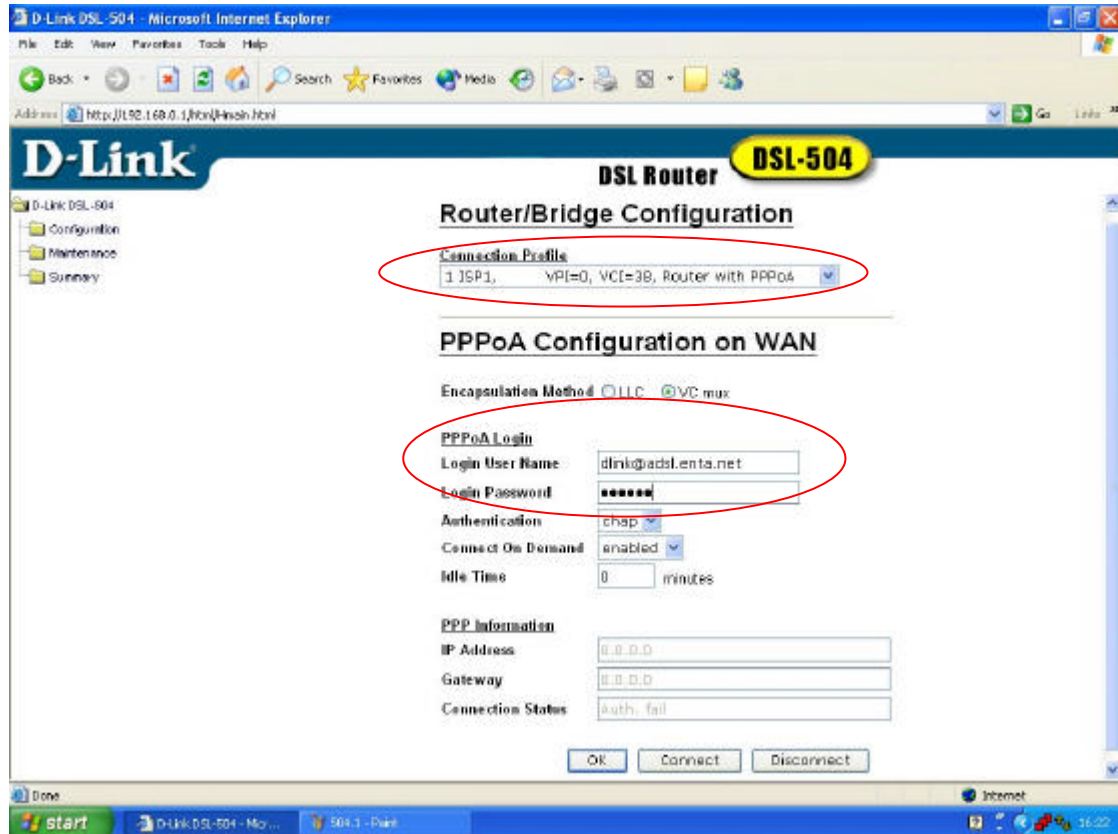


fig. 5

Check the correct profile is being displayed

1 ISP1, VPI=0, VCI=38, Router with PPPoA

Enter in your Username and Password under the PPPoA Login details.

Then click OK.

The Router will again ask you to save the changes and reboot, do so.

Step 6 Check Connection

Log back into the router, Once you log back in, you are back at the Router/Bridge Configuration page.

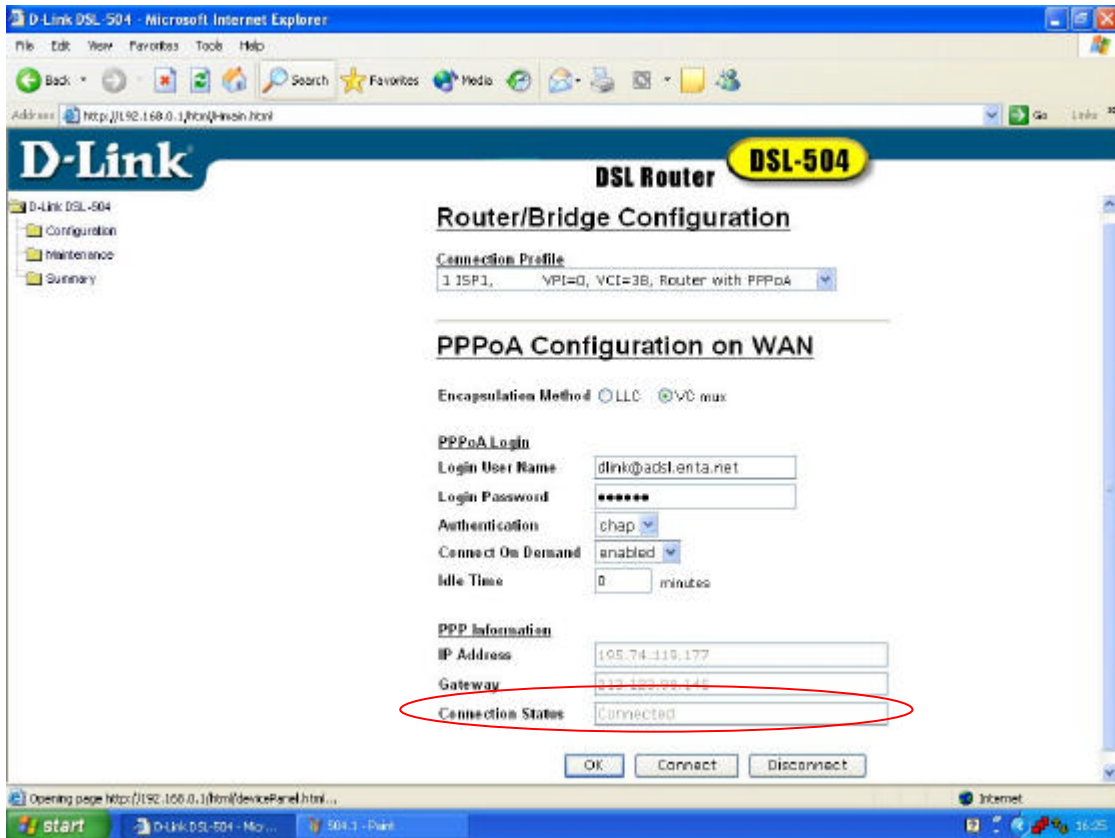


fig.6

This will show connection status as connected