

DSL-100D Installation Guide

Model: DSL-100D PCI ADSL Modem
Driver Version: dslhamgm.inf 29/12/00 dslhw9x.inf 29/12/00
OS Supported: Windows 95, Windows 98, Windows 98SE, Windows Me, Windows NT 4.0 and Windows 2000.

Installation

To install the DSL-100D, please unzip the drivers onto the hard disk first, the NIC must be inserted in a empty 2.1 or 2.2 PCI slot. Once the PCI card is installed boot up the OS. There are separate drivers for Windows 95/98/98SE, Windows Me and Windows NT 4.0/2000 and the configuration procedure is the same for all the operating systems.

Once the Windows 2000 is booted the New Hardware Wizard will discover the device.

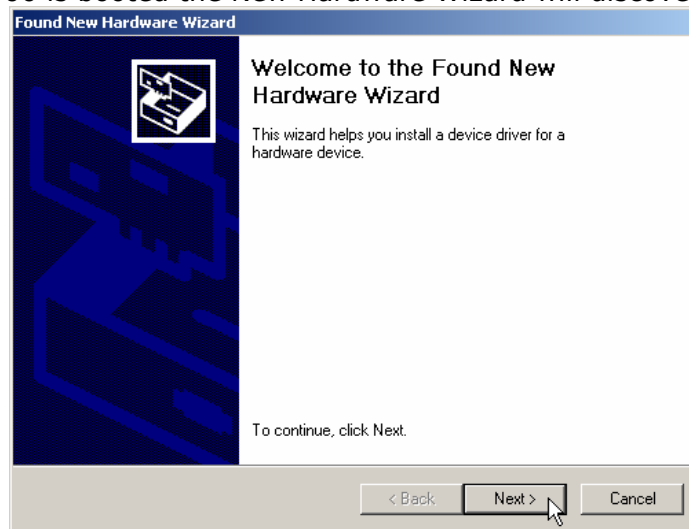


Fig.1 New Hardware Wizard

Please notice the device is found as a Network Controller, this is normal.

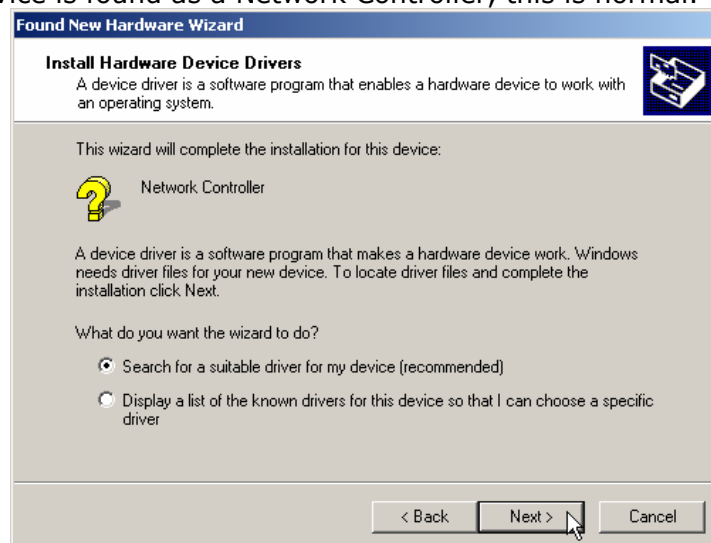


Fig.2 Network Controller

Chose the option "Specify a Location".



Fig.3 Specify Driver Files

Please browse the path for the driver location on the hard disk or where you have extracted the zip.

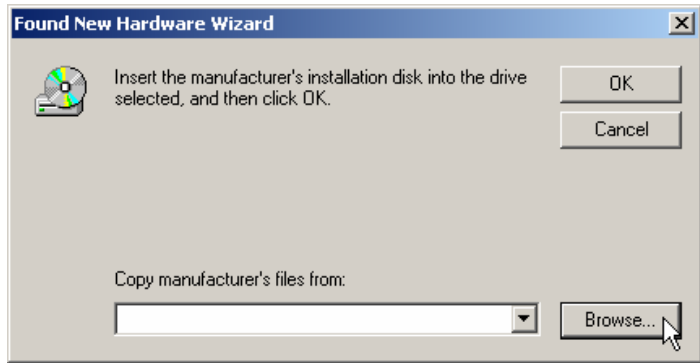


Fig.4 Driver location

Please select the netamgm.inf file

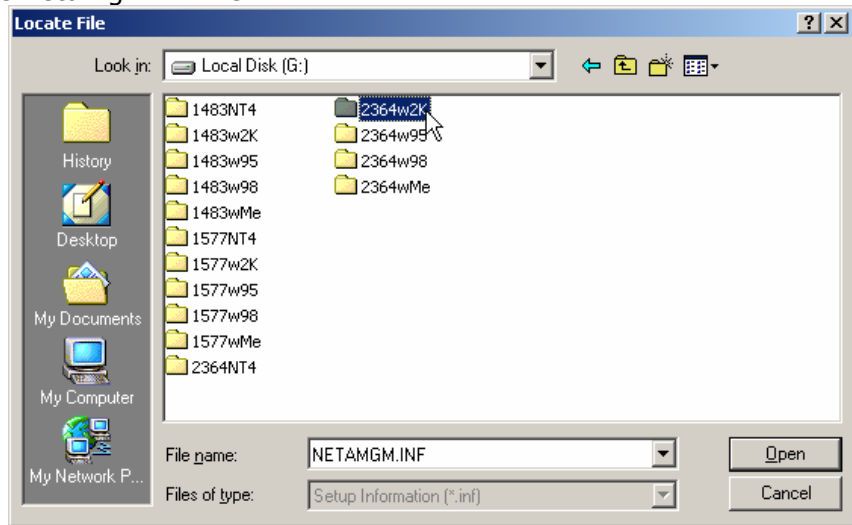


Fig.5 Locate File

The operating system will automatically select the correct INF file.

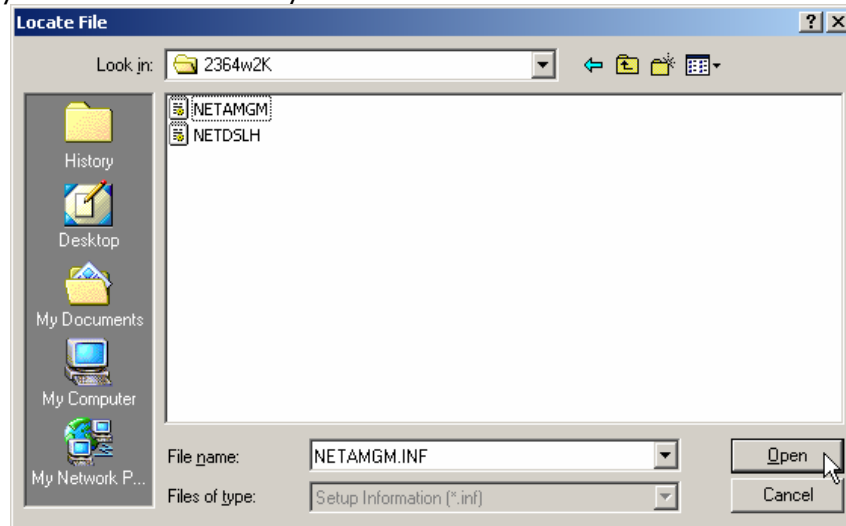


Fig.6 File selection

The location confirms if the driver location.

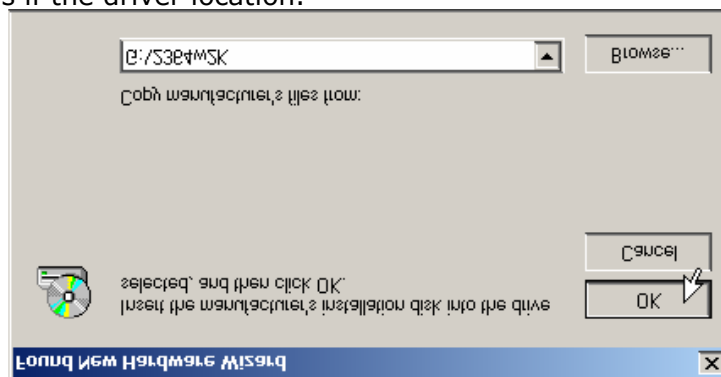


Fig.7 Confirm location

The OS confirms the product loaded.

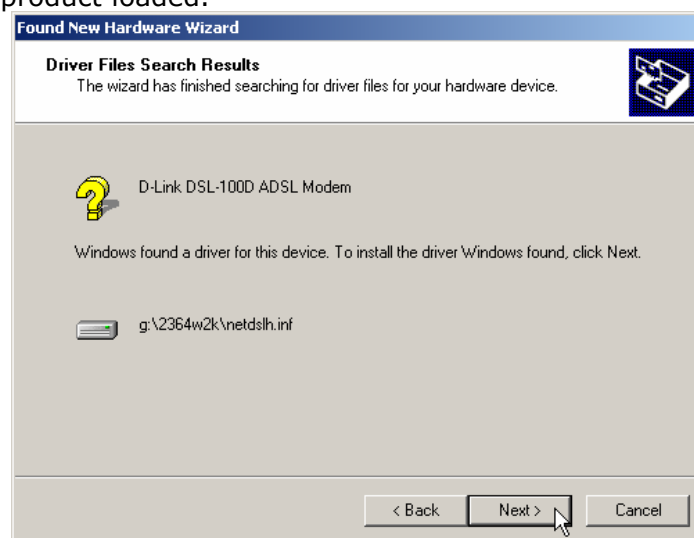


Fig.8 Drivers are confirmed

The OS states that there is no digital signature, please continue.



Fig.9 Digital Signature

The wizard has finish please restart your PC.

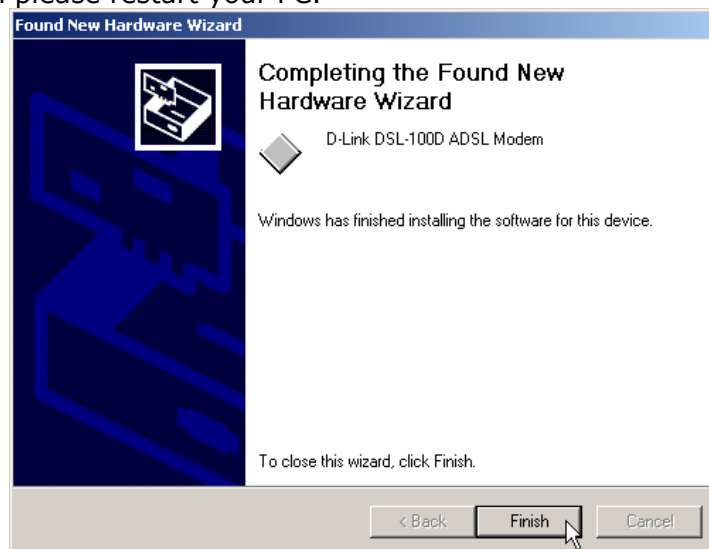


Fig.10 Wizard completed

Configuration Utility

The following screenshots are for the DSL-100D DSL configuration. Which is the same for all the Operating Systems that the DSL-100D supports. The service in the United Kingdom is currently only provided by BT via various vendors to business and end-users.

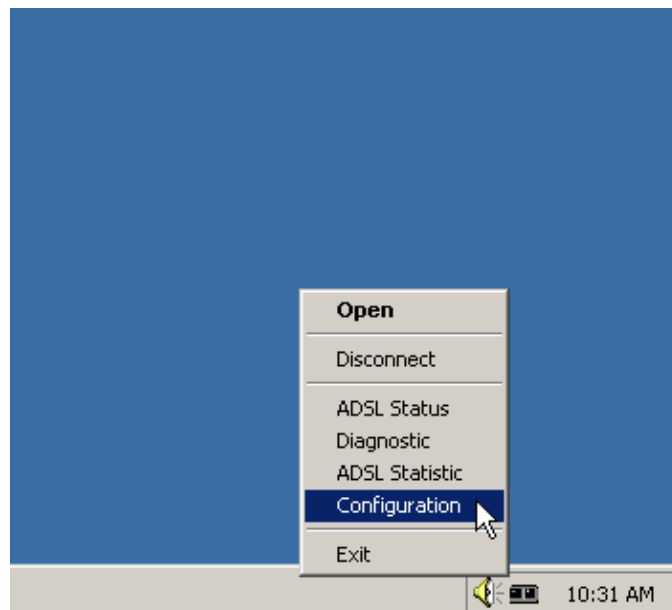


Fig.11 DSL Configuration

For BT Openworld the ADSL mode should be ANSI T1.413 Issue 2 only.

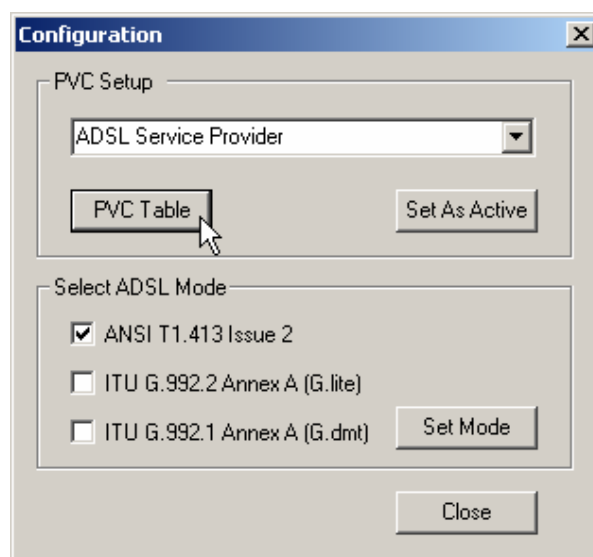


Fig.12 Main Menu

The Private Virtual Channel (PVC) entry is required for the ATM link with the PPPoA protocol set.

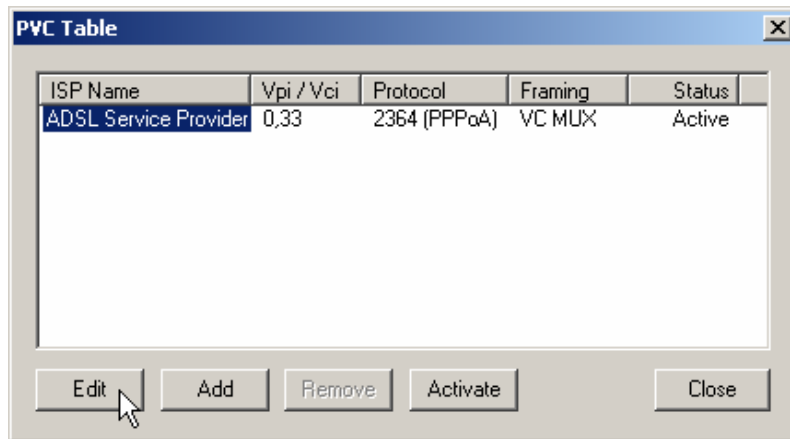


Fig.13 PVC Table

For the United Kingdom with BT please enter the following details, other countries please check with your ISP or local D-Link office for the particular settings.

ISP Name; Name your DSL ISP

Virtual Path Identifier (VPI): set to 0

Virtual Channel Identifier (VCI): set to 38

Protocol Framing: set to VC MUX

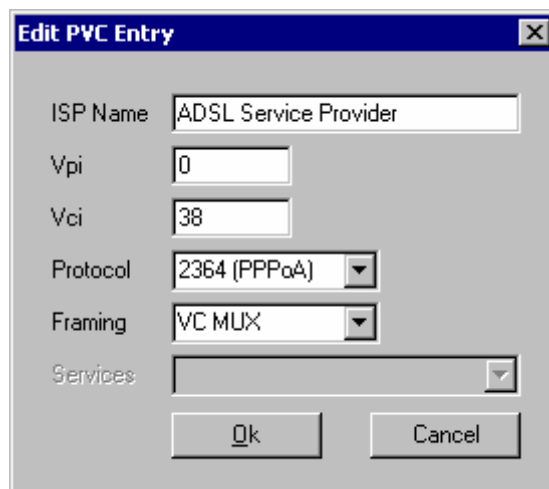


Fig.14

After the DSL-100D has been installed, please double-click on the "D-Link DSL-100D ADSL Connection" Icon that is located in the "Network and Dial-up Connections" This will allow you to start the logon for the DSL ISP.

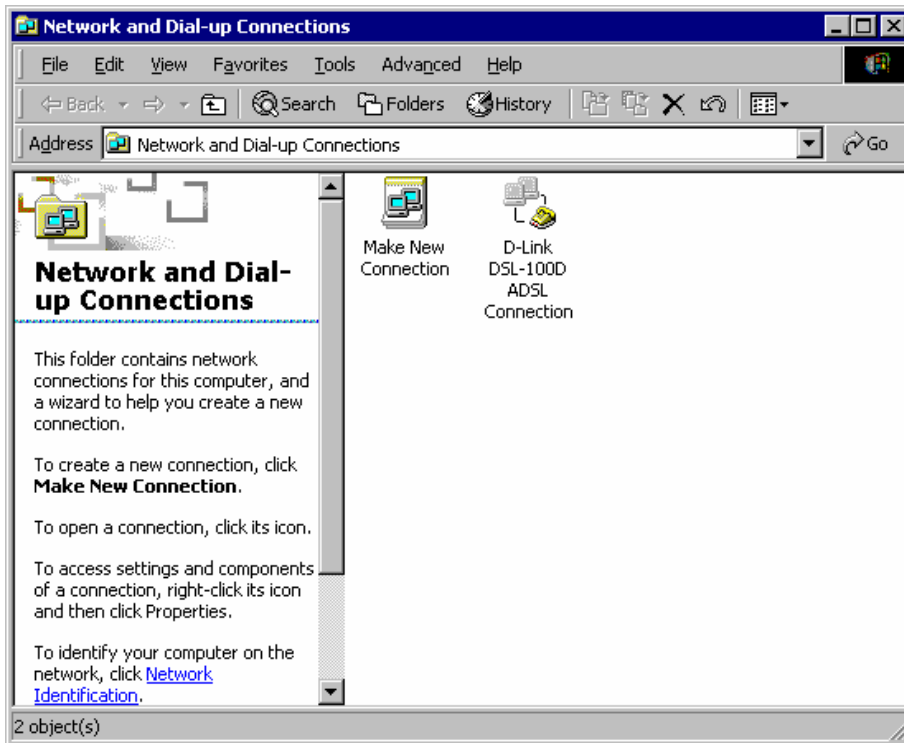


Fig.15 Network and Dial-up Connections

Please enter the user details for you account.



Fig.16 Connection Wizard

Once you have successfully connect the connection status will show the connection speed and activity.

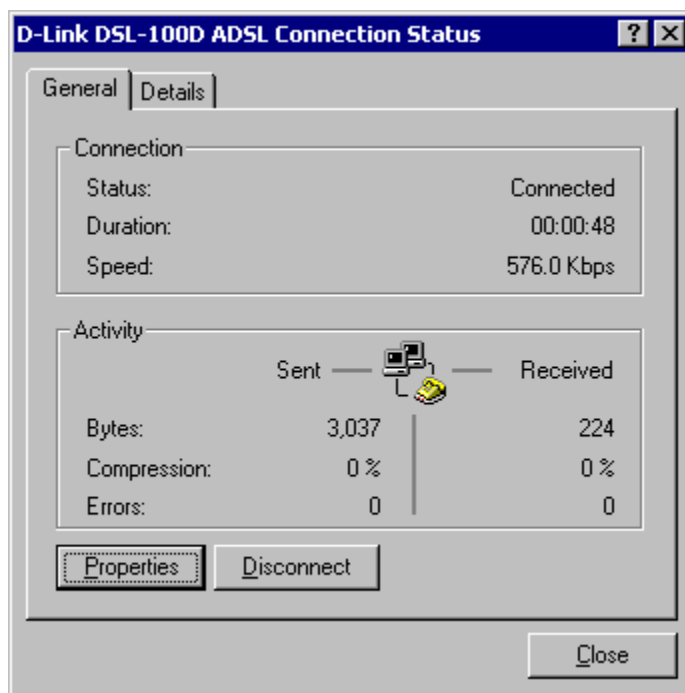


Fig.17 Connection Status

~End of Document~