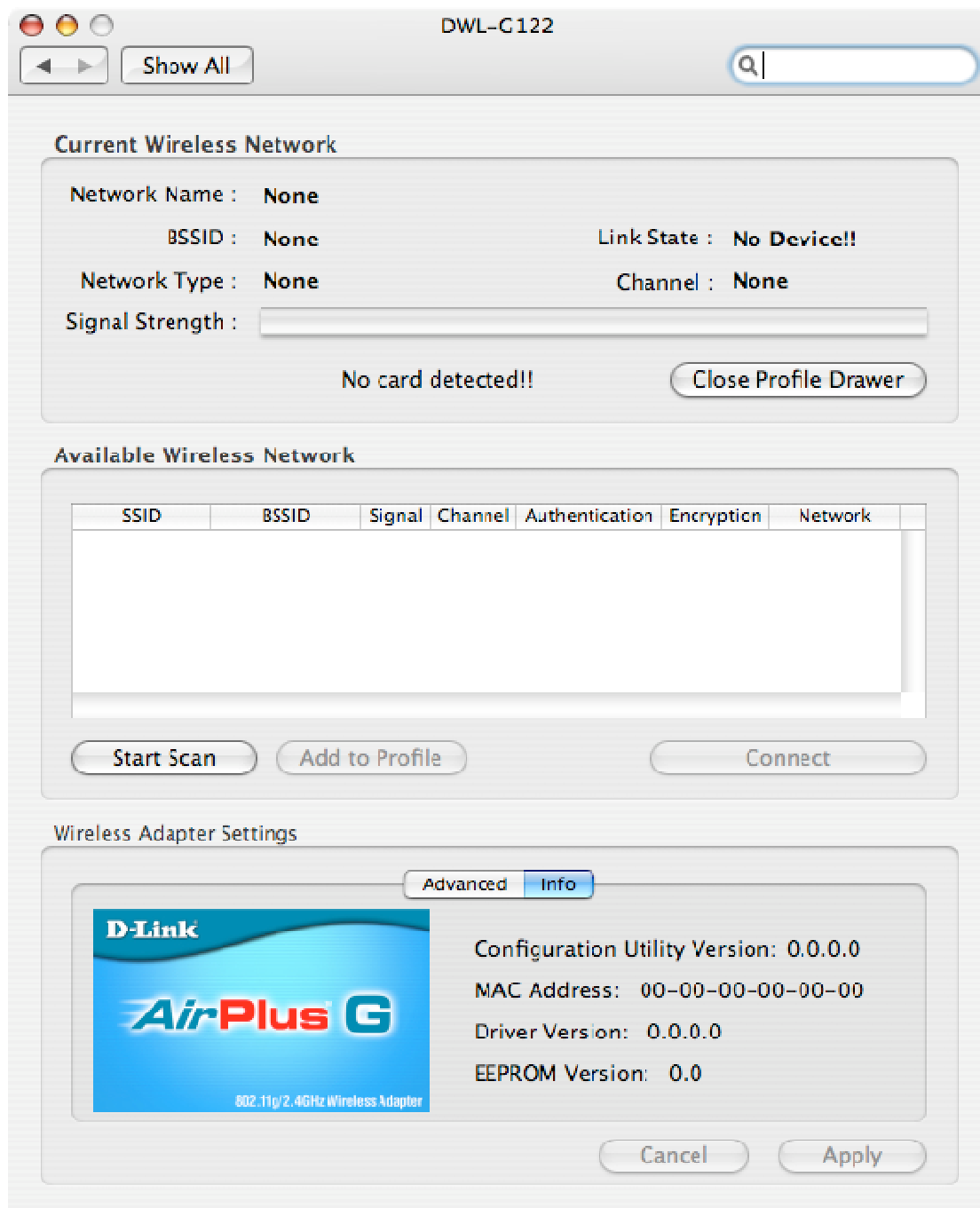


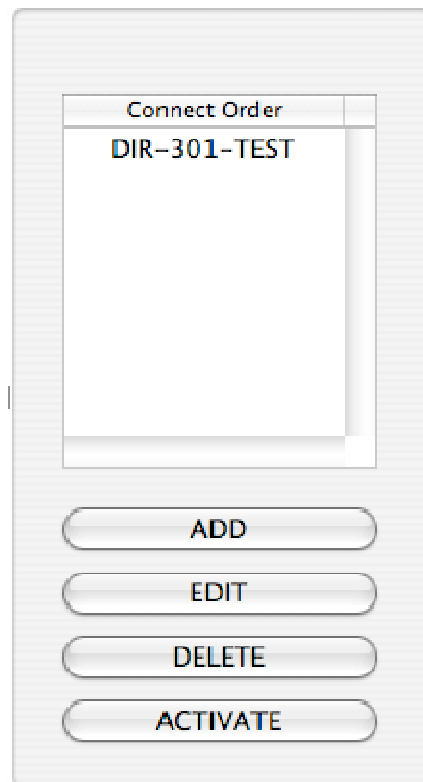
Mac OS X – DWL-G122 Wireless setup

Please refer to Mac OS X wireless setup document for instructions on how to access DWL-G122 setup. Note that the screenshots below were taken without a DWL-G122 unit plugged in to the Mac; the utility will show details of the wireless network it is currently connected to otherwise.

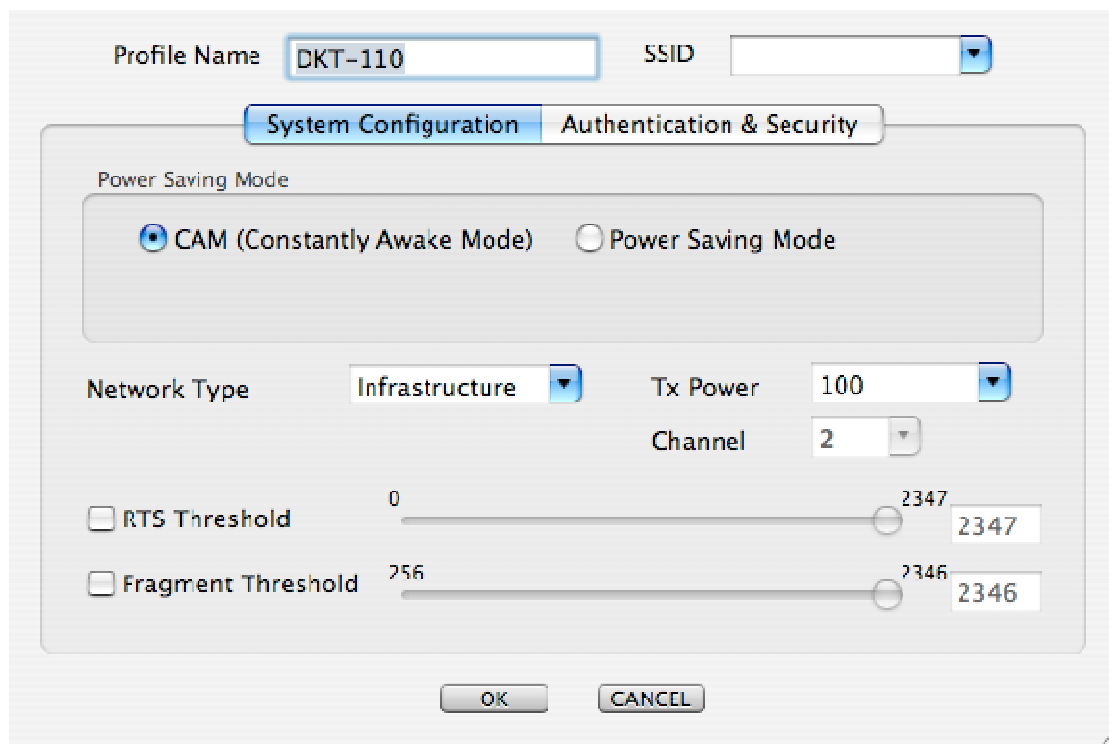
The main setup screen is shown below. After performing a scan, the list of available wireless networks will be populated with all networks found in range. The best way to configure settings for these is to select one, then click on "Add to Profile" and open the Profile Drawer.



The profile drawer simply lists all networks it currently has settings stored for. To edit settings, highlight the one you want and click on EDIT; to connect, click on ACTIVATE.



Clicking on EDIT will bring up the following screens:



It is rarely necessary to change the settings under "System Configuration", as these should be detected when performing a site survey. The "Authentication & Security" tab is more relevant, as this is where security settings for secure networks are entered.

The image shows a network configuration dialog box with the following fields and options:

- Profile Name: DKT-110
- SSID: [Empty]
- System Configuration | **Authentication & Security**
- Authentication Type: Open
- Encryption Type: NONE
- WPA Pre-Shared Key: 12345678
- Box:
 - Key#1 Hexadecimal [Empty]
 - Key#2 Hexadecimal [Empty]
 - Key#3 Hexadecimal [Empty]
 - Key#4 Hexadecimal [Empty]
- Buttons: OK, CANCEL