

D-Link Quick Installation Guide

This product works with the following operating system software: **Windows XP, Windows 2000, Windows Me, Windows 98se**



DWL-120
2.4GHz USB
Wireless Adapter

Before You Begin

You must have at least the following:

- You will need a computer with an available USB port to connect the DWL-120 Wireless USB adapter.
- At least a 300 MHz processor and 32 MB of memory
- An 802.11b Access Point (for Infrastructure Mode) or another 802.11b wireless adapter (for Ad-Hoc; Peer-to-Peer networking mode.)

Check Your Package Contents

These are the items included with your DWL-120 purchase:



DWL-120 Wireless USB Adapter



CD-ROM (containing Drivers, Manual and Warranty)



Mini-USB Cable

If any of the above items are missing, please contact your reseller.

1 Insert the D-Link CD-ROM Into Your Computer

Turn on the computer and Insert the D-Link Air DWL-120 Driver CD in the CD-ROM drive.

The step-by-step instructions that follow are shown in Windows XP. The steps and screens are similar for the other Windows operating systems



Do **NOT** install the DWL-120 PCI Adapter into your computer before installing the driver software on the D-Link CD!

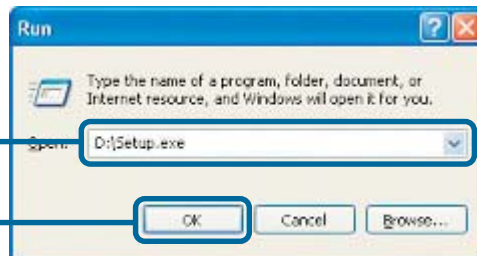
The Install Screen will appear.


Click **Install Driver/PC Utility**



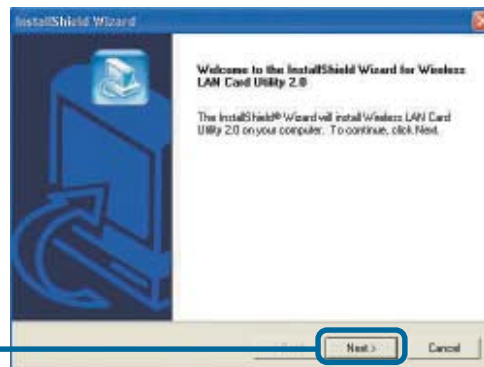
If the CD Autorun function does not automatically start on your computer, type "D:\Setup.exe." If it does start, proceed to the next screen.

Type **"D:\Setup.exe."**



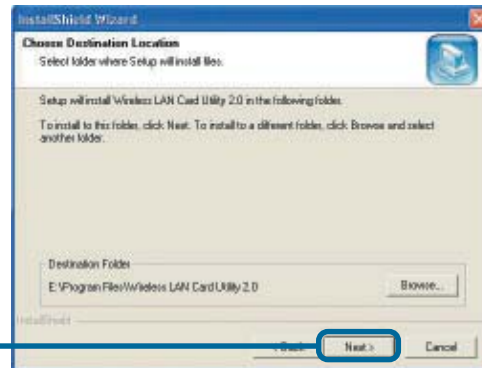
 The letter **"D"** represents the letter of the CD-ROM drive. Your CD-ROM drive may be a different drive letter.

Click **OK**



Click **Next**

Click **Next**



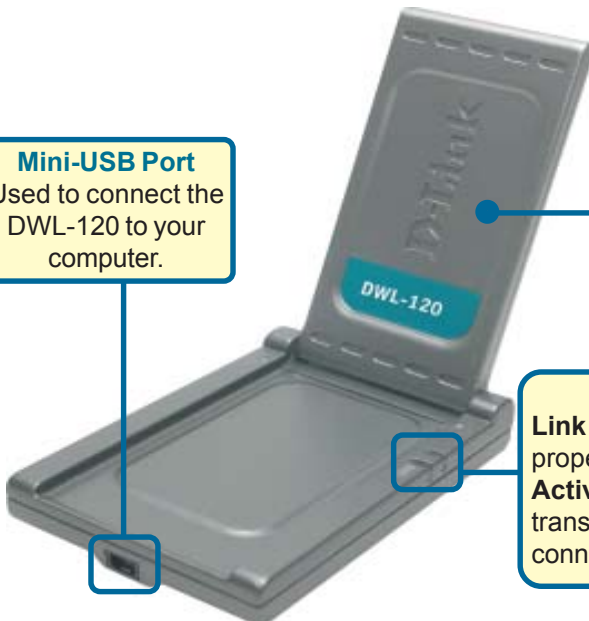
Click **No, I will restart my computer later**



Click **Finish**

Shut down your computer

Mini-USB Port
Used to connect the DWL-120 to your computer.



Antenna
Used to wirelessly connect to 802.11b networks.

Link/Activity LED
Link - Indicates that the DWL-120 is properly installed in the computer.
Activity - blinks when data is being transmitted through the wireless connection.

2 Installing the DWL-120 Wireless USB Adapter to Your Computer

A. Make sure to turn off your computer.



B. Install the DWL-120, firmly insert one end of the USB cable (larger plug) into your computer's USB Port.



C. Firmly insert the other end of the USB cable (smaller plug) into the DWL-120.

3 Restart Your Computer


When you restart your computer this **Found New Hardware Wizard (Windows XP)** screen will appear:

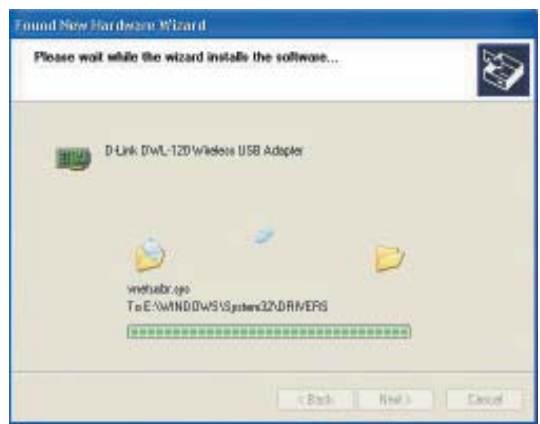
Select **Install the software automatically (Recommended)**

Click **Next**




Windows XP will automatically load the driver files.

 The Windows XP drivers are Microsoft WHQL (Windows Hardware Quality Labs) Certified.



Click Finish



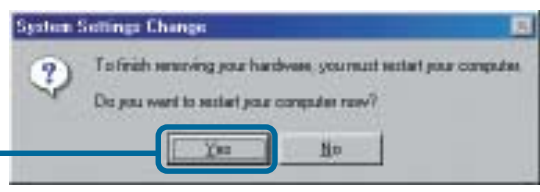
 For Windows 2000, this Digital Signature Not Found screen may appear during the installation.

Click Yes to continue the installation



For Windows Me and 98, this screen may appear.

Click Yes to finalize the installation

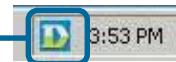


4

Your Installation is Complete!

After you've continued in Windows XP (or after the computer restarts in the other Windows operating systems), the D-Link *Air* DWL-120 **Configuration Utility** will automatically start and the utility icon will appear in the bottom right hand corner of the desktop screen (systray). **If this icon appears GREEN, then you have successfully installed the DWL-120, are connected to a wireless network and are ready to communicate!**

Double-click the **utility icon** to use the configuration utility.



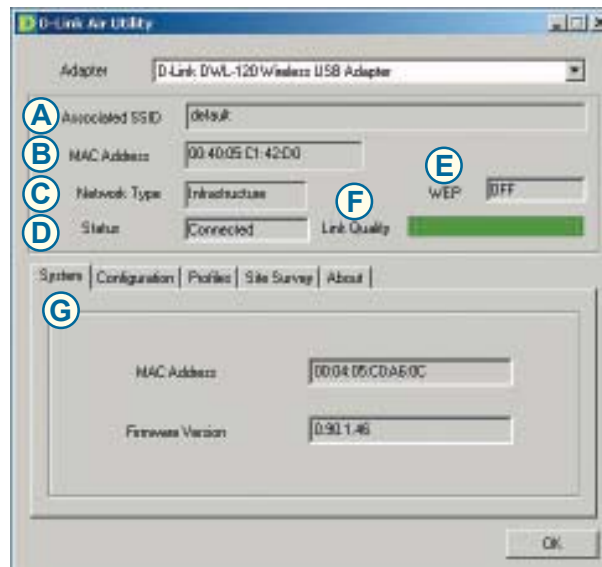
Appendix Using the Configuration Utility

A. Associated SSID: The Service Set Identifier is the name assigned to the wireless network. The factory SSID setting is set to **default**

B. Mac Address: Displays the MAC Address of the Access Point that is associated with the DWL-120.

C. Network Type: The factory setting is set to **Infrastructure**. Ad-Hoc mode is used for peer-to-peer networking.

D. Status: Displays the current connection state of the DWL-120.



E. WEP: (Wireless Encryption Protocol) Displays encryption status.

F. Link Quality: Displays the wireless signal strength for the DWL-120 wireless connection to the access point.

G. System: Displays the MAC Address and Firmware version for the DWL-120.

H. Network Type:

The factory setting is set to **Infrastructure**. Ad-Hoc mode is used for peer-to-peer networking.

I. SSID: The Service Set Identifier is the name assigned to the wireless network. The factory SSID setting is set to **default**. Make changes here to match the SSID on existing Wireless Router or Access Point.

J. TxRate: You can adjust the transmission rate to get the best signal possible depending on your usage and your environment.



K. Default Settings:

Reverts the DWL-120 back to its factory default settings.

L. WEP Settings:

Will allow you to configure the Encryption for your DWL-120. By default WEP is disabled.

M. Advanced Settings:

To configure advanced settings for Power, RTS and Fragmentation Threshold.

IP Address Configuration

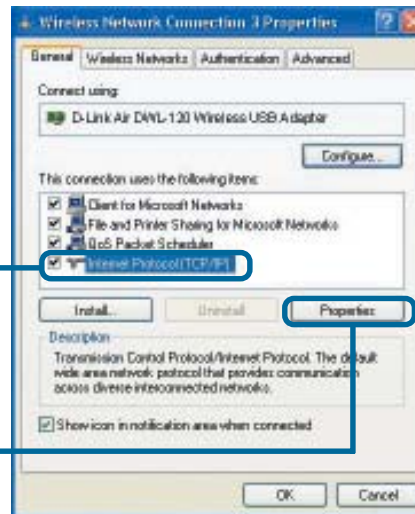
To connect to a network, make sure the proper network settings are configured for DWL-120.

For Microsoft Windows XP:

Go to **Start > right click on My Network Places > select Properties > Double-click on the Network Connection associated with the DWL-120.**

Click **Internet Protocol (TCP/IP)**

Click **Properties**



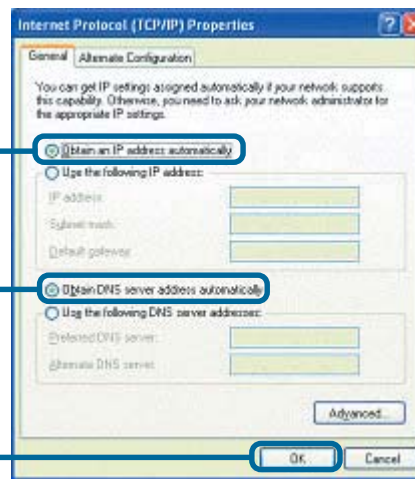
Dynamic IP address setup

Used when a **DHCP server** is available on the local network. (i.e. Router)

Select **Obtain an IP address automatically** (if the Wireless Router or Access Point has DHCP server enabled)

Select **Obtain DNS server address automatically**

Click **OK**



Static IP address setup

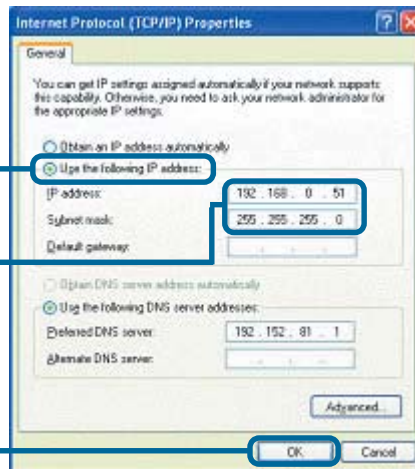
Used when a **DHCP server** is not available on the local network.

Select **Use the following IP address**

IP address: **192.168.0.51**
Subnet mask: **255.255.255.0**

Input a static IP address in the same range as the Wireless Router or Access Point.

Click **OK**

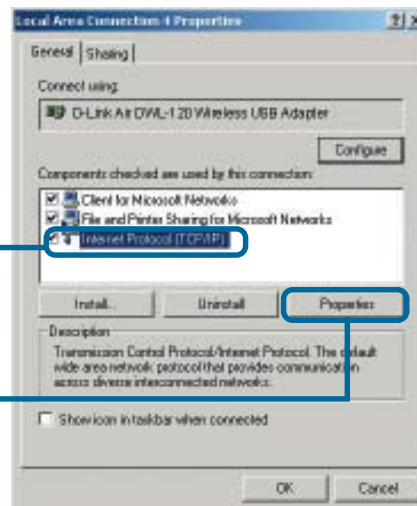


For Windows 2000 users:

Go to **Start > Settings > Network and Dial-up Connections** > Double-click on the **Local Area Connection** associated with the DWL-120 > select **Properties**

Click **Internet Protocol (TCP/IP)**

Click **Properties**



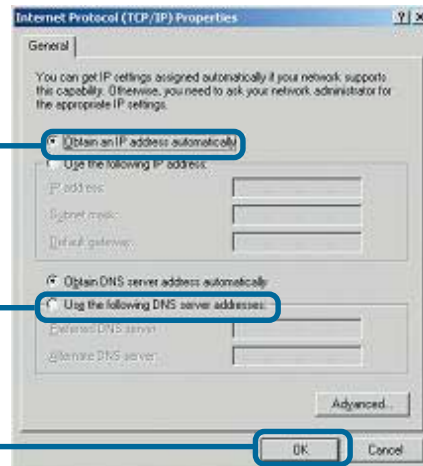
Dynamic IP address setup

Used when a **DHCP server** is available on the local network. (i.e. Router)

Select **Obtain an IP address automatically** (if the Wireless Router or Access Point has DHCP server enabled)

Select **Obtain DNS server address automatically**

Click **OK**



Static IP address setup

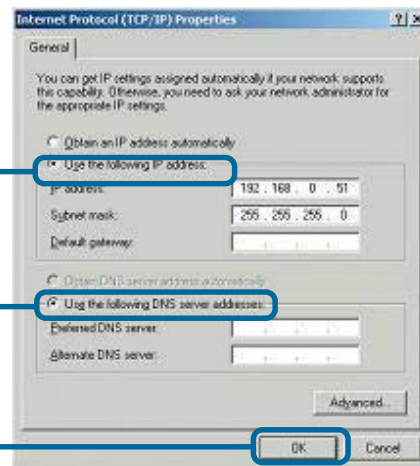
Used when a **DHCP server** is not available on the local network.

Select **Use the following IP address**

IP address: 192.168.0.51
Subnet mask: 255.255.255.0

Input a static IP address in the same range as the Wireless Router or Access Point.

Click **OK**



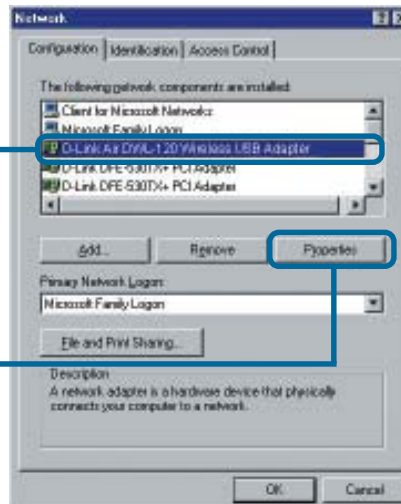
For Windows Me and 98se users:

Click **Internet Protocol (TCP/IP)**

Go to **Start > Settings > Control Panel** > Double-click on the **Local Area Connection** associated with the DWL-120 > select **Properties**

Click **Internet Protocol (TCP/IP)**

Click **Properties**



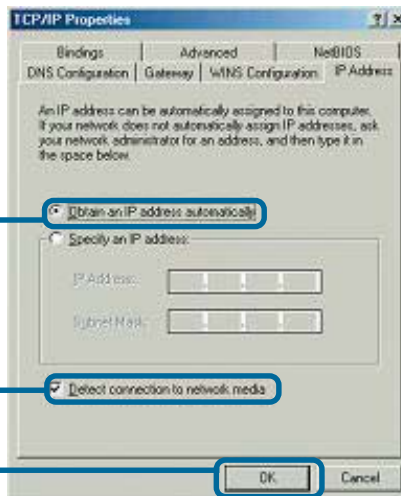
Dynamic IP address setup

Used when a **DHCP server** is available on the local network. (i.e. Router)

Select **Obtain an IP address automatically** (if the Wireless Router or Access Point has DHCP server enabled)

Select **Detect connection to network media**

Click **OK**



Static IP address setup

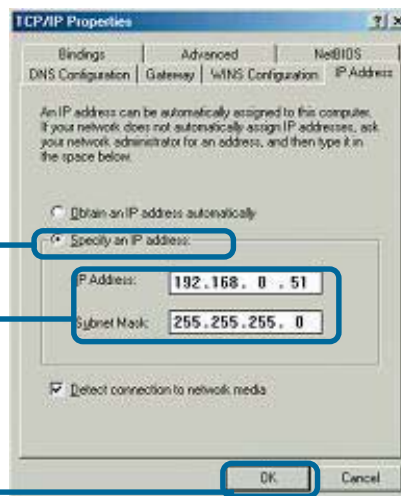
Used when a **DHCP server** is not available on the local network.

Select **Use the following IP address**

IP address: **192.168.0.51**
Subnet mask: **255.255.255.0**

Input a static IP address in the same range as the Wireless Router or Access Point.

Click **OK**



Notes

Technical Support

You can find the most recent software and user documentation on the **D-Link** website.

D-Link provides free technical support for customers within the United States for the duration of the warranty period on this product.

U.S. customers can contact **D-Link** technical support through our web site or by phone.

D-Link Technical Support over the Telephone:

(877) 453-5465

24 hours a day, seven days a week

D-Link Technical Support over the Internet:

<http://support.dlink.com>

email: support@dlink.com

