



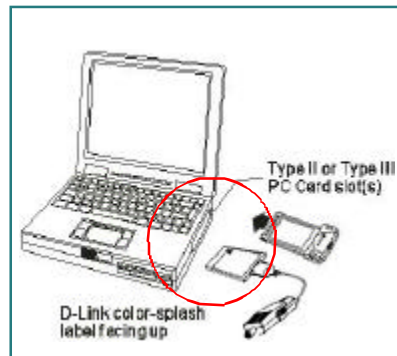
## Quick Install Guide for Windows 98/SE DFE-680TX/TXD 10/100 Ethernet PC Card

Please note that you will need Cat5, RJ-45 cable to complete your network installation. Please see Appendix B for more information regarding cables.

### 1 Inserting the DFE-680TX/TXD 10/100 Ethernet PC Card into your laptop.

With the laptop turned **ON**, insert the DFE-680TX/TXD 10/100 Ethernet PC Card into your laptop.

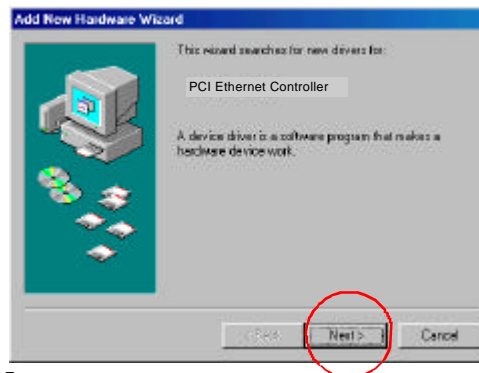
Gently insert the front end (with the yellow arrow on the card pointing toward the computer) of the PC Card all the way into the PCMCIA slot on your laptop, until it is firmly seated.



### 2 Running the Add New Hardware Wizard

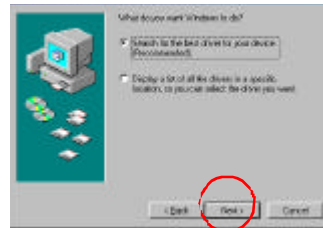
Windows will automatically detect new hardware and begin searching for drivers.

Click Next.



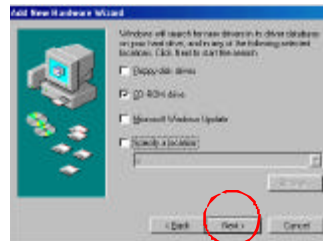
## 2 Running the Add New Hardware Wizard *continued*

At the next screen, select Search for the best driver for your device.



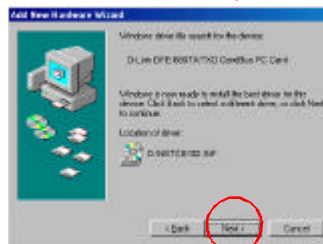
**Click Next** to continue the installation.

At the following screen, choose CD-ROM drive. Insert the CD that is included with your PC Card.



**Click Next.**

The Hardware Wizard will find the driver for your PC Card.



**Click Next,** to continue.

If prompted for the Windows 98 CD, insert the Windows 98 CD into the CD-ROM drive.



**Click OK.**

Specify the correct location in the Copy files from: box. If the CD-ROM drive is the **D:** drive, then type **D:\Win98** in the box.



*(Some computers will have the Windows98 files available in the C:\Windows\options\cabs directory.)*

After typing in the location,

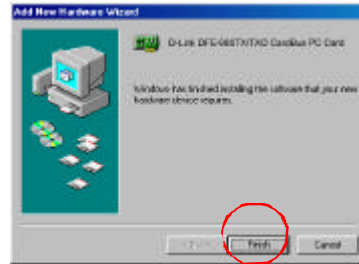
**Click OK.**

Windows will copy the necessary files.

## 2 Running the Add New Hardware Wizard *continued*

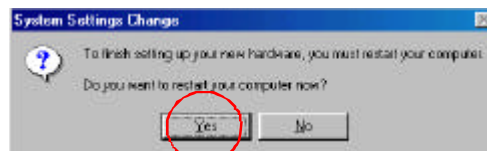
To complete the installation,

**Click Finish.**



At the following screen,

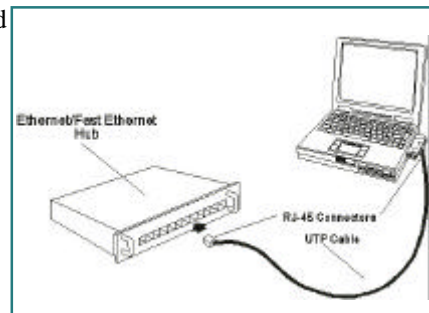
**Click Yes** to restart the computer.



## 3 Connecting to your network

After the Hardware Wizard has completed the installation of the DFE-680TX/TXD, you can now make your network connection.

Please insert one end of the RJ-45 plug into the opening in the DFE-680TX/TXD Ethernet PC Card, and then insert the other end of the RJ-45 cable into your networking hub or switch.



You are now networked!

*Please see **Appendix A** to check for proper installation of your DFE-680TX/TXD using the Device Manager. Please see **Appendix B** for more information on types and lengths of cable that can be used to connect your network.*

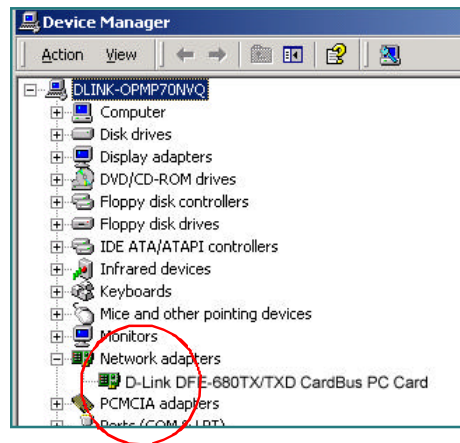
*Note: For more information on alternate networking possibilities, please see the **Networking Basics** and the **Getting Started** sections of the User's Manual.*

For instructions on configuration, please see your User's Manual.

## APPENDIX

### A

To check for the proper installation of your DFE-680TX/TXD, please click on **START > SETTINGS > CONTROL PANEL**, double click on the **SYSTEM** icon. At the **SYSTEM PROPERTIES** window, click on the **DEVICE MANAGER** tab. Your **DFE-680TX/TXD** will appear under **NETWORK ADAPTERS**, as shown.



## APPENDIX

### B

#### Connecting Your Network Cable

Category 5 UTP cable can be used for both **Fast Ethernet** cabling and for **traditional Ethernet** cabling.

#### Connecting for Fast Ethernet cabling

Cat5 cable is required for Fast Ethernet operation. The maximum cable length between the DFE-680TX/TXD and the supporting hub is 300 ft. The cable must be straight (not a crossover cable), with an RJ-45 plug at each end.

#### Connecting for traditional (10Mbps) Ethernet cabling

Category 3, Category 4, and Category 5 UTP cable, as well as EIA/TIA-568 100-ohm STP cable, all qualify under traditional Ethernet cabling rules. The maximum cable run between the DFE-680TX/TXD and the supporting hub is 300 ft. The cable must be straight (not a crossover cable) with an RJ-45 plug at each end.

