



## POWERLINE HD 4-PORT STARTER KIT

### **BROADBAND SPEED OVER ELECTRICAL WIRING**

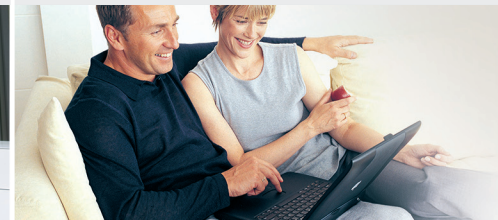
Offers up to 200Mbps over home electrical wiring for high-bandwidth Internet applications

### **QUALITY OF SERVICE**

Prioritized traffic for smooth streaming multimedia, online games, and VoIP calls

### **SECURITY MADE EASY**

Data encryption to prevent unauthorized network access and simple Network ID configuration at the push of a button



### **DATA TRANSMISSION OVER ELECTRICAL WIRING**

The D-Link DHP-343 Powerline HD 4-Port Starter Kit uses your home's existing electrical wiring to create a network or extend your existing network<sup>1</sup>. Every contiguous power outlet becomes a potential network port for easily connecting digital media devices, game consoles, print servers, computers and network storage devices throughout your home.

### **IDEAL FOR BANDWIDTH INTENSIVE APPLICATIONS**

The DHP-343 is capable of delivering data transfer rates of up to 200Mbps<sup>2</sup>. This rapid transmission speed is suitable for bandwidth-intensive applications such as HD video streaming, VoIP calls, and lag-free online gaming experiences. In addition, the DHP-343's Quality of Service (QoS) technology prioritizes Internet traffic, ensuring that multimedia applications will not experience performance degradation while web surfing and file downloads are in progress.

### **CONVENIENT CONNECTION AND SECURE OPERATION**

D-Link's Powerline 4-Port HD Starter Kit plugs directly into a wall outlet. Four LAN ports allow you to connect multiple Ethernet devices and network them with other powerline adapters throughout the home. The network ID on the device can be quickly and conveniently configured at the push of a button. 3DES data encryption protects the powerline network from intruder wire-tapping.

### **POWER SAVING FEATURES**

The DHP-343 implements a power saving mode to help conserve energy. If no data transmission or reception occurs over a specified period of time, the adapter will automatically go into sleep mode to save power. The built-in 4 port switch also helps to save energy by eliminating the need for an additional network hub/switch.

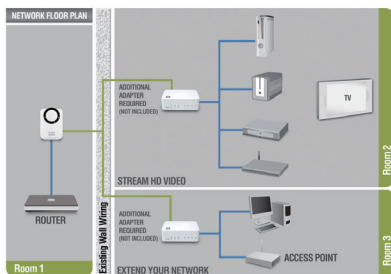
### WHAT THIS PRODUCT DOES

The DHP-343 PowerLine 4-Port HD Starter Kit gives you everything you need to connect computers, digital media players, game consoles and other Ethernet-enabled devices in a network via your home's existing electrical wiring. Simply plug in both the one-port adapter and the switch to power outlets in your house and you're ready to connect your Ethernet-enabled devices.

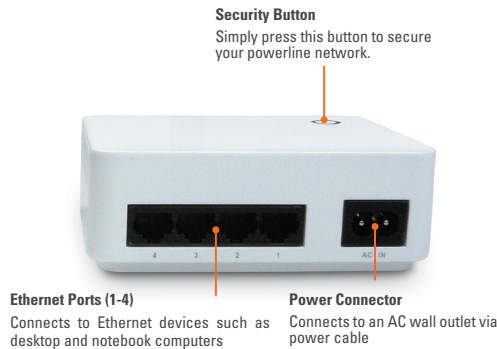
### FAST TRANSMISSION OVER POWER LINES THROUGHOUT THE HOME

D-Link's Powerline HD Starter Kit delivers up to 200Mbps over the pre-existing electrical wiring in a building. This fast transmission speed provides ample bandwidth suitable for streaming high-quality video HDTV signals, while simultaneously providing high-speed Internet access throughout an entire home. Using Quality of Service (QoS) technology, this adapter is able to ensure that low-priority traffic does not interfere with bandwidth-sensitive applications such as VoIP phone calls and online games.

### YOUR NETWORK SETUP



\*A minimum of two D-Link PowerLine HD Network Adapters are required to create a network.



DHP-342



DHP-302

## TECHNICAL SPECIFICATIONS

#### MINIMUM SYSTEM REQUIREMENTS

- (For PC Utility Software)
- PC with 200MHz processor
  - 64MB memory
  - Windows Vista, XP SP2 or 2000 SP4
  - Ethernet interface (100Mbps)

#### STANDARDS

- IEEE 802.3
- IEEE 802.3u

#### POWERLINE INTERFACE

- DHP-342: Power cable (country-dependent)
- DHP-302: Power prongs (country-dependent)

#### ETHERNET INTERFACE

- DHP-342: Four (4) 10/100BASE-TX Ethernet Ports with auto MDI/MDIX
- DHP-302: 10/100BASE-TX Ethernet Port with auto MDI/MDIX
- RJ-45 Connector

#### POWERLINE MODULATION SCHEME

- OFDM Symbol Modulation

#### POWERLINE FREQUENCY BAND

- 2MHz to 32MHz

#### DATA RATE

- Powerline: 200Mbps (PHY rate)
- Ethernet: 10/100Mbps (auto-negotiation)

#### QoS

- 802.1P Priority Queues standard

#### SECURITY

- 3DES data encryption
- Net ID

#### LEDs

- Power
- AP
- Ethernet
- Throughput

#### POWER INPUT

- 100 to 240 VAC, 50/60Hz

#### POWER CONSUMPTION

- Power saving mode supported

#### DIMENSIONS (L x W x H)

- DHP-342: 120 x 90 x 43 mm
- DHP-302: 99 x 74 x 61 mm

#### WEIGHT

- DHP-342: 284 grams (0.63 lbs)
- DHP-302: 136 grams (0.3 lb)

#### OPERATING TEMPERATURE

- 0° to 40° C (30° to 104° F)

#### STORAGE TEMPERATURE

- 20° to 70° C (-4° to 158° F)

#### STORAGE HUMIDITY

- 10% to 95% non-condensing

#### EMC CERTIFICATION

- FCC Part 15 Class B
- CE Class B

#### SAFETY CERTIFICATION

- UL

<sup>1</sup> Power outlets and electrical wiring must all be part of the same electrical system. Certain electrical conditions in your home, such as wiring condition and configuration, may affect the performance of this product. Additional D-Link Powerline HD adapters required to add new devices to the network. A minimum of two D-Link Powerline HD adapters or switches are required to create a network. Connecting this product to a power strip with a surge protector may adversely affect the performance of this product. For best results, plug adapter directly into a wall outlet.

<sup>2</sup> Maximum throughput based on theoretical transmission PHY rate. Actual data throughput will vary. Network conditions and environmental factors, including volume of traffic and network overhead, may lower actual data throughput rate. Interference from devices that emit electrical noise, such as vacuum cleaners and hair dryers, may adversely affect the performance of this product. This product may interfere with devices such as lighting systems that have a dimmer switch or a touch-sensitive on/off feature, short wave radios, or other Powerline devices that do not follow the Universal Powerline Association (UPA) standard.



D-Link Corporation

No. 289 Xinhua 3rd Road, Neihu, Taipei 114, Taiwan  
Specifications are subject to change without notice.

D-Link is a registered trademark of D-Link Corporation and its overseas subsidiaries.  
All other trademarks belong to their respective owners.

©2009 D-Link Corporation. All rights reserved.  
Release 01 (July 2009)