

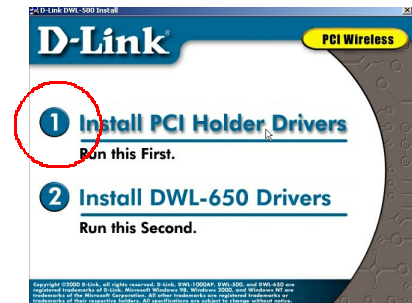
1

Installing the DWL-500 PCI Holder Drivers

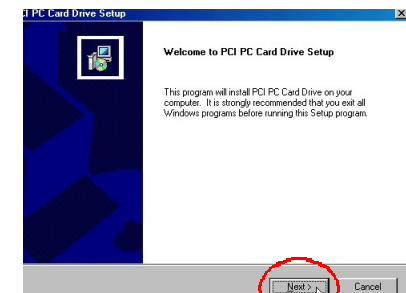
With the computer turned **ON**, insert the driver CD for the DWL-500 Wireless PCI Adapter into the CD-ROM.

The driver CD will automatically load.
Click on **“Install Drivers”**.

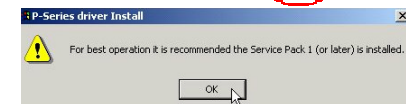
Click on **“Install PCI-Holder Drivers”**.



At the “Welcome” window,
Click **Next**.



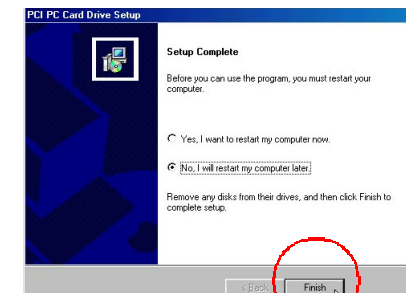
The next screen will be the license agreement,
Click **Yes** to accept.



If the following prompt appears,
Click **OK** to continue.

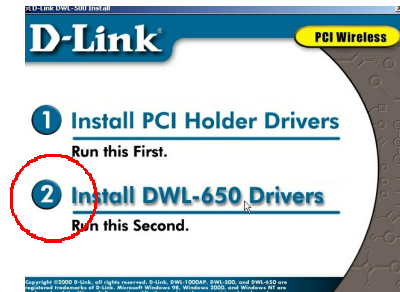
NOTE: *Apply the Service Pack after driver installation.*

Select **“No, I will restart my computer later”** at the next screen.
Click **Finish**.

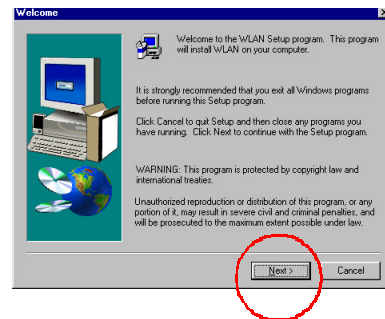


2 Installing the DWL-650 Drivers

From the initial screen,
Click on “Install DWL-650 Drivers”
to proceed with the installation.

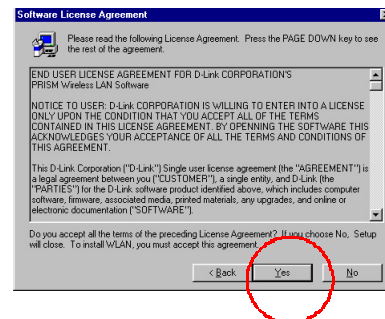


The following “Welcome” screen
will be displayed,
Click Next.



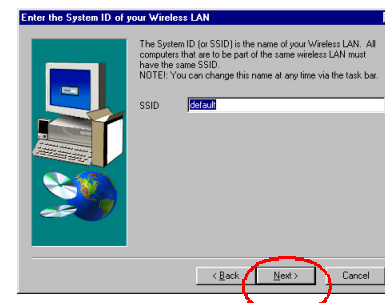
The next screen will be the license
agreement.

Click Yes.



The next screen will prompt for the System ID.
The word “default” will be displayed in the text
box.

Type in the desired name of the System ID in the
provided text box. The system ID needs to be
the same for all wireless network devices.
Click Next.

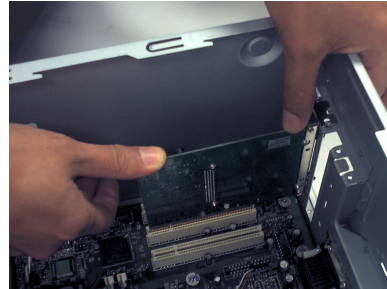


3

Installing the DWL-500 Wireless PCI CARD

Shut down the computer.

Insert the DWL-500 Wireless PCI Holder, without the PC CARD, into an available PCI slot in the computer. Secure the PCI Holder with a screw.



After the PCI Card Holder is secured, then insert the PCI Card, facing down as shown, into the PCI Card Holder. Press the PC Card firmly into the PCI holder.

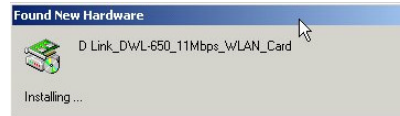


After the PC card is firmly seated, then **restart the computer.**

4

Finish Installation

Windows will recognize new hardware.



At the “Welcome” screen, **Click Next** to continue.



At the next screen, select **“Search for a suitable driver for my device”**.

Click Next to continue.

At the following window, select **“CD-ROM drives”**.

Click Next to continue.

At the next window,

Click Next to continue.

The following screen will only appear at the initial installation.

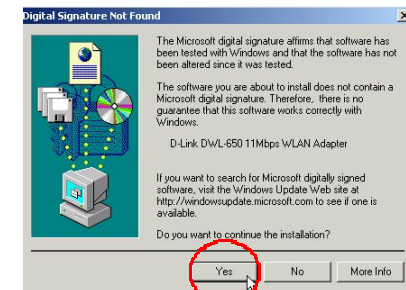
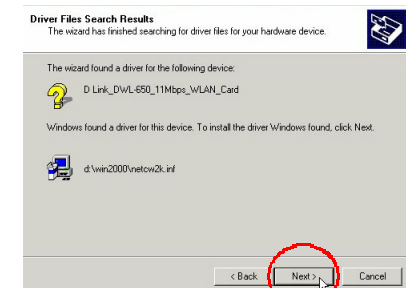
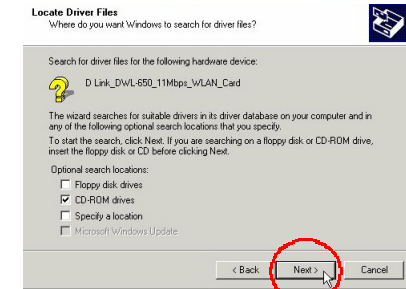
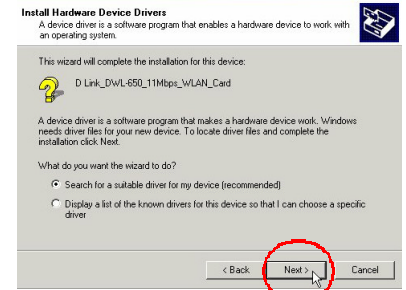
Click Yes to continue.

At the next window,

Click Finish.

Restart the computer to complete the installation.

To check that the wireless adapter is working, click on the configuration utility icon in the task bar. Make sure that there is a wireless connection under the “link info tab”.

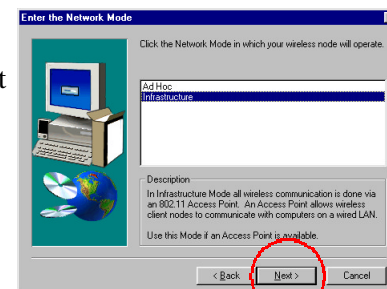


2

Installing the Drivers *continued*

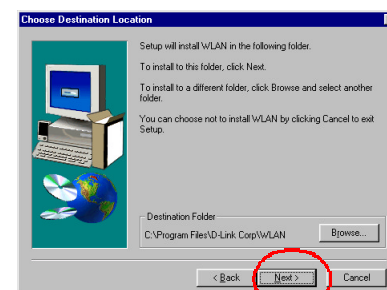
Select the Network Mode.

If you are connecting to an Access Point, select **“Infrastructure”**. Otherwise, if you are connecting directly to another wireless adapter without an Access Point, or Wireless Residential Gateway, then select **“Ad Hoc”**.
Click Next.



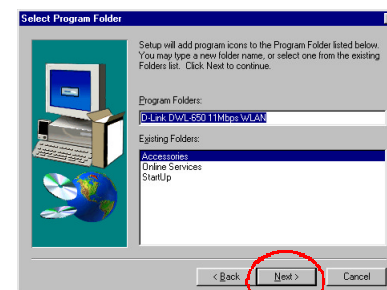
Windows will prompt for the destination folder.

Click Next to accept the selected folder. Otherwise, click Browse and select the desired folder.



The following screen will appear.

Click Next.



Windows will then copy files. After the files are loaded, Windows will prompt to restart the computer.

Select **“No, I will restart my computer.”**

Click Finish.

