

**D-Link®**

DSM-320RD



**medialounge™**  
Entertainment Network

# WIRELESS MEDIA PLAYER

WITH DVD AND CARD READER

Version 1.3

# Quick Install Guide

# Before You Begin

You will need the following:

- Windows® XP or 2000, 1GHz or above based computer with a minimum of 512MB RAM, a CD-ROM drive, 100MB of available hard drive space and a wireless or Ethernet network.

## Check Your Package Contents

These are the items included with your purchase:

If any of the below items are missing, please contact your reseller.



**DSM-320RD** Wireless Media Player with DVD and Card Reader



Installation CD (Contains D-Link® Media Server Software, Quick Installation Guide, and Manual)



Antenna



Ethernet (CAT 5 UTP/Straight Through) Cable



Standard Composite RCA Audio/Video Cable



S-Video Cable



Remote Control with 2 AAA Batteries

# 1

## Installing the D-Link® Media Server Software

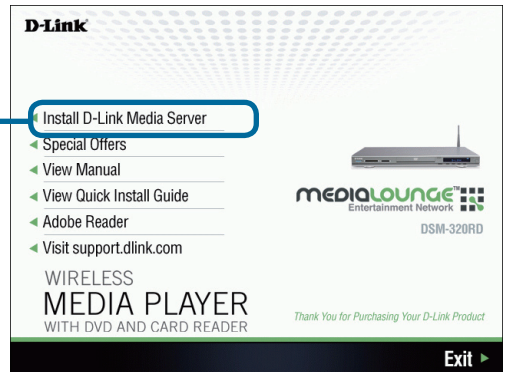
Install the D-Link® Media Server Software on each PC that contains audio, video, or photo files you wish to use with the DSM-320RD.

Follow the steps in this section to install the software.

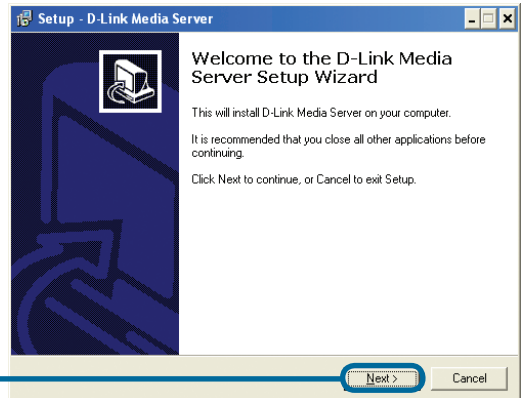
Insert the **DSM-320RD CD-ROM** into the CD-ROM drive and the following screen will appear.

Click on **Install D-Link® Media Server**

If the screen on the right does not appear, go to **My Computer** and double-click on the **CD-ROM drive**. The screen at right will appear.



The D-Link® Media Server Setup Wizard will appear.

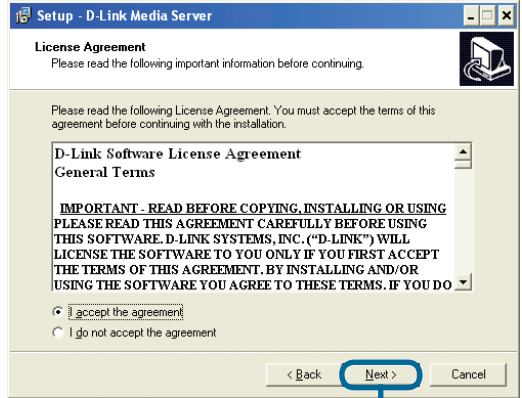


Click **Next**

# 1

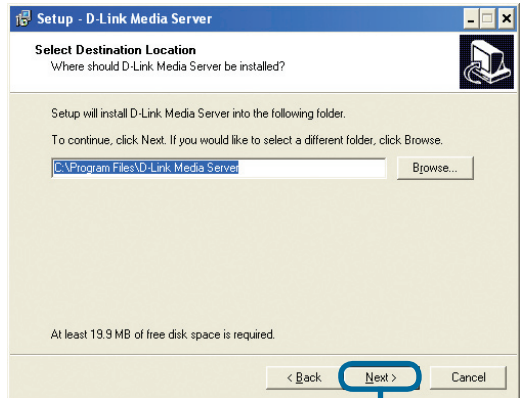
## Installing the D-Link® Media Server Software (continued)

The D-Link license agreement screen appears.



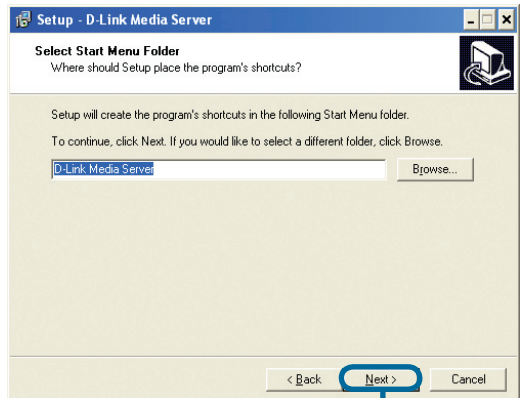
Click **Next**

Choose a Destination location or accept the default location. This is where the D-Link Media Server software will be copied to on your system.



Click **Next**

Choose a start menu folder or accept the default location.



Click **Next**

# 1

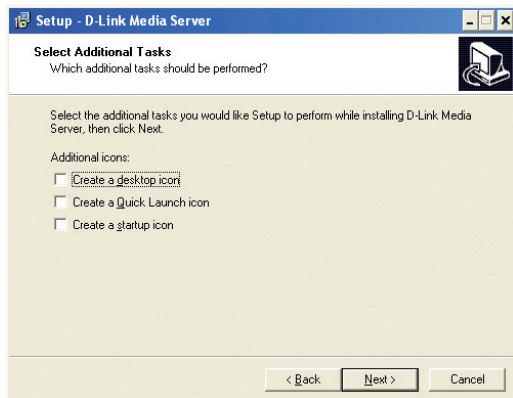
## Installing the D-Link® Media Server Software (continued)

Select the icons you want created.

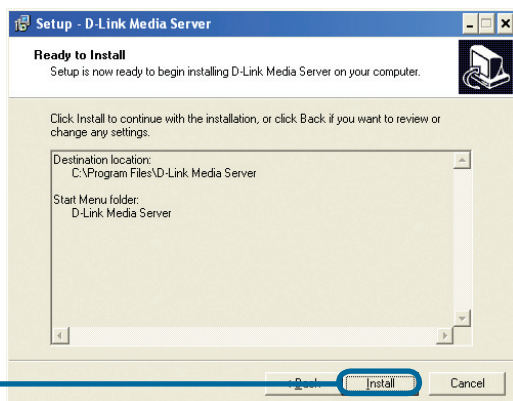
Select **Create a desktop icon** to access the program from your desktop.

Select **Create a Quick Launch icon** to access the program from your taskbar.

Select **Create a startup icon** so the program launches on startup.



The necessary software will be copied to the specified locations on your computer.



Click **Install**

Check **Launch D-Link® Media Server**

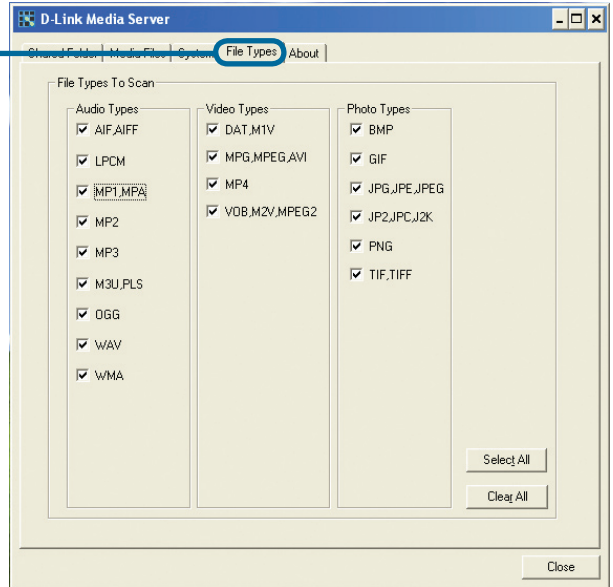


Click **Finish**

# Configuring the D-Link® Media Server Software

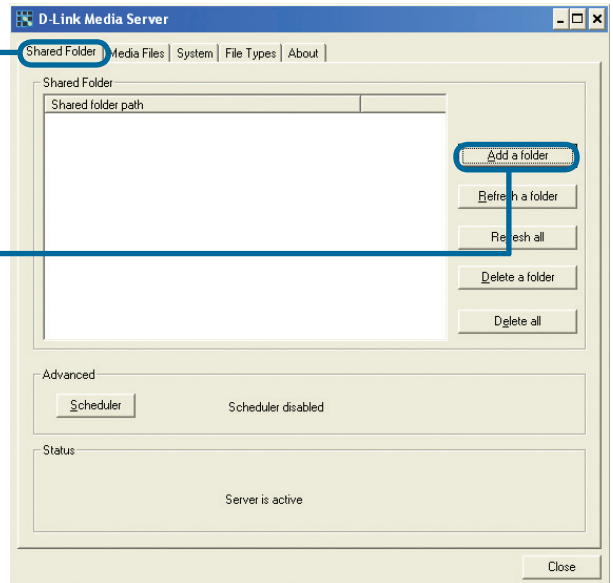
If you checked the **Launch D-Link Media Server** check box, the following screens will be displayed.

The **File Types** tab is where you select the types of audio, video, and photo files that you want to share.



The **Shared Folders** tab is where you select the folders that contain your audio, video, and photo files.

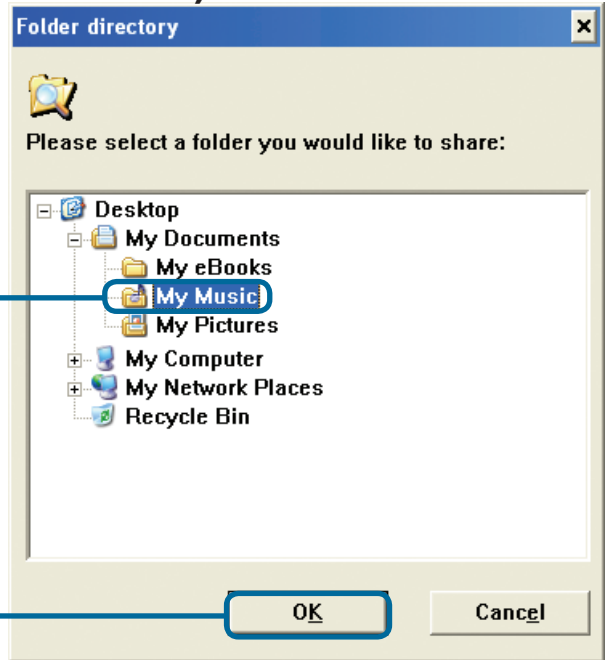
Click **Add a folder**



# 2

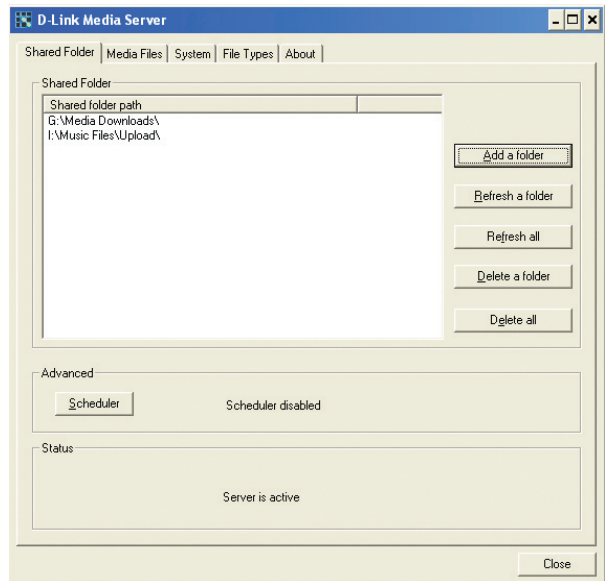
## Configuring the D-Link® Media Server Software (continued)

Select the folder containing the files you wish to share.



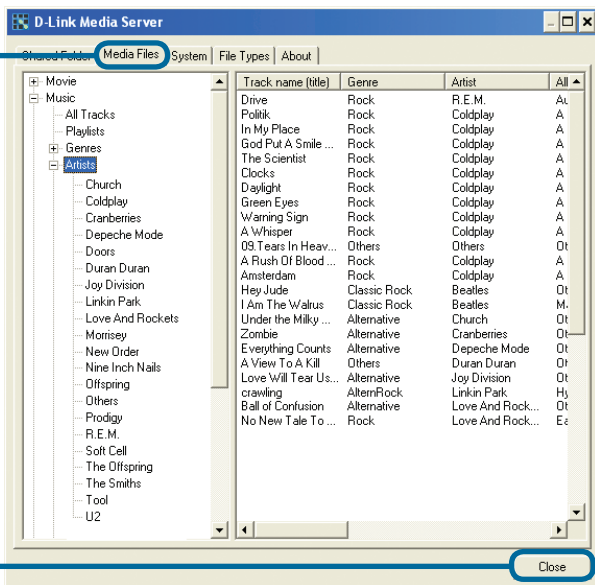
Click **OK**

Repeat the steps until all of the folders containing audio, video, and photos you want to share have been added.



# Configuring the D-Link<sup>®</sup> Media Server Software (continued)

The **Media Files** tab will show all your audio, video, and photo files as well as display important file information.



Click **Close**



# 3

## Connecting the DSM-320RD

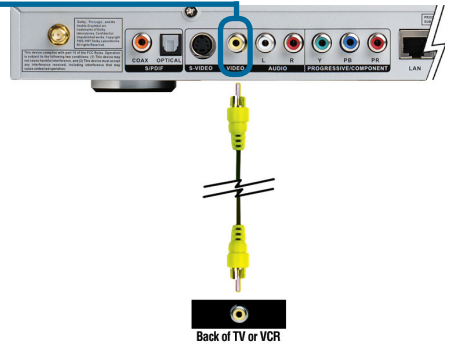
All audio, video, and networking connections are located on the rear panel of the DSM-320RD.

### Video Connections

Select one of three ways to connect video to your DSM-320RD:

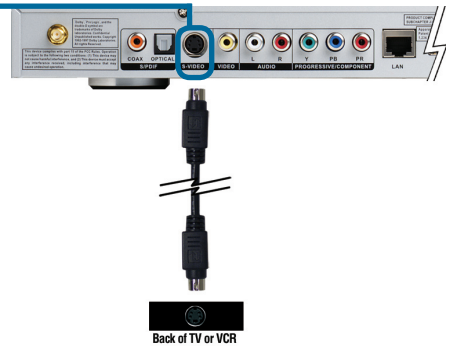
- **Composite Video Connector**

Plug the supplied yellow video cable into the DSM-320RD and the matching opposite end of the cable to your television input.



- **S-Video Connector**

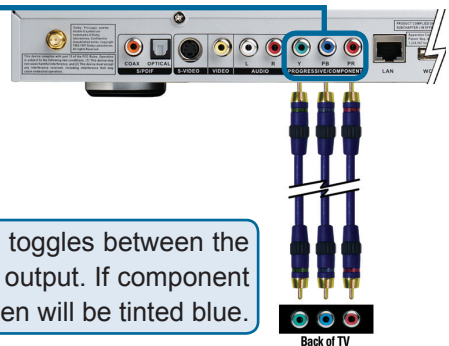
Plug the supplied S-Video cable into the S-Video connector and the opposite end into the S-Video connector on your television.



- **Component Connectors**

Match the color coded cables to the matching connectors on the DSM-320RD and into the component video input of your television.

*Note: This cable is not supplied.*



The **VIDEO OUT** button on the remote control toggles between the composite/S-Video output and the component output. If component connectors are used but not selected, the screen will be tinted blue.

# 3

## Connecting the DSM-320RD (continued)

### Audio Connections

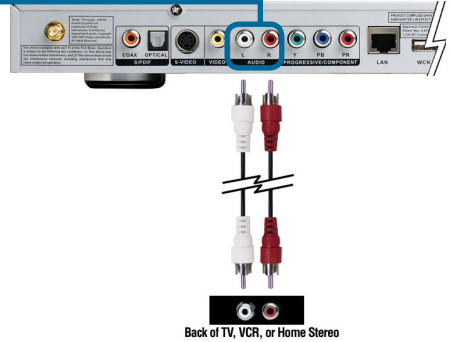
The **AUDIO OUT** button on the remote control toggles between the composite audio output and the digital audio output (optical/coaxial).

Select one of three ways to connect audio to your DSM-320RD:

- Composite Audio**

Plug the supplied red and white connectors into the color-coded matching jacks on the DSM-320RD.

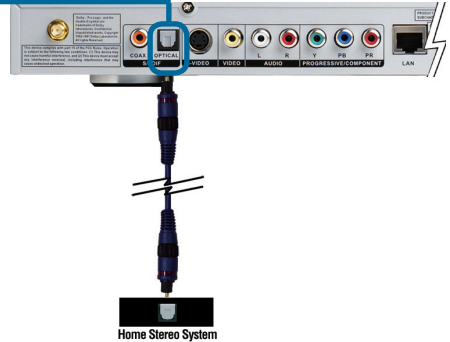
Plug the opposite ends to the matching jacks on your television or audio/video system.



- Optical Digital Audio**

Connect an optical audio connector into the DSM-320RD and the matching opposite end of the cable to the audio input of your audio system.

*Note: This cable is not supplied.*



- Coaxial Digital Audio**

Connect a coaxial audio connector into the DSM-320RD and the matching opposite end of the cable to the audio input of your audio system.

*Note: This cable is not supplied.*



# 3

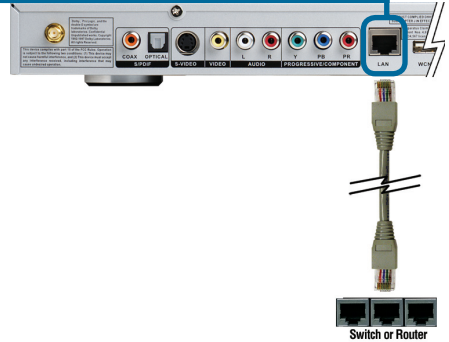
## Connecting the DSM-320RD (continued)

### Network Connections

Select one of two ways to connect a network to your DSM-320RD:

- **RJ-45 Ethernet Connector**

Connect the supplied Ethernet cable to the network cable connector, and attach the other end to the network.



- **Wireless Antenna**

Attach the supplied antenna by threading it onto the antenna connector. Be sure the antenna is secure and in an upright position.

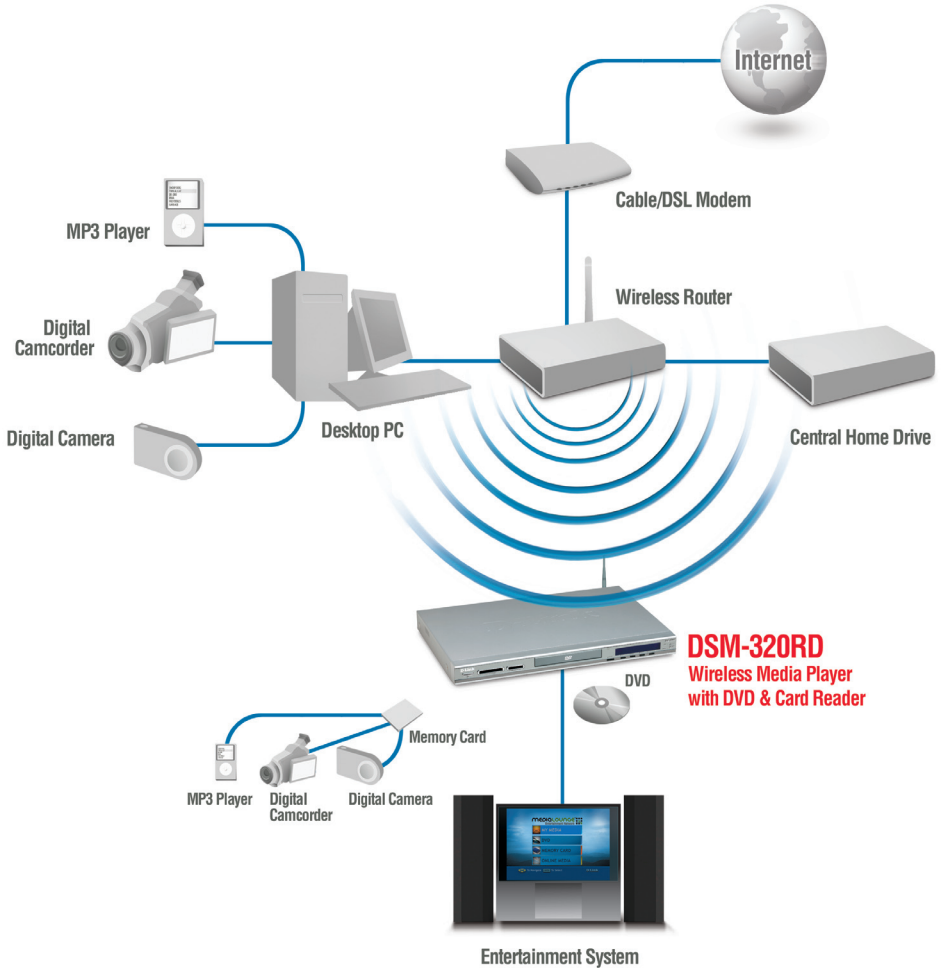


Note: You may have an Ethernet cable plugged into the unit and have the wireless antenna connected. Neither will interfere with the other, but only one network can be accessed at a time (wired or wireless). The network connection type is selected in the Setup Wizard and can be changed by going to the Setup Menu. To access the Setup Menu, press the SETUP button on the remote control.

# 3

## Connecting the DSM-320RD (continued)

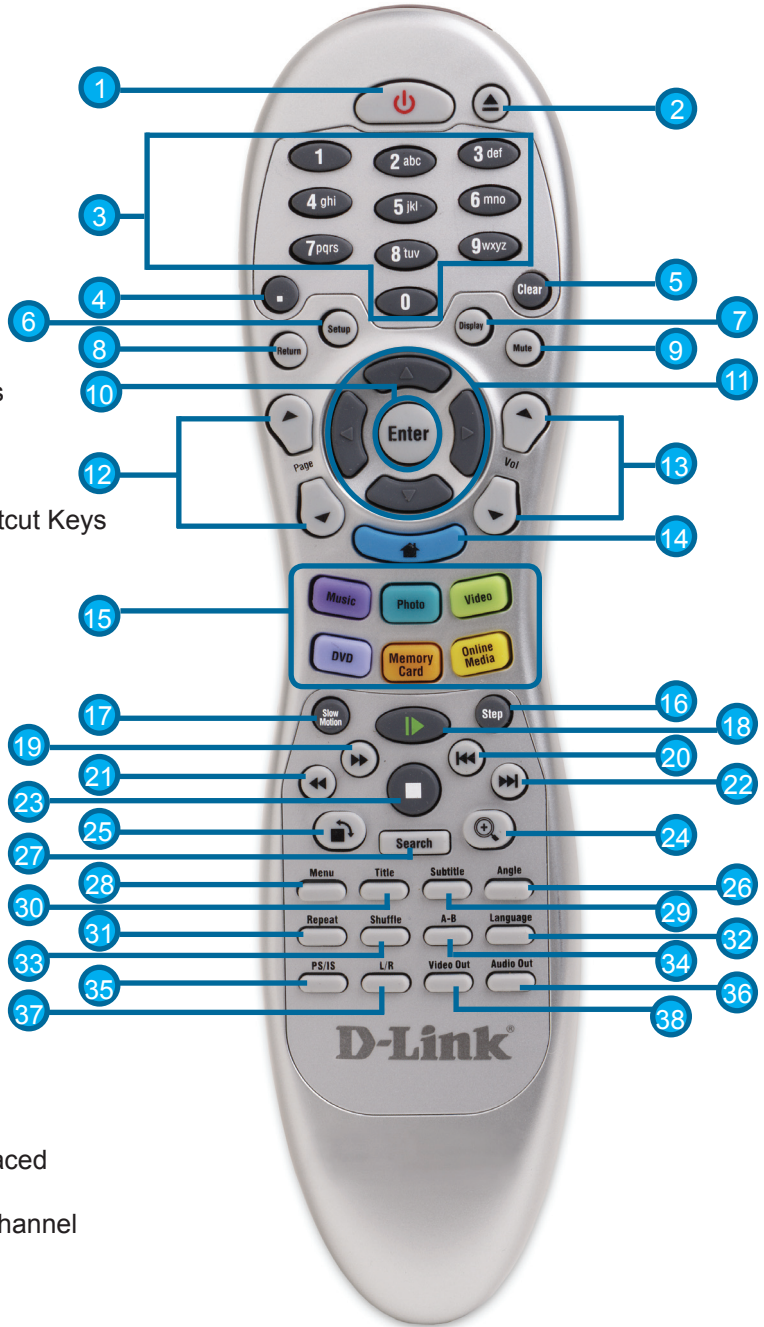
Below is a diagram displaying what your network might look like once all of the connections have been made to the MediaLounge™ DSM-320RD Wireless Media Player.



# 4

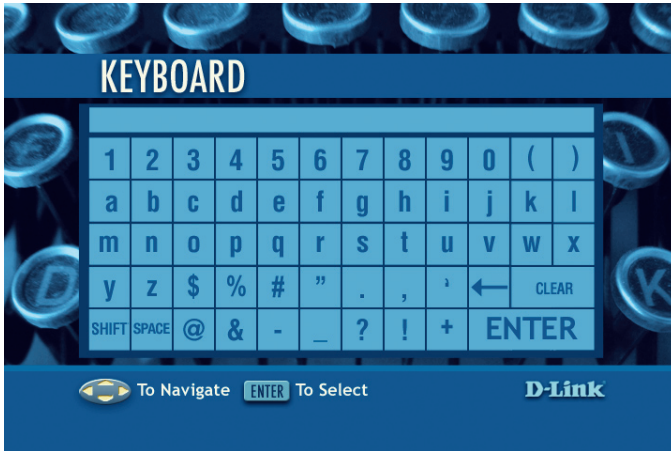
## Using the Remote Control

1. Power
2. Eject DVD
3. Numeric Keys
4. "." (period or dot)
5. Clear
6. Setup
7. Display
8. Return
9. Mute
10. Enter
11. Navigation Buttons
12. Page Up & Down
13. Volume + & -
14. Home
15. Color-Coded Shortcut Keys
16. Step
17. Slow Motion
18. Play/Pause
19. Fast Forward
20. Previous
21. Rewind
22. Next
23. Stop
24. Zoom
25. Rotate
27. Search
26. Angle
28. Menu
29. Subtitle
30. Title
31. Repeat
32. Language
33. Shuffle
34. A-B Video Replay
35. Progressive/Interlaced
36. Audio Out
37. Left/Right Audio Channel
38. Video Out



# Using the On-Screen keyboard

Whenever you need to enter text, press ENTER on the remote and the on-screen keyboard will appear.



The keyboard is used for a variety of functions such as naming your DSM-320RD and performing searches for music, photos or video. To use the keyboard, highlight a character with the **arrow** buttons on the remote control and press the **ENTER** button. Text can also be entered by using numbers 2-9 on the remote, just as you would on a cell phone. Highlight **ENTER** and press **ENTER** when you're finished entering text.

## 6 DSM-320RD Setup Wizard

Upon initial startup, the DSM-320RD displays the Setup Wizard. The Setup Wizard will guide you through the necessary steps for configuring the DSM-320RD. You can also use Windows® Connect Now (WCN) to simplify the wireless setup, skip to step 7 on page 17.

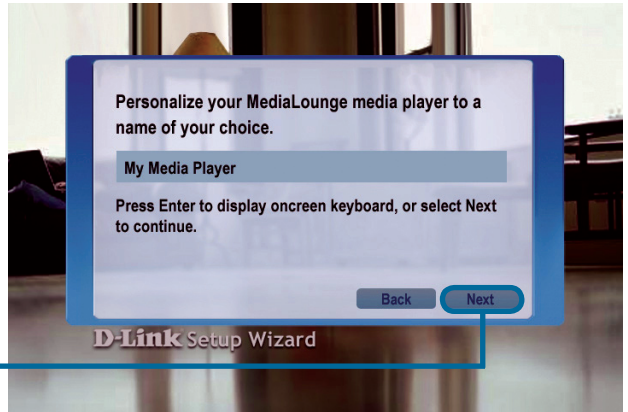


Click **Next** to begin the DSM-320RD Setup Wizard.

# 6

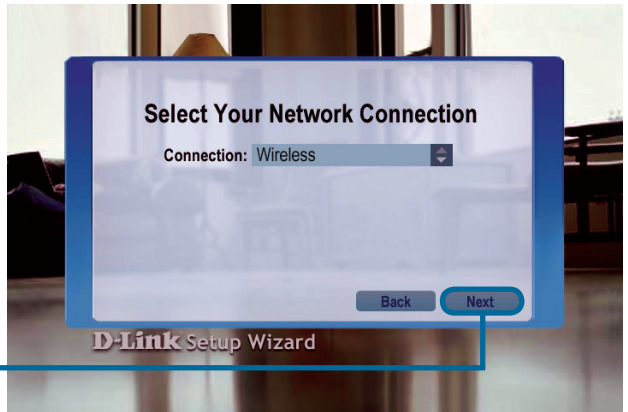
## DSM-320RD Setup Wizard (continued)

Type in a name of your choice or select the default setting.



Click **Next** to continue

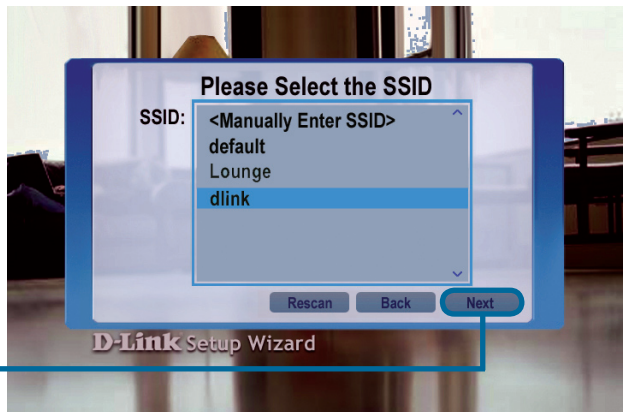
Select your network connection type.



If selecting **Wired**, skip to **Your Current Network Settings** on page 15.

Click **Next** to continue

If you are using a wireless network connection, **please select the SSID** of the network.



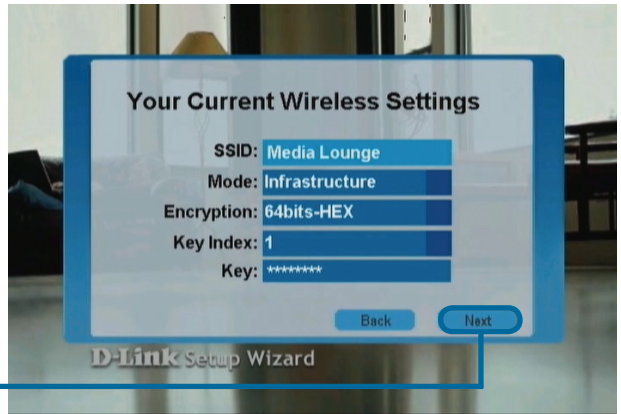
Click **Next** to continue

# 6

## DSM-320RD Setup Wizard (continued)

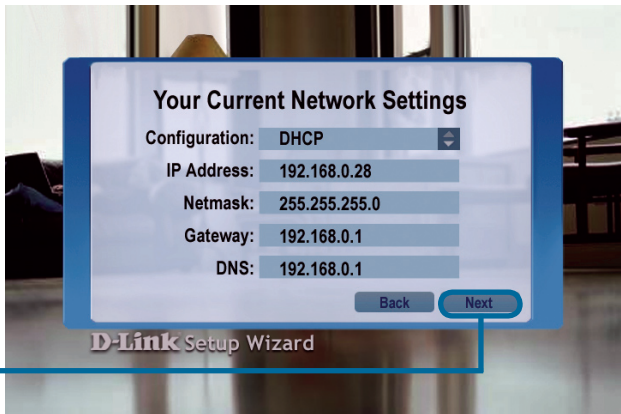
Your current wireless settings are displayed and can be changed at this point.

Keys can be entered in hex or ASCII format. See the User Manual located on the CD-ROM for details.



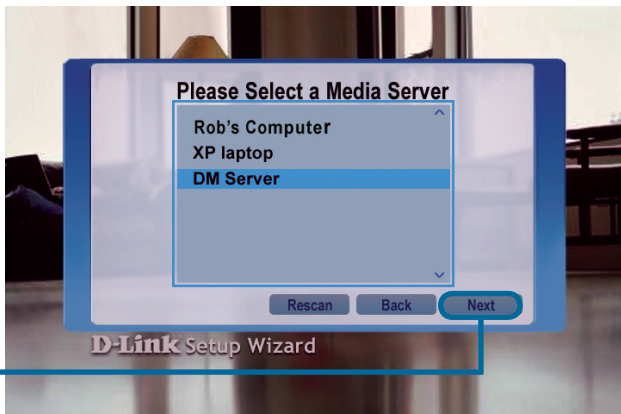
Click **Next** to continue

Your current network settings are displayed and can be changed at this point.



Click **Next** to continue

Please select a Media Server from the list.

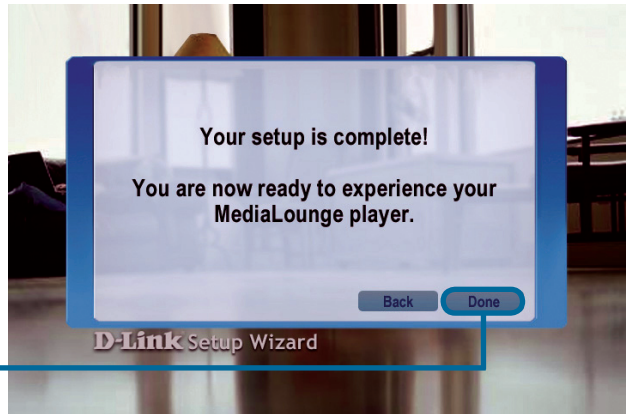


Click **Next** to continue



# 6

## DSM-320RD Setup Wizard (continued)



### Your setup is complete!

For detailed usage instructions and information on supported file types, please refer to the User Manual that is located on the MediaLounge™ CD-ROM.

Your MediaLounge™ DSM-320RD is now ready to stream music, photo, and video content for enjoyment on your home entertainment center.

From this home screen, you can access MY MEDIA, DVD, MEMORY CARD, or ONLINE MEDIA. To jump directly to the home screen, press the **HOME** button on the remote control.

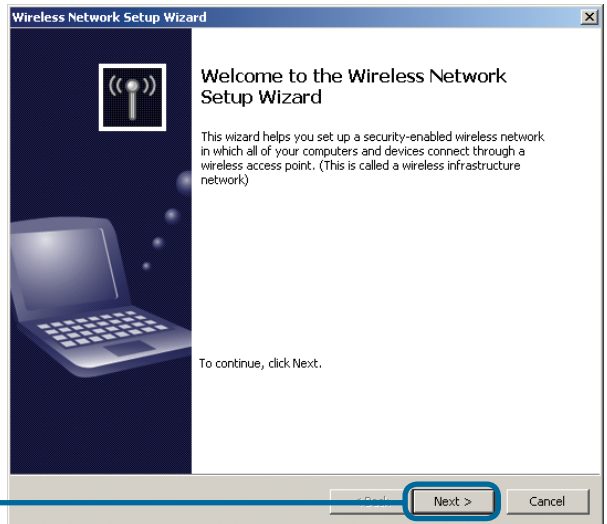
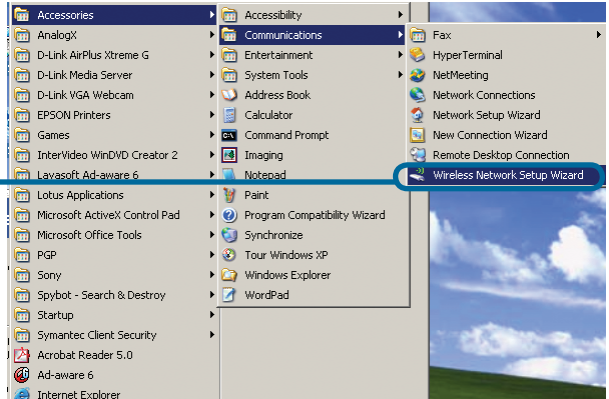


# 7

## Configuring Your Wireless Settings using Windows® Connect Now (WCN)

If you already have wireless settings configured on your PC, instead of using the setup wizard, you can use Windows® Connect Now (WCN) to configure the wireless settings on your DSM-320RD. Note: WCN is only available on PCs running Windows® XP with Service Pack 2 installed.

Go to Start > All Programs > Accessories > Communications and click **Wireless Network Setup Wizard**.



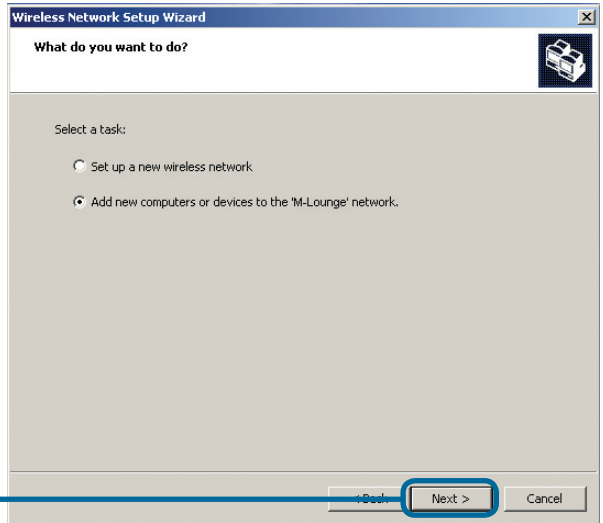
Click **Next** to continue

# 7

## Configuring Your Wireless Settings using WCN (continued)

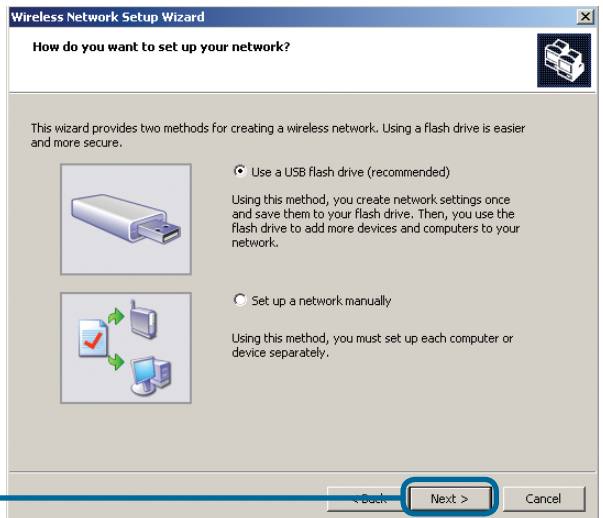
Select the option to add new computers or devices to your existing wireless network.

Click **Next** to continue



Select the option **Use a USB flash drive**, to save your wireless network settings.

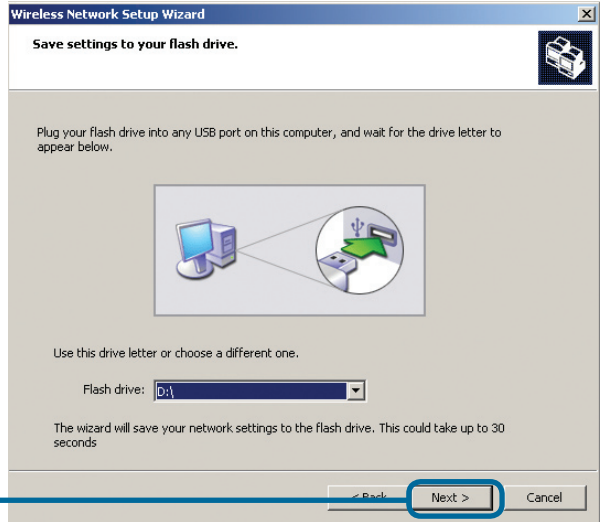
Click **Next** to continue



# 7

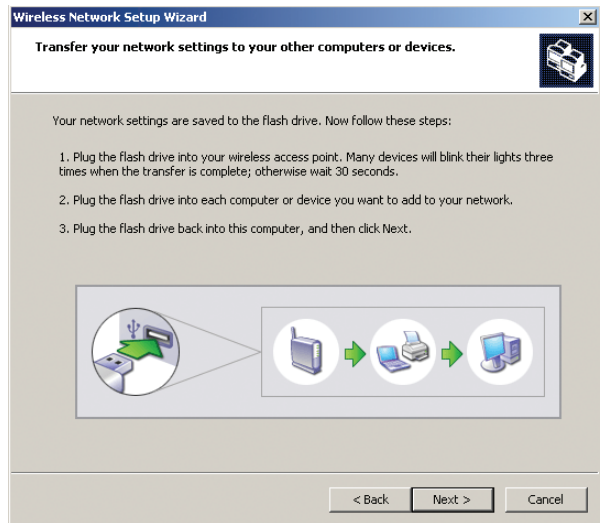
## Configuring Your Wireless Settings using WCN (continued)

Plug your flash drive into a USB port on this computer.



Click **Next** to continue

This screen will appear when the wireless settings have been saved to the USB flash drive.



# 7

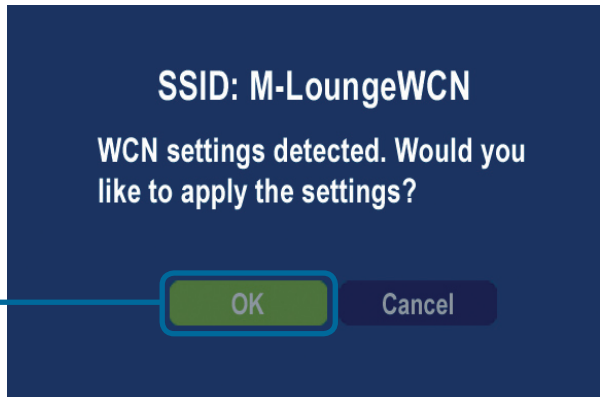
## Configuring Your Wireless Settings using WCN (continued)

Next, remove the USB Flash Drive from your PC and insert it into the USB port on the DSM-320RD, which is located on the back panel and is labeled “Windows Connect Now”.



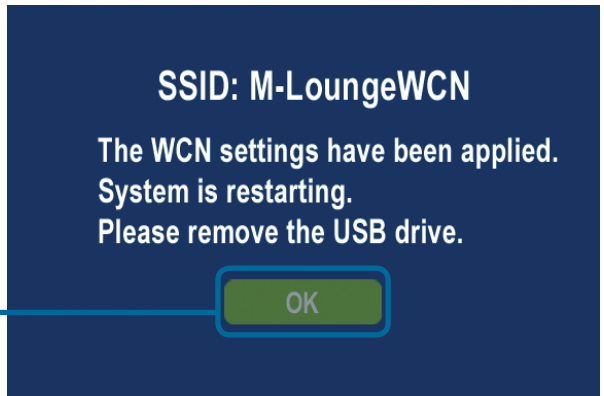
The following screens will appear on the DSM-320RD.

Click **OK** to continue



The following screen confirms that your wireless settings have been applied.

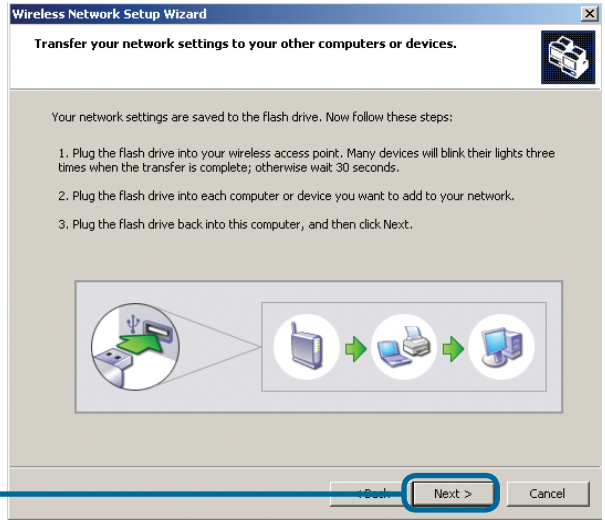
Click **OK** to continue



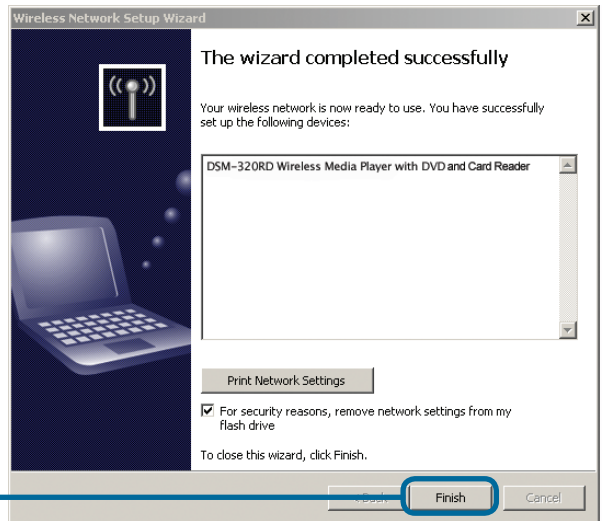
# 7

## Configuring Your Wireless Settings using WCN (continued)

Next, remove the USB Flash Drive from the DSM-320RD and insert it back into the USB port on your PC.



Click **Next** to continue



Click **Finish**.

### You have Completed Configuring your Wireless Settings using WCN!

# Notes

# Technical Support

You can find software updates and user documentation on the D-Link website.

D-Link provides free technical support for customers within the United States and within Canada for the duration of the warranty period on this product.

U.S. and Canadian customers can contact D-Link Technical Support through our website, or by phone.

## Tech Support for customers within the United States:

***D-Link Technical Support over the Telephone:***

(877) 453-5465

24 hours a day, seven days a week.

***D-Link Technical Support over the Internet:***

<http://support.dlink.com>

[email:support@dlink.com](mailto:support@dlink.com)

## Tech Support for customers within Canada:

***D-Link Technical Support over the Telephone:***

(800) 361-5265

Monday to Friday 7:30am to 9:00pm EST

***D-Link Technical Support over the Internet:***

<http://support.dlink.ca>

[email:support@dlink.ca](mailto:support@dlink.ca)

