

# D-Link Quick Installation Guide

This product can be used with the following operating systems:  
Windows XP, Me, 2000, 98SE  
Macintosh OS v10.1



**DUB-C2**  
2-Port USB 2.0  
Cardbus Adapter

## Before You Begin

You must have at least the following:

- Windows XP/Me/2000/98SE or Macintosh OS v10.1
- Pentium Class CPU or Higher
- One Available 32-bit Cardbus Slot
- CD-ROM Drive

## Check Your Package Contents

These are the items included with your purchase:

If any of the below items are missing, please contact your reseller.



- DUB-C2 Hi-Speed USB 2.0 Notebook Cardbus Adapter



- CD-ROM (containing Drivers, Installation Guide and Warranty)



## Windows Users

**Run the Driver CD before you install the DUB-C2.**

The Driver CD contains an installation program that significantly simplifies your installation process.

# 1

## Insert the D-Link CD-ROM Into Your Computer

Mac users please proceed to the last section of this guide.

Turn on your computer and insert the **D-Link DUB-C2 Driver CD** in the CD-ROM drive.

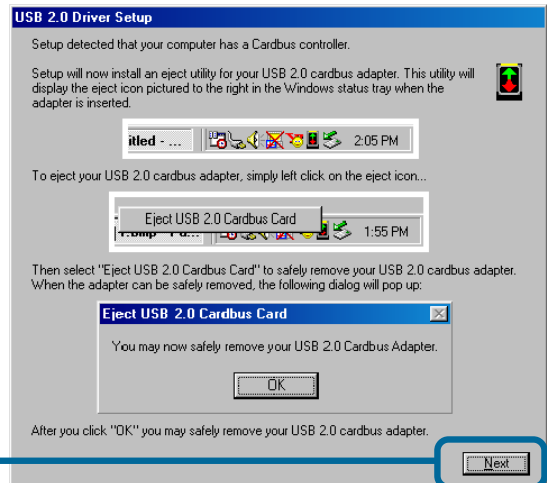
Click **Install Driver**



If the Autorun screen does not automatically start, click on **Start > Run**, enter "**D:\Autorun.exe**" and click **OK**. "**D**" represents the letter of your CD-ROM drive. Replace it if your CD-ROM drive is a different letter.

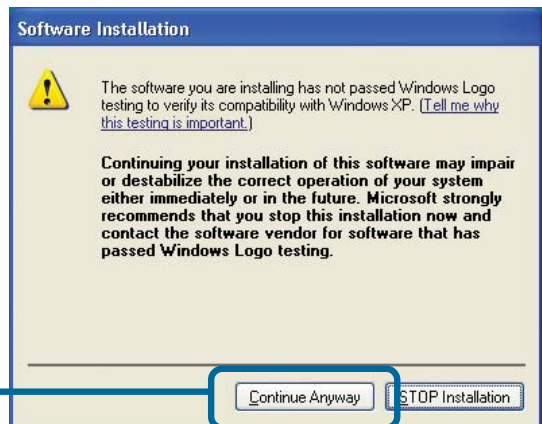
Only **Windows 98** users will see this screen.

Click **Next**

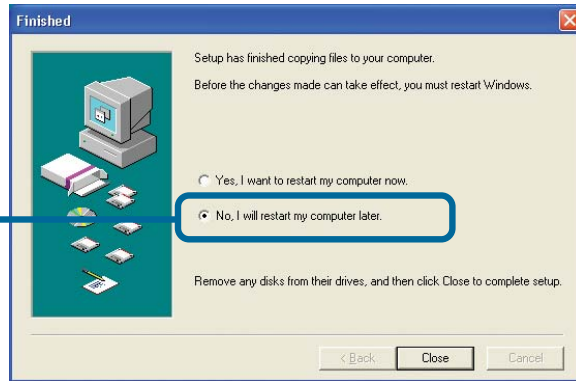


Only **Windows XP** users will see this screen.

Click **Continue Anyway**



Select **No** and **Shut Down** Your Computer



## 2 Installing The DUB-C2 USB 2.0 Cardbus Adapter Into Your Computer



**Make sure your computer is completely turned OFF before installing the DUB-C2.**

Locate an available cardbus slot and insert the DUB-C2 into the cardbus slot.



**Turn On** your computer.

# 3

## Completing The Driver Installation

### Windows XP Users

Follow these steps to complete installation under Windows XP for each device that Windows prompts you to install.

The image shows three sequential screenshots of the Windows XP Found New Hardware Wizard. Each screenshot has a callout box with a blue border and a red arrow pointing to a specific button.

- First Screenshot: Found New Hardware Wizard**  
Title: Found New Hardware Wizard  
Text: Welcome to the Found New Hardware Wizard  
Text: This wizard helps you install software for:  
NEC PCI to USB Enhanced Host Controller B1  
Text: If your hardware came with an installation CD or floppy disk, insert it now.  
Text: What do you want the wizard to do?  
Options:  Install the software automatically (Recommended) |  Install from a list or specific location (Advanced)  
Text: Click Next to continue.  
Buttons: < Back, Next >, Cancel  
Callout: Click **Next**
- Second Screenshot: Hardware Installation**  
Title: Hardware Installation  
Text: The software you are installing for this hardware:  
NEC PCI to USB Enhanced Host Controller B1  
Text: has not passed Windows Logo testing to verify its compatibility with Windows XP. (Tell me why this testing is important.)  
Text: Continuing your installation of this software may impair or destabilize the correct operation of your system either immediately or in the future. Microsoft strongly recommends that you stop this installation now and contact the hardware vendor for software that has passed Windows Logo testing.  
Buttons: Continue Anyway, STOP Installation  
Callout: Click **Continue Anyway**
- Third Screenshot: Found New Hardware Wizard**  
Title: Found New Hardware Wizard  
Text: Completing the Found New Hardware Wizard  
Text: The wizard has finished installing the software for:  
NEC PCI to USB Enhanced Host Controller B1  
Text: Click Finish to close the wizard.  
Buttons: < Back, Finish, Cancel  
Callout: Click **Finish**

# Windows XP Users

The image displays three sequential screenshots of the Windows XP Found New Hardware Wizard, with callouts indicating the required user actions:

- First Screenshot: Welcome to the Found New Hardware Wizard**  
This screen provides an overview of the wizard's purpose: to install software for a USB 2.0 Root Hub Device. It offers two installation options: "Install the software automatically (Recommended)" (selected) and "Install from a list or specific location (Advanced)". A callout box labeled "Click **Next**" points to the "Next >" button.
- Second Screenshot: Hardware Installation**  
This screen displays a yellow warning triangle and a message stating that the software for the USB 2.0 Root Hub Device has not passed Windows Logo testing. It includes a warning that continuing the installation may impair system stability and recommends contacting the hardware vendor. A callout box labeled "Click **Continue Anyway**" points to the "Continue Anyway" button.
- Third Screenshot: Completing the Found New Hardware Wizard**  
This screen indicates that the software installation is complete. A callout box labeled "Click **Finish**" points to the "Finish" button.


# Windows 2000 & Me Users

The DUB-C2 driver installation will proceed automatically for Windows 2000 & Me users while Windows is starting.


# Windows 98SE Users

Follow these steps to complete installation under Windows 98. You will have to repeat these steps twice.

**Click Next**

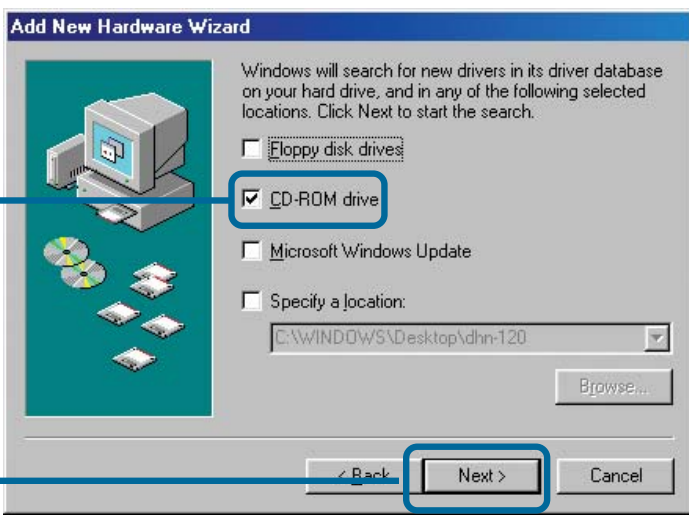


**Click Next**



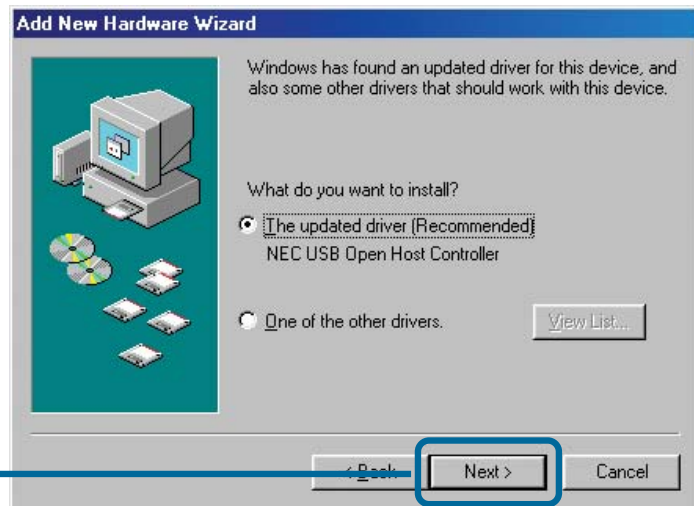
**Select only CD-ROM drive**

**Click Next**

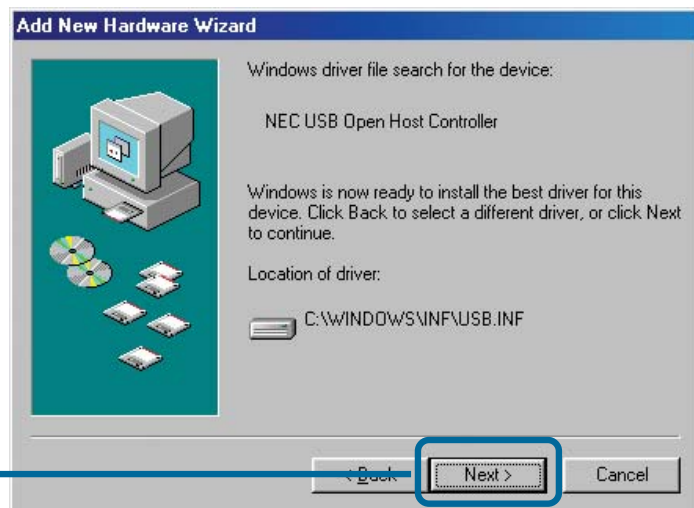




# Windows 98SE Users

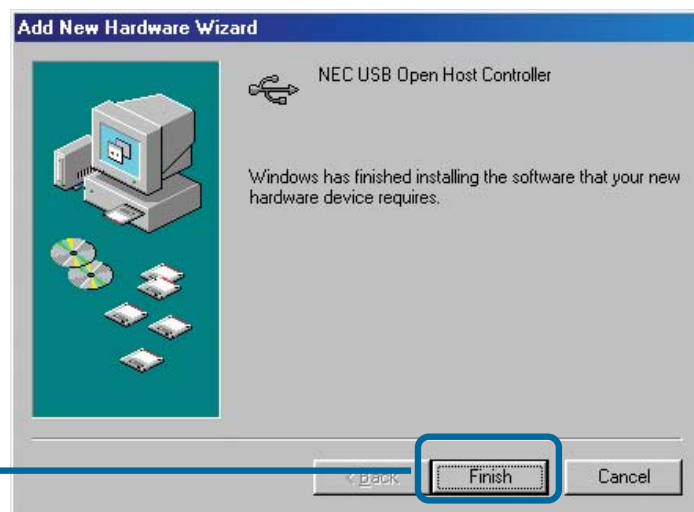


Click **Next**



Click **Next**

Windows 98 may prompt you for the Windows 98 Setup disk. If prompted, insert the Windows 98 Setup disk and select **OK**.



Click **Finish**

If prompted, **Restart Your Computer** to complete the installation.

# Macintosh OS X 10.1 Users

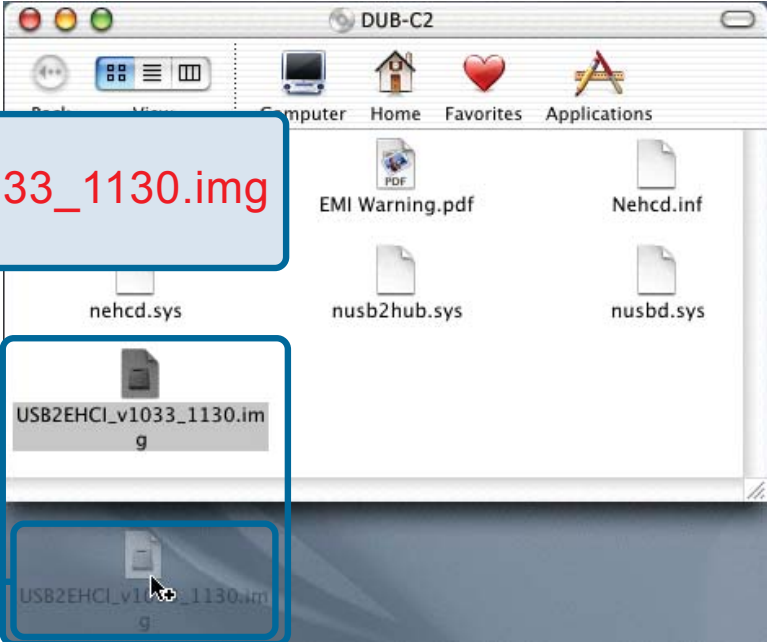
Follow these steps to complete installation under Macintosh OS X 10.1.

Insert the **DUB-C2 Driver CD** into the CD-ROM drive.

Double-click **DUB-C2** when it appears on the desktop



Drag-&-drop **USB2EHCI\_V1033\_1130.img** to the desktop



Double-click **USB2EHCI-V1033\_1130.IMG** from the desktop

Double-click **USB2EHCI\_V1033** when it appears on the desktop



Double-click **USB2EHCI\_V1033.pkg**





# Macintosh OS X 10.1

Install USB 2.0 EHCI Support v1.0.3.2

**Authorization**

● Introduction  
● Select Destination  
● Installation Type  
● Installing  
● Finish Up

You need an Administrator password to install the software.

Click the **Lock**

Click the lock to make changes.

Close

Authenticate

You need an administrator name and password or phrase to make changes in Installer.

Name: adimistrator

Password or phrase:

Click **OK**

Cancel OK

Install USB 2.0 EHCI Support v1.0.3.2

**Welcome to the USB 2.0 EHCI Support v1.0.3.2**

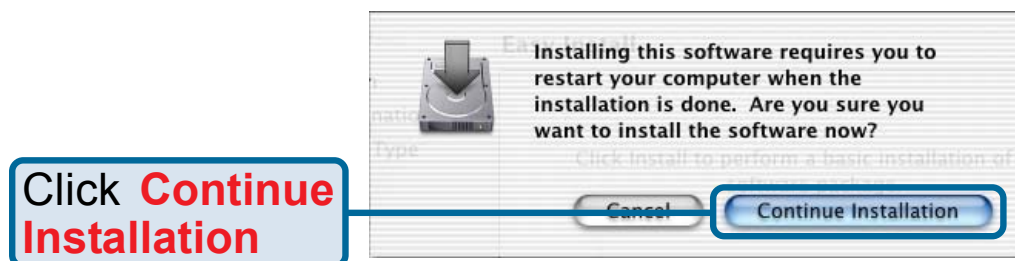
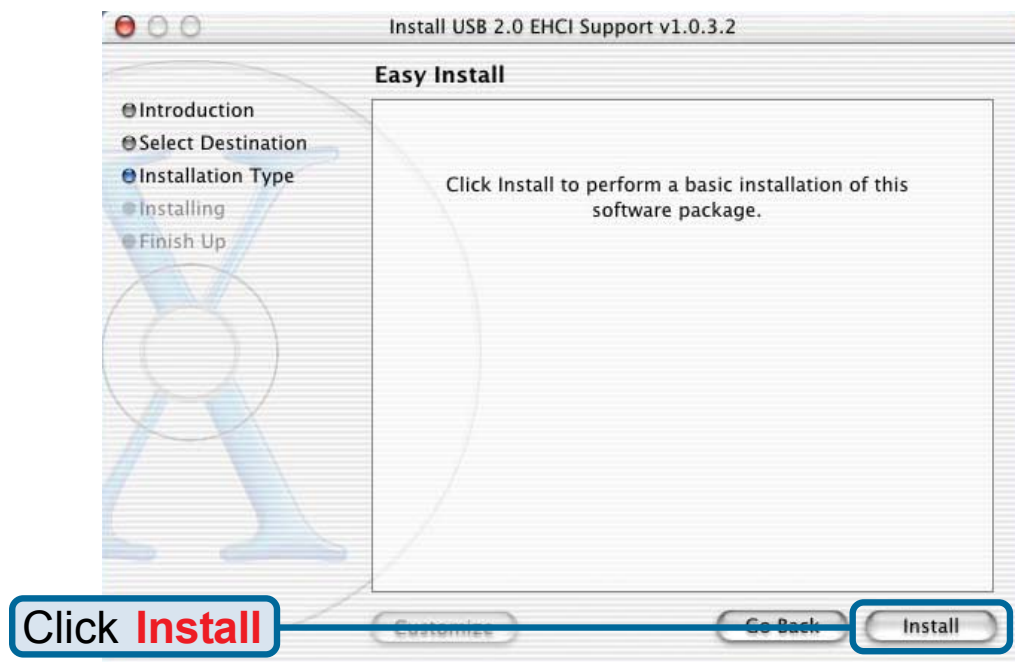
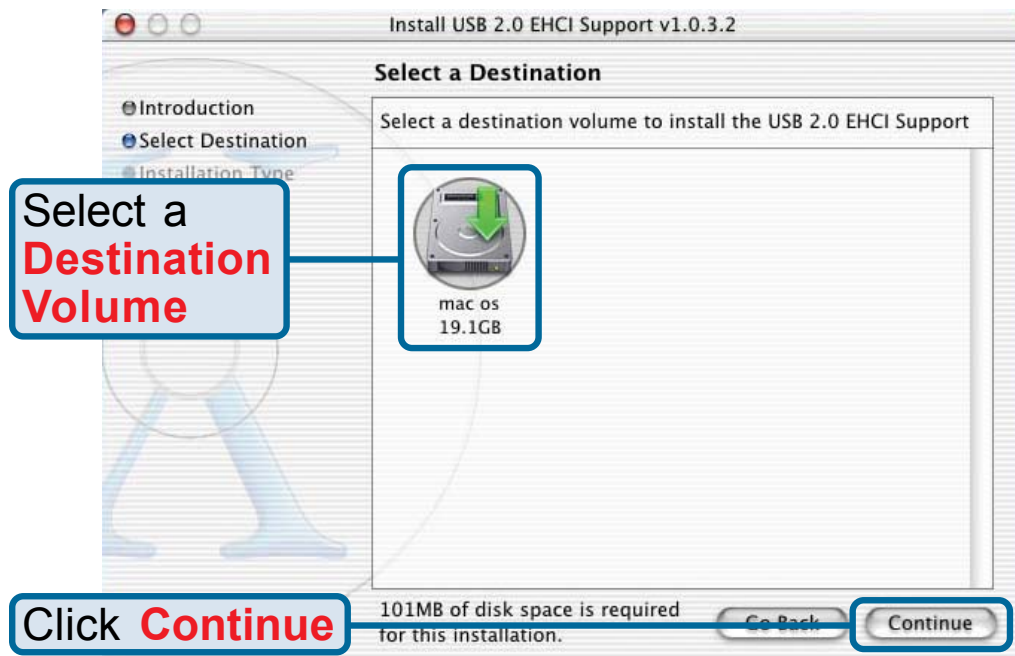
● Introduction  
● Select Destination  
● Installation Type  
● Installing  
● Finish Up

Welcome to the Mac OS X Installation Program. You will be guided through the steps necessary to install this software.

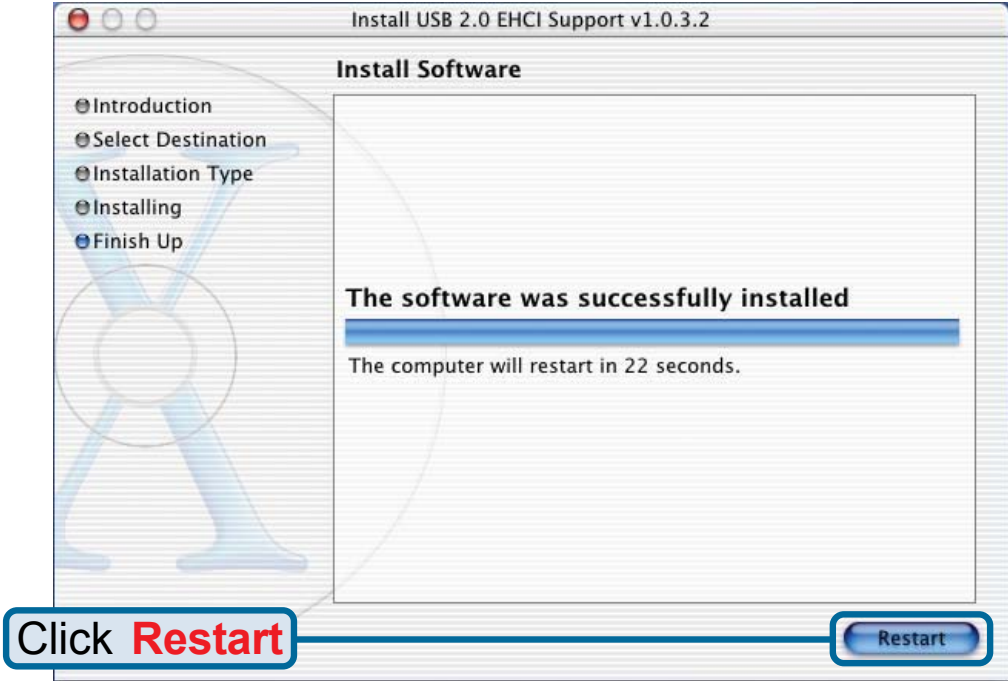
Click **Continue**

Continue

# Macintosh OS X 10.1



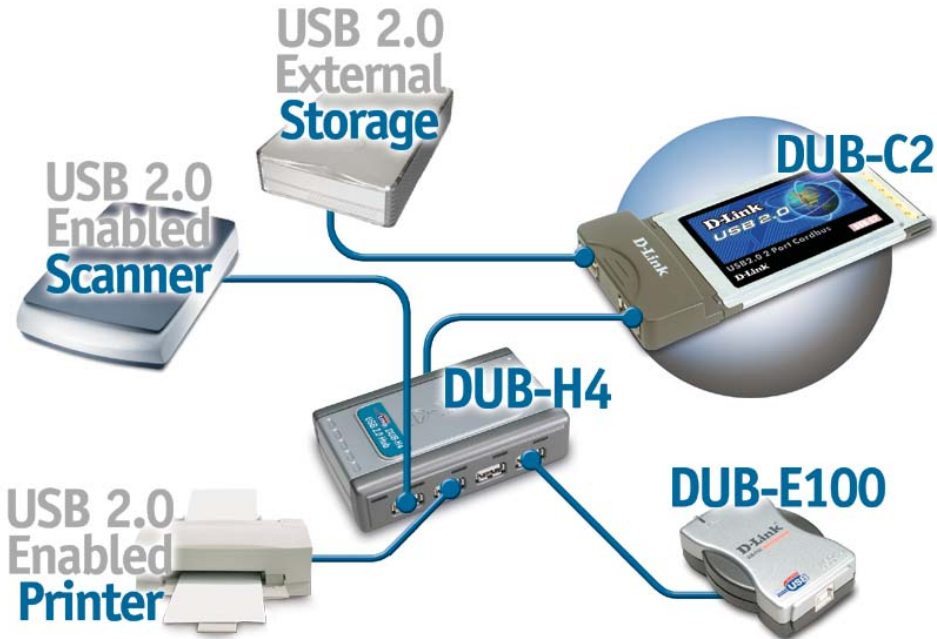
# Macintosh OS X 10.1



## Typical DUB-C2 Installation

Once properly installed, the **DUB-C2 Hi-Speed USB 2.0 2-Port Cardbus Adapter** can be used to connect both USB 2.0 and USB 1.1 devices to any of its two USB ports.

The diagram below shows a typical installation using the DUB-C2 and other USB devices.



# 4

## Introduction to USB 2.0 and Helpful Tips

### Introduction

USB stands for Universal Serial Bus. It is a standard for connecting external devices to your computer quickly and easily. One of the nice things about USB is that power can be provided to the USB device through the USB cable. However, some devices such as printers need more power than the USB ports can provide, so those devices will have to use an external power source. USB also allows the device to be connected and removed from the PC without the need to shut-down the computer.

USB 2.0 is the second generation standard that improves on USB 1.1 to provide faster and more reliable data transfers. USB 1.1's speed of 12Mbps is extended to 480Mbps in USB 2.0. The improved speed and bandwidth opens up the possibility for newfound solutions such as external backup or data storage solutions, as well as digital audio and video solutions.

One important feature of the USB 2.0 standard is that it is backward compliant with USB 1.0 and USB 1.1. This means that all of your current USB products will work with USB 2.0 adapters.

Many USB products are widely available on the market and more are being developed for future release. Because of the high speed of the USB interface, a USB hub can be used to connect more than one USB device to one USB port at one time. The USB standard specifies that up to 127 devices can be connected to your computer.

### Helpful Tips

- When connecting the USB cable to the computer, make sure that the USB cable is inserted securely.
- Remember that when connecting USB 1.0 or USB 1.1 products into a USB 2.0 adapter, the USB 1.x product will not work faster.
- To ensure optimal performance when using USB 2.0 devices, use a USB 2.0 certified cable such as the DUB-C5AB.
- The DUB-C2 will work in Macintosh OS 8/9 at USB 1.1 speeds using the built-in drivers for the appropriate operating system.

## Technical Support

You can find the most recent software and user documentation on the **D-Link** website.

**D-Link** provides free technical support for customers within the United States for the duration of the warranty period on this product.

U.S. customers can contact **D-Link** technical support through our web site or by phone.

**D-Link Technical Support over the Telephone:**

(877) 45D-LINK

(877) 453-5465

24 hours a day, seven days a week

**D-Link Technical Support over the Internet:**

<http://support.dlink.com>

email: [support@dlink.com](mailto:support@dlink.com)

