

D-Link

Quick Installation Guide

This product works with the following operating system software: **Windows XP, Windows 2000, Windows Me, Windows 98SE**



DWL-G520

Xtreme G 2.4GHz
Wireless PCI Adapter

Before You Begin

You must have at least the following:

- A desktop computer with an available 32-bit PCI slot
- At least a 300 MHz processor and 32MB of memory
- An 802.11g or 802.11b Access Point (for Infrastructure Mode) or another 802.11g or 802.11b wireless adapter (for Ad-Hoc; Peer-to-Peer networking mode.)

Check Your Package Contents

These are the items included with your DWL-G520 purchase:



DWL-G520 Xtreme G 2.4GHz Wireless PCI Adapter



CD-ROM (containing Drivers, Manual and Warranty)

If any of the above items are missing, please contact your reseller.

1

Insert the D-Link CD-ROM Into Your Computer

Turn on the computer and **Insert** the **D-Link Xtreme G DWL-G520 Driver CD** in the CD-ROM drive.

The step-by-step instructions that follow are shown in **Windows XP**. The steps and screens are similar for the other Windows operating systems



Do **NOT** install the **DWL-G520 Wireless PCI Adapter** into your computer before installing the driver software from the **D-Link CD!**

1

Continued...

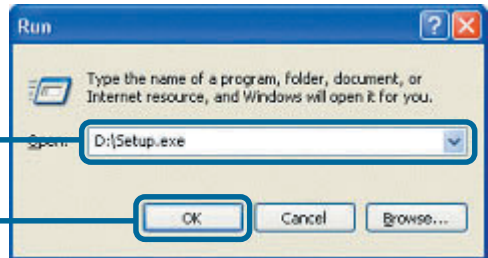
The Install Screen will appear.


Click **Install Drivers**



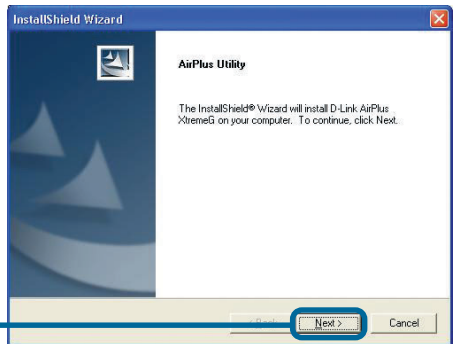
If the CD Autorun function does not automatically start on your computer, type "D:\Setup.exe." If it does start, proceed to the next screen.

Type **"D:\Setup.exe."**

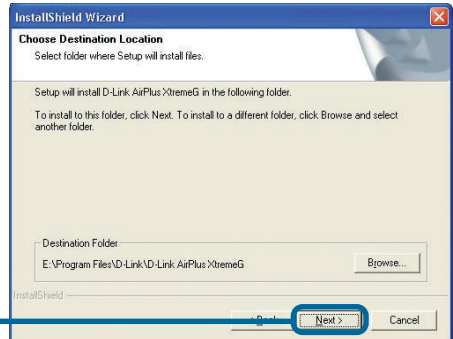


 **The letter "D" represents the letter of the CD-ROM drive. Your CD-ROM drive may be a different drive letter.**

Click **OK**

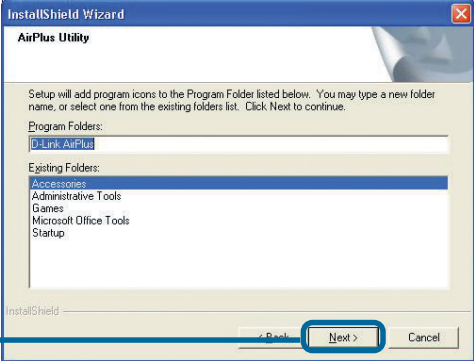


Click **Next**

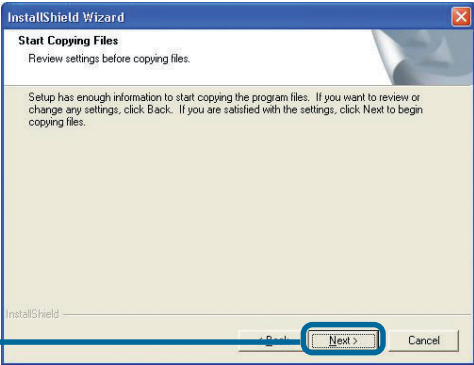


Click **Next**

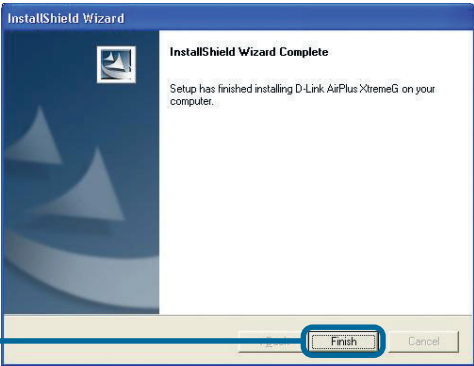
Click Next



Click Next



Click Finish

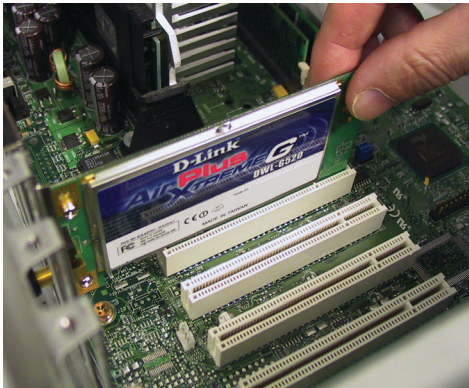


Shut down your computer

2

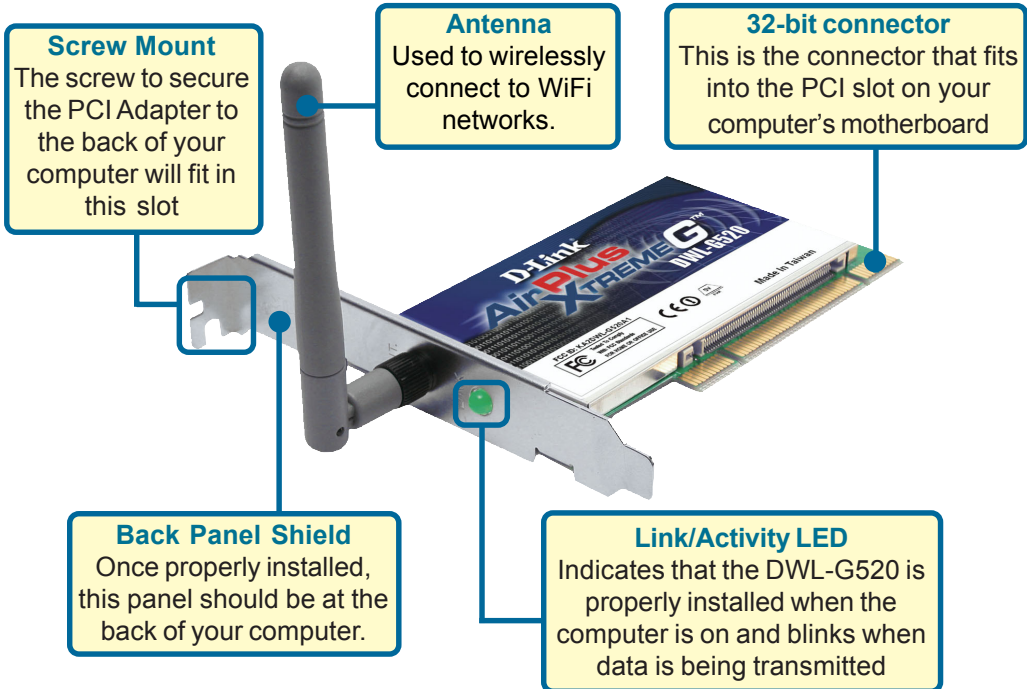
Installing the DWL-G520 Wireless PCI Adapter in Your Computer

- A. Make sure to turn off your computer and unplug the power cord.**
Remove the back cover of the computer.
- B. Install the DWL-G520 carefully** and firmly seat it into an available PCI slot (which is usually “white” or “cream” colored).



⚠ To avoid damage caused by static electricity, make sure to properly ground yourself by first touching a metal part of your computer to discharge any static electricity before working with the DWL-G520 Wireless PCI Adapter.

- C.** Secure the DWL-G520 back panel shield with a screw.
- D.** Replace the computer’s cover.
- E.** Place the computer back in its normal position.
- F.** Attach the DWL-G520’s antenna to the socket on the back panel shield.



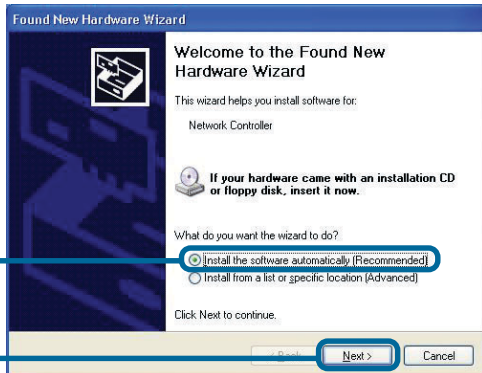
3

Restart Your Computer

When you restart your computer this **Found New Hardware Wizard (Windows XP)** screen will appear:

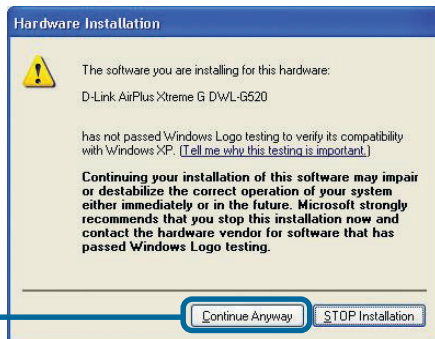
Select **Install the software automatically (Recommended)**

Click **Next**



Warning: For Windows XP: This **Hardware Installation** alert screen may appear after the desktop computer restarts.


Click **Continue Anyway** to finalize the installation



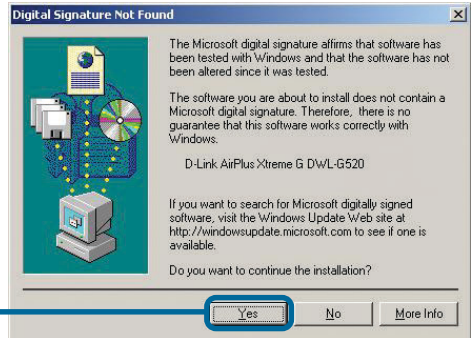
Click **Finish** to finalize the installation.




3 Continued...

 For Windows 2000, this **Digital Signature Not Found** screen may appear after your computer restarts.

Click **Yes** to finalize the installation.



 The D-Link driver software for this device is undergoing Windows Logo testing. Microsoft certification is pending.

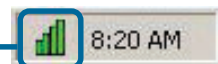
4 Your Installation is Complete!

After you've continued in Windows 2000, ME, or 98SE, the D-Link *AirExtreme* DWL-G520 **Configuration Utility** will automatically start and the utility icon will appear in the bottom right hand corner of the desktop screen (systray). **If this icon appears GREEN, then you have successfully installed the DWL-G520, are connected to a wireless network and are ready to communicate!**

If the utility icon does not appear, double-click the **shortcut icon** that has appeared on your desktop.



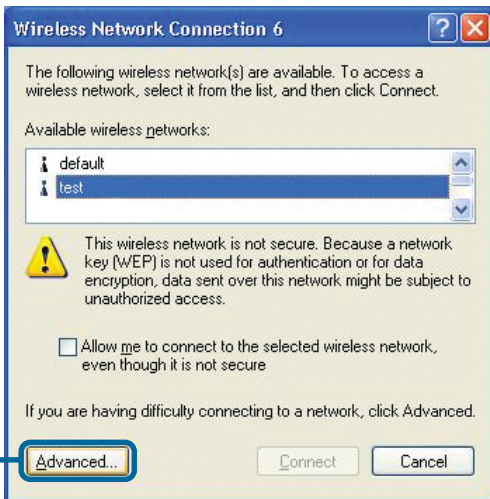
Double-click the **utility icon** to use the configuration utility.



Appendix

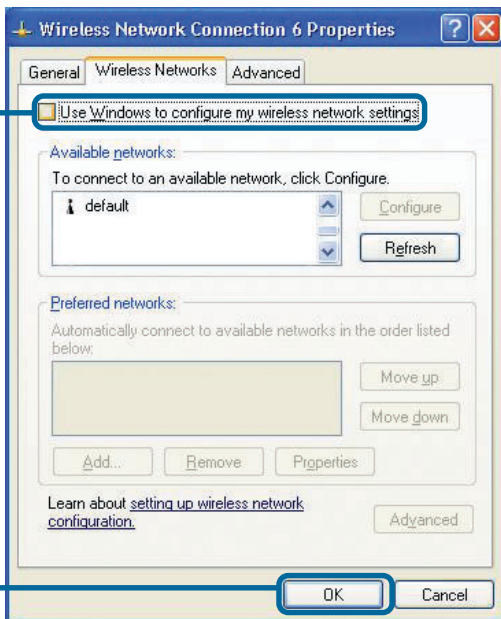
For Windows XP, if you wish to use the Xtreme G utility, please do the following steps.

Click the **XP Networking icon** to use the Zero Configuration Wireless Settings.



Click **Advanced**

Uncheck "Use Windows to configure my wireless network settings."



Click **OK**

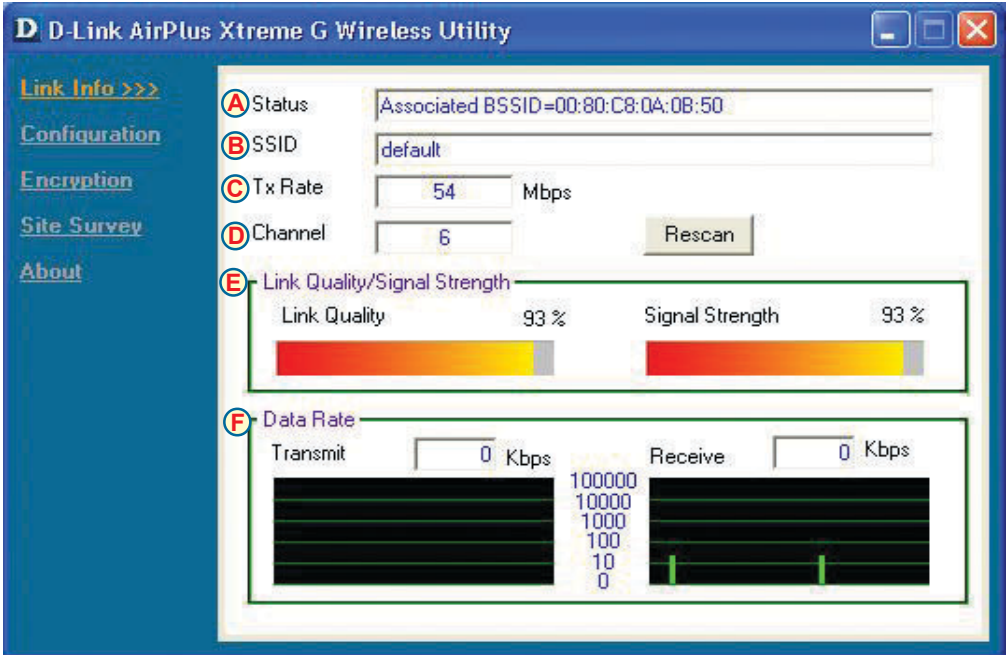
Appendix (Continued)

Using the Configuration Utility

A. Status: Displays the MAC Address of the Access Point that is associated with the DWL-G520.

B. SSID: The Service Set Identifier is the name assigned to the wireless network. The factory SSID setting is set to **default**.

C. TxRate: The default setting is **Auto**; meaning, TxRate settings are automatically determined by the DWL-G520 depending on the distance from the access point.



D. Channel: Displays the channel information. By default, the channel is set to 6. Please note that the DWL-G520 will automatically adjust channel depending on the Access Point.

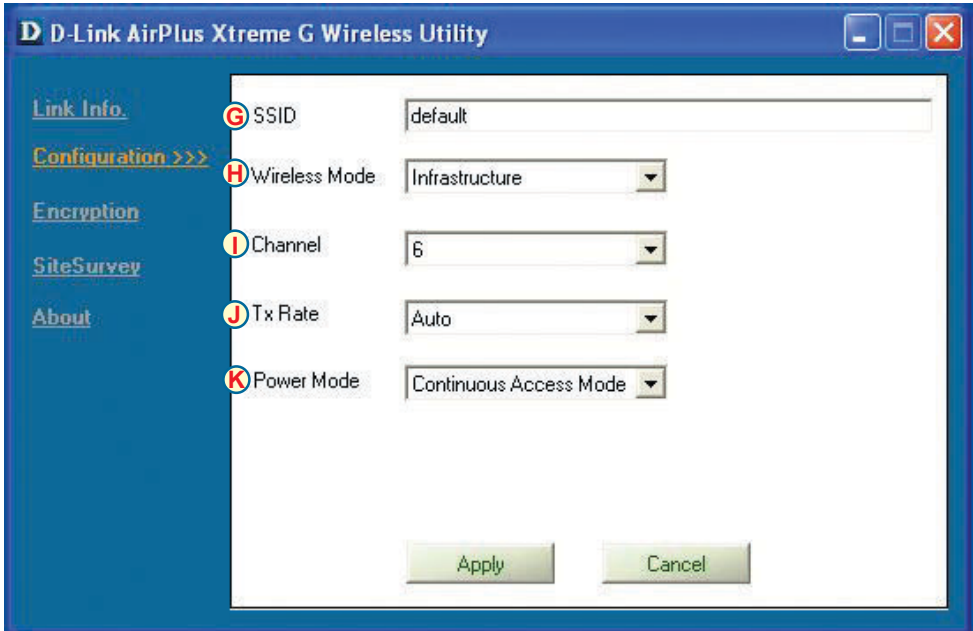
E. Link Quality / Signal Strength: Displays the Link Quality for the DWL-G520 wireless connection to the access point. The Signal Strength represents the wireless signal between the access point and the DWL-G520. The percentage coincides with the graphical bar.

F. Data Rate: Graphically displays the statistics of data transmitted and received.

G. SSID: The Service Set Identifier is the name assigned to the wireless network. The factory SSID setting is set to **default**. Make changes here to match the SSID on existing Wireless Router or Access Point.

H. Wireless Mode: The factory setting is set to **Infrastructure**. Ad-Hoc mode is used for peer-to-peer networking.

I. Channel: By default, the channel is set to **6**. Channel selection is automatically adjusted by the DWL-G520 depending on the channel setting of the access point selected for association. To change the channel settings, the **Wireless Mode** must be set to **Ad-hoc**.



J. TxRate: You can adjust the transmission rate to get the best signal possible depending on your usage and your environment.

K. Power Mode: By default, Power Mode is set to Continuous Access Mode. **Continuous Access Mode** — this default setting consumes the most power. **Maximum Power Save** — this setting consumes the least power. **Power Save** — this setting consumes a moderate amount of power.

IP Address Configuration

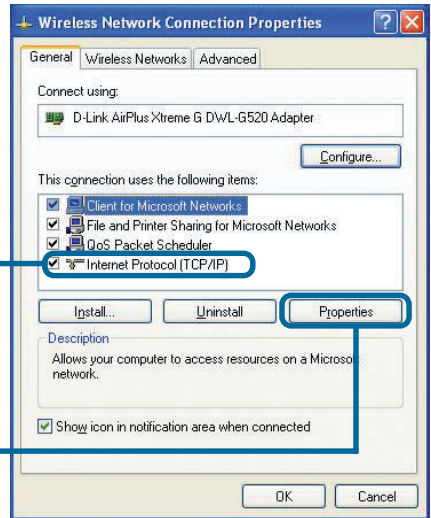
To connect to a network, **make sure the proper network settings are configured for DWL-G520.**

For Microsoft Windows XP:

Go to **Start > right click on My Network Places > select Properties > Double-click on the Network Connection** associated with the DWL-G520.

Click **Internet Protocol (TCP/IP)**

Click **Properties**



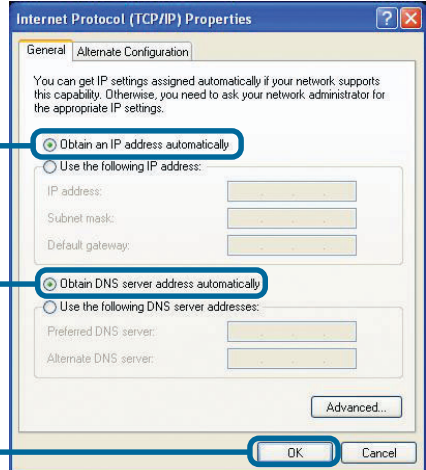
Dynamic IP Address setup

Used when a **DHCP server** is available on the local network. (i.e. Router)

Select **Obtain an IP address automatically** (if the Wireless Router or Access Point has DHCP server enabled)

Select **Obtain DNS server address automatically**

Click **OK**



Static IP Address setup

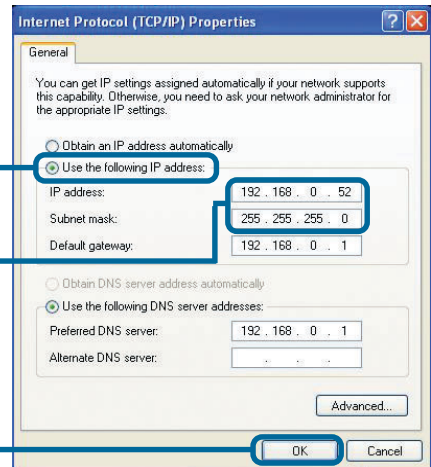
Used when a **DHCP server** is not available on the local network.

Select **Use the following IP address**

IP address: 192.168.0.52
Subnet mask: 255.255.255.0

Input a static IP address in the same range as the Wireless Router or Access Point.

Click **OK**

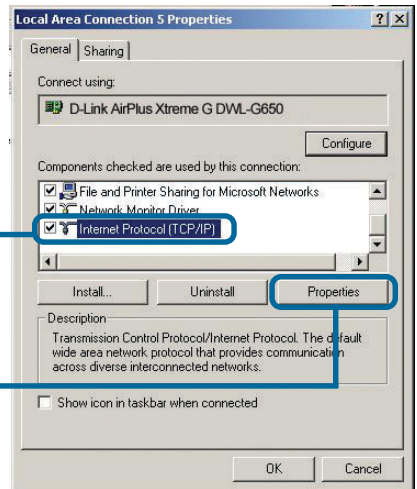


For Windows 2000 users:

Go to **Start > Settings > Network and Dial-up Connections** > Double-click on the **Local Area Connection** associated with the DWL-G520 > select **Properties**

Click **Internet Protocol (TCP/IP)**

Click **Properties**



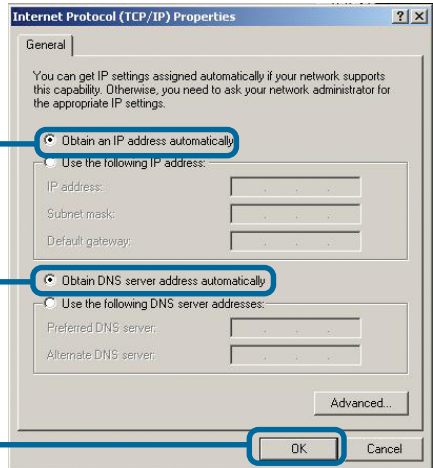
Dynamic IP Address setup

Used when a **DHCP server** is available on the local network. (i.e. Router)

Select **Obtain an IP address automatically** (if the Wireless Router or Access Point has DHCP server enabled)

Select **Obtain DNS server address automatically**

Click **OK**



Static IP Address setup

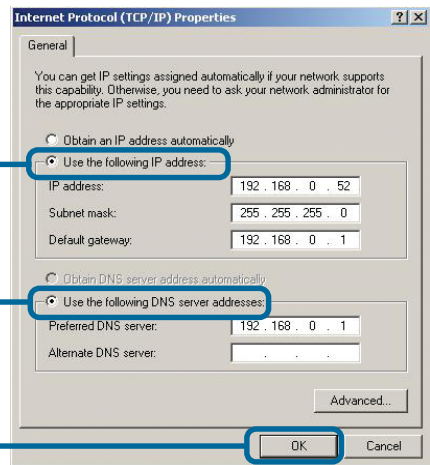
Used when a **DHCP server** is not available on the local network.

Select **Use the following IP address**

IP address: 192.168.0.52
Subnet mask: 255.255.255.0

Input a static IP address in the same range as the Wireless Router or Access Point.

Click **OK**



Technical Support

You can find software updates and user documentation on the D-Link website.

D-Link provides free technical support for customers within the U.K

U.K. customers can contact D-Link technical support through our website, or by phone.

Tech Support for customers within the U.K:

D-Link Technical Support over the Telephone:

(Free Phone 0800 917 5063)

Mon-Fri, 8.00am to 8.00pm.

D-Link Technical Support over the Internet:

<http://www.dlink.co.uk>

<ftp://ftp.dlink.co.uk>

D-Link®
Building Networks for People