

# QUICK INSTALL GUIDE

DPR-1260

VERSION 1.3



**D-Link**<sup>®</sup>

**WIRELESS**

---

# System Requirements

- 10/100 Fast Ethernet Wired or 802.11b/g Wireless Network
- Printer with USB Port\*
- Computer with:
  - Windows® XP (SP2) or Windows® 2000 (SP4)
  - Internet Explorer 6.0 or Mozilla Firefox 1.5 or higher
  - CD-ROM Drive
  - Network Interface Card

\* For a list of compatible printers, visit <http://support.dlink.com>.

## Package Contents



D-Link DPR-1260  
Multi-Function Print Server



Manual and Software on CD



CAT5 Ethernet Cable



Power Adapter

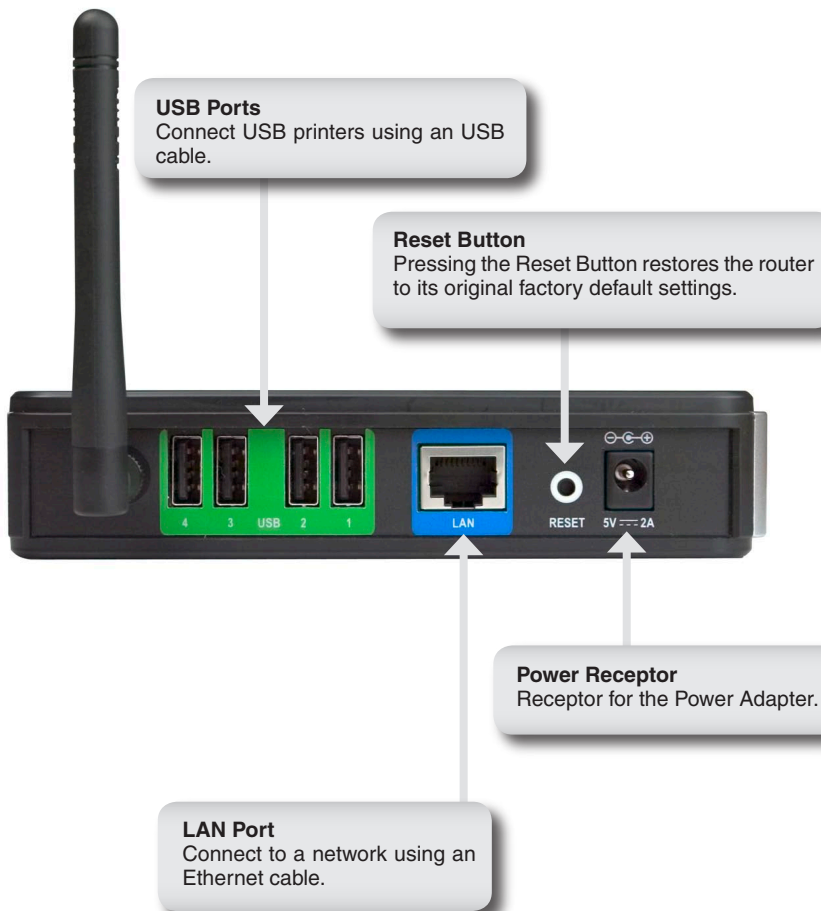
**Note:** Using a power supply with a different voltage rating than the one included with the DPR-1260 will cause damage and void the warranty for this product.

**If any of the above items are missing, please contact your reseller.**

---

# Hardware Overview

## Connections



---

# Hardware Overview

## LEDs

### LAN LED

A solid light indicates connection on the LAN port. This LED blinks during data transmission.



### Power LED

A solid light indicates a proper connection to the power supply.

### USB LEDs (1-4)

A solid light indicates connectivity to an USB printer or scanner.

### WLAN LED

A solid light indicates that the wireless segment is ready. This LED blinks during wireless data transmission.

---

# Installation

Connect an Ethernet cable to the Ethernet connector located on the Print Server's back panel and attach it to the network.

**Note:** *It is required that an Ethernet cable is used during initial setup. Once your wireless configuration is set, you may disconnect the Ethernet cable and begin communicating wirelessly with your DPR-1260.*

Attach the external power supply to the DC power input connector located on the Print Server's bottom panel and connect it to a power outlet or power strip. Connect your USB printer to an available USB port on your print server.

The IP address of your print server will be automatically assigned by your router. To access the print server's web-based configuration interface:

## Windows XP users:

Double-click on the **My Network Places** icon on your desktop. Your print server will be displayed as "DPR-1260: dlink-xxxxxx" (where xxxxxx is the last 6 characters of your print server's MAC address). If you do not see the print server or have UPnP enabled, please refer to the **Installation > UPnP** section in the manual that is on the D-Link CD.

## Windows 2000 users:

You will need to write down the MAC address located on the bottom of the print server (E.G. 00-15-E9-F9-6B-BC).



Open a web browser and enter the following:

**http://dlink-XXXXXX**



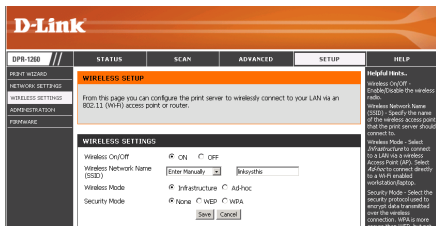
**XXXXXX** = the last six characters of your MAC address.

## Wireless Settings

If you want to connect to a wireless network, click on the **Setup** tab and then click **Wireless Settings** on the left side.

You will be asked to enter a password. Leave the box empty if you have not set up a password.

Set the *Wireless on/off* to **On**. If you want to disable the wireless feature, select **Off**.



Select the Wireless Network Name (SSID) from the drop-down menu. If you do not see your network in the list, select **Enter Manually** and enter the SSID.

If you are connecting to an access point or wireless router, select **Infrastructure**. If you are connecting directly to a computer with a wireless adapter, click **Ad-Hoc**.

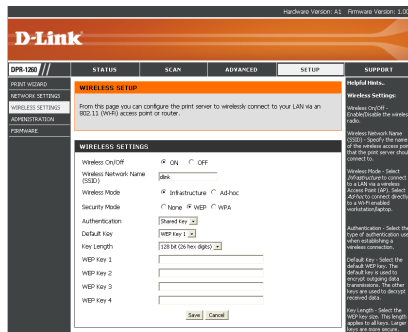
Select **None** (to use connect to an unsecure network), **WEP**, or **WPA**.

Click **Save** to update your settings.

# WEP Encryption

It is recommended to enable encryption on your wireless router before your wireless print server. Please establish wireless connectivity before enabling encryption. Your wireless signal may degrade when enabling encryption due to the added overhead.

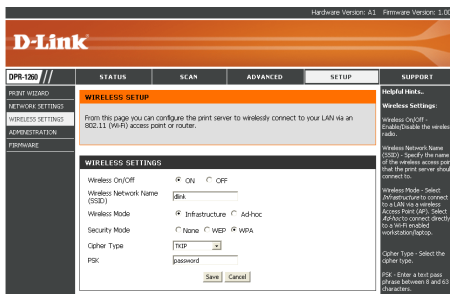
1. Log into the web-based configuration (refer to page 5). Click on **Setup** and then **Wireless Settings** on the left side.
2. Next to *Security Mode*, select **WEP**.
3. Next to *Authentication*, select **Shared Key**.
4. Select either **64-bit** or **128-bit** encryption from the drop-down menu next to *WEP Encryption*.
5. Next to *Key 1*, enter a WEP key that you create. Make sure you enter this key exactly on all your wireless devices. You may enter up to 4 different keys.
6. Click **Save Settings** to save your settings.



# WPA Encryption

It is recommended to enable encryption on your wireless router before your wireless network adapters. Please establish wireless connectivity before enabling encryption. Your wireless signal may degrade when enabling encryption due to the added overhead.

1. Log into the web-based configuration (refer to page 5).
2. Next to *Security Mode*, select **WPA**.
3. Next to *Cipher Mode*, select **TKIP**, **AES**, or **TKIP and AES**.



4. Next to *PSK*, enter a key (passphrase). The key is an alpha-numeric password between 8 and 63 characters long. The password can include symbols (!?\*&\_) and spaces. Make sure you enter this key exactly the same as on your wireless router or access point.
5. Click **Save** to save your settings.



# D-Link Setup Wizard

Once you have successfully configured the wireless settings, you are now ready to setup your network printer. You can disconnect the Ethernet cable and configure the printer from a wireless connection.

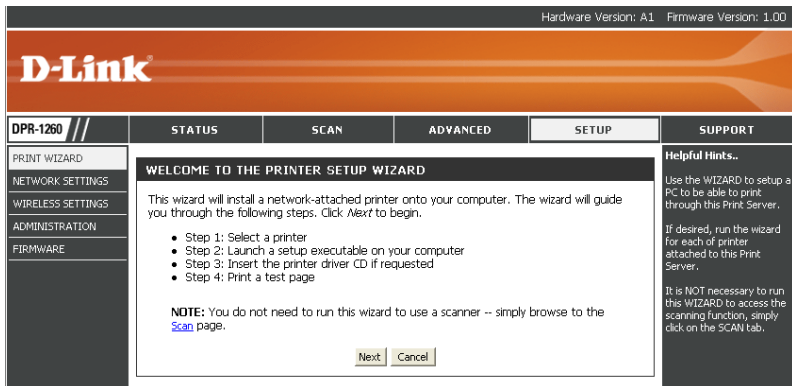
**Note:** You will need to run this wizard from each computer that wishes to use the printer.

To access the configuration utility, double-click on the **My Network Places** icon on your desktop and then double-click on “DPR-1260: dlink-xxxxxx”.

Windows® 2000 users can open a web browser and enter **http://dlink-xxxxxx** (where xxxxxx is the last 6 characters of the print server’s MAC address).

If you get a **Page Cannot be Displayed** error, please refer to the **Troubleshooting** section of the manual for assistance.

From the Status screen, click on the **Setup** tab, and then click **Next** to start the wizard.



Hardware Version: A1 Firmware Version: 1.00

## D-Link

**DPR-1260 //** STATUS SCAN ADVANCED SETUP SUPPORT

PRINT WIZARD NETWORK SETTINGS WIRELESS SETTINGS ADMINISTRATION FIRMWARE

### WELCOME TO THE PRINTER SETUP WIZARD

This wizard will install a network-attached printer onto your computer. The wizard will guide you through the following steps. Click **Next** to begin.

- Step 1: Select a printer
- Step 2: Launch a setup executable on your computer
- Step 3: Insert the printer driver CD if requested
- Step 4: Print a test page

**NOTE:** You do not need to run this wizard to use a scanner -- simply browse to the [Scan](#) page.

Next Cancel

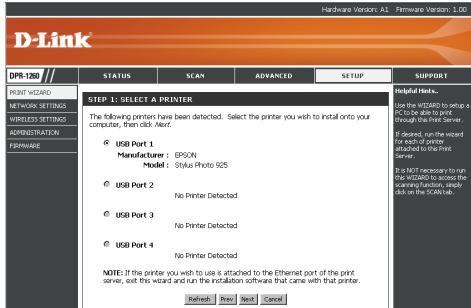
#### Helpful Hints...

Use the WIZARD to setup a PC to be able to print through this Print Server.

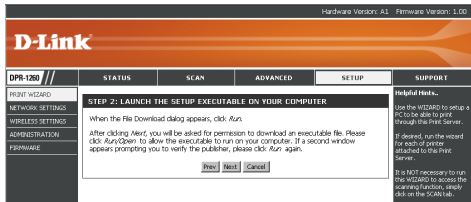
If desired, run the wizard for each of printer attached to this Print Server.

It is NOT necessary to run this WIZARD to access the scanning function, simply click on the SCAN tab.

Click the radio button next to the printer you want to configure. Click **Next** to continue.

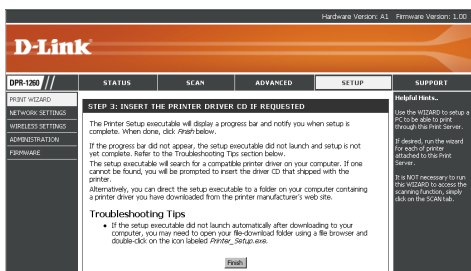


Click **Next** to continue.



You may need to insert your printer driver CD to load the drivers to your computer.

If the autorun screen appears when inserting your printer driver CD, click cancel or close.



Click **Finish** to complete the setup wizard.

# Scan

If you have a compatible multi-function printer with a scanner, you may scan using the print server's web-based utility.

1. Select **Scanner Bed** (most common) or **Automatic Document Feeder (ADF)**. If you select ADF, select the document size from the drop-down menu.
2. Select the size, resolution, color copy, and file format.
3. Click the **Scan** button to scan the document.

Hardware Version: A1 Firmware Version: 1.00

**D-Link**

DPR-1260 // STATUS SCAN ADVANCED SETUP SUPPORT

1 Select the location of the document to scan. Press #Preview Scan to get a quick preview of the scanner bed contents. If you select ADF, also specify the document size.

**Scan Device**

**No Scanner Detected**

Scanner Bed  Automatic Document Feeder (ADF)

Document Size | Letter

2 Click and drag on the scanner bed preview window to select the area you wish to scan. Make any adjustments to resolution, color, and file format. Then press Scan.

Scan Area	Resolution	Example Use
Size	<input type="radio"/> Highest	Enlarged or cropped photo print
<input checked="" type="radio"/> Full Bed <input type="radio"/> Letter	<input type="radio"/> High	Photo print or slide presentation
<input type="radio"/> Executive <input type="radio"/> A4	<input type="radio"/> Medium	Web page image
<input type="radio"/> Custom	<input type="radio"/> Low	E-mail attachment
3.5x11.7 inches	<b>Copy Color</b>	
Offset	<input checked="" type="radio"/> Color	
3.0 inches	<input type="radio"/> Black & White	
<input type="radio"/> inches <input type="radio"/> mm	<b>File Format</b>	<b>Example Use</b>
<input type="button" value="Scan"/>	<input checked="" type="radio"/> JPEG	Scan bed or single-page ADF scan
	<input type="radio"/> PDF	Multi-page ADF scan

Preview Window

**WIRELESS**

For more information regarding your scanner, please refer to the scanner's documentation.

Unfortunately not all scanners will operate or be detected when connected to the D-Link print server. Please visit <http://support.dlink.com> for an updated compatibility list.

---

# Technical Support

D-Link's website contains the latest user documentation and software updates for D-Link products.

U.S. and Canadian customers can contact D-Link Technical Support through our website or by phone.

## United States

### Telephone

(877) 453-5465

Twenty four hours a day, seven days a week.

### World Wide Web

<http://support.dlink.com>

## Canada

### Telephone

(800) 361-5265

Monday through Friday, 7:30am to 9:00pm EST.

### World Wide Web

<http://support.dlink.ca>



Version 1.3  
January 23, 2007

Copyright ©2006-2007 D-Link Corporation/D-Link Systems, Inc. All rights reserved. D-Link and the D-Link logo are registered trademarks of D-Link Corporation or its subsidiaries in the United States and other countries. Other trademarks are the property of their respective owners. Maximum wireless signal rate based on IEEE Standard 802.11g specifications. Actual data throughput will vary. Network conditions and environmental factors, including volume of network traffic, building materials and construction, and network overhead lower actual data throughput rate. Product specifications, size and shape are subject to change without notice, and actual product appearance may differ from that depicted on the packaging. Visit [www.dlink.com](http://www.dlink.com) for more details.