

QUICK INSTALL GUIDE

DCS-2120

VERSION 1.0



D-Link[®]

WIRELESS

System Requirements

- Windows® 2000 or XP
- At least 128MB of memory (256MB recommended)
- A wireless (802.11b or 802.11g) or Ethernet network
- Internet Explorer 6.x or higher Internet Web Browser
- VGA card resolution: 800x600 or above
- CPU: Pentium 4 1.3GHz or above processor (Pentium 4 2.4GHz processor or higher with 512MB memory and a 32MB video card is required for multiple camera viewing and recording in IP surveillance program)

Note: *If using multiple cameras for viewing/recording, the minimum requirements are a 2GHz or above CPU with 512MB memory and a 32MB video card.*

Package Contents



D-Link DCS-2120
Wireless Internet Camera
with 3G Mobile Video Support



Manual and Software on CD



Antenna



CAT5 Ethernet Cable



Power Adapter

If any of the above items are missing, please contact your reseller.

Hardware Overview

Antenna Connector

One antenna is included with the DCS-2120. It is fastened onto the antenna connector located on the side panel, which is used to provide a connection with a wireless network.



LED

As soon as the power adapter is connected to the camera, the power LED will flash red and blue several times, indicating that the DCS-2120 is conducting a self-test. Upon passing the self-test, the LED will turn blue indicating a good connection to the Ethernet port, or red indicating that no connection has been made.

DC Power Connector

The DC Power input connector is labeled DC 5V with a single jack socket to supply power to the DCS-2120.



Ethernet Cable Connector

The DCS-2120 features an RJ-45 connector for connections to 10Base-T Ethernet cabling or 100Base-TX Fast Ethernet cabling. The port supports the NWay protocol, allowing the DCS-2120 to automatically detect or negotiate the transmission speed of the network.

Reset Button

Reset is initiated when the reset button is pressed once and the Power LED begins to flash. Factory Reset will be initiated when the reset button is pressed continuously for 30 seconds. Release the reset button and the Power LED will begin to flash, indicating that the DCS-2120's settings are restored to factory settings.



Hardware Installation

Connect an Ethernet cable to the Ethernet connector located on the Internet Camera's bottom panel and attach it to the network.



Note: It is required that an Ethernet cable is used during initial setup. Once your wireless configuration is set, you may disconnect the Ethernet cable and begin communicating wirelessly with your DCS-2120.

Attach the external power supply to the DC power input connector located on the Internet Camera's bottom panel (labeled DC 5V 2A) and connect it to an AC power outlet.



The LED will flash red and blue when you first power on the unit. The LED will not turn blue until the camera has received a network IP address.

Software Installation

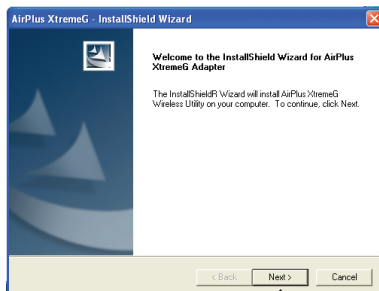
Turn on the computer and Insert the D-Link DCS-2120 Driver CD into the CD-ROM drive. The step-by-step instructions are shown in Windows® XP, and are similar in other Windows® operating systems.

Click **Installation Wizard**



If the CD Autorun function does not automatically start on your computer, click Windows® Start > Run. In the Run command box type "**D:\DCS2120.exe**", where D: represents the drive letter of your CD-ROM. If it does start, proceed to the next screen.

The *InstallShield Wizard* window will appear.

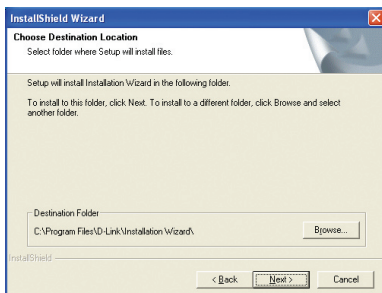


Click **Next**

By default the program will be installed to: *C:\Program Files\D-Link\Installation Wizard*, where C: represents the drive letter of your hard drive.

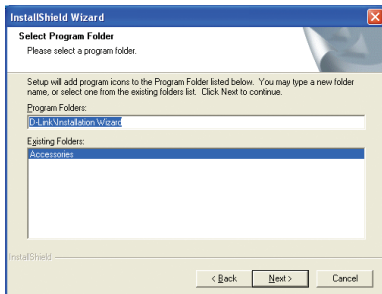
To install to a different location, click **Browse** and specify the location.

Click **Next**



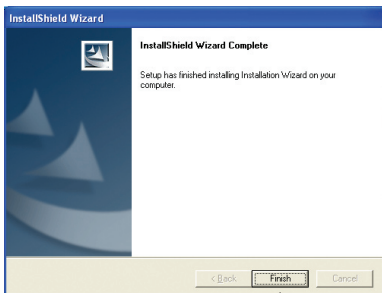
Specify a Program Folder.

Click **Next**



Setup is complete.

Click **Finish**



Configuration

This section will show you how to configure your new D-Link Wireless Internet Camera using the D-Link Installation Wizard.

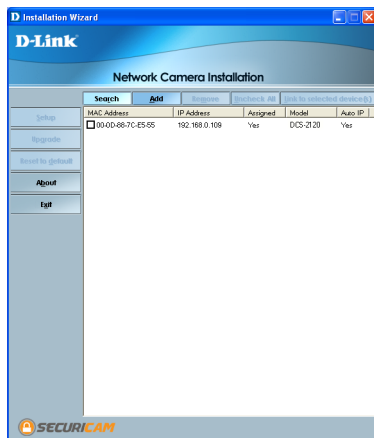
D-Link Installation Wizard

The D-Link DCS-2120 uses the Installation Wizard as the management software. The wizard provides the user an easy interface to change any settings related to the Wireless Internet Camera. Clicking on the Installation Wizard icon will start the wizard.



The Installation Wizard will appear and show the MAC address of the DCS-2120 and an IP Address. If you have a DHCP* server on your network, there will be a valid IP Address displayed here, indicated by a “Yes” under the assigned column.

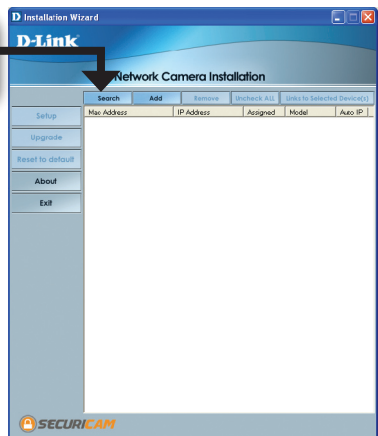
*A DHCP server is a device that supplies IP Addresses to its clients, which are on the same network.



If the Installation Wizard does not detect any devices, you will need to reset the camera. Reset is initiated when the reset button is pressed once and the Power LED begins to flash. Factory Reset will be initiated when the reset button is pressed continuously for 30 seconds. Release the reset button and the Power LED will begin to flash, indicating that the DCS-2120's settings are restored to factory settings.

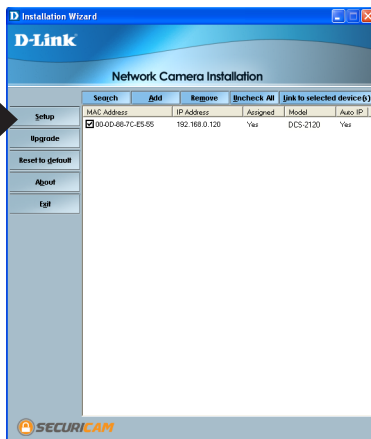


Click **Search** to refresh the list of cameras.



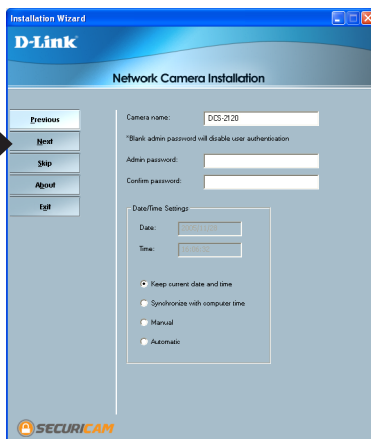
Once the camera appears, select the camera by placing a check mark in the box.

Click **Setup**



Enter an administrative password in the Admin password and Confirm password fields.

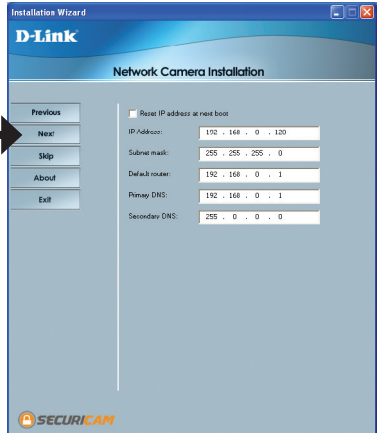
Click **Next**



Note: For details on the Date/Time Settings, please refer to the Manual on the CD-ROM.

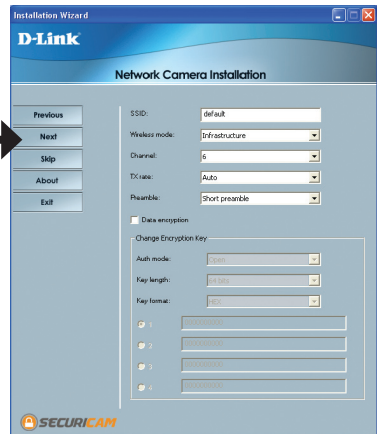
Uncheck the box **Reset IP address at next boot**.

Click Next

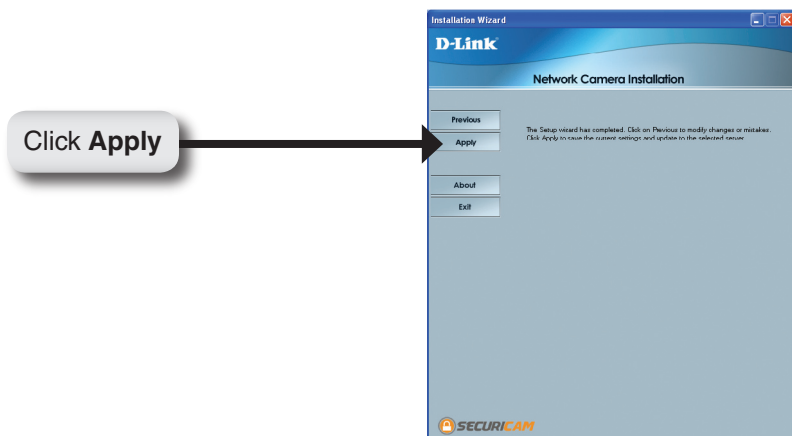


Note: If you need to modify the IP Settings, please refer to the Manual on the CD-ROM.

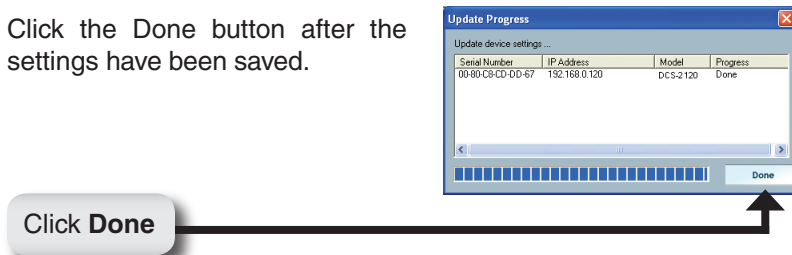
Click Next



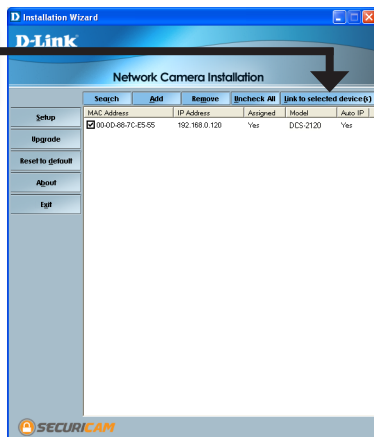
Users can configure the Wireless Network Settings for the camera, by entering the SSID and selecting the Wireless Mode, Channel, TX Rate, and Preamble.



Click the Done button after the settings have been saved.



Click the **Link to Selected Device(s)** button.



After you click the button **Link to Selected Device(s)**, the Installation Wizard will automatically open your Web browser to the IP address of the DCS-2120, in this example it is: <http://192.168.0.120>. Your DCS-2120 may have a different IP Address.

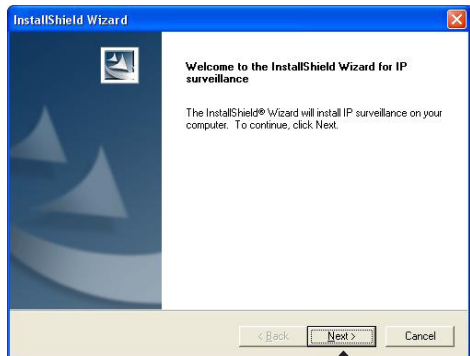
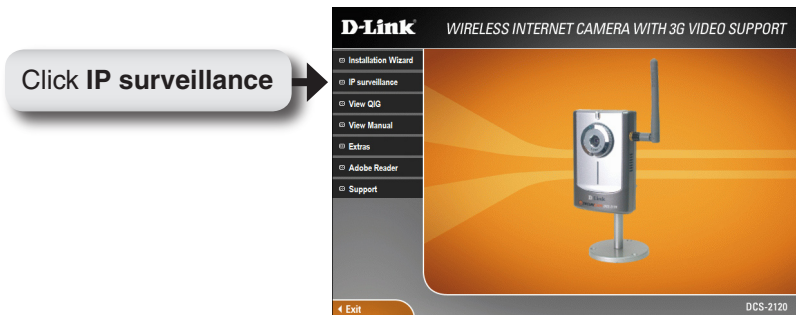


Your Basic Installation is Complete!

IP surveillance Installation

IP surveillance software is included for the administrator to manage up to 16 DCS-2120s remotely. The administrator can also record the video to hard drive and configure advanced settings. IP surveillance is a complete management tool and includes all configurable settings.

Insert the CD-ROM into the CD-ROM drive. A menu screen will appear as shown below.



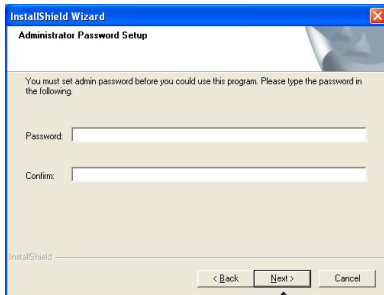


Click Yes

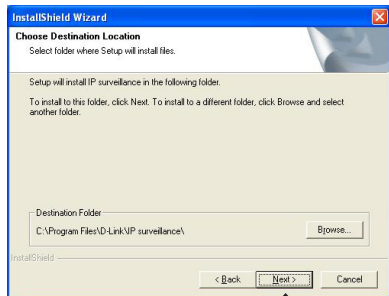


Click Next

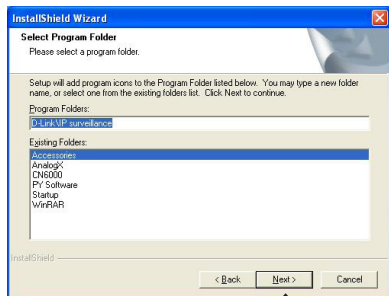
Enter an Admin Password for the IP surveillance program.



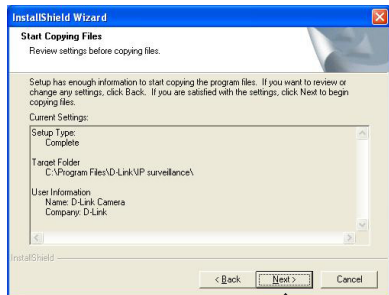
Click Next



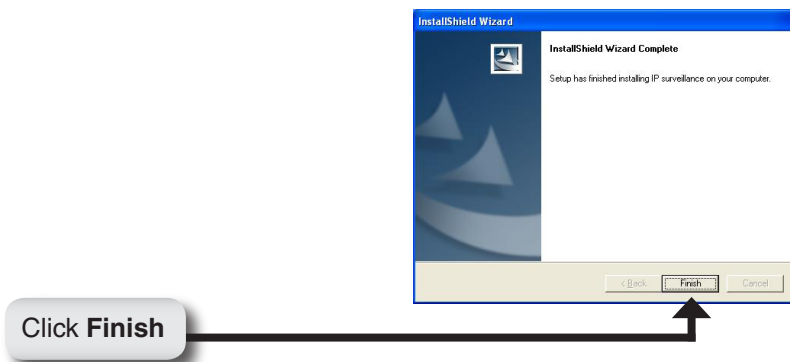
Click Next



Click Next



Click Next

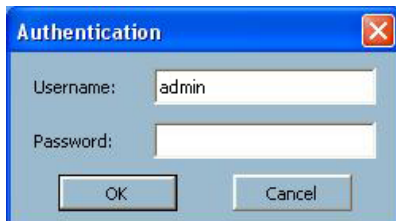


After successfully installing IP surveillance, the application program for the DCS-2120 is automatically installed to \Program Files\D-Link\IP surveillance Directory.

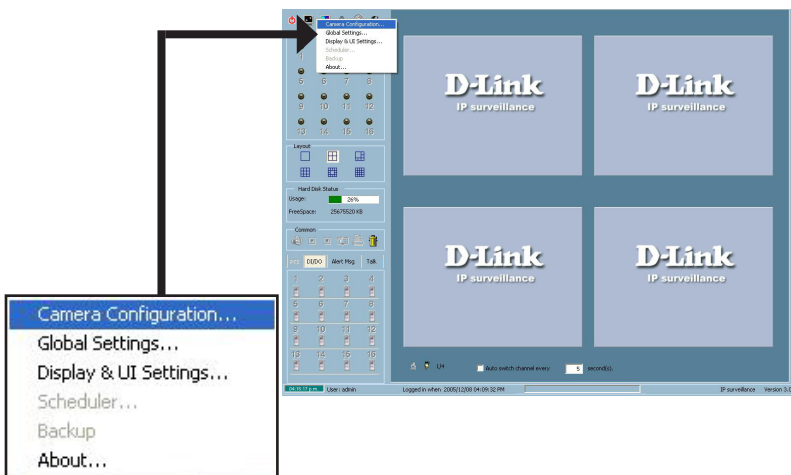
Add a Camera

To start IP surveillance, click on Windows® Start > Programs > D-Link > IP surveillance > Monitor.

Once the Authentication screen appears, enter “admin” as your Username and the Password that was entered during the installation of IP surveillance.

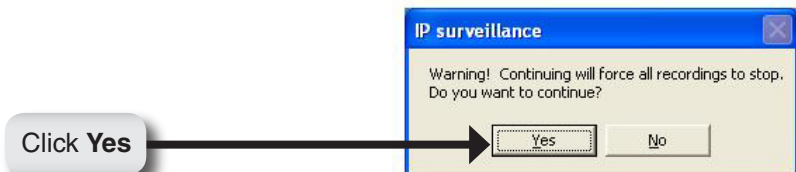


The IP surveillance Monitor screen will appear as shown below. On the menu to the left, click the Configuration button and select **Camera Configuration**.

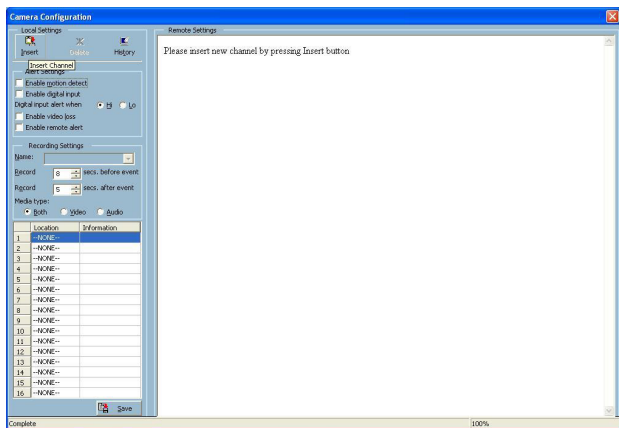


Add a Camera

After selecting Camera Configuration, a warning message will appear and all cameras will stop recording. Click Yes to continue.

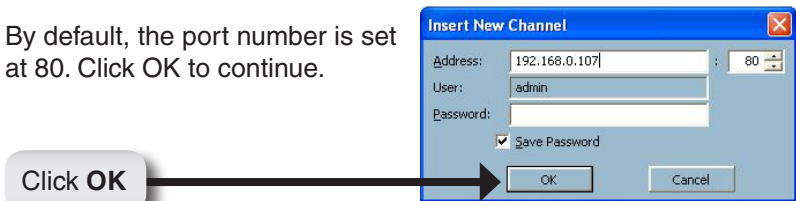


Click the **Insert Channel** button located in the upper left corner of the Camera Configuration screen.

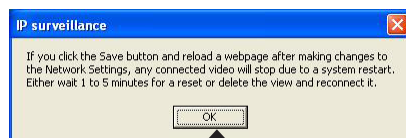
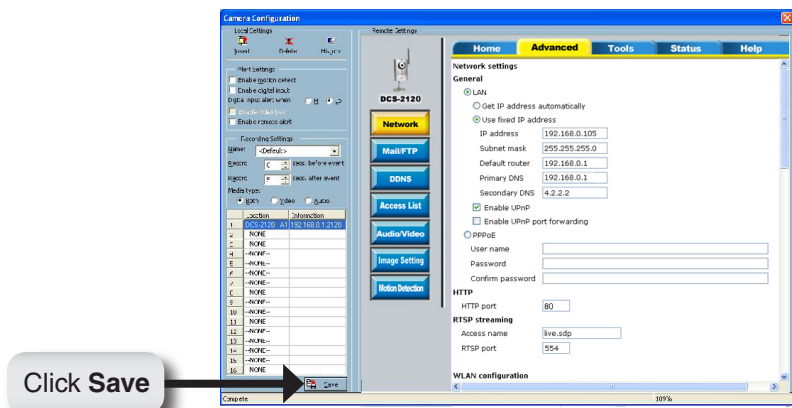


Enter the IP address of the camera you would like to add.

By default, the port number is set at 80. Click OK to continue.



When the camera screen appears to the right of the Configuration menu screen, this means that a connection has been established. Click the **Save** button at the bottom of the Configuration menu screen.



Your IP surveillance Installation is Complete!

Notes

Notes

Notes

Technical Support

D-Link's website contains the latest user documentation and software updates for D-Link products.

U.S. and Canadian customers can contact D-Link Technical Support through our website or by phone.

United States

Telephone

(877) 453-5465

Twenty four hours a day, seven days a week.

World Wide Web

<http://support.dlink.com>

E-mail

support@dlink.com

Canada

Telephone

(800) 361-5265

Monday through Friday, 7:30am to 9:00pm EST.

World Wide Web

<http://support.dlink.ca>

E-mail

support@dlink.ca



Version 1.0
Revised 03/13/2006

Copyright ©2006 D-Link Corporation/D-Link Systems, Inc. All rights reserved. D-Link, the D-Link logo are registered trademarks of D-Link Corporation or its subsidiaries in the United States and other countries. Other trademarks are the property of their respective owners. Maximum wireless signal rate based on IEEE Standard 802.11g specifications. Actual data throughput will vary. Network conditions and environmental factors, including volume of network traffic, building materials and construction, and network overhead lower actual data throughput rate. Product specifications, size and shape are subject to change without notice, and actual product appearance may differ from that depicted on the packaging. Visit www.dlink.com for more details.