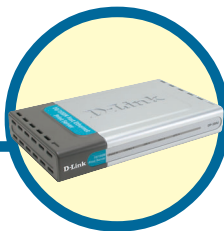


# D-Link Quick Installation Guide

This product can be setup using any current web browser, i.e., Internet Explorer 6 or Netscape Navigator 7.0



**DP-300U**  
D-Link Fast Ethernet  
Print Server

## Before You Begin

You will need an Ethernet-enabled device, such as a laptop or desktop computer and a USB or parallel-port printer that will connect to the DP-300U.

**Important: TURN OFF the power to the printer before installing the DP-300U.**

## Check Your Package Contents



**DP-300U Multi-Port Print Server**



**CD-ROM (Software, Manual and Warranty)**



**5V DC 2.5A Power Adapter**



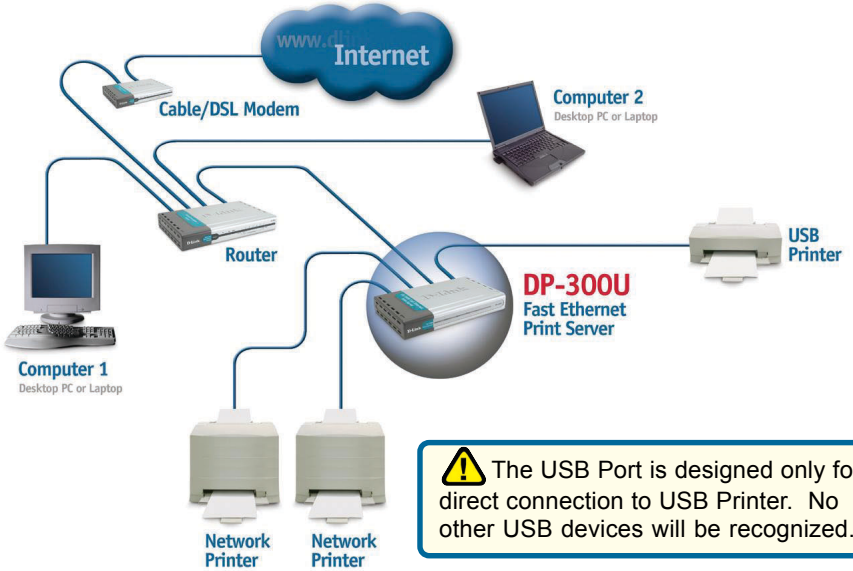
Using a power supply with a different voltage rating will damage this product and void its warranty.

If any of the above items are missing, please contact your reseller.

# 1

## Connecting The DP-300U To Your Network

First, insert one end of a straight-through CAT5 Ethernet RJ-45 cable into the “**Network Port**” (shown below.) Connect the other end of the cable to the LAN port of the gateway or switch. *Note: Do not connect the power cord to the DP-300U until you are advised to do so*

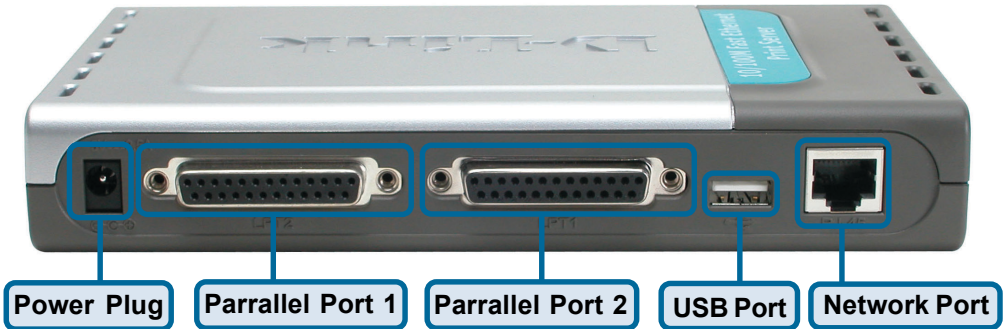


**!** The USB Port is designed only for direct connection to USB Printer. No other USB devices will be recognized.

Next, make sure that the Printer is turned **OFF**.

Using the USB cable or printer cable, connect one end of the cable to the USB or parallel port of the DP-300U (shown below) and the other end to the USB or parallel port of the printer.

Turn **ON** the printer.



Then, plug one end of the power adapter into the DP-300U and the other end into your electric outlet.

The DP-300U will turn on and begin a self-test.

**!** For Mac OS printing, please refer to users manual located on CD-ROM.

# 2

## Setting up your DP-300U for network printing in Windows XP

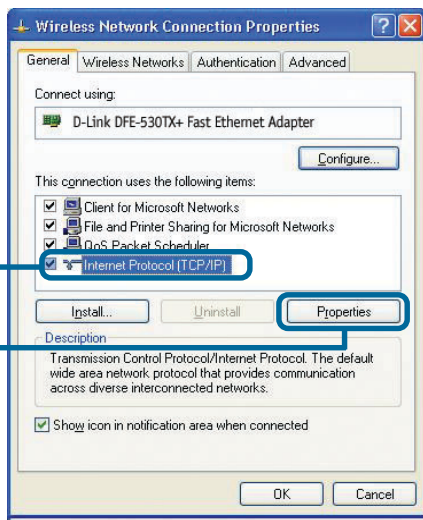
For additional Windows operating system setup or information on the web-management interface, refer to the manual located on the CD-ROM.

The factory default IP address of the DP-300U is 192.168.0.10. In order to print to the printer(s) through the DP-300U, the DP-300U must have the same IP network settings as your network. IP address can be assigned manually or automatically by DHCP, BOOTP or RARP. To access the print server's web configuration, manually assign an IP address on one of the PC's on your network to the same subnet as the print server.

Go to **Start > right click on My Network Places > select Properties > Double-click on the Network Connection** associated with your Network Adapter.

Click **Internet Protocol (TCP/IP)**

Click **Properties**

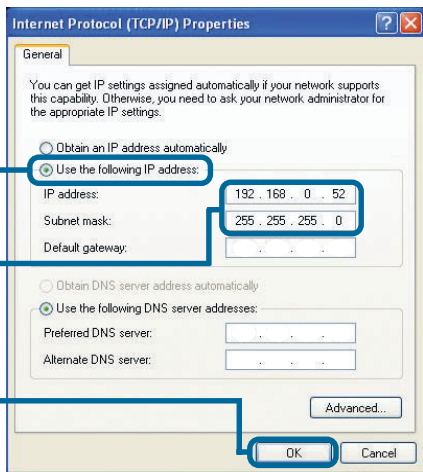


Input a static IP address in the same range as the print server.

Select **Use the following IP address**

IP address: **192.168.0.52**  
Subnet mask: **255.255.255.0**

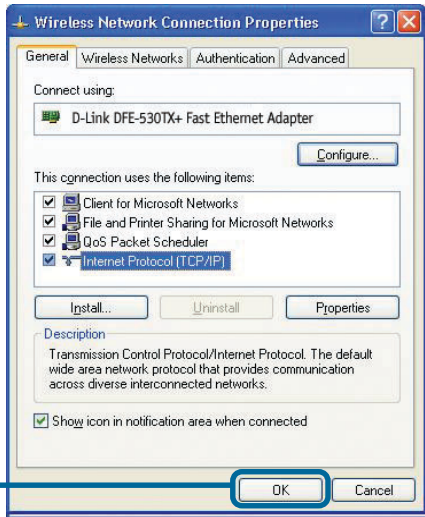
Click **OK**



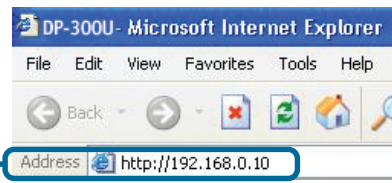
# 2

## Setting up your DP-300U for network printing in Windows XP (continued)

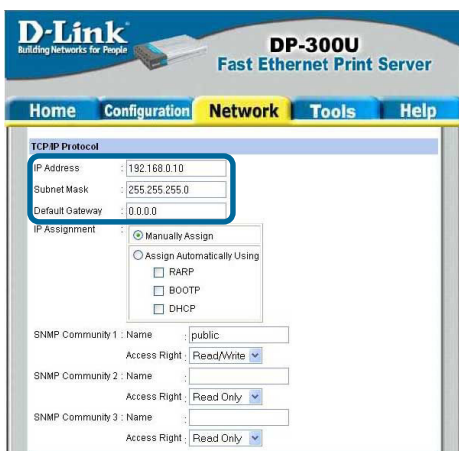
Click **OK** to apply IP address settings.



Using your web browser enter the IP address of the DP-300U. By default the IP address is set to **192.168.0.10**



The IP address of the DP-300U can be modified on the **Network** tab of the web configuration menu.



The following instructions use the print server's default IP address as an example. Make the appropriate changes if you modify the DP-300Us IP address.

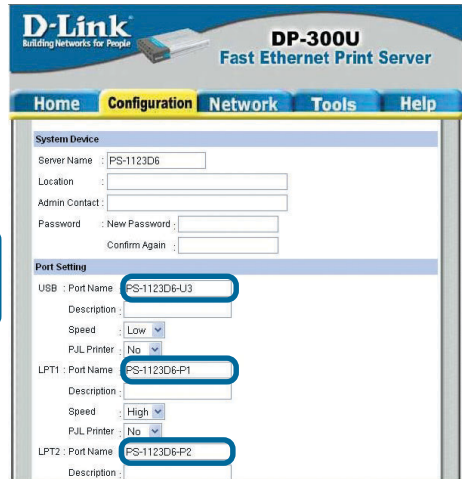
# 2

## Setting up your DP-300U for network printing in Windows XP (continued)

Click on the **Configure** tab to view the current **Port Settings**.

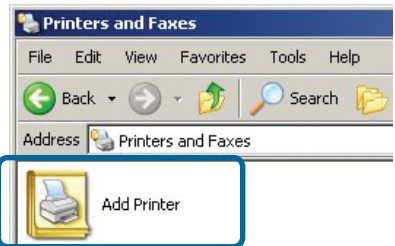


Write down on a piece of paper the Port name that you wish to use.

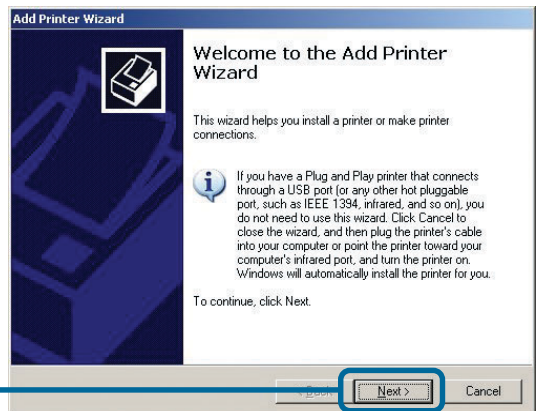


**For Windows XP:**  
Go to **Start>Printers and Faxes>Add a Printer** or **Go to Start>Control Panel> Printers and Faxes**

Double-click on the **“Add Printer”** icon



Click **Next**

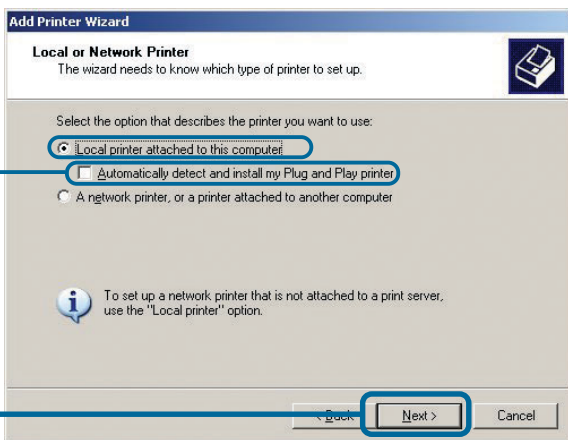


# 2

## Setting up your DP-300U for network printing in Windows XP (continued)

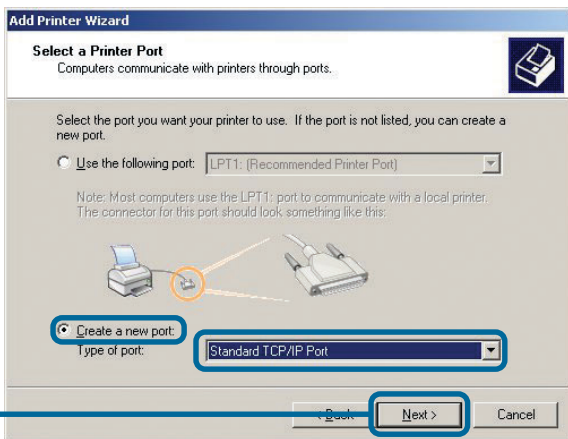
Select “**Local Printer.**”

Please make sure to **deselect** **Automatically detect and install my Plug and Play printer.**

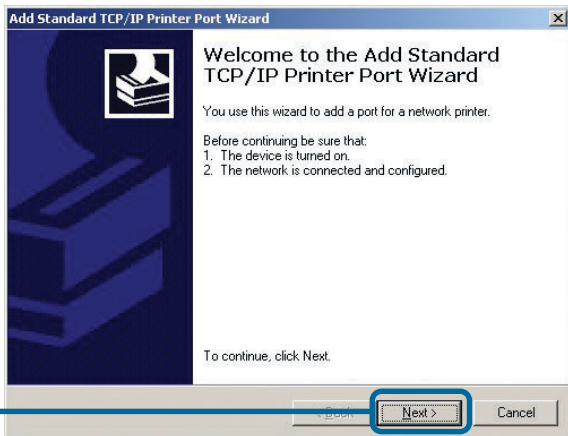


Click **Next**

Select “**Create a new port.**”  
At the pull-down menu, high-light “**Standard TCP/IP Port.**”



Click **Next**




Click **Next**

# 2

## Setting up your DP-300U for network printing in Windows XP (continued)

Type in the IP address of the print server. (i.e. 192.168.0.10)  
The port name will automatically be filled in.

Click **Next**

 This may take a few seconds

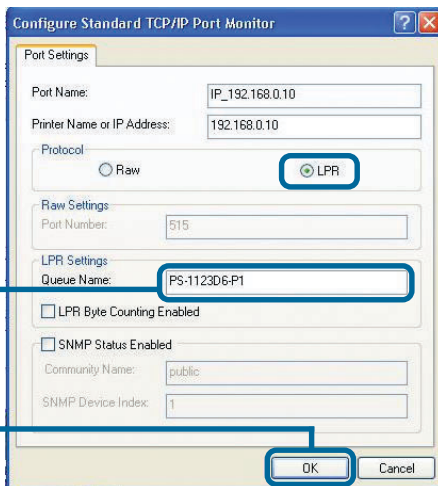
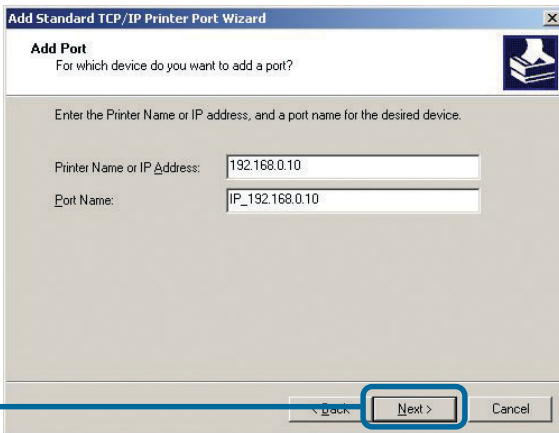
Select **“Custom”**  
Then click on **Settings**.

Click **Settings**

Select **“LPR”**

Input the port name of the port being used by the printer

Click **OK**

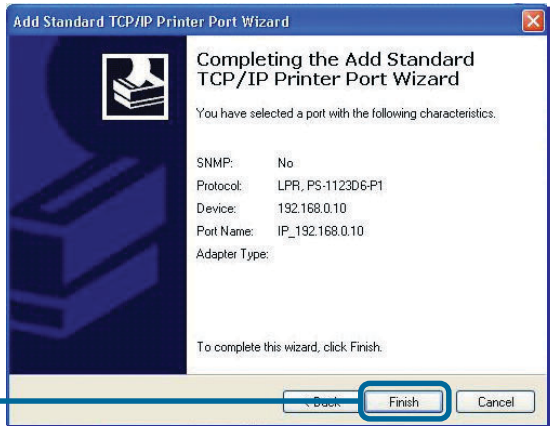


# 2

## Setting up your DP-300U for network printing in Windows XP (continued)



Click **Next**

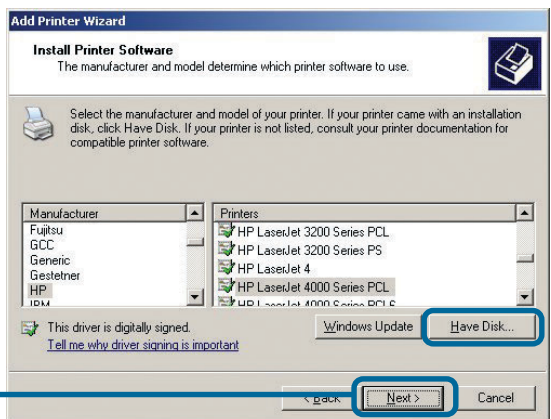


Click **Finish**

In this window, scroll down to find your printer. (If it is not listed, insert the driver CD or diskette that came with your printer.)

Click on **“Have Disk.”**

Then, scroll down and highlight the printer.



Click **Next**

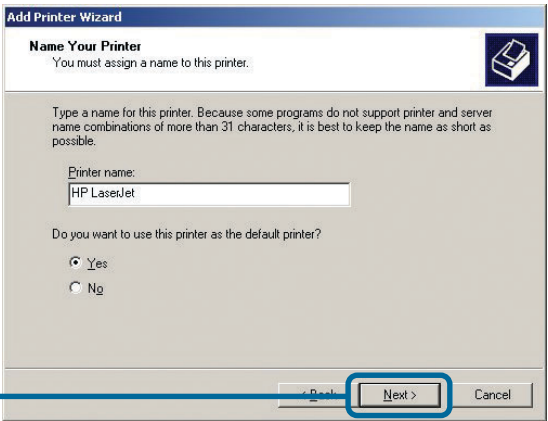


# 2

## Setting up your DP-300U for network printing in Windows XP (continued)

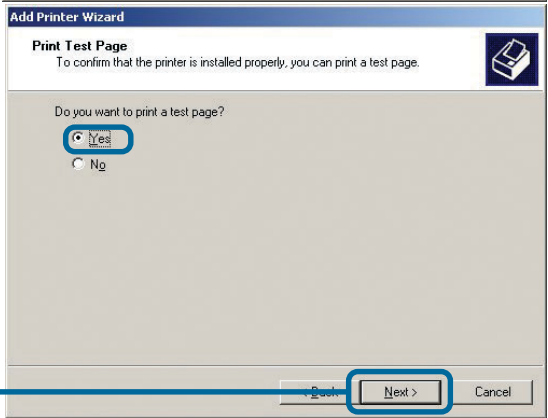
At this screen, you can input a name for this printer.

**Click Next**



Select "Yes" to print a test page

**Click Next**

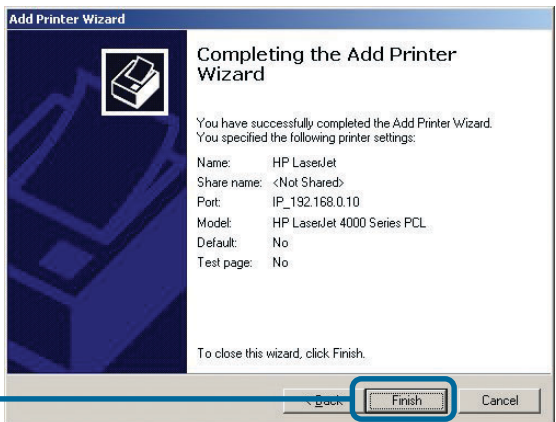


# 3

## Your Setup is Complete!

The printer is now ready for printing with Windows XP, on your network.

**Click Finish**



# Notes

# Notes

## Technical Support

You can find the most recent software and user documentation on the **D-Link** website.

**D-Link** provides free technical support for customers within the United States for the duration of the warranty period on this product.

U.S. customers can contact **D-Link** technical support through our website or by phone.

### **D-Link Technical Support over the Telephone:**

(877) 453-5465

24 hours a day, seven days a week

### **D-Link Technical Support over the Internet:**

<http://support.dlink.com>

email: [support@dlink.com](mailto:support@dlink.com)

