

# Configuration Guide



## WebDAV How-To Guide

### Overview

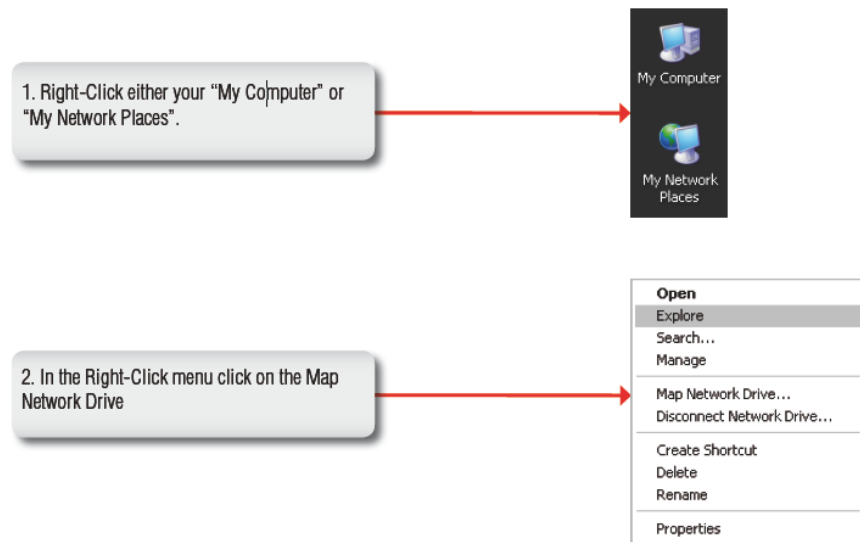
You can connect to your ShareCenter using the Web-based Distributed Authoring and Versioning (WebDAV) protocol from Windows XP

# WebDAV Setting Guide

## Connecting from Windows XP

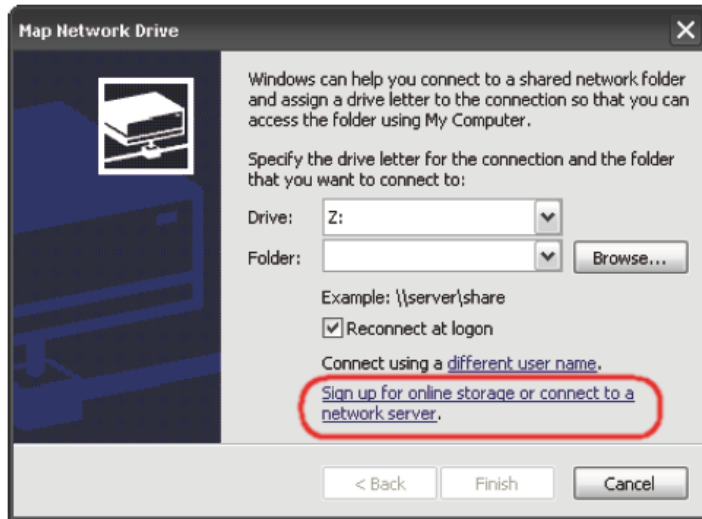
You can connect to your ShareCenter using the Web-based Distributed Authoring and Versioning (WebDAV) protocol from Windows XP using the following procedure.

**Note:** Make sure that the ShareCenter's Network Share and User that you wish to utilize for the connection have the WebDAV protocol enabled. If you need to turn on the WebDAV protocol, access your ShareCenter's WebUI as administrator and modify the User in the Management Tab - Account Management Icon - Users/Groups Menu - User Settings. You can modify the Network Share to turn on the WebDAV protocol in the -Management Tab - Account Management Icon - Network Shares Menu - Network Shares - Settings. Refer to the ShareCenter User Manual for details on configuring these settings.



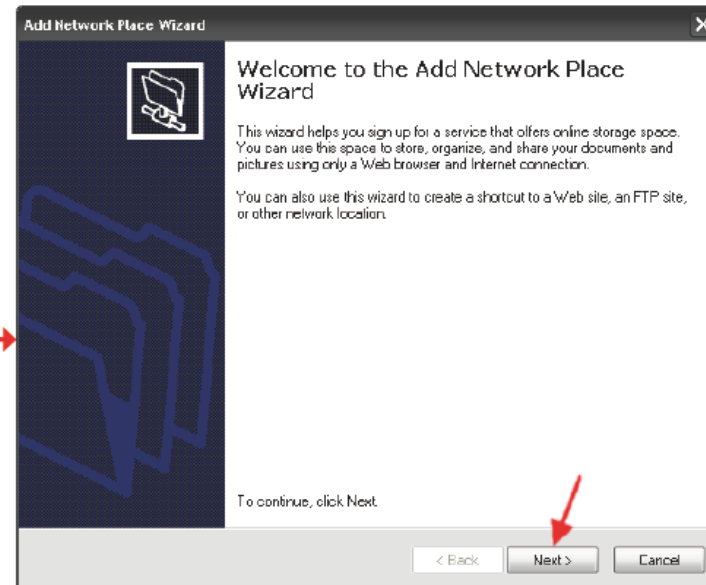
**Note:** If you are going to backup from this NAS as the source content of the backup setting, then make sure that the Remote Backup Server is checked and set with a password. If the ShareCenter is connected to a router, you will need to configure the router to forward port 80 to the IP address of this ShareCenter.

### 3 WebDAV How-To Guide

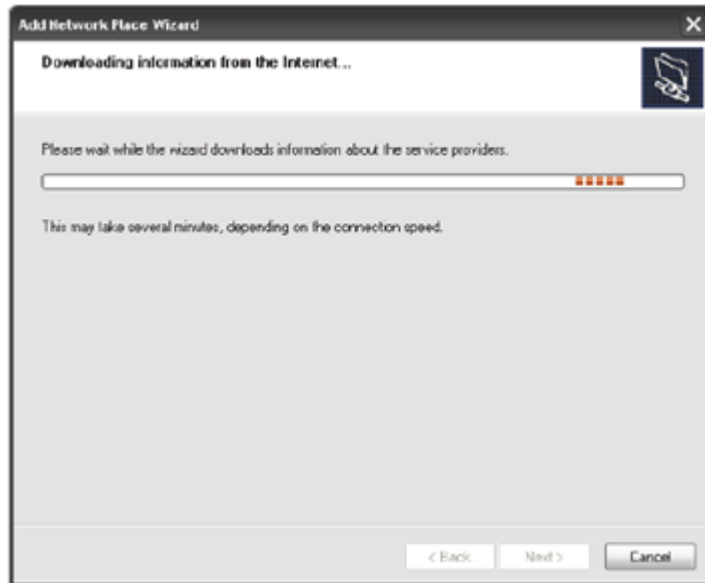


3. In the Map Network Drive window that appears click on the Text link as circled in red on the left.

4. Click on the Next button to continue.

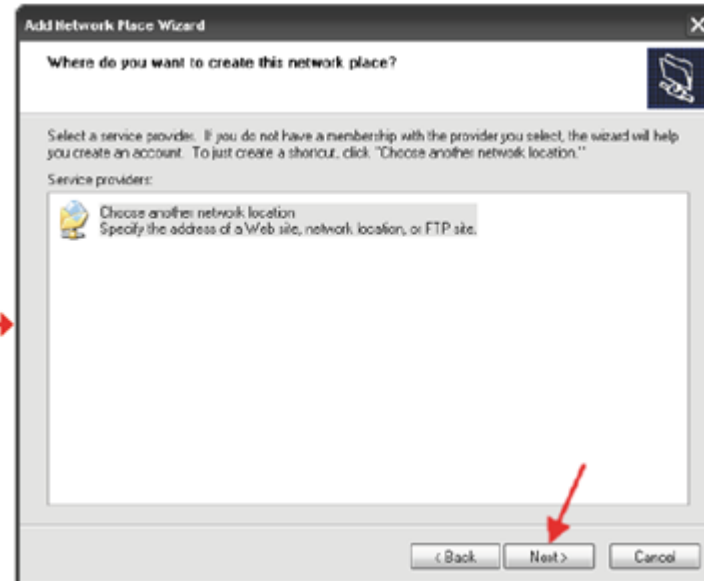


## 4 WebDAV How-To Guide

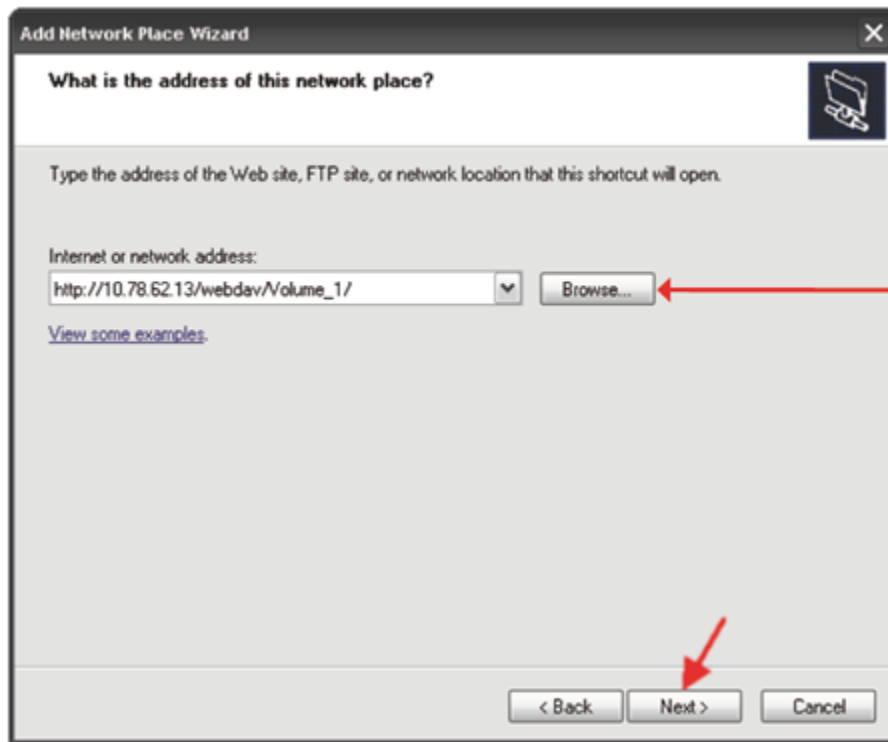


5. Your Windows XP OS will spend a few moments searching for any Service Providers.

6. In the Service Providers list, select the item - **Choose another network location** from the list that appears.  
Then click on the **Next** button to continue..



## 5 WebDAV How-To Guide



7. Enter the appropriate address for your ShareCenter, the format should be:

`http://IP_ADDRESS/webdav/SHARED_NAME/` .

Note, the '/' at the end of the address is necessary.  
The "SHARED\_NAME" is those shares you set through our GUI.



8. Enter your WebDAV enabled username and password for the network share which also has WebDAV enabled.

Click the **OK** button to send the credentials to the ShareCenter.

## 6 WebDAV How-To Guide



9. Occasionally Windows (due to an OS inconsistency) will present a new login dialogue box with the username prepended with the ShareCenter IP address.

Click the **Cancel** button if this occurs. If not skip to Step 13.

10. Click the **OK** button.



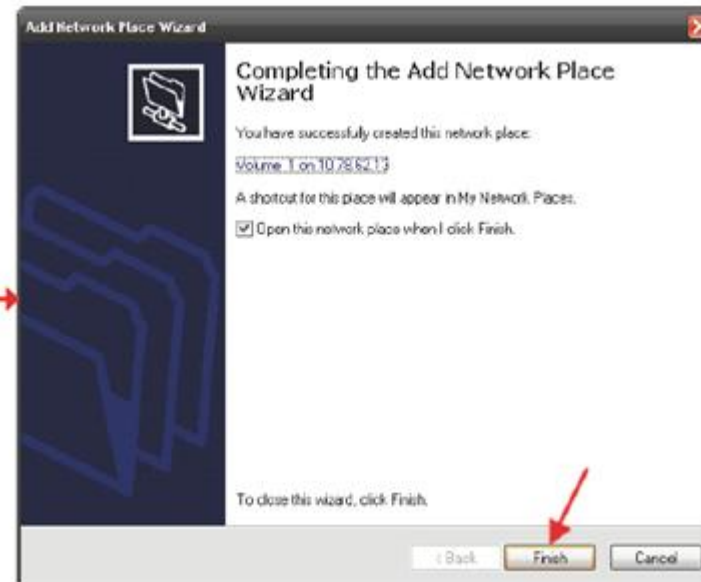
## 7 WebDAV How-To Guide



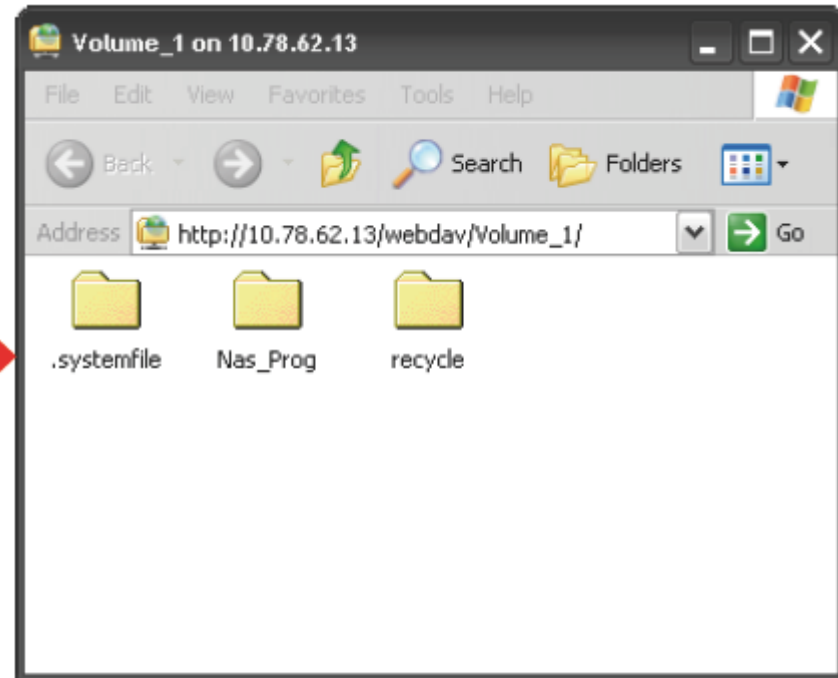
13. Type a name for the WebDAV connection (optional).

Click the **Next** button to continue.

14. Click the **Finish** button to end the wizard and open the WebDAV connection to your ShareCenter..



15. Windows will now have file access to your ShareCenter through the WebDAV protocol.



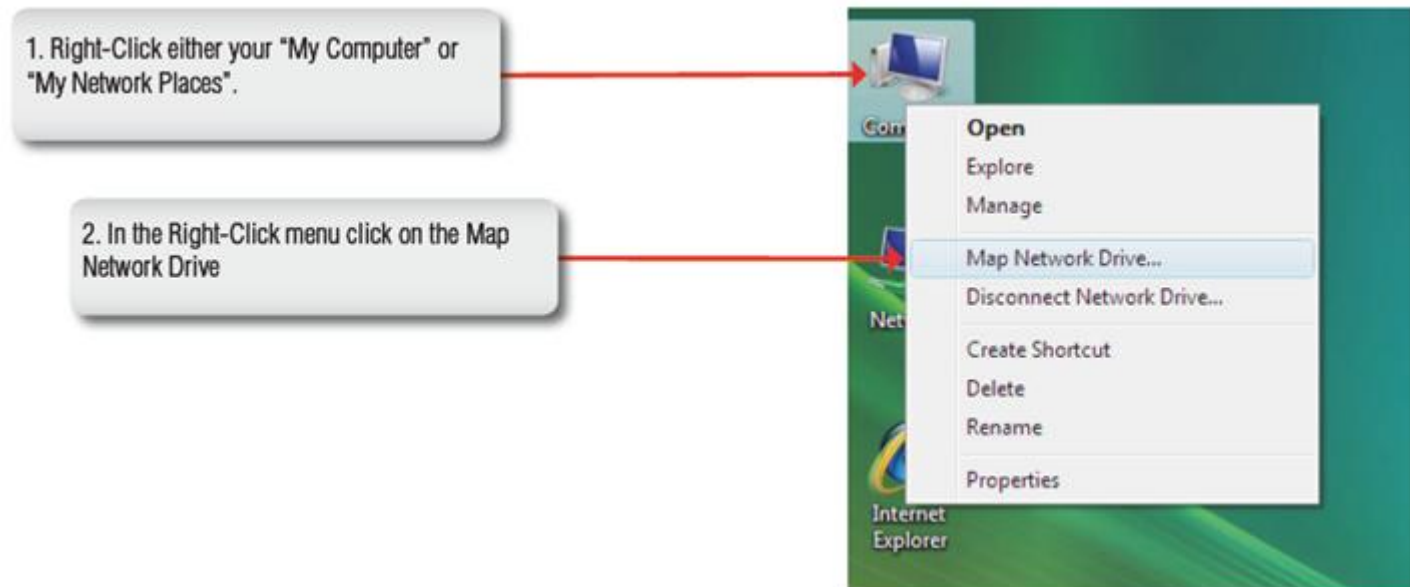


## Connecting from Windows Vista

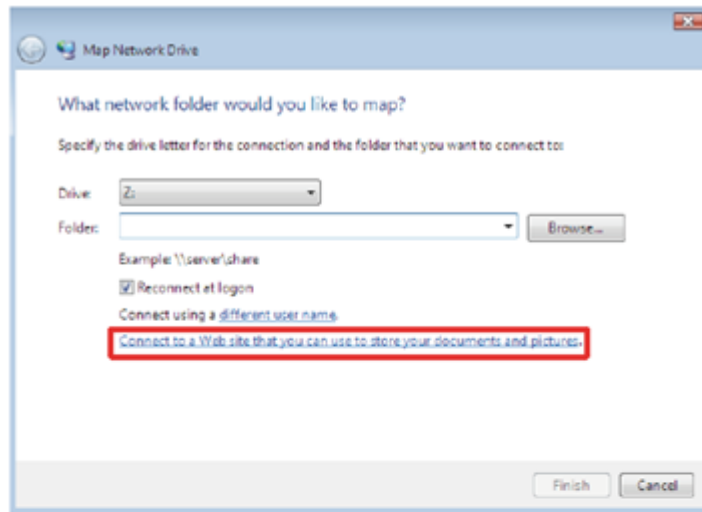
You can connect to your ShareCenter using Web-based Distributed Authoring and Versioning (WebDAV) protocol from Windows Vista using the following procedure.

**Note 1:** Before following this procedure make sure that your Vista installation is updated with *Service Pack 2* and the Windows Vista software update *KB907306*.

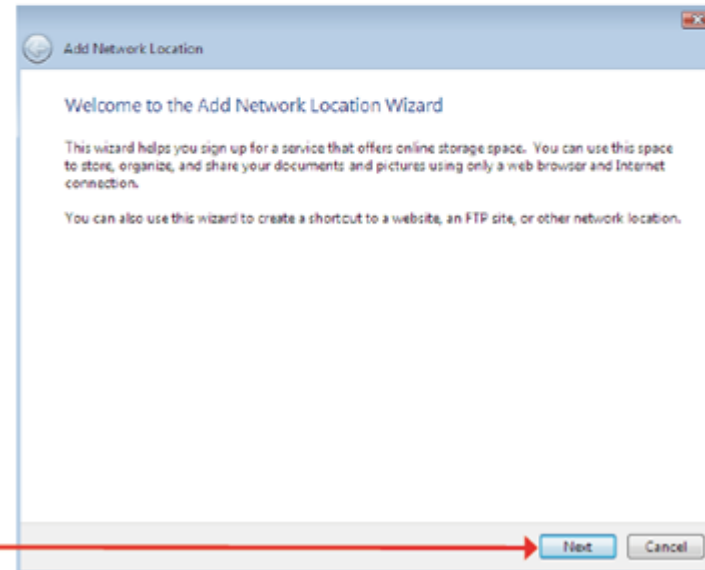
**Note 2:** Make sure that the ShareCenter's Network Share and User that you wish to utilize for the connection have the WebDAV protocol enabled. If you need to turn on the WebDAV protocol, access your ShareCenter's WebUI as administrator and modify the User in the Management Tab - Account Management Icon - Users/Groups Menu - User Settings. You can modify the Network Share to turn on the WebDAV protocol in the -Management Tab - Account Management Icon - Network Shares Menu - Network Shares - Settings. Refer to the ShareCenter User Manual for details on configuring these settings.



## 10 WebDAV How-To Guide

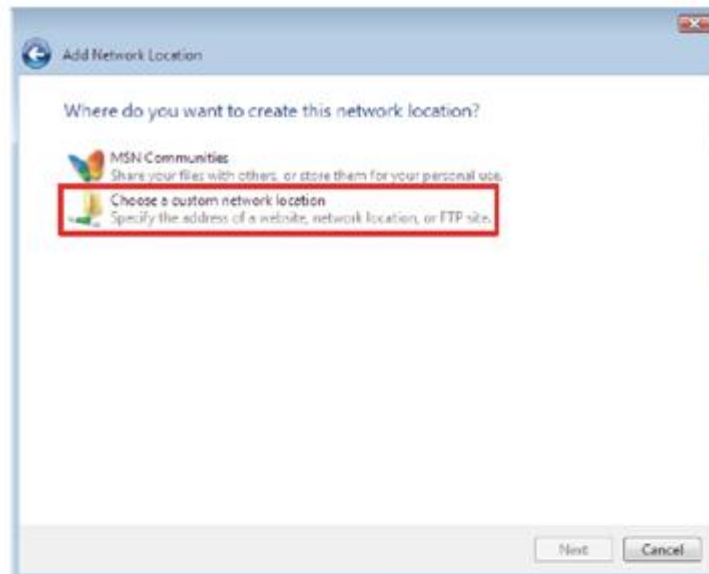


3. In the Map Network Drive window that appears click on the Text link as circled in red on the left.



4. Click on the Next button to continue.

## 11 WebDAV How-To Guide



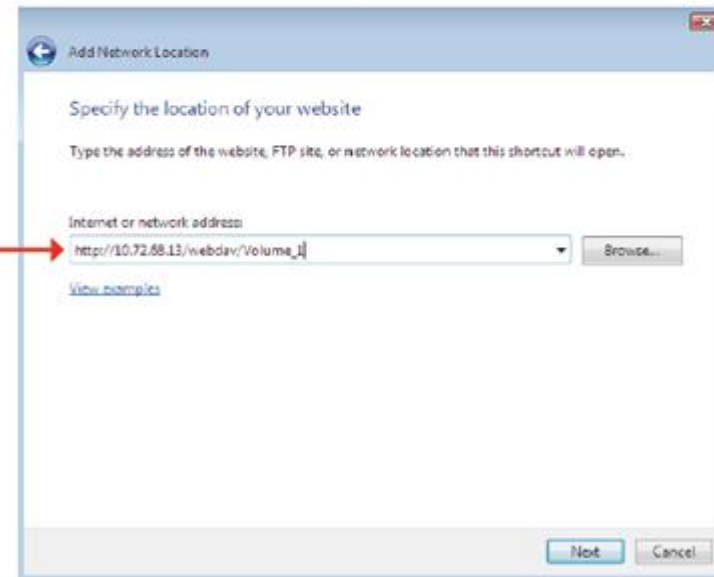
6. In the Add Network Location list, select the item **Choose a custom network location** from the list that appears.

Then click on the **Next** button to continue..

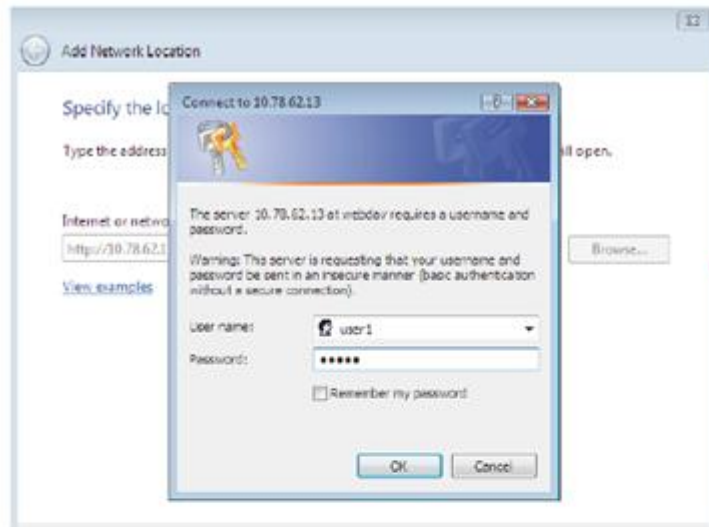
7. Enter the appropriate address for your ShareCenter, the format should be:

`http://IP_ADDRESS/webdav/SHARED_NAME`

The "SHARED\_NAME" is those shares you set through our GUI.



## 12 WebDAV How-To Guide

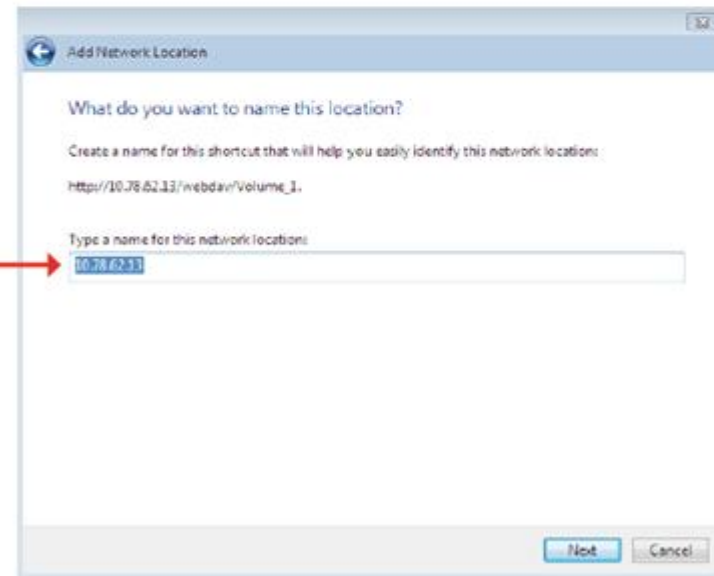


8. Enter your WebDAV enabled username and password for the network share which also has WebDAV enabled.

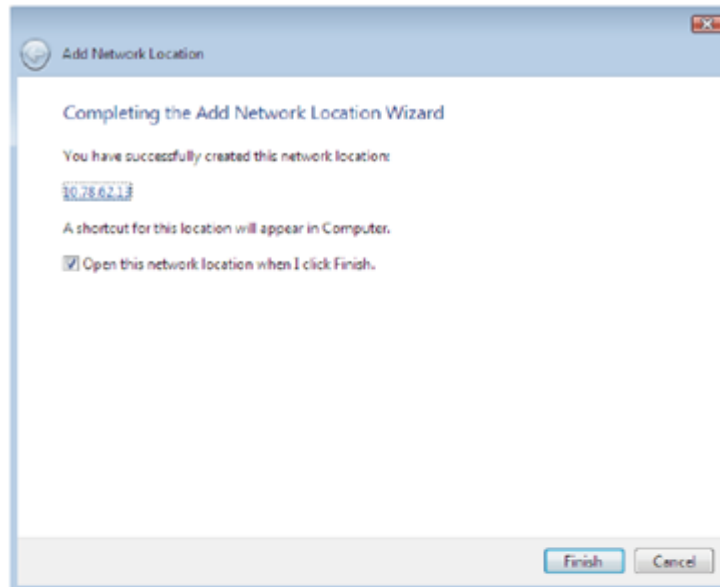
Click the **OK** button to send the credentials to the ShareCenter.

9. Type a name for the WebDAV connection (optional).

Click the **Next** button to continue.

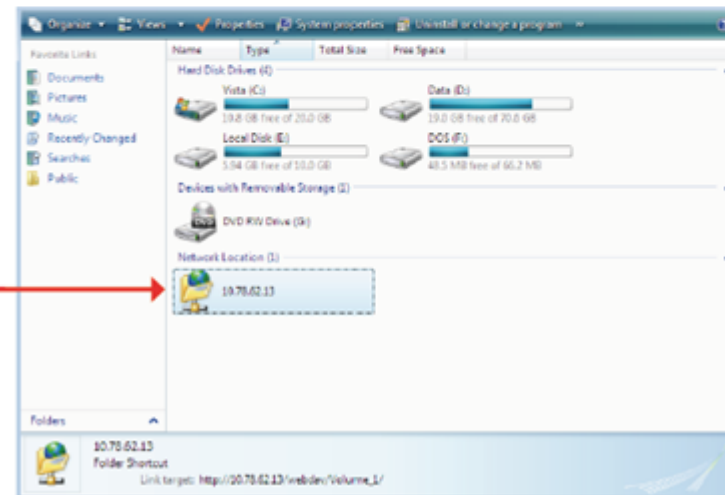


## 13 WebDAV How-To Guide



10. The WebDAV connection is now configured. Click the **Finish** button to open the WebDAV connection.

11. Windows will now have file access to your ShareCenter through the WebDAV protocol.



## Connecting from Windows 7

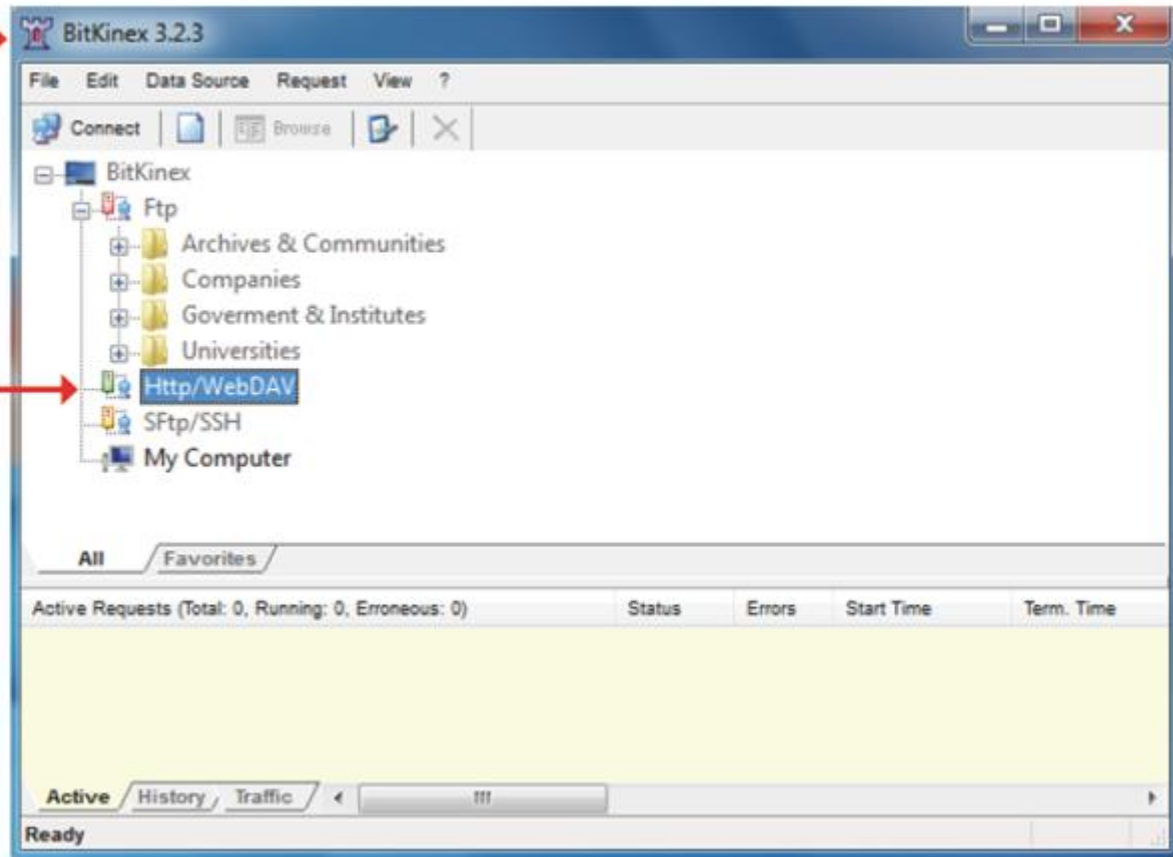
You can connect to your ShareCenter using Web-based Distributed Authoring and Versioning (WebDAV) protocol from Windows 7 using the following procedure which utilizes the BitKinex client to connect to your ShareCenter over WebDAV.

**Note 1:** Windows 7 irregularities make it necessary to install a 3rd Party file sharing client for the WebDAV Protocol. The following is an example of a 3rd Party tool.

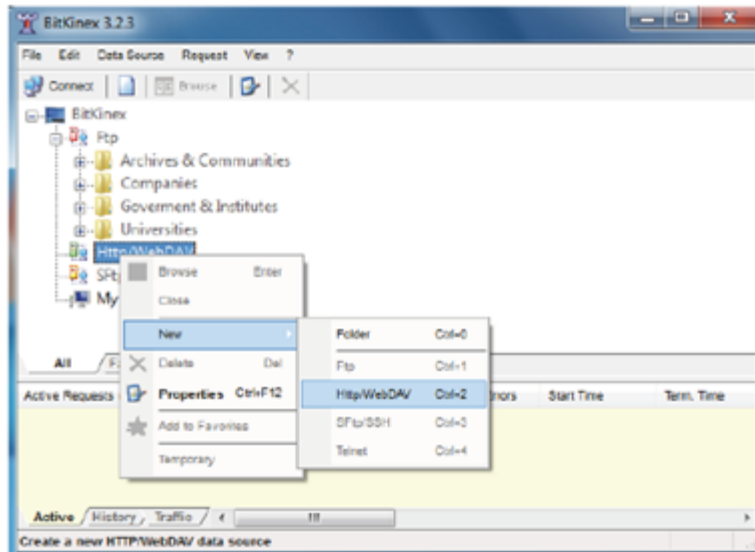
**Note 2:** Make sure that the ShareCenter's Network Share and User that you wish to utilize for the connection have the WebDAV protocol enabled. If you need to turn on WebDAV protocol access your ShareCenter's WebUI as administrator and modify the User in the Management Tab - Account Management Icon - Users/Groups Menu - User Settings. You can modify the Network Share to turn on the WebDAV protocol in the -Management Tab - Account Management Icon - Network Shares Menu - Network Shares - Settings. Refer to the ShareCenter User Manual for details on configuring these settings.

1. From <http://www.bitkinex.com/> install the free file sharing client "BitKinex" ..

2. Launch the BitKinex client application and select Http/WebDAV from the menu tree.

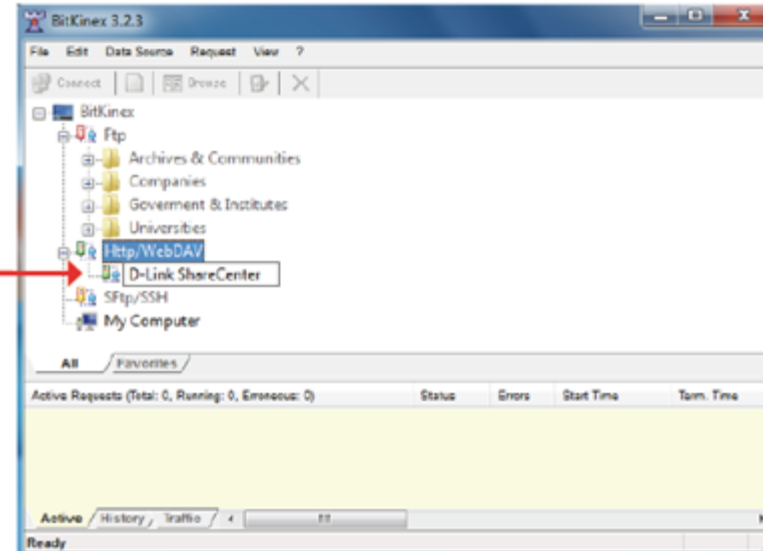


## 16 WebDAV How-To Guide



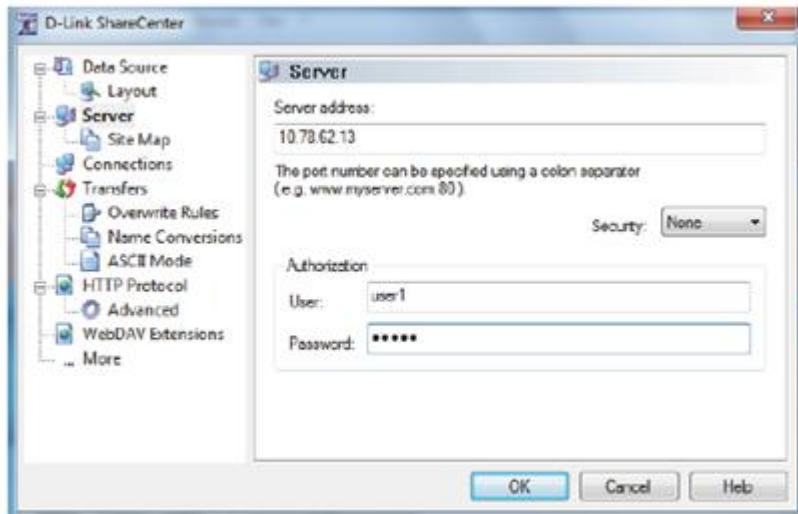
3. Right-Click **Http/WebDAV** in the menu tree and select **New** and then **Http/WebDAV** from the menus that appear.

4. Enter a Name to used for the new connection icon that appears.





17 WebDAV How-To Guide



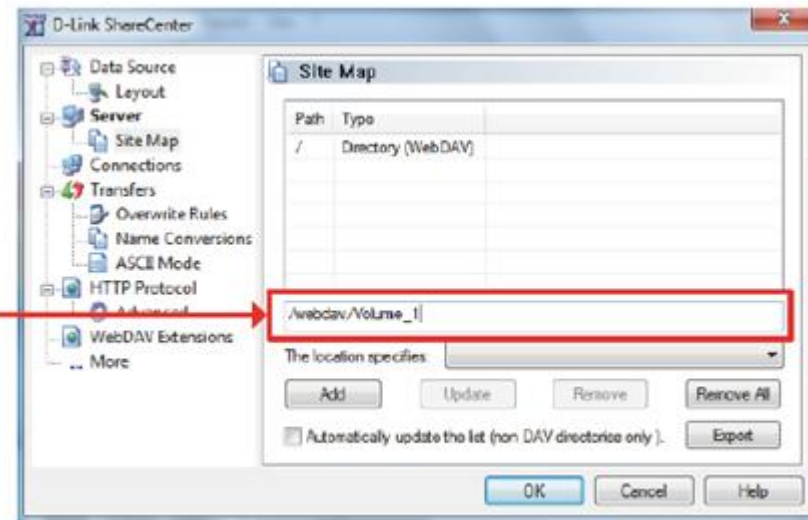
5. Input the IP address of your ShareCenter and then enter your WebDAV enabled username and password for the network share which also has WebDAV enabled.

Click the **OK** button to continue.

6. Enter name of the network share preceded by webdav as shown in the red encircled area to the right. The format should be:

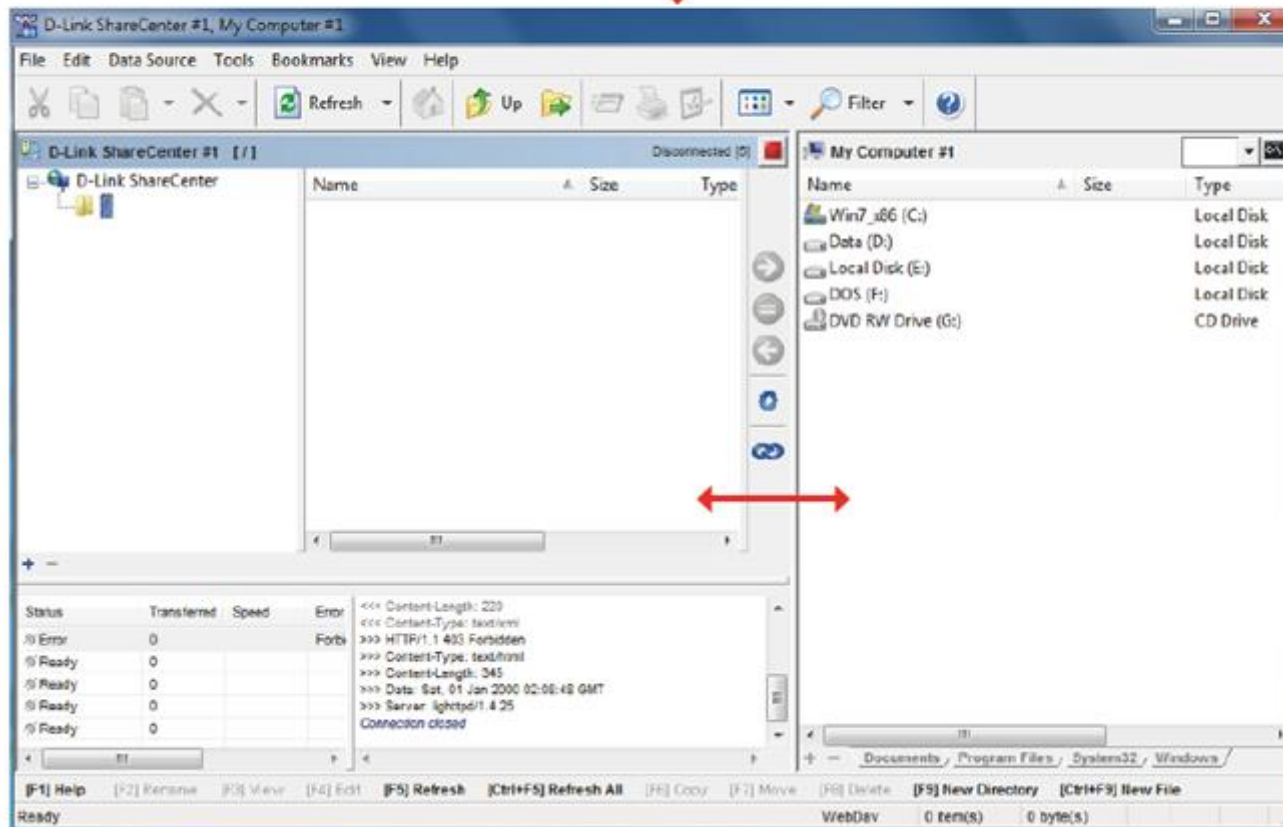
`/webdav/SHARED_NAME`

Click the **OK** button to continue.



## 18 WebDAV How-To Guide

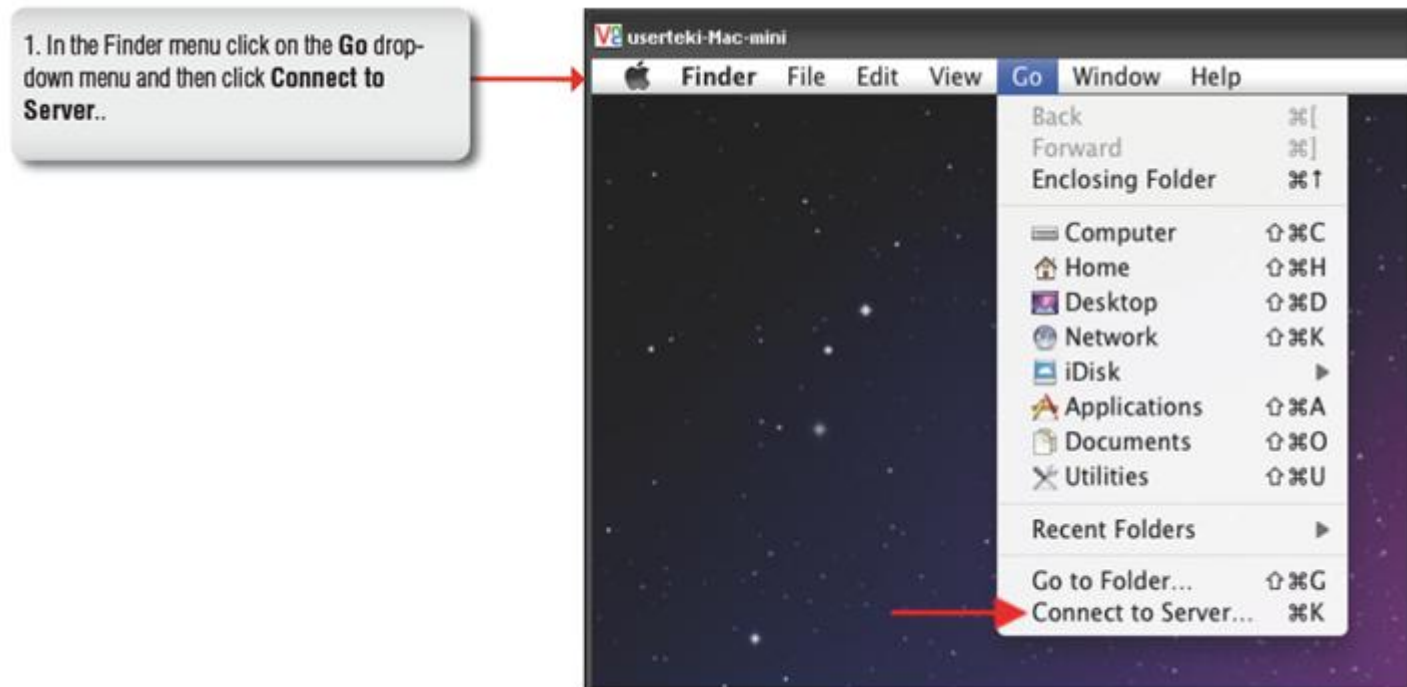
7. BitKinix is now connected over WebDAV to your ShareCenter. You can now transfer files selected between your Windows 7 files system and the ShareCenter..



## Connecting from MAC OS

You can connect to your ShareCenter using Web-based Distributed Authoring and Versioning (WebDAV) protocol from MAC OS using the following procedure.

**Note:** Make sure that the ShareCenter's Network Share and User that you wish to utilize for the connection have the WebDAV protocol enabled. If you need to turn on the WebDAV protocol, access your ShareCenter's WebUI as administrator and modify the User in the Management Tab - Account Management Icon - Users/Groups Menu - User Settings. You can modify the Network Share to turn on the WebDAV protocol in the -Management Tab - Account Management Icon - Network Shares Menu - Network Shares - Settings. Refer to the ShareCenter User Manual for details on configuring these settings.



## 20 WebDAV How-To Guide

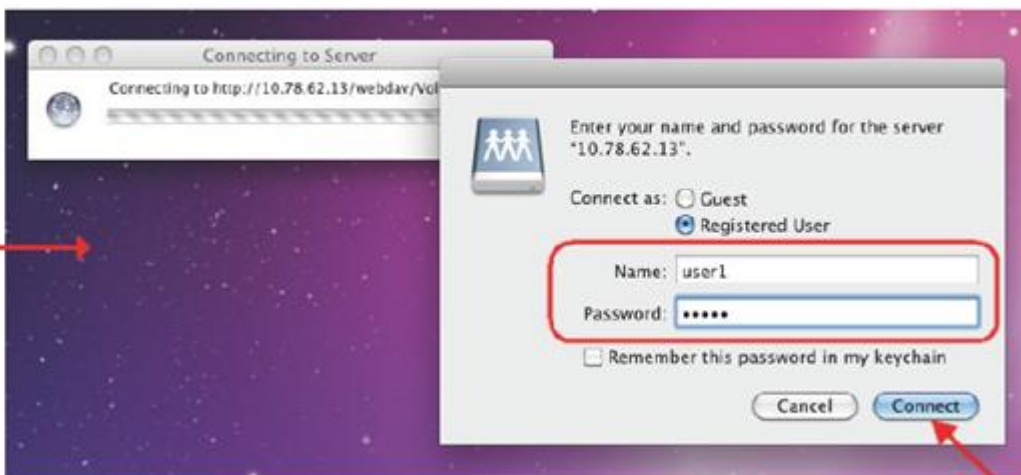


2. Enter the appropriate address for your ShareCenter the format should be:

`http://IP_ADDRESS/webdav/SHARED_NAME`

Note. The "SHARED\_NAME" is those shares you set through our GUI.

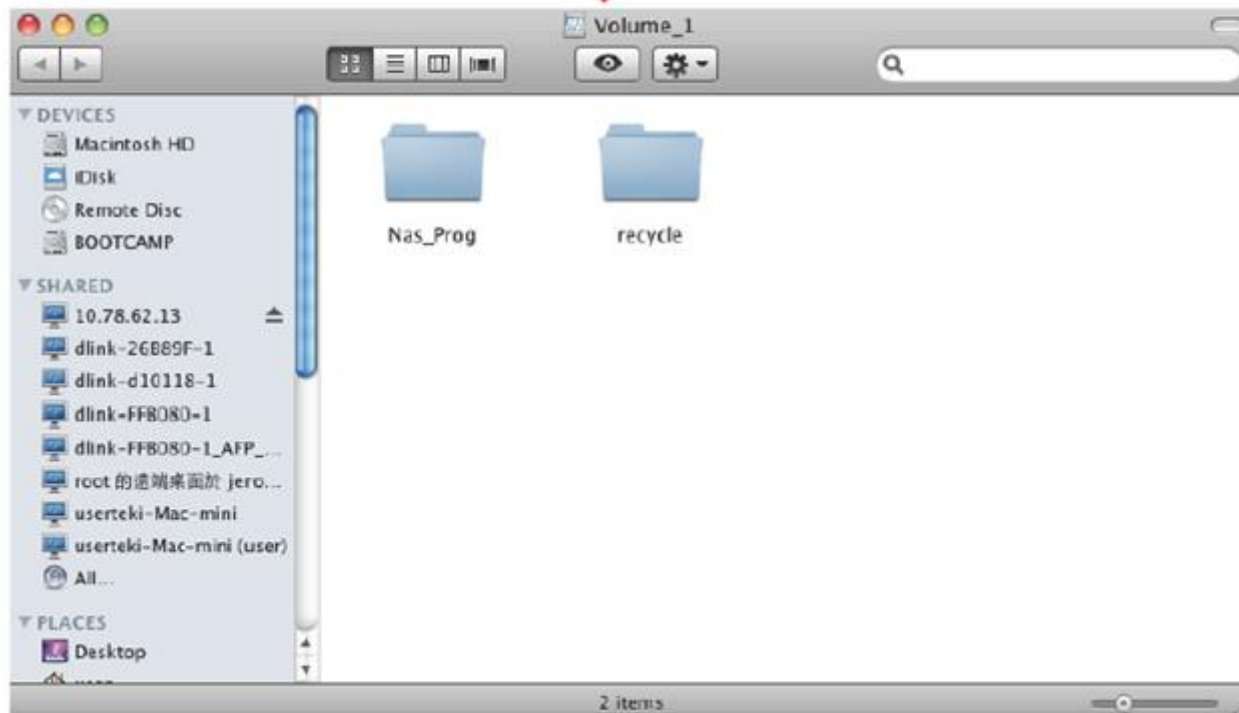
Click the **Connect** button to continue.



3. Enter your WebDAV enabled username and password for the network share which also has WebDAV enabled.

Click the **Connect** button to send the credentials to the ShareCenter.

4. Your MAC OS will now have file access to your ShareCenter using WebDAV protocol protocol.

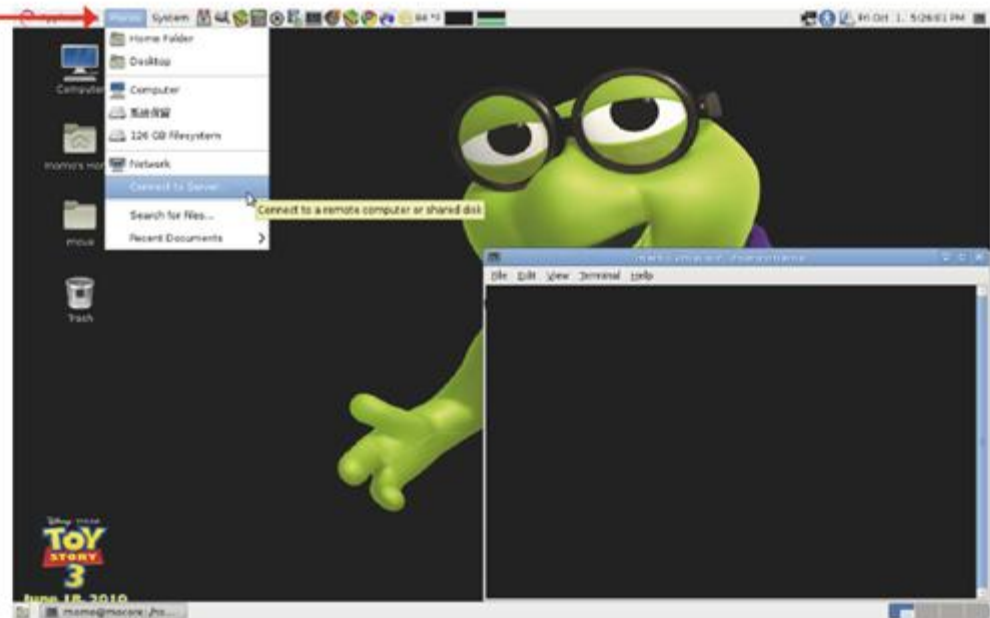


## Connecting from LINUX

You can connect to your ShareCenter using Web-based Distributed Authoring and Versioning (WebDAV) protocol from LINUX OS using the following procedure.

**Note:** Make sure that the ShareCenter's Network Share and User that you wish to utilize for the connection have the WebDAV protocol enabled. If you need to turn on the WebDAV protocol, access your ShareCenter's WebUI as administrator and modify the User in the Management Tab - Account Management Icon - Users/Groups Menu - User Settings. You can modify the Network Share to turn on the WebDAV protocol in the -Management Tab - Account Management Icon - Network Shares Menu - Network Shares - Settings. Refer to the ShareCenter User Manual for details on configuring these settings.

1. In the Main Menu click on the **Places** drop-down menu then select and click on **Connect to Server**.

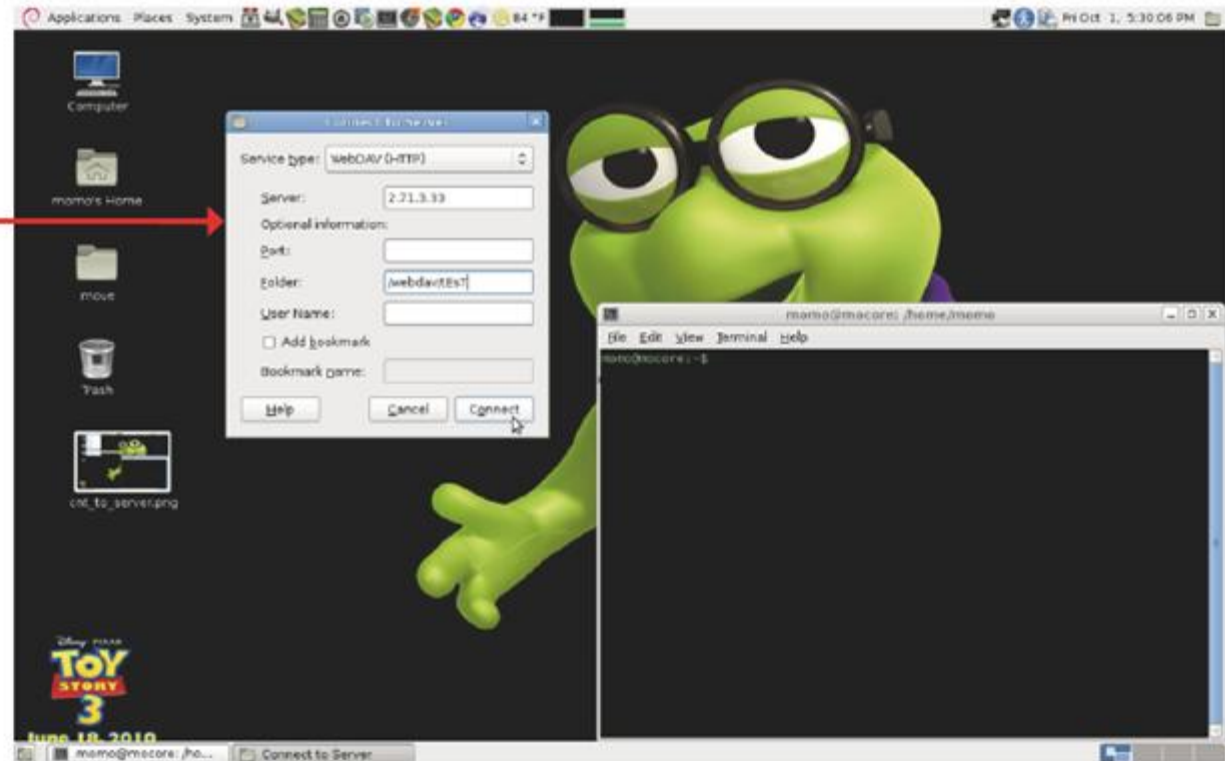


2. A dialogue box appears. Select and input the following:

Service type: WebDAV (HTTP)  
Server: Your ShareCenter's IP Address  
Folder: /webDAV/SHARED\_NAME

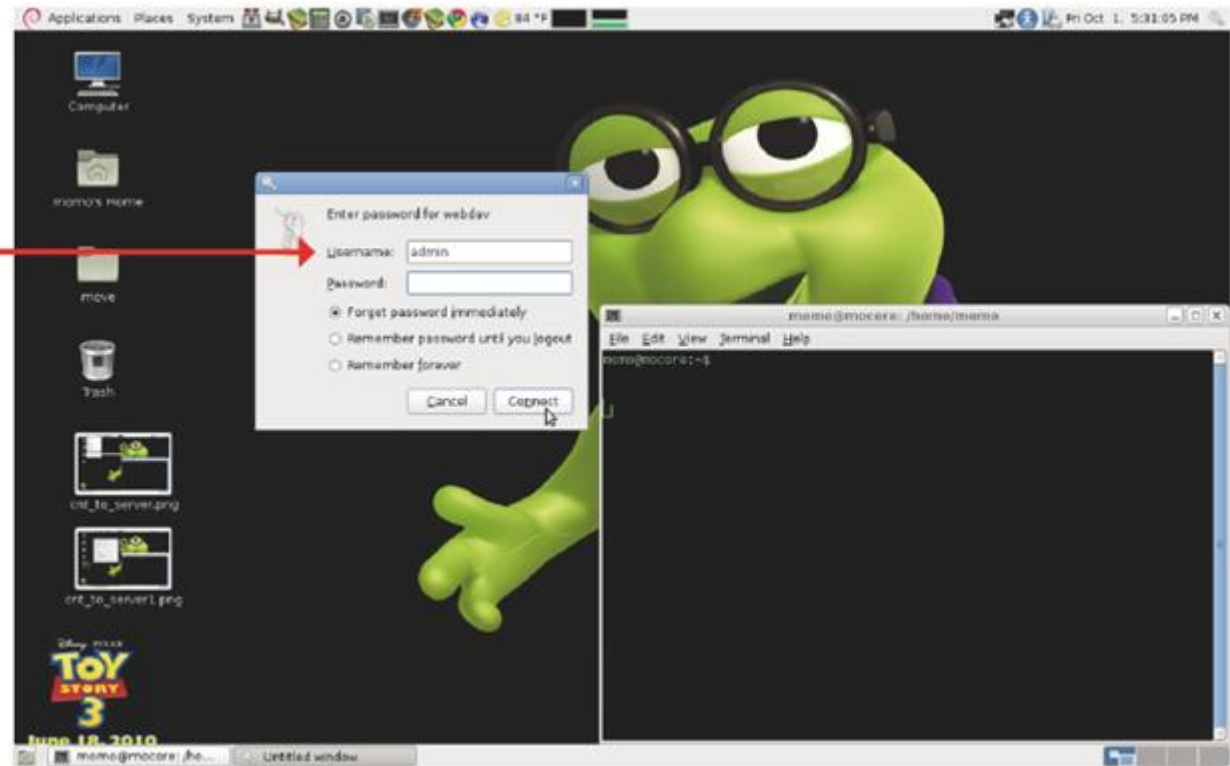
Where SHARED\_NAME is the name of the WebDAV configured network share.

Then click the **Connect** button to continue.



3. Enter your WebDAV enabled username and password for the network share which also has WebDAV enabled.

Click the **Connect** button to send the credentials to the ShareCenter..





4. The WebDAV folder is now mounted with the file access permissions that were set for the username used to login.

