

# Configuration Guide



## Time Machine How-To Guide

### Overview

Whether you are backing up data on a regular basis or periodically, Time Machine will save that data on a local or remote disk drive. Saving data on an internal drive is quick and safe while saving data to an external USB drive is convenient but slow. D-Link offers an alternative to both these solutions. The ShareCenter™ is a NAS that offers Time Machine functionality and this How-to guide will show you how to set up Time Machine with the ShareCenter.

# Time Machine

Time machine is an application in OS X that allows Mac users to automatically save up-to-date copies of everything on their machine. It basically acts as a backup tool for Apple machines. However, Time Machine doesn't work on all backup hardware. Whether you are backing up data on a regular basis or periodically, Time Machine will save that data on a local or remote disk drive. Saving data on an internal drive is quick and safe while saving data to an external USB drive is convenient but slow. D-Link offers an alternative to both these solutions. The ShareCenter is a NAS that offers Time Machine functionality and this How-to guide will show you how to set up Time Machine with the ShareCenter.

## What you need:

- Mac Compatible computer
- Time Machine software
- ShareCenter
- Hard drives (sufficient data space to mirror your current Mac or larger)
- Router with DHCP enabled
- Network connectivity
- DNS-320 users must upgrade to Firmware version 2.00



# Instructions

## Step 1:

Set up the NAS on your network. See **User's Manual** for details.



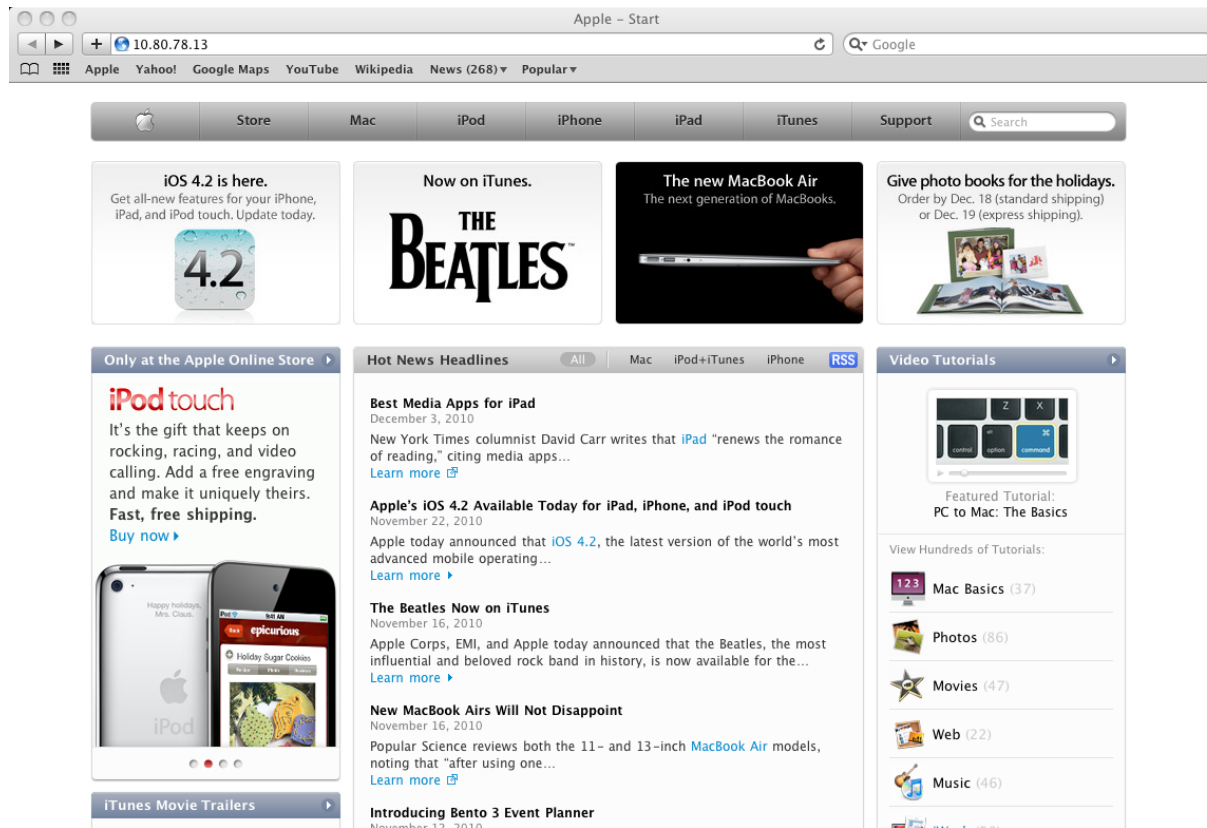
## Note:

Configure your router to be a DHCP server for the rest of your network. This should assign both your **Mac computer and ShareCenter NAS** individual IP addresses. Once you have the NAS IP address, ping it to see if it is 'alive'.

Before proceeding to **Step 2** of this guide, be sure you know the IP address of the **ShareCenter NAS**.

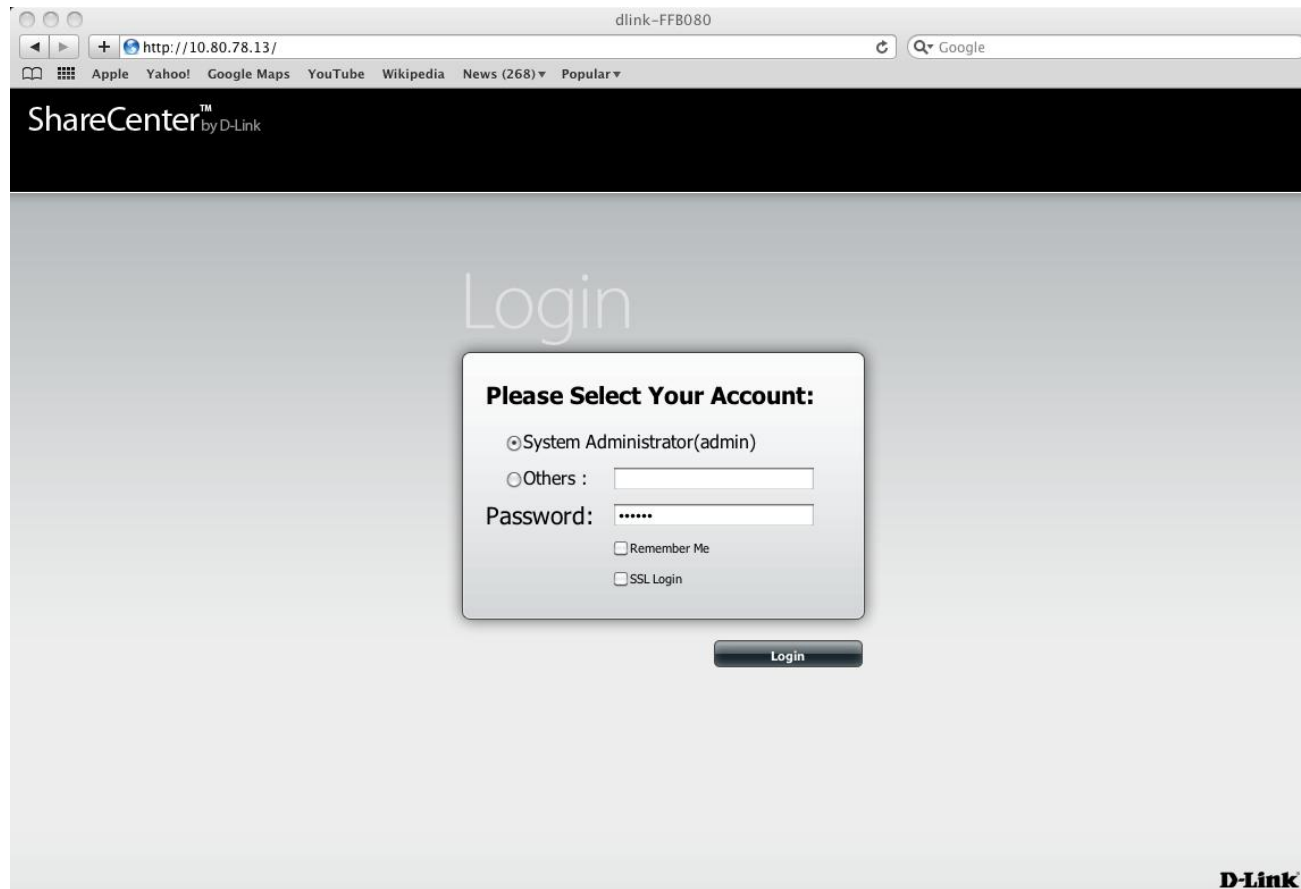
## Step 2:

Open **Safari** and type in the IP address of the **ShareCenter**.



## Step 3:

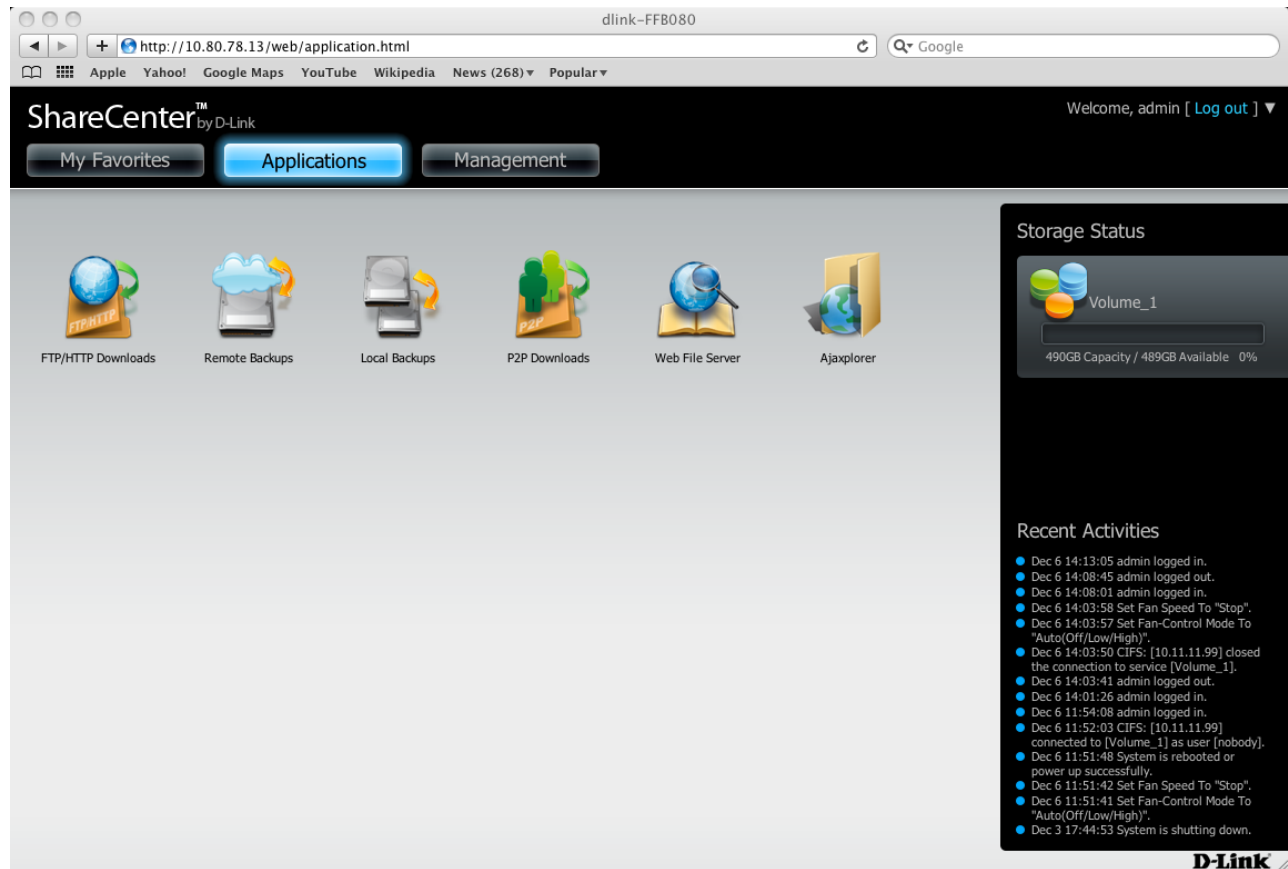
At the login screen, select **System Administrator**, and type in a password. Click **Login**.



## Step 4:

The **ShareCenter** home screen will display three main icons at the top: **My Favorites**, **Applications**, and **Management**. This is the volume created by the NAS. Click **Applications**.

**Note:** At the right-hand side of the screen, there is section called **'Storage Status'**



## Step 5:

Select **Local Backups** then click **Time Machine**. Under **Time Machine Enable/disable**, check **Enable Time Machine**.



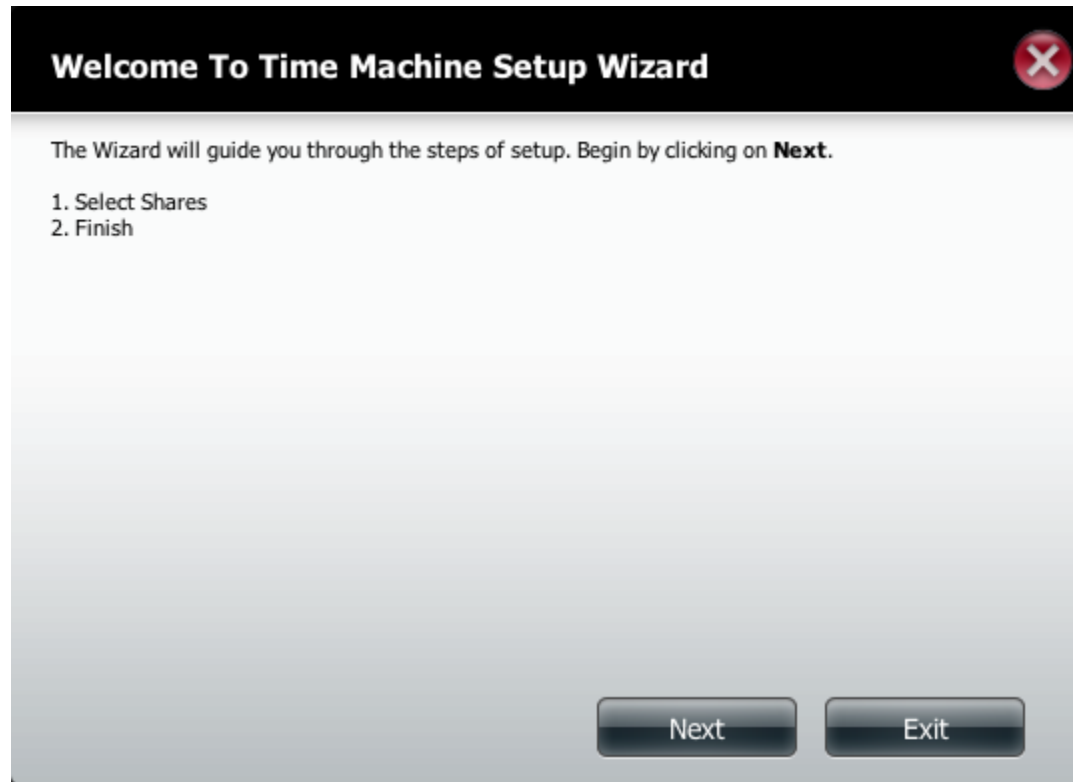
## Step 6:

Next click the **blue arrow** under **Time Machine Settings**. This will reveal the available storage devices. If none are present, click the **New** button.



## Step 7:

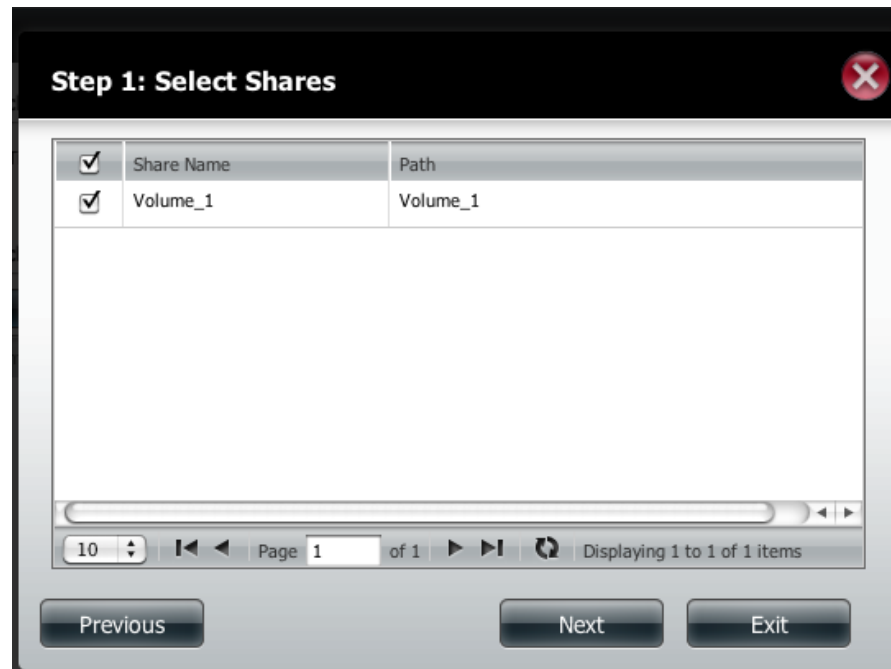
Click **Next** and the 'Welcome to Time Machine Setup Wizard' will appear. Click **Next** to continue.





## Step 8:

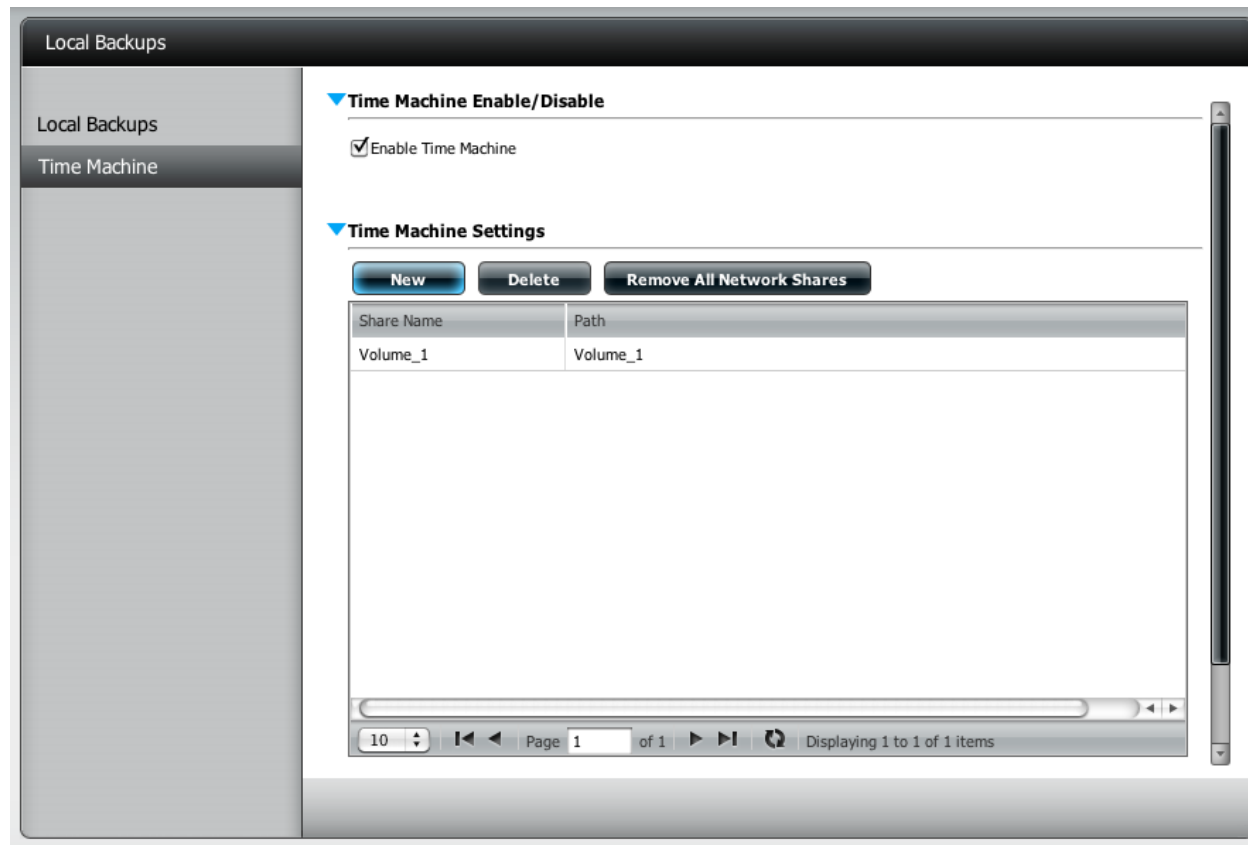
From the **Select Shares** description, check the **Volume** that you want to use with **Time Machine** and click **Next**.



Click **Next** again.

## Step 9:

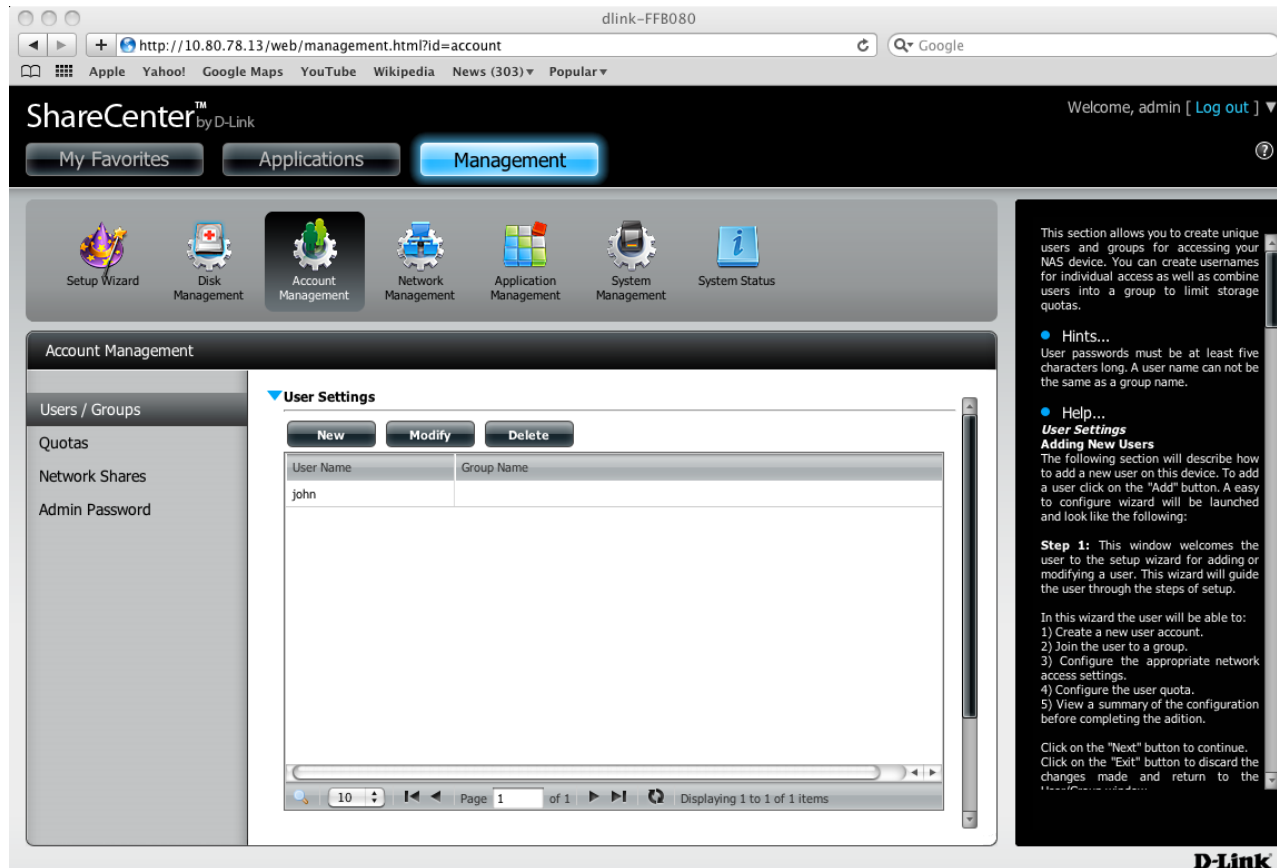
The new volume will be displayed in the **Time Machine Settings**.



Before you set up **Time Machine** on the Mac, you must first create a new user account on the ShareCenter NAS.

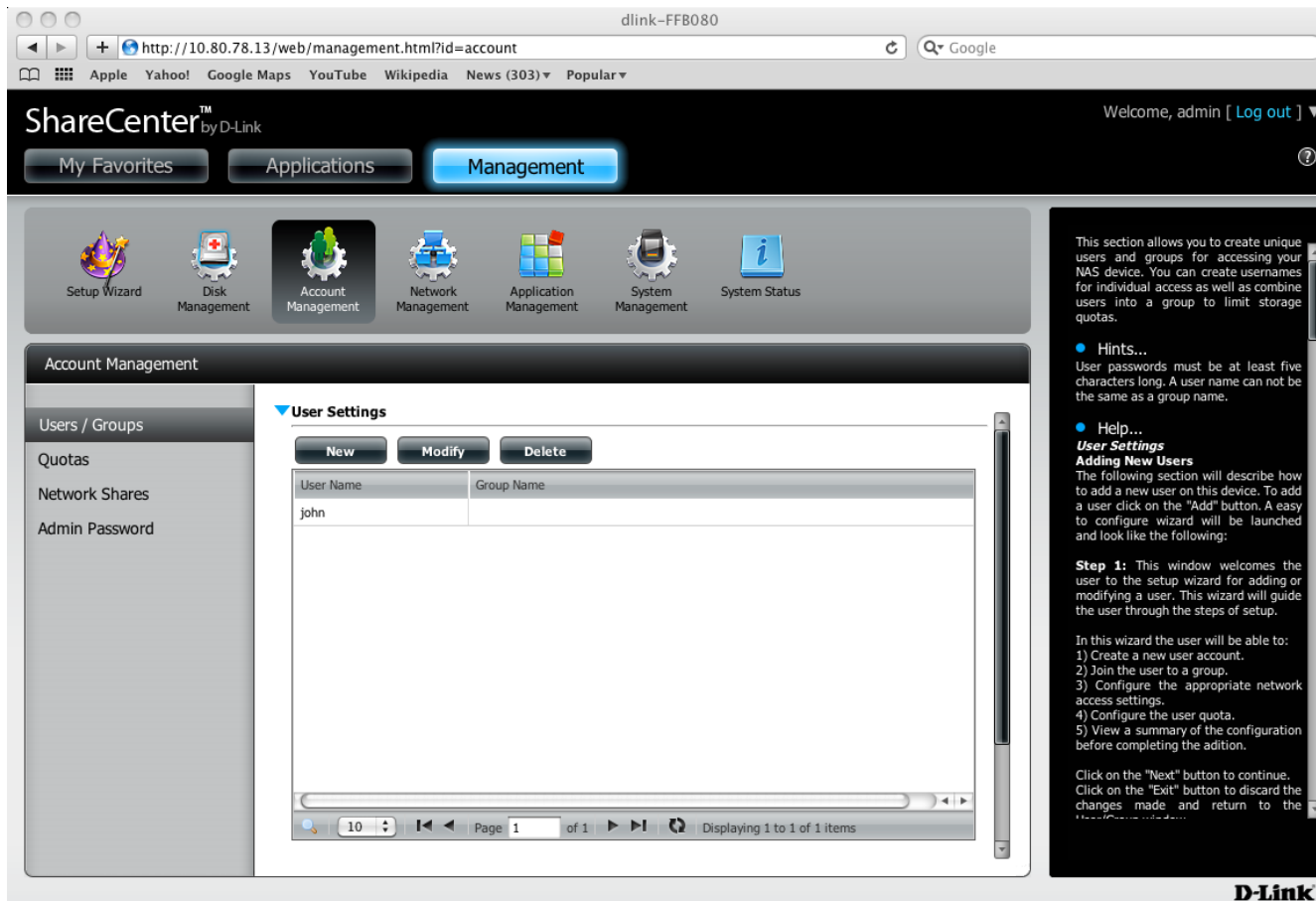
# Step 10:

Once you have logged into the server, go to the **Management** icon atop. Then click on **Account Management**.



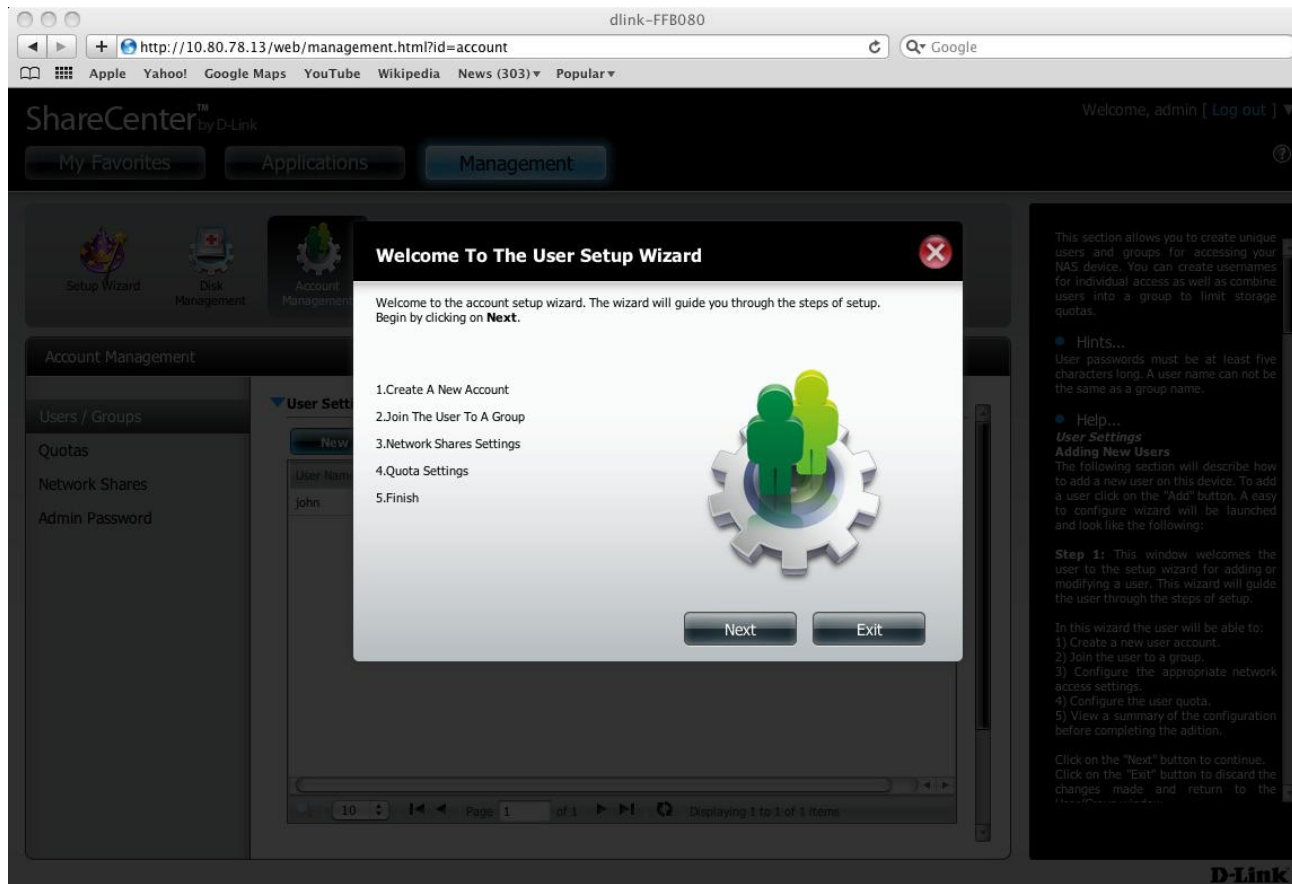
# Step 11:

Click the **Users/Groups** tab on the left, then under **User Settings** click **New** to create a new user. This will direct you to **The User Setup Wizard**.



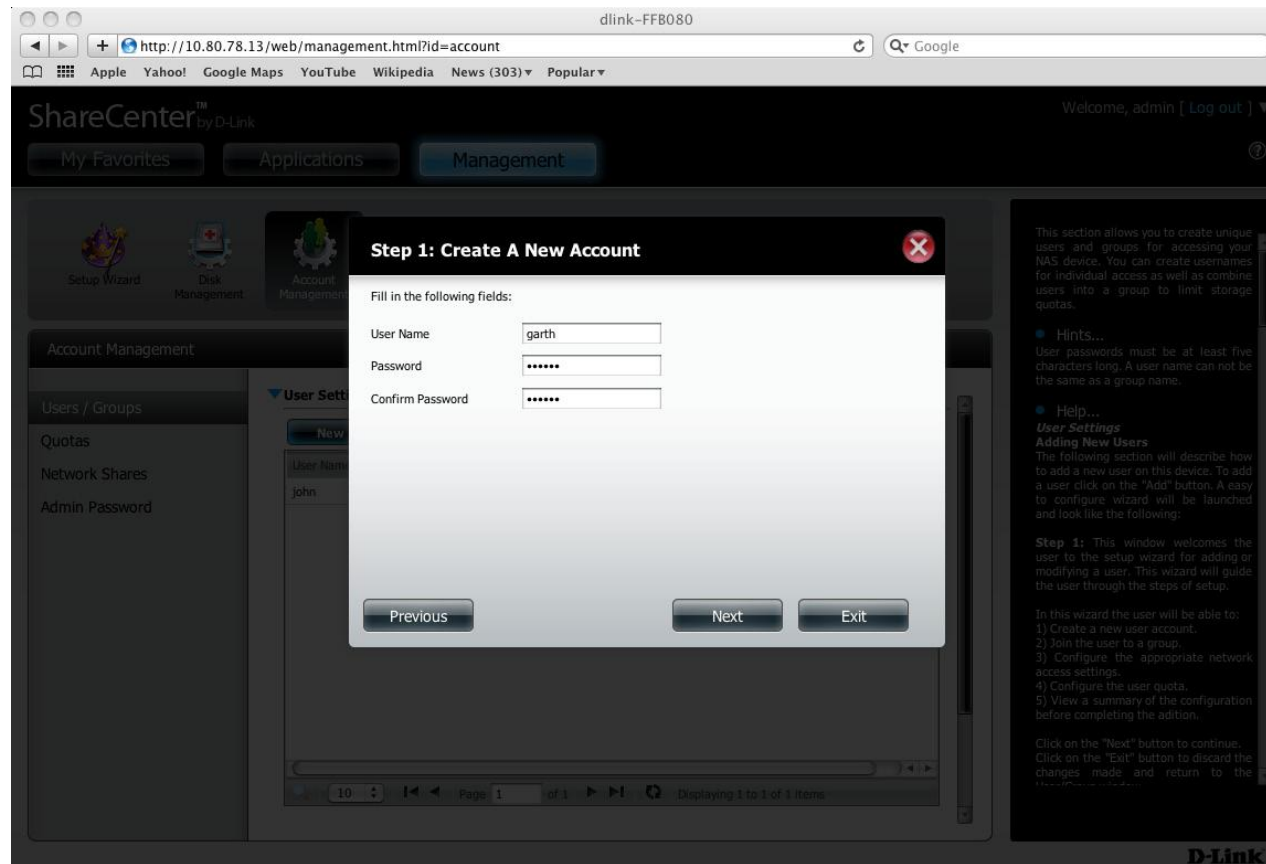
## Step 12:

In the welcome screen of **The User Setup Wizard**, click **Next** to continue.



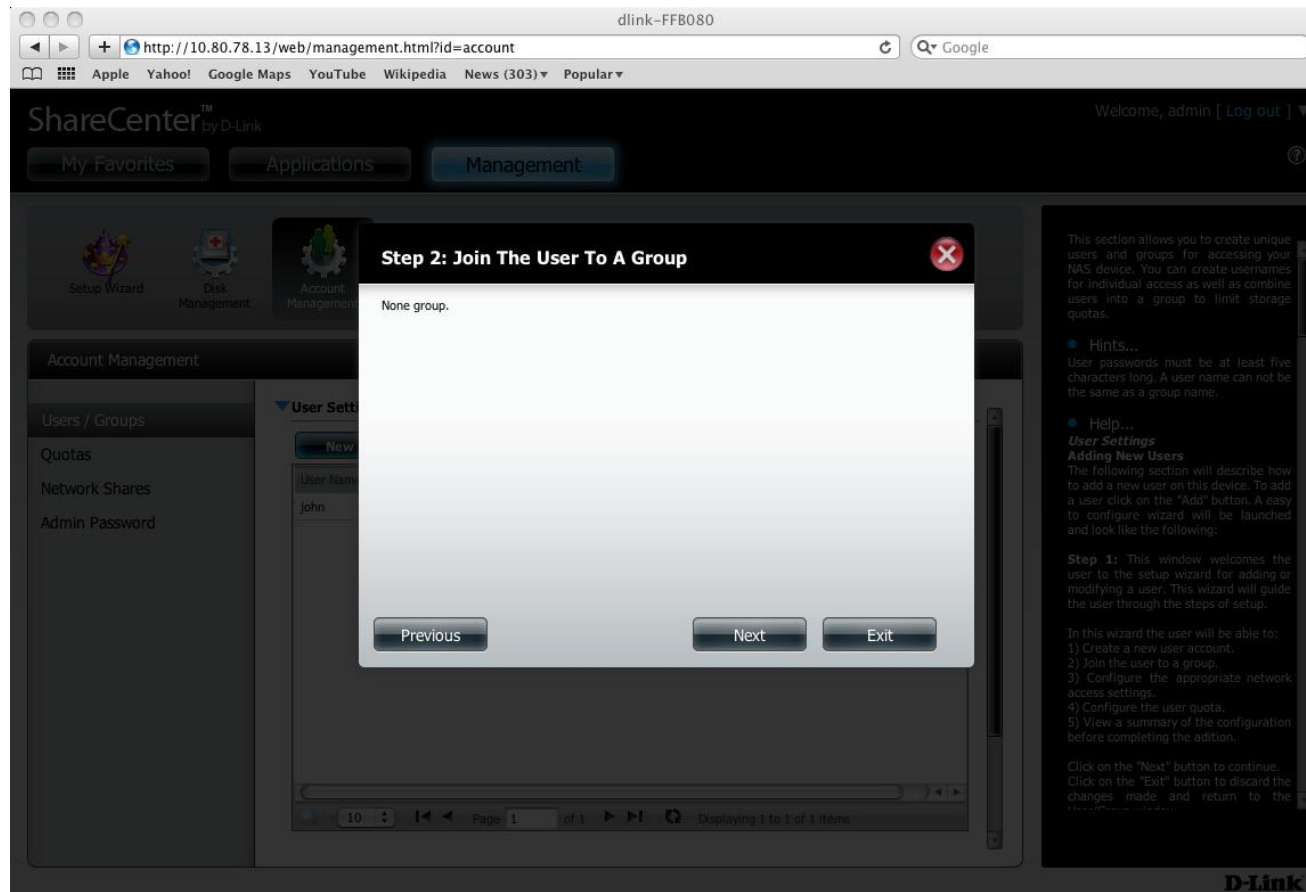
## Step 13:

In the **Create a New Account** step, type a **Username**, **Password**, and **confirmation of the password**. Do not use **admin** as the new account name. Click **Next** to continue.



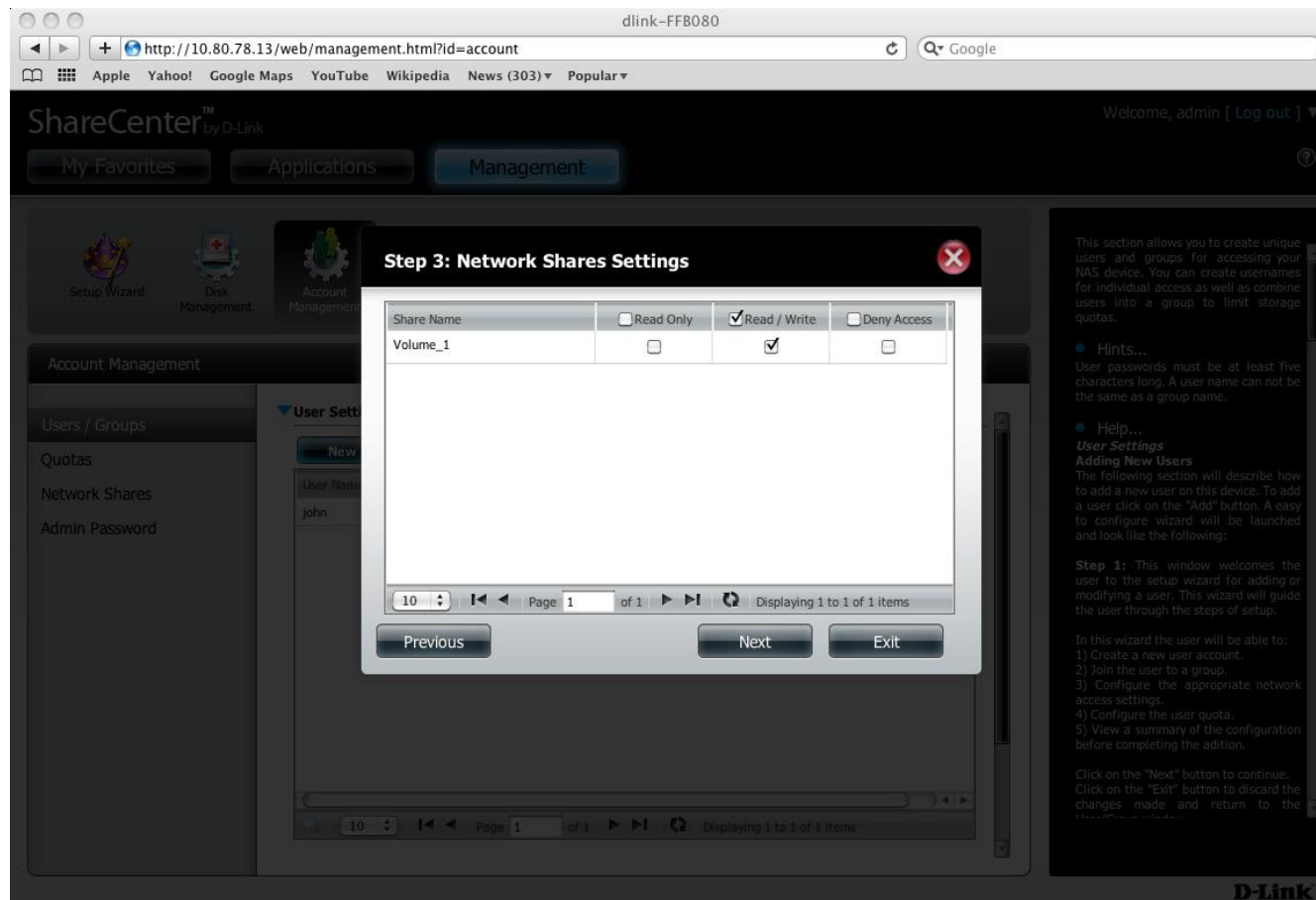
## Step 14:

Next, under the **Join the User to a Group**, select a **Group** or do not select anything (if there is no group present) and click **Next** to continue.



## Step 15:

Next under **Network Shares Settings**, select the type of properties you would like to assign to the user under a particular volume. Click **Next** to continue.





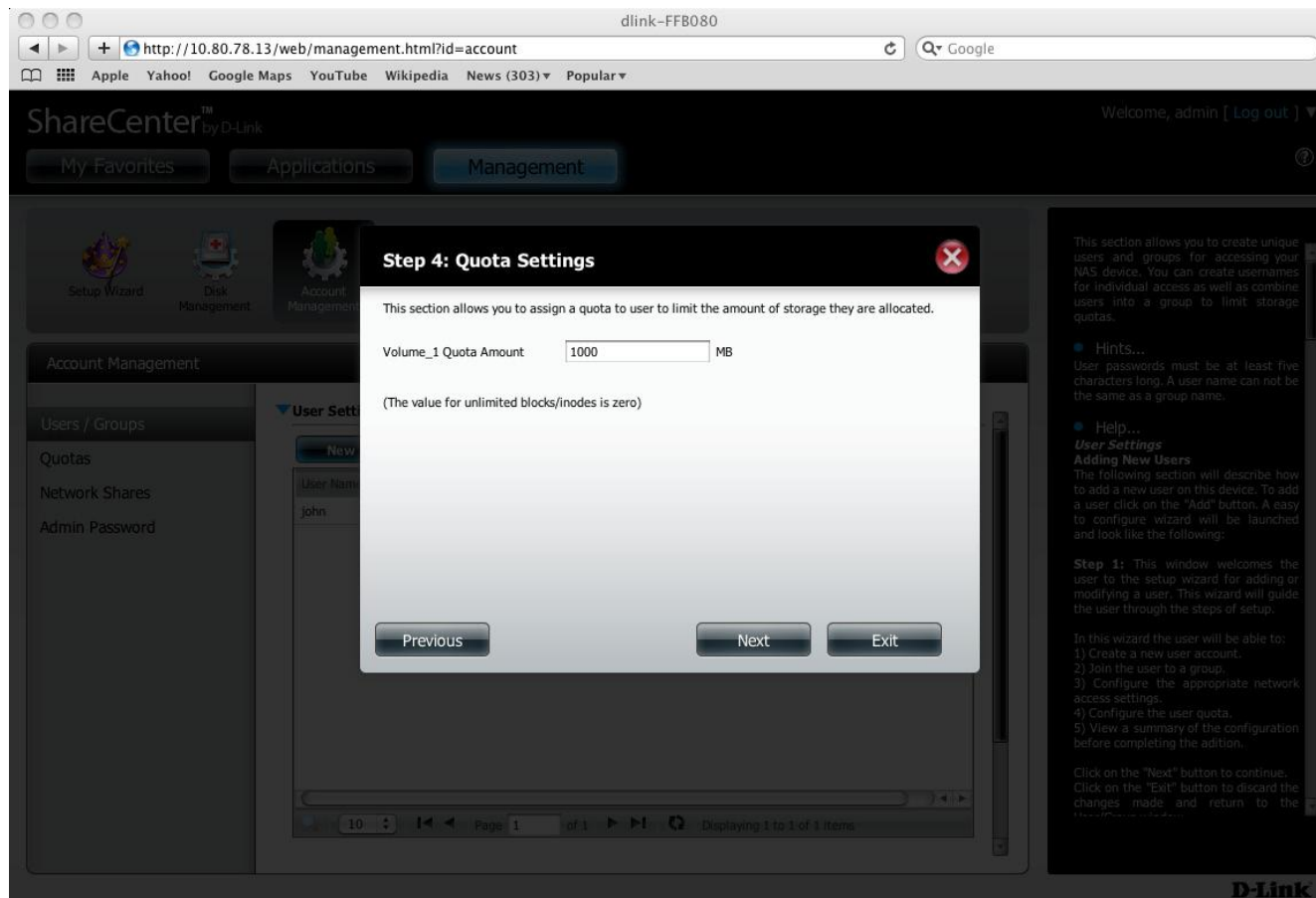
## Step 16:

Under the **Assign Privileges - Access Methods** step, check the fields you would like the user to be a member of. Click **Next** to continue.



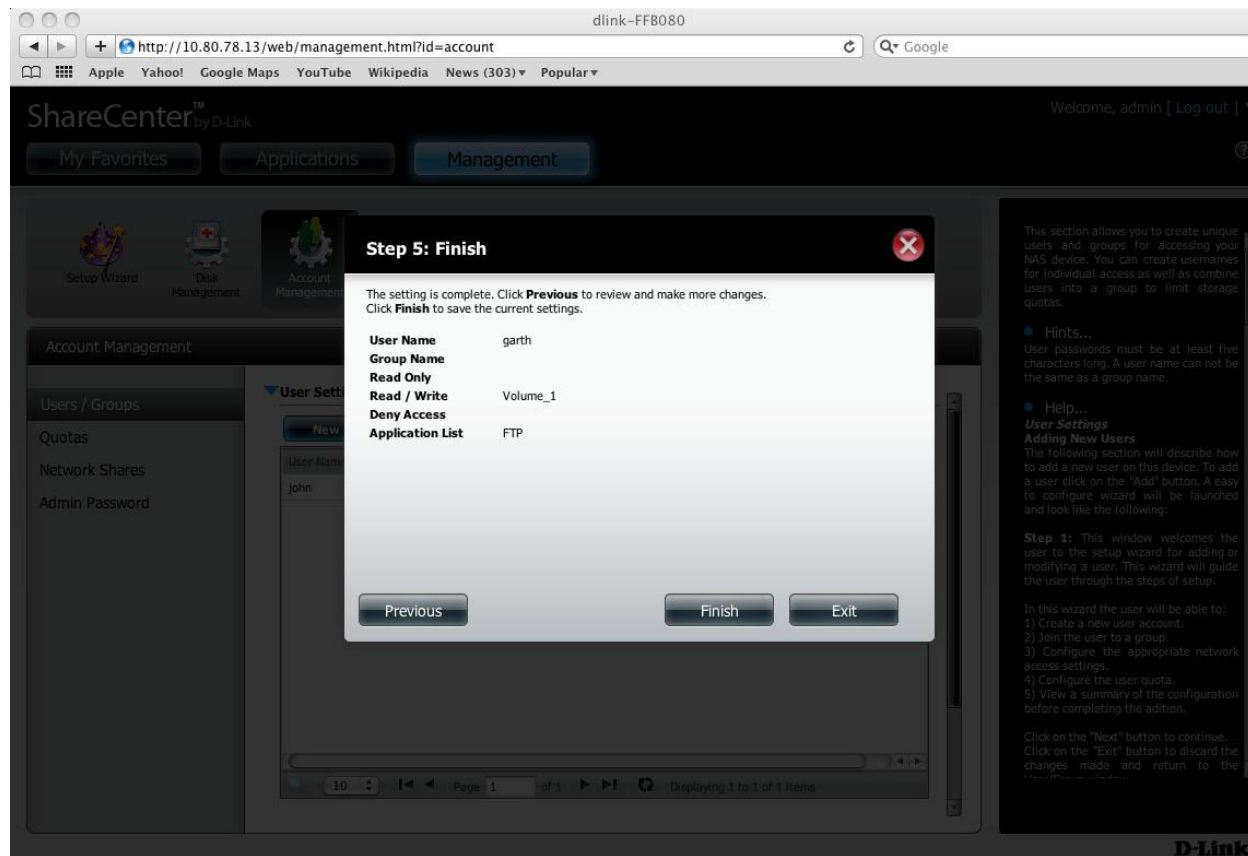
## Step 17:

Next under **Quota Settings**, give the user a fixed backup data size (in MB), and click **Next** to continue.



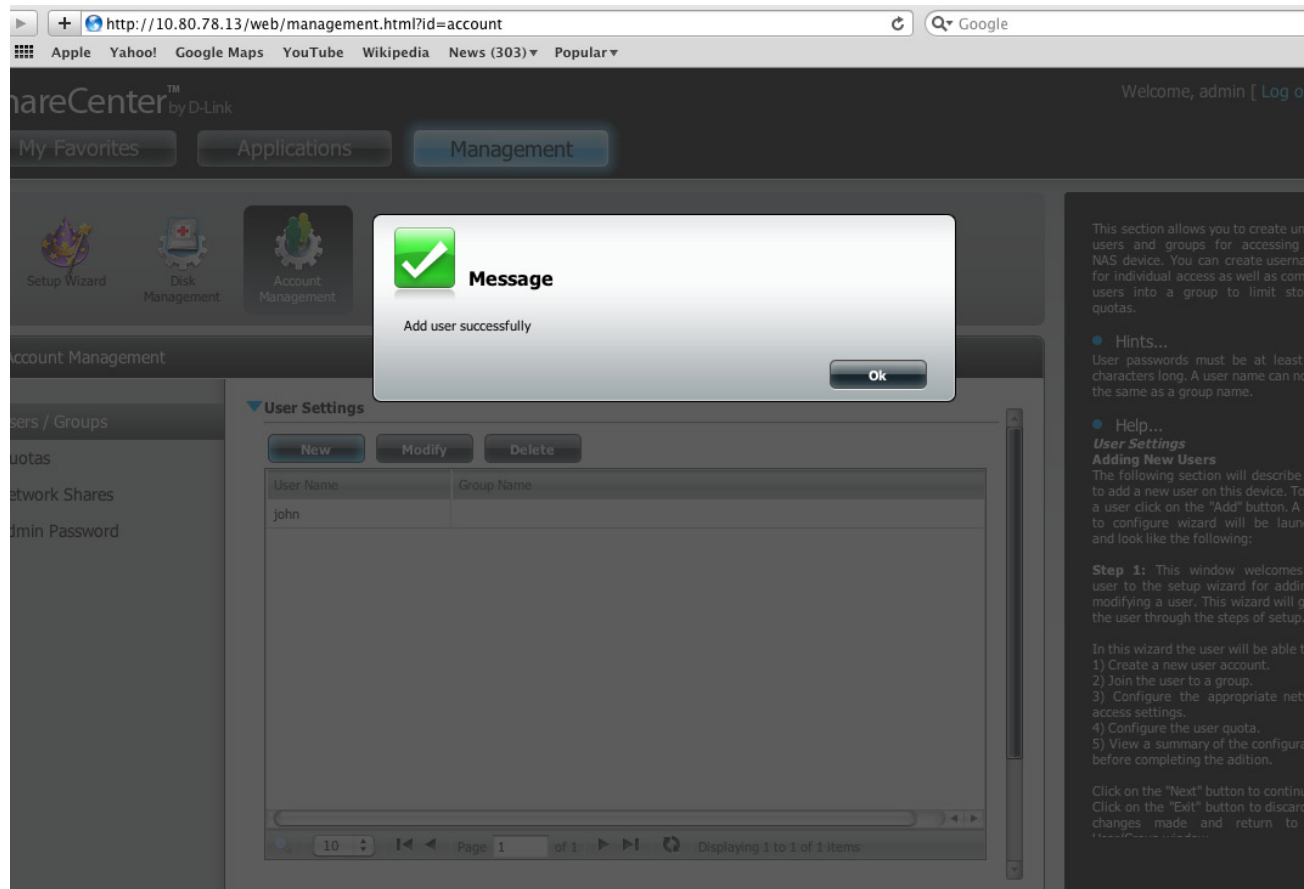
## Step 18:

The **User Setup Wizard**, is now complete. A summary will appear at the end confirming your settings. Review your settings and click **Finish** to complete the wizard.



## Step 19:

A message will appear confirming that a new user has been successfully added to the ShareCenter.



## Step 20:

On the Mac, click **Time Machine** (if it is not on the Task Bar, go to System Preferences, and under System Preferences, click Time Machine). Then click **Set Up Time Machine**.



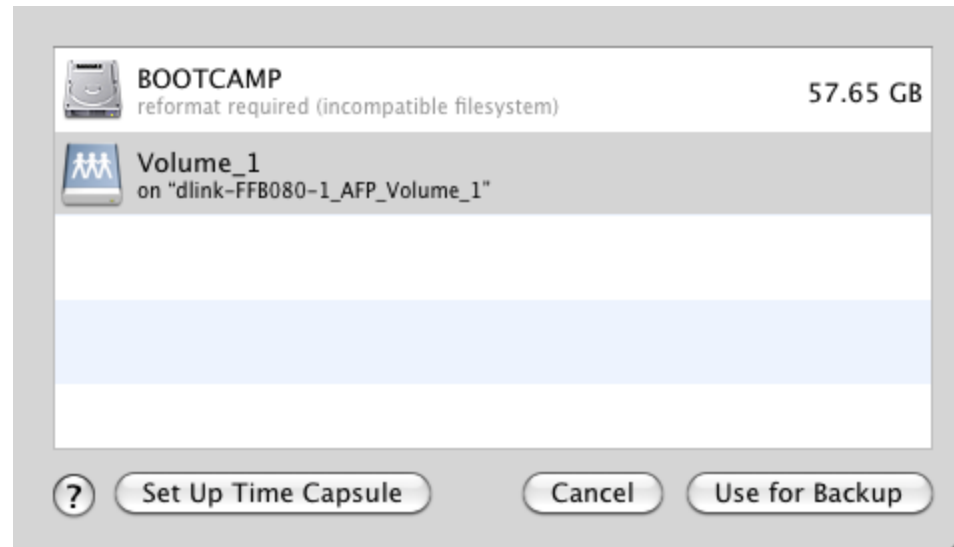
## Step 21:

In the main Time Machine window, click **Select Backup Disk**.



## 22 Time Machine How-To Guide

A new window will appear displaying a list of volumes or drives available.



### Step 22:

Select the ShareCenter NAS volume. (In this example “**Volume\_1**” is the NAS volume). Then click **Use for Backup**.

## Step 23:

Next you will be prompted to enter a **username** and **password**. Enter the username and password you created earlier in **step 13** of this guide and click **Connect**.



The image shows a macOS-style dialog box for connecting to a Time Machine server. On the left is an icon of a Time Machine disk. The main text reads: "Enter your name and password for the server 'dlink-FFB080' so that Time Machine can access it." Below this, there are two radio buttons: "Guest" (unselected) and "Registered User" (selected). There are two text input fields: "Name:" with the text "garth" and "Password:" with seven dots. At the bottom right are two buttons: "Cancel" and "Connect".

## Step 24:

Time Machine will then connect to the **ShareCenter NAS** and begin the backup process.

