

# DI-206/308 LAN-to-LAN Configuration Guide

Model: DI-206/308 ISDN Routers

Firmware Version: DI-206 v1.85, DI-308 v1.00

OS Supported: Windows 95, Windows 98, Windows 98SE, Windows Me, Windows NT 4.0 and Windows 2000.

## Introduction

To setup a LAN-LAN configuration, first ensure you have Routeman configurator installed on your PC. The current version of Routeman as at 4th July 2001 is version 1.20.11.

## Routeman Configuration

When you run Routeman it will discover DI-208 routers connection to your local area network.



Fig 1. Routeman Discovers DI-206

If the IP address is not set, you can at this stage set an appropriate IP address for the router. Enter the IP address and the mask then click on the pencil tab to save.

Double click the DI-206 from the list you like to configure, enter 'Admin' as the default password.



Fig 2. Main Configuration Screen

Click on the wizard tab to start the wizard configuration.

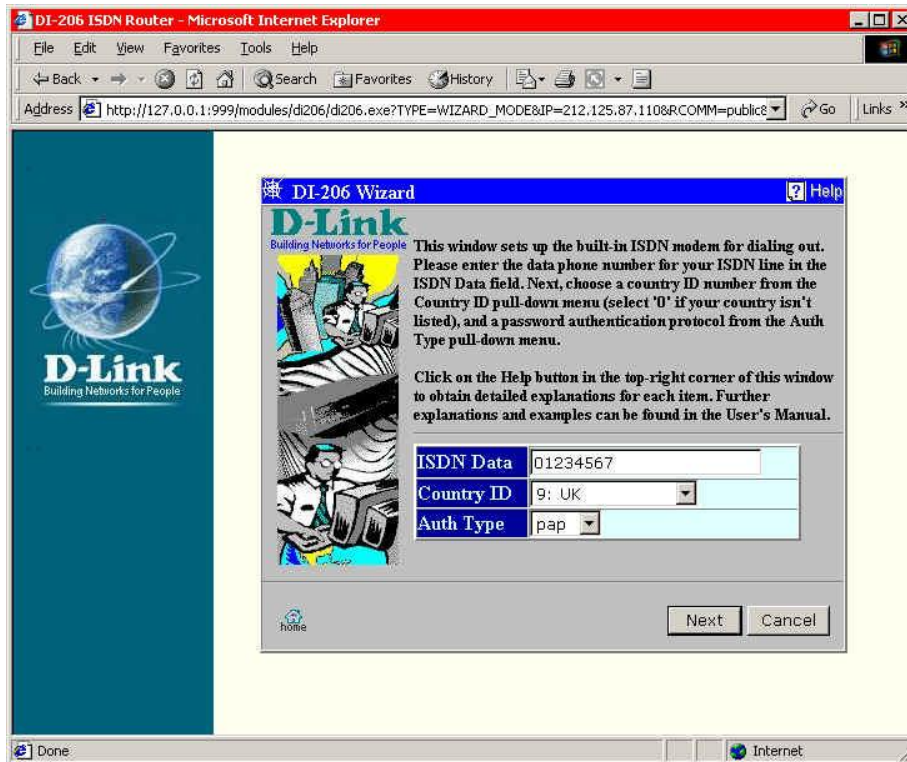


Fig 3. Router Wizard Configuration

ISDN Data - this is the local ISDN number. The ISDN number the router is connected too.

Country ID - Select appropriate country id.

Auth Type - Select PAP. Router will auto negotiate, however select PAP for default.

Select Next to continue with wizard configuration

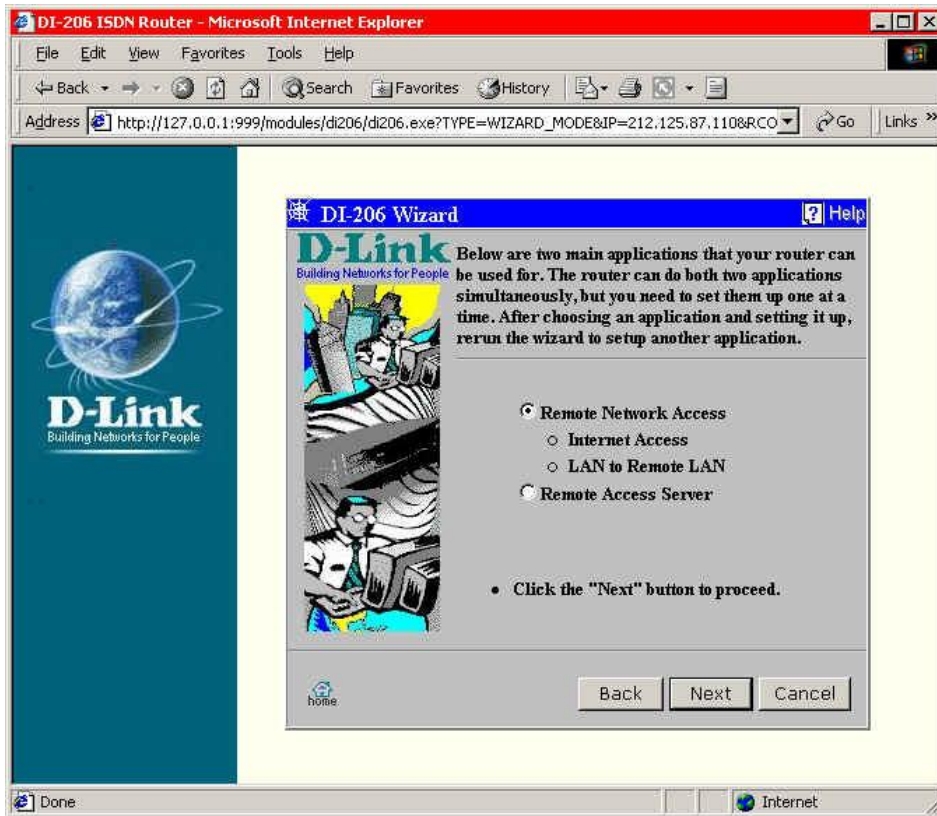


Fig 4. Connection Mode

For LAN to LAN, leave the Remote access selected and click next.

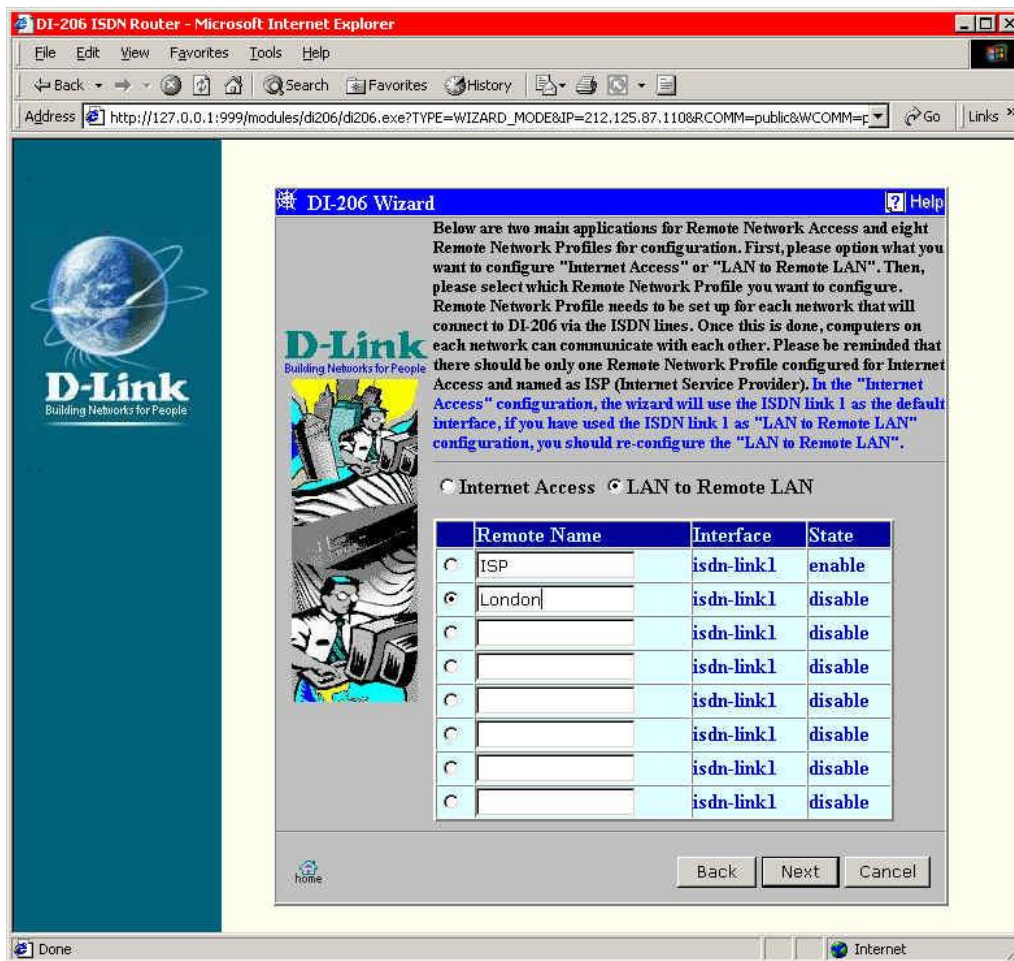


Fig 5. Remote LAN Profile Name

Change Internet Access to 'LAN to Remote LAN'. Notice the profile indicator moves to the profile below ISP. Type a suitable name for the remote network your connecting to, and select next.

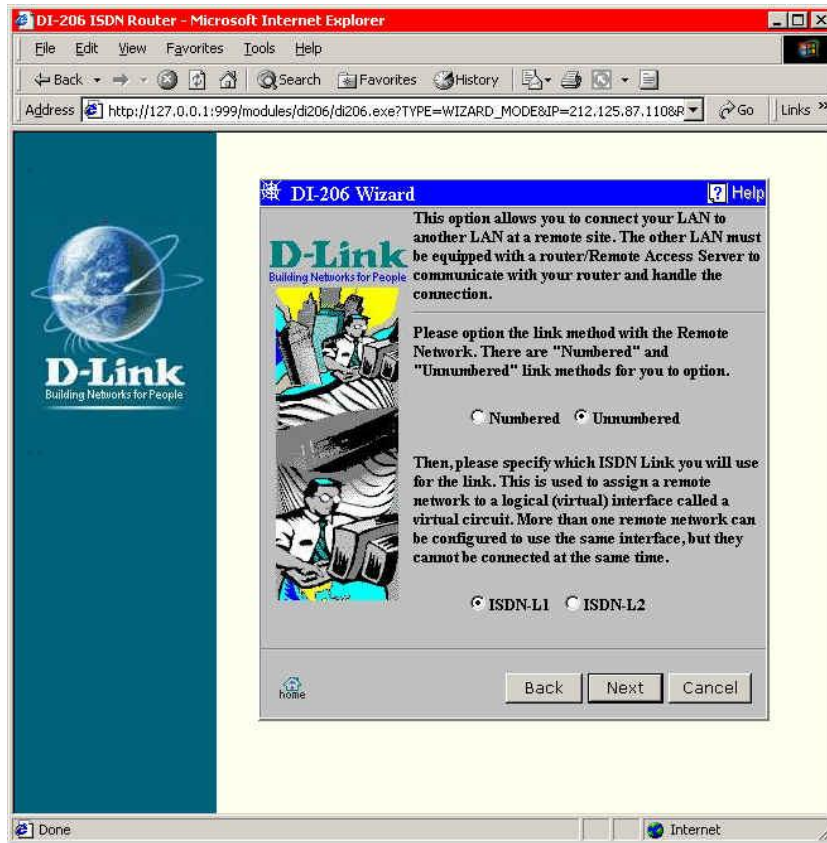


Fig 6. Link Method

In normal LAN to LAN configurations you will not use a numbered link, therefore change the link method to Unnumbered. Now select which B channel will be used to connect to this remote network, L1 or L2. Select next to continue.



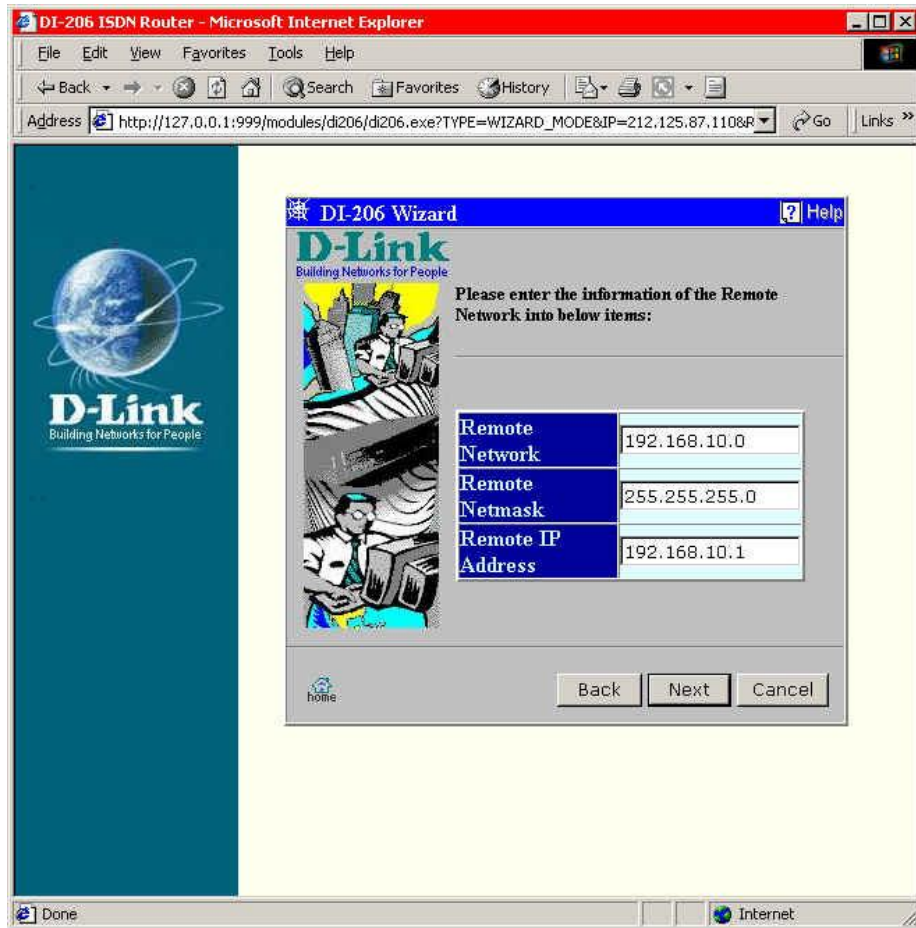


Fig 7. Remote Network Information

In fig7, you will need to setup the remote network information. The remote network option is the IP address of the remote LAN, remember that 192.168.10.0 denotes a network, now enter the remote network mask. Remote IP address in the IP address of the remote router.

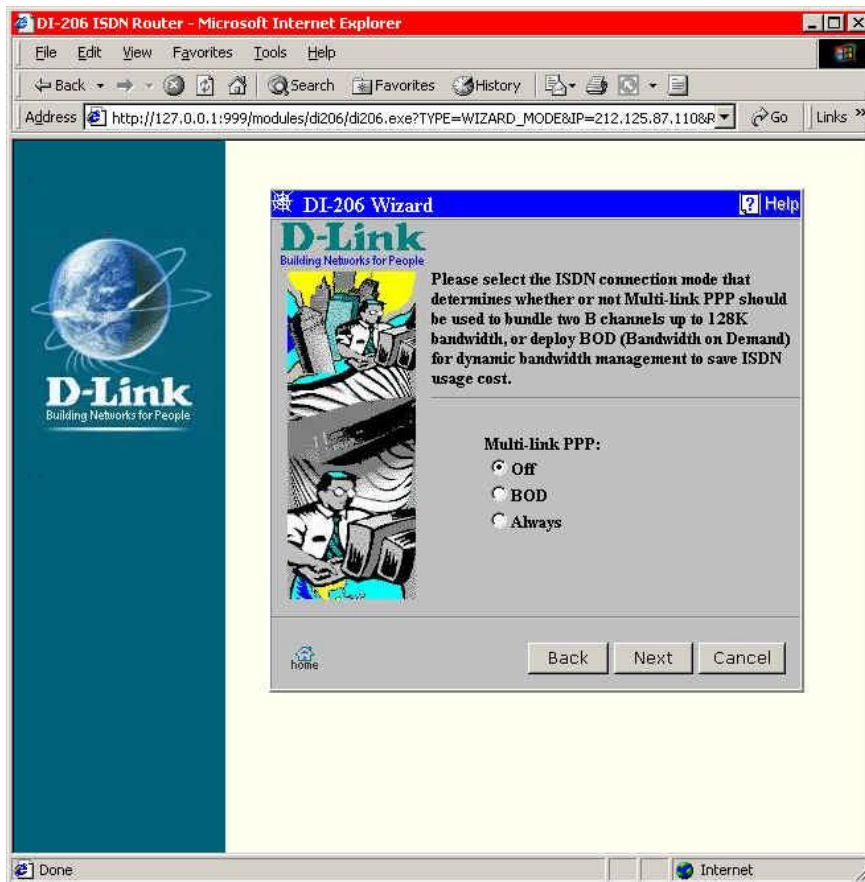


Fig 8. Now the B channels are used

Screen of fig 8 is the configuration to choose whether a single b channel is used (off), both b channels (always) or bandwidth on demand



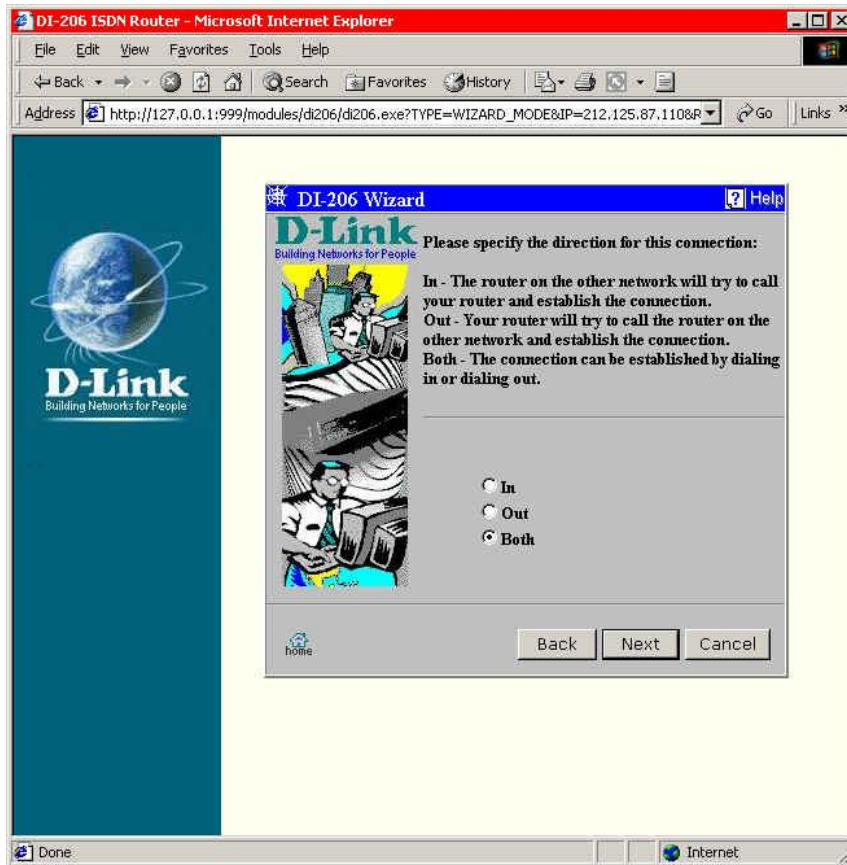


Fig 9. Dial in dial or both

You will need to set whether this router will dial out only, or if the remote router will dial in only or both. Select next, the next screen can be left as default, you do not need to change retries or dial out counts.

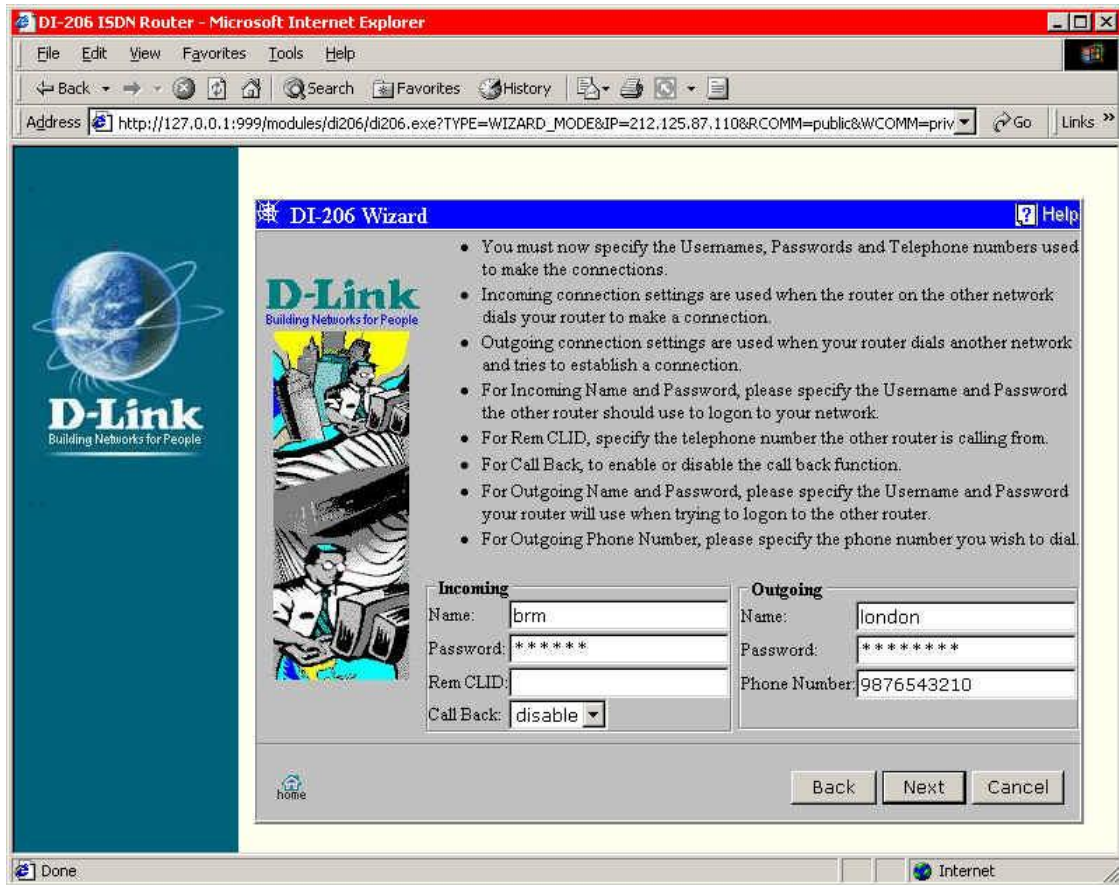


Fig 10. User name and Password Config

Enter out going and incoming user names. Here you can also configure call back if this is required.

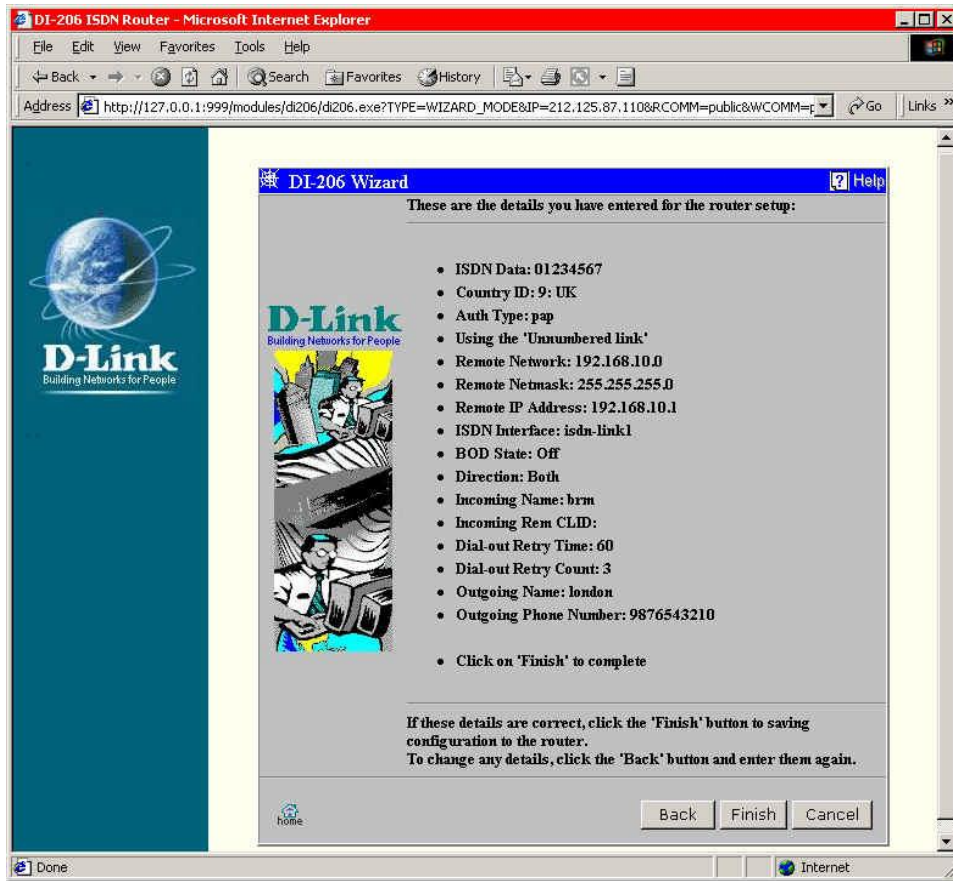


Fig 11. Final Check for Configuration

Fig 11 is the final check before router will save the settings.

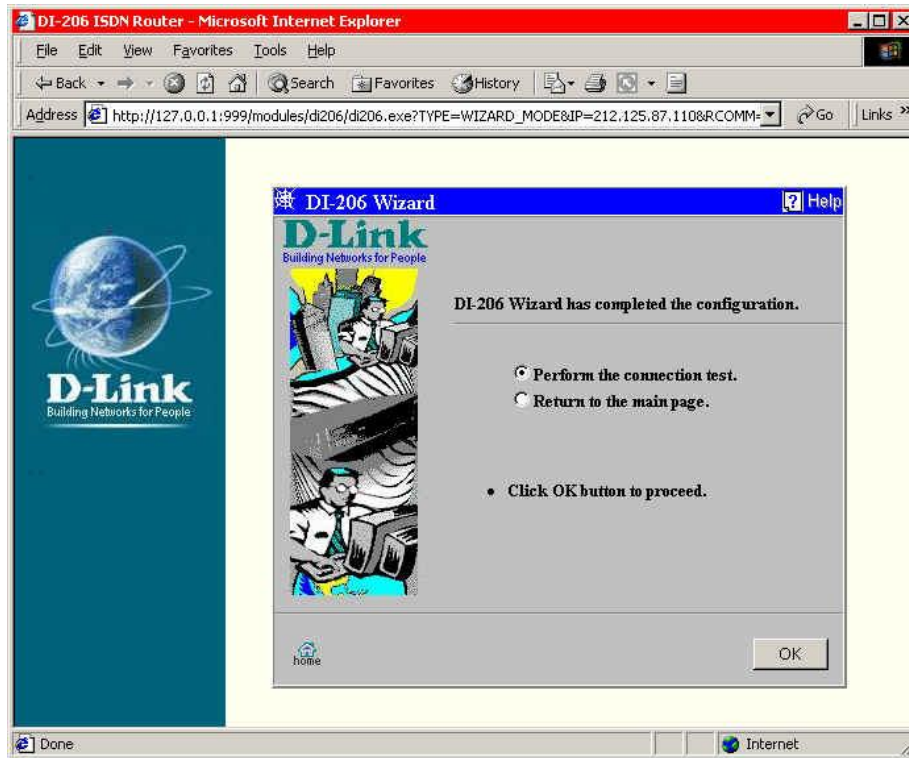


Fig 12. Connection Tests

You can select to test the configured profile to ensure it will connect to the remote router. You will see messages to indicate successful connection. LCP Up Successfully, is the final message.

~ End of Document ~