



# Install Guide

Version 1.0

DWL-8200AP

## Managed Dualband Access Point

# System Requirements:

Minimum System Requirements:

- CD-ROM Drive
- Computers with Windows, Macintosh, or Linux-based operating systems
- Installed Ethernet Adapter Internet Explorer version 6.0 or Netscape Navigator version 7.0 and above.

# Package Contents



**DWL-8200AP**  
Managed Dualband Access Point



**Power over Ethernet base unit**



**Ethernet Cable**  
(CAT5 UTP/Straight Through)



**CD-ROM**  
with Manual



**Mounting Plate**



**Power Cord**



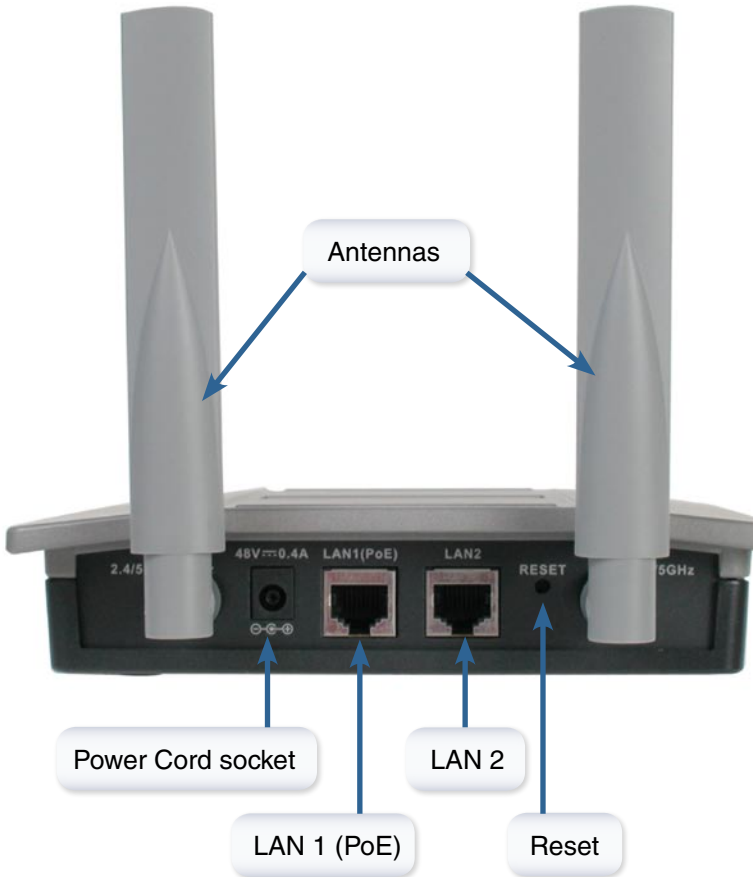
**Power Adapter-DC 48V, 0.4A**



Using a power supply with a different voltage rating will damage this product and void the warranty.

*If any of the above items are missing, please contact your reseller.*

# Installing the Hardware

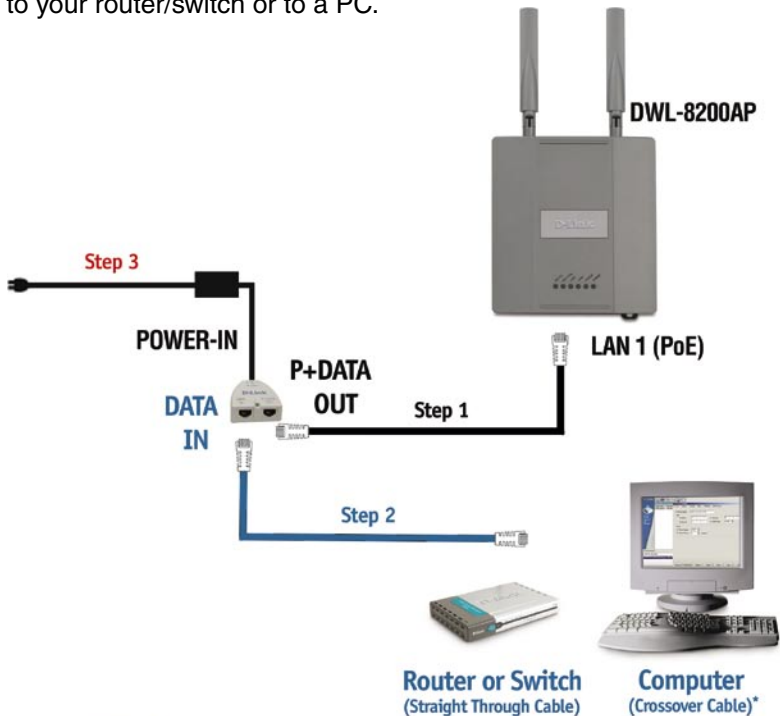


## Step 1

Connect one end of an Ethernet cable (included with your package) to the LAN 1 (PoE) port on the **DWL-8200AP**, and the other end of the Ethernet cable to the port labeled P+DATA OUT on the PoE base unit.

## Step 2

Connect another Ethernet cable from the DATA IN port on the PoE base unit to your router/switch or to a PC.



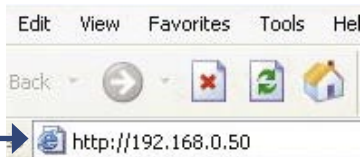
\* NOTE: A Crossover Cable is optional and may be required, depending on your PC's Ethernet Port.

## Step 3

Attach the power adapter to the connector labeled POWER IN on the PoE base unit. Attach the power cord to the power adapter and into an electrical outlet.

# Using the Setup Wizard

Open your Web browser and type `http://192.168.0.50` into the URL address box. Then press the Enter or Return key.



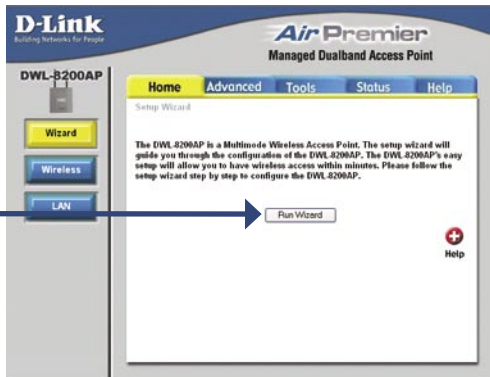
The logon pop-up screen will appear.

Type **admin** for the username and leave the password field blank.



Once you have logged in, the **Home** screen will appear.

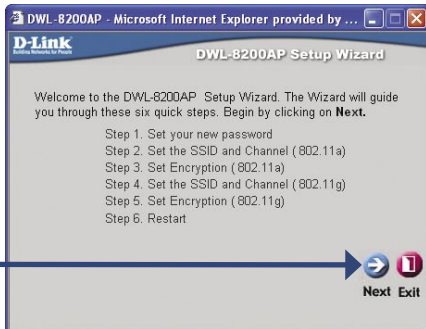
Click Run Wizard



## Welcome Screen

Follow the steps in order to configure the **DWL-8200AP**.

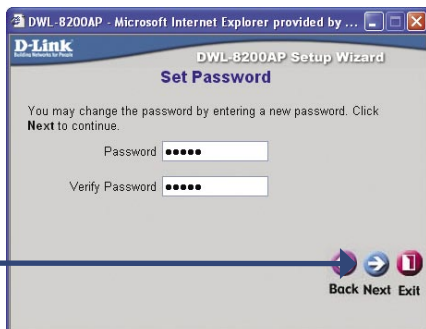
Click Next



## Setup your new password

You have the option to establish a password.

Click Next



Security level options for an **802.11a** network are as follows:

- **No Security** - continue to page 7
- **WEP** - continue to page 8
- **WPA-Personal** - continue to page 10

For **802.11a** networks please do the following:

### Set Wireless LAN 802.11a Connection

By default the **DWL-8200AP SSID** is set to **default** with a **Channel** setting of **52**.

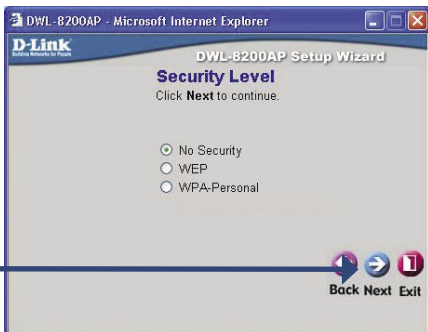
Click Next



### No Security

Select **No Security** for an **802.11a** Network.

Click Next

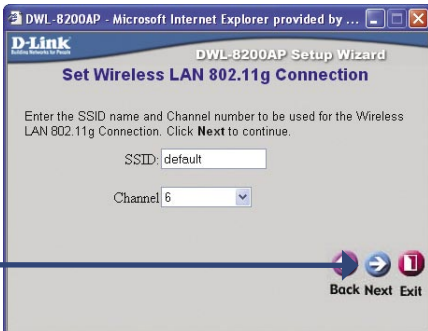


For **802.11g** networks please do the following:

### Set Wireless LAN 802.11g Connection

By default the **DWL-8200AP SSID** is set to **default** with a **Channel** setting of **6**.

Click Next



**For 802.11g Network continue to page 12.**

For **802.11a** networks please do the following:

### Set Wireless LAN 802.11a Connection

By default the **DWL-8200AP SSID** is set to **default** with a **Channel** setting of **52**.

Click Next



### WEP

Select **WEP** for an **802.11a** Network.

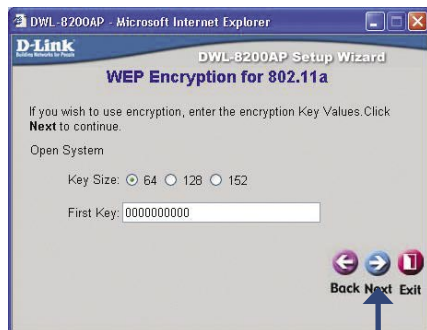
Click Next



### WEP Encryption for 802.11a

The **DWL-8200AP** is capable of three levels of encryption: 64-bit, 128-bit, and 152-bit (using only Hexadecimal). By default, encryption is disabled. You can change the encryption settings for more secure wireless communication.

Click Next



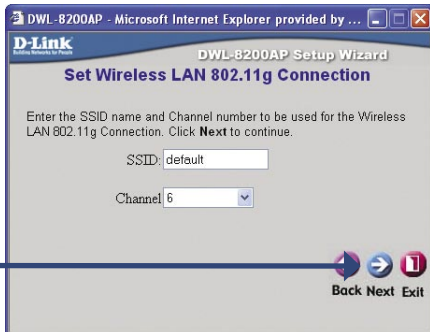


For **802.11g** networks please do the following:

### Set Wireless LAN 802.11g Connection

By default the **DWL-8200AP SSID** is set to **default** with a **Channel** setting of **6**.

Click Next



For 802.11g Network continue to page 12.

For **802.11a** networks please do the following:

### Set Wireless LAN 802.11a Connection

By default the **DWL-8200AP SSID** is set to **default** with a **Channel** setting of **52**.

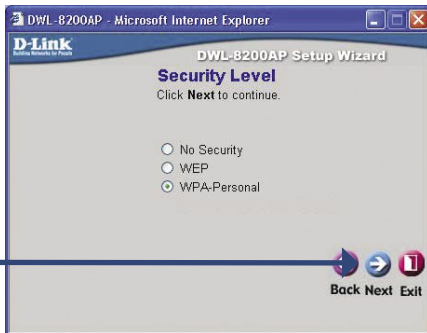
Click Next



### WPA-Personal

Select **WPA-Personal** for an **802.11a** Network.

Click Next

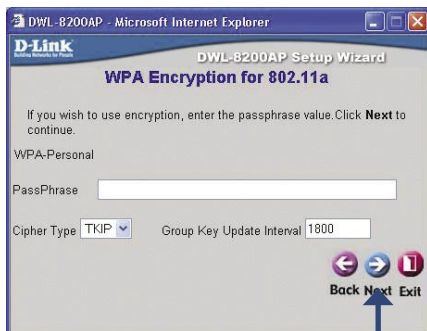


For **802.11a** networks please do the following:

### WPA Encryption for 802.11a

Provide an alphanumeric PassPhrase that is between 8 to 63 characters. By default, the Group Key Update Interval is set to 1800 seconds (30 minutes). After 1800 seconds have passed, the key will change again.

Click Next

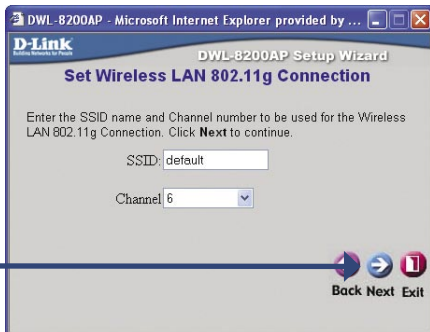


For **802.11g** networks please do the following:

### Set Wireless LAN 802.11g Connection

By default the **DWL-8200AP SSID** is set to **default** with a **Channel** setting of **6**.

Click Next



**For 802.11g Network continue to page 12.**

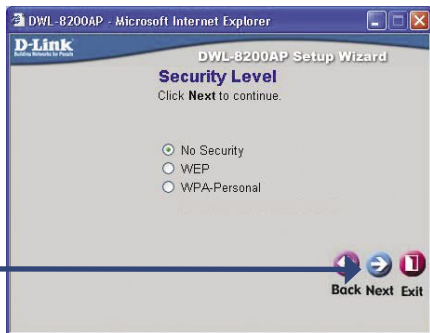
Security level options for an **802.11g** network are as follows:

- **No Security** - current page
- **WEP** - continue to page 13
- **WPA-Personal** - continue to page 14

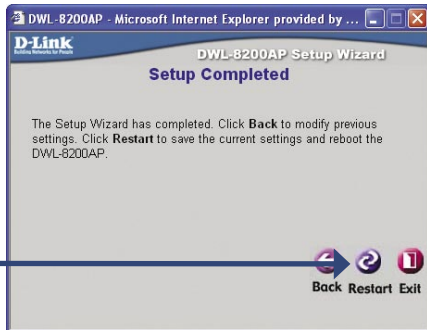
### No Security

Select **No Security** for an **802.11g** Network.

Click Next



Click Restart



**Your Setup is complete! (continue to page 15)**

**WEP**

Select **WEP** for an **802.11g** Network.

Click Next

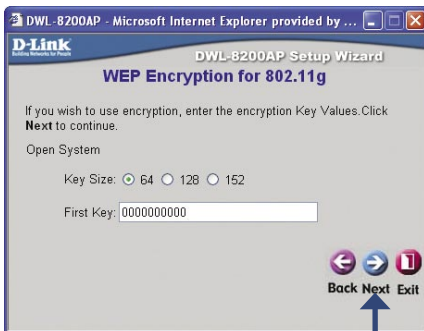


For **802.11g** networks please do the following:

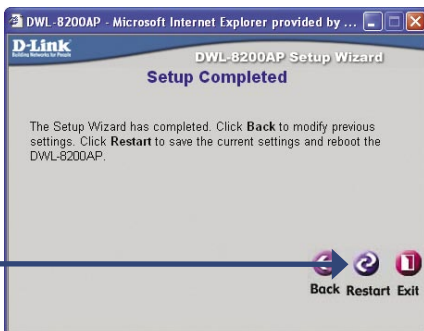
**WEP Encryption for 802.11g**

The **DWL-8200AP** is capable of three levels of encryption: 64-bit, 128-bit, and 152-bit (using only Hexadecimal). By default, encryption is disabled. You can change the encryption settings for more secure wireless communication.

Click Next



Click Restart

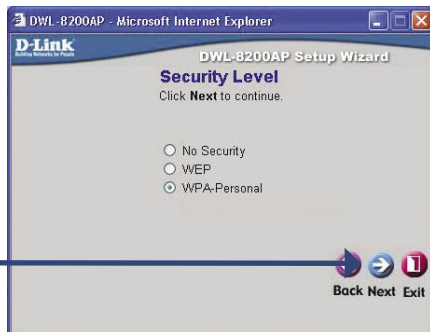


**Your Setup is complete! (continue to page 15)**

## WPA-Personal

Select **WPA-Personal** for an **802.11g** Network.

Click Next

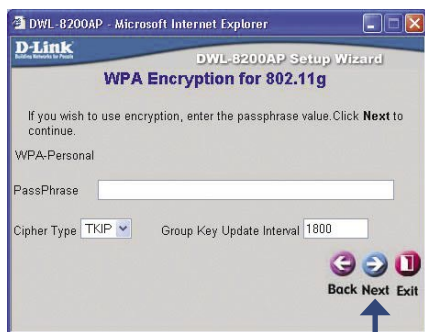


For **802.11g** networks please do the following:

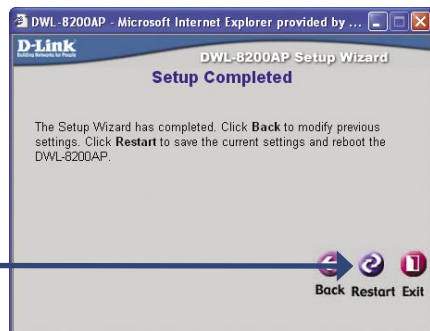
## WPA Encryption for 802.11g

Provide an alphanumeric PassPhrase that is between 8 to 63 characters. By default, the Group Key Update Interval is set to 1800 seconds (30 minutes). After 1800 seconds have passed, the key will change again.

Click Next



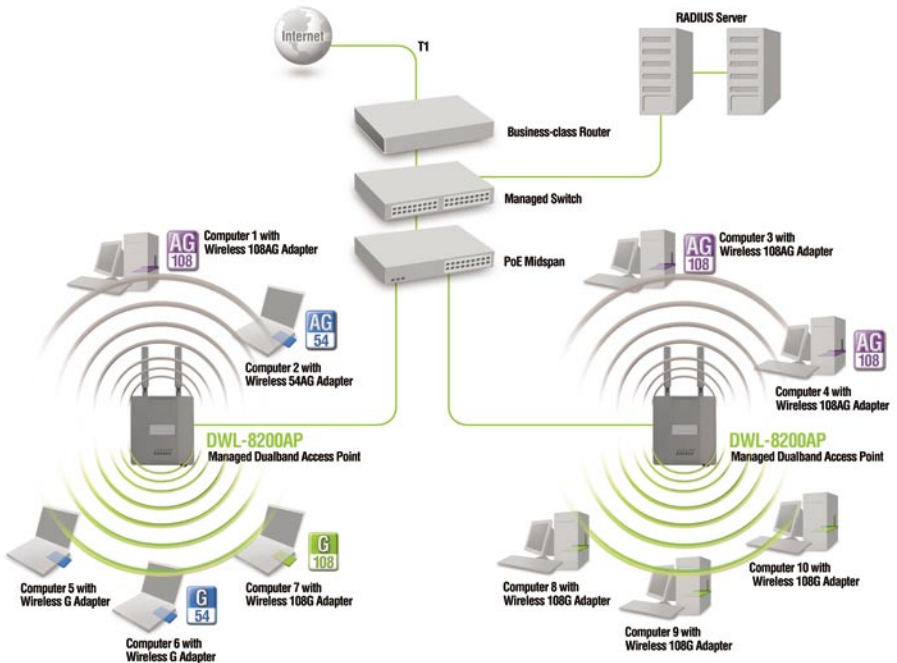
Click Restart



**Your Setup is complete! (continue to page 15)**

# Your Setup is Complete!

When you have completed the steps in this Quick Installation Guide, your connected network should look similar to this:



\* Maximum Wireless signal rate derived from IEEE Standard 802.11a and 802.11g specifications. Actual data throughput will vary. Network conditions and environmental factors, including volume of network traffic, building materials and construction, and network overhead lower actual data throughput rate.

# Technical Support

D-Link's website contains the latest user documentation and software updates for D-Link products.

D-Link provides free technical support for customers within the United States and Canada for the duration of the product's warranty period.

U.S. and Canadian customers can contact D-Link Technical Support through our website or by phone.

## United States

### Telephone

(888) 843-6100

Monday to Friday 8:00am - 5:00pm

### World Wide Web

<http://support.dlink.com>

### E-mail

[support@dlink.com](mailto:support@dlink.com)

## Canada

### Telephone

(800) 361-5265

Monday through Friday, 7:30am to 12:00am EST.

### World Wide Web

<http://support.dlink.ca>

### E-mail

[support@dlink.ca](mailto:support@dlink.ca)



Version 1.0

©2005 D-Link Corporation/D-Link Systems, Inc. All rights reserved. D-Link, the D-Link logo, and AirPremier are trademarks or registered trademarks of D-Link Corporation or its subsidiaries in the United States and other countries. Other trademarks are the property of their respective owners. All references to speed are for comparison purposes only. Product specifications, size, and shape are subject to change without notice, and actual product appearance may differ from that depicted herein.

Visit [www.dlink.com](http://www.dlink.com) for more details.

DWL-8200AP 06132005