

D-Link

Quick Installation Guide

This product works with the following operating system software: **Windows XP, Windows 2000, Windows Me, Windows 98se**



DWL-AG650

AirXpert™ Tri-Mode Dualband
Wireless Cardbus Adapter

Before You Begin

You must have at least the following:

- A laptop/notebook computer with an available 32-bit Cardbus slot
- At least a 500 MHz processor and 128MB of memory
- Cardbus Controller properly installed and working in the laptop computer
- An 802.11a, 802.11b or 802.11g Access Point (for Infrastructure Mode) or another 802.11a, 802.11b, or 802.11g wireless adapter (for Ad-Hoc; Peer-to-Peer networking mode.)

Check Your Package Contents

These are the items included with your DWL-AG650 purchase:



DWL-AG650 AirXpert Tri-Mode Dualband Wireless Cardbus Adapter



CD-ROM (containing Drivers, Manual and Warranty)

If any of the above items are missing, please contact your reseller.

1 Insert the D-Link CD Into Your Laptop PC

Turn on the computer and **Insert** the **DWL-AG650 Driver CD** in the CD-ROM drive.

The step-by-step instructions that follow are shown in **Windows XP**. The steps and screens are similar for other Windows operating systems



Do **NOT** install the **DWL-AG650 Cardbus Adapter** into your computer before installing the driver software from the **D-Link CD!**

1

Continued...

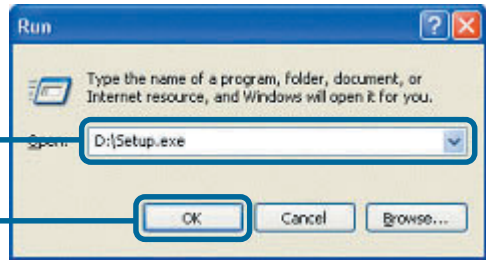
The Install Screen will appear.


Click **Install Driver**



If the CD Autorun function does not automatically start on your computer, go to **Start > Run** and type **"D:\Setup.exe."** If it does start, proceed to the next screen.

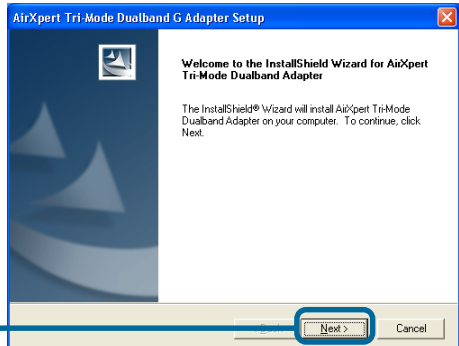
Type **"D:\Setup.exe."**



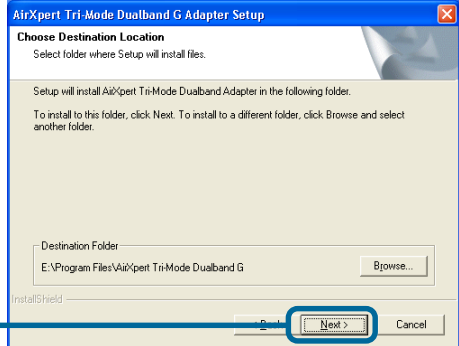
 **The letter "D" represents the letter of the CD-ROM drive. Your CD-ROM drive may be a different drive letter.**

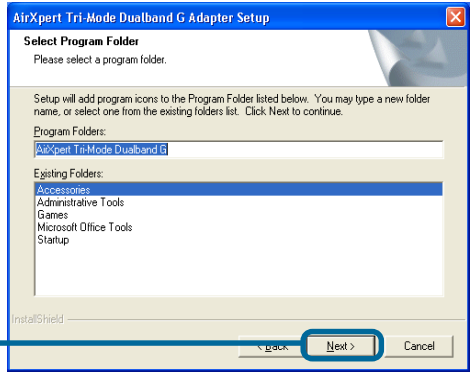
Click **OK**

Click **Next**

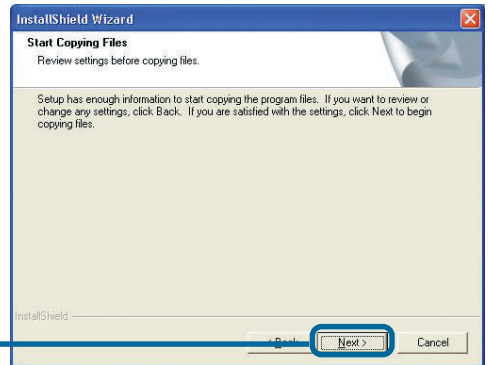


Click **Next**

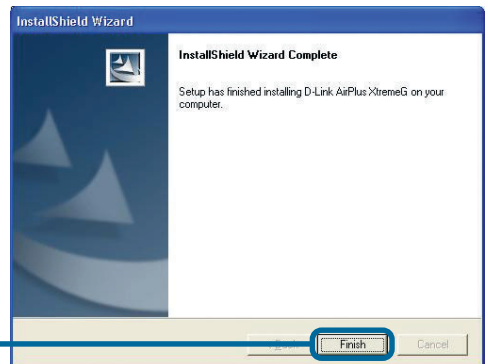




Click Next



Click Next



Click Finish

Shut down your computer

2 Installing the DWL-AG650 Wireless Cardbus Adapter in Your Computer

- A. Make sure to turn off the laptop computer.
- B. Locate the Cardbus slot on your laptop computer.



- C. Gently insert the DWL-AG650 into the Cardbus slot in your laptop computer (as shown.)

Link/Activity LED

Indicates that the DWL-AG650 is properly installed when the computer is on and blinks when data is being transmitted

32-bit connector

This is the connector that fits into the Cardbus slot of your laptop.



Antenna

Used to wirelessly connect to 802.11a/b or g networks.

3

Restart Your Computer

When you restart your computer this **Found New Hardware Wizard (Windows XP)** screen will appear:

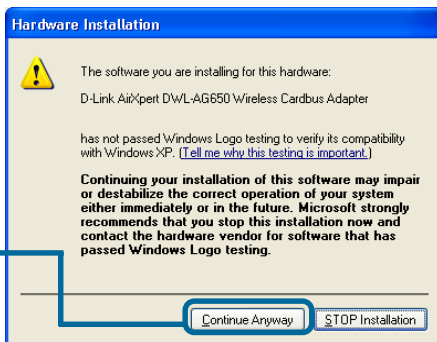
Select **Install the software automatically (Recommended)**

Click **Next**



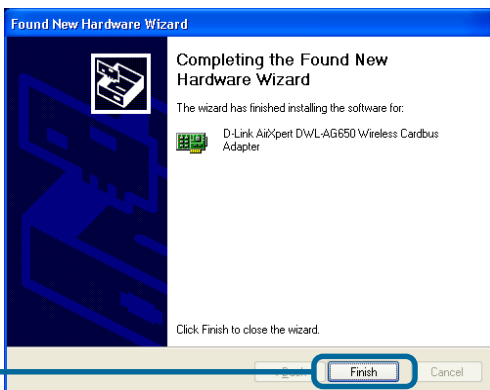
Warning: For Windows XP: This **Hardware Installation** alert screen may appear after the desktop computer restarts.

Click **Continue Anyway** to finalize the installation




Warning: The D-Link driver software for this device is undergoing Windows Logo testing. Microsoft certification is pending.

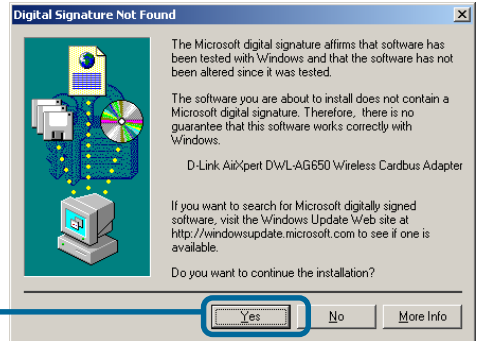
Click **Finish** to finalize the installation.




3 Continued...

 **For Windows 2000, this Digital Signature Not Found screen may appear after your computer restarts.**

Click Yes to finalize the installation.

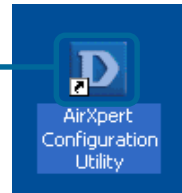


 **The D-Link driver software for this device is undergoing Windows Logo testing. Microsoft certification is pending.**

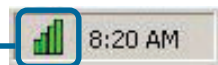
4 Your Installation is Complete!

After you've continued in Windows XP, 2000, ME, or 98SE, the D-Link **AirXpert DWL-AG650 Configuration Utility** will automatically start and the utility icon will appear in the bottom right hand corner of the desktop screen (systray). **If this icon appears GREEN, then you have successfully installed the DWL-AG650, are connected to a wireless network and are ready to communicate!**

If the utility icon does not appear, double-click the **shortcut icon** that has appeared on your desktop.



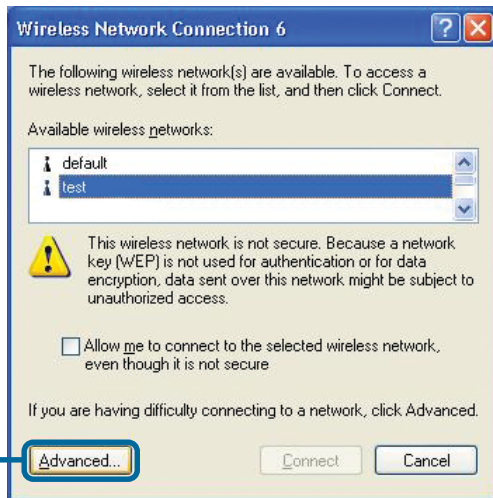
Double-click the **utility icon** to use the configuration utility.



Appendix

For Windows XP, if you wish to use the AirXpert utility, please do the following steps.

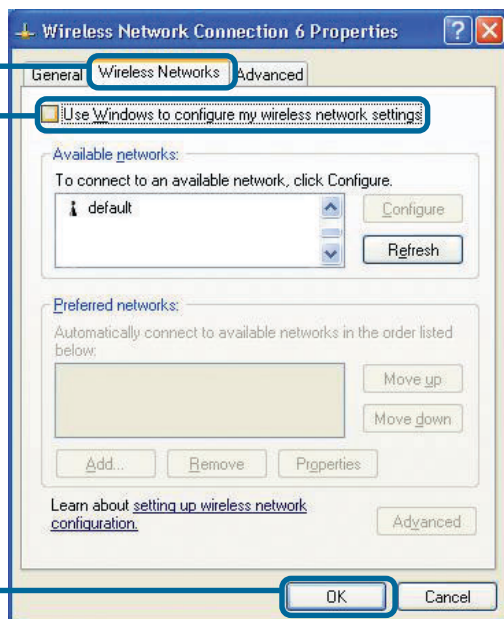
Click the **XP Networking icon** to use the Zero Configuration Wireless Settings.



Click **Advanced**

Click **Wireless Networks**

Uncheck "Use Windows to configure my wireless network settings."



Click **OK**

Appendix (Continued)

Using the Configuration Utility

A. Status: Displays the MAC Address of the Access Point that is associated with the DWL-AG650.

B. SSID: The Service Set Identifier is the name assigned to the wireless network. The factory SSID setting is set to **default**.

C. Frequency: Displays the current frequency used by the current connection to the Access Point.

D. D-Link Air Xpert Utility

Link Info (A)

Configuration (B)

Encryption (C)

Site Survey (F)

About (H)

Status: Associated BSSID=00-40-05-DF-09-51

SSID: testlab

Frequency: 2412 MHz

Wireless Mode: Infrastructure

Encryption: WEP Disable

Tx Rate: 11 Mbps

Channel: 1

Rescan

Link Quality/Signal Strength

Link Quality: 83%

Signal Strength: 100%

Data Rate

Transmit: 2 Kbps

Receive: 0 Kbps

D. Wireless Mode: The factory setting is set to **Infrastructure**. Ad-Hoc mode is used for peer-to-peer networking.

E. Encryption: Displays the current encryption status of the wireless connection.

F. TxRate: The default setting is **Auto**; meaning, TxRate settings are automatically determined by the DWL-AG650 depending on the distance from the access point.

G. Channel: Displays the channel information. By default, the channel is set to 6 and selection is automatically determined by the DWL-AG650.

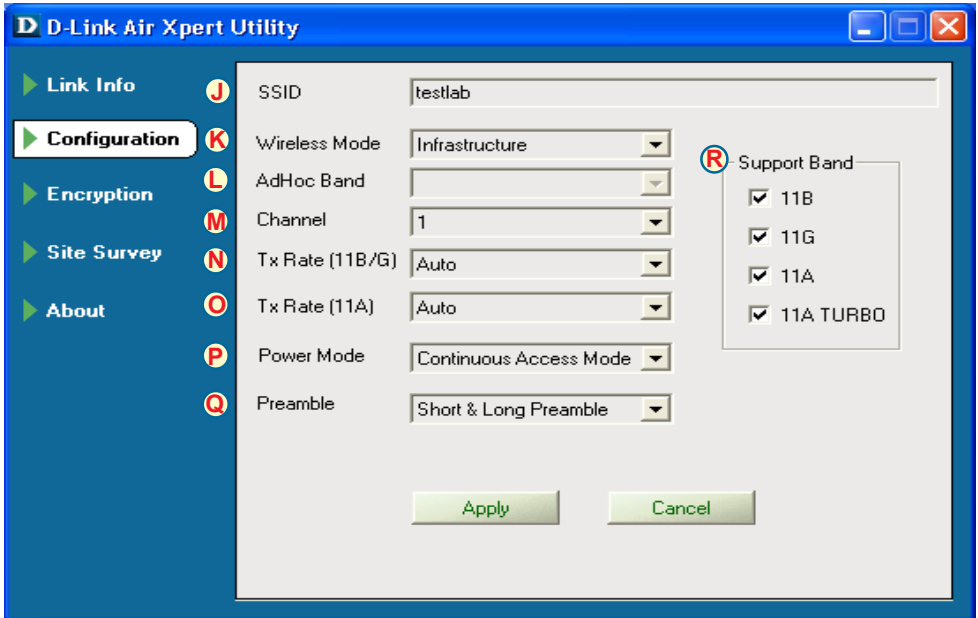
H. Link Quality / Signal Strength: Displays the Link Quality for the DWL-AG650 wireless connection to the access point. The Signal Strength represents the wireless signal between the access point and the DWL-AG650. The percentage coincides with the graphical bar.

I. Data Rate: Graphically displays the statistics of data transmitted and received.

J. SSID: The Service Set Identifier is the name assigned to the wireless network. The factory SSID setting is set to **default**. Make changes here to match the SSID on existing Wireless Router or Access Point.

K. Wireless Mode: The factory setting is set to **Infrastructure**. Ad-Hoc mode is used for peer-to-peer networking.

L. Ad-Hoc Band: Specifies the wireless bandwidth used whether 802.11a/b/g when setting up an Ad-Hoc network.



M. Channel: By default, the channel is set to **6**. Channel selection is automatically determined by the DWL-AG650 depending on the channel setting of the access point selected for association. To change the channel settings, the **Wireless Mode** must be set to **Ad-hoc**.

N. TxRate (11b/g): You can adjust the transmission rate of the 802.11b and 802.11g band to get the best signal possible depending on your usage and your environment.

O. TxRate (11a): You can adjust the transmission rate of the 802.11a band to get the best signal possible depending on your usage and your environment.

P. Power Mode: By default, Power Mode is set to **Continuous Access Mode**. **Continuous Access Mode** — this default setting consumes the most power. **Maximum Power Save** — this setting consumes the least power. **Power Save** — this setting consumes a moderate amount of power.

Q. Preamble: The default setting is set to **“Short & Long Preamble.”** The preamble setting must match the preamble setting of the wireless router or access point in order to connect.

R. Support Band: By default, the adapter will scan & connect to an 802.11a/b/g network. You also have the option to scan specific types of wireless networks.

IP Address Configuration

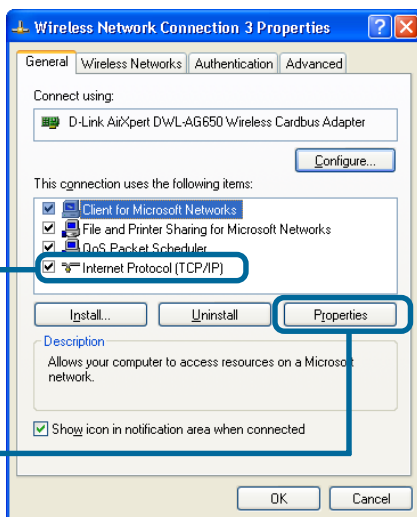
To connect to a network, **make sure the proper network settings are configured for DWL-AG650.**

For Microsoft Windows XP:

Go to **Start > right click on My Network Places > select Properties > Right Click and Select Properties** on the **Network Connection** associated with the DWL-AG650.

Click **Internet Protocol (TCP/IP)**

Click **Properties**



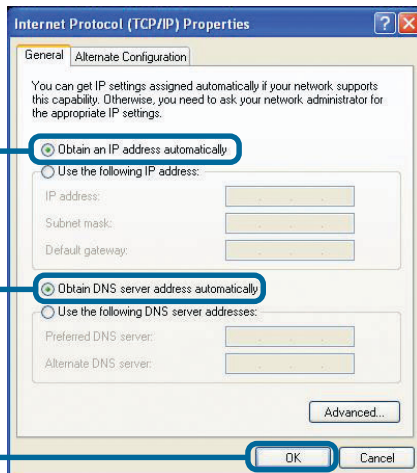
Dynamic IP address setup

Used when a **DHCP server** is available on the local network. (i.e. Router)

Select **Obtain an IP address automatically** (if the Wireless Router or Access Point has DHCP server enabled)

Select **Obtain DNS server address automatically**

Click **OK**



Static IP address setup

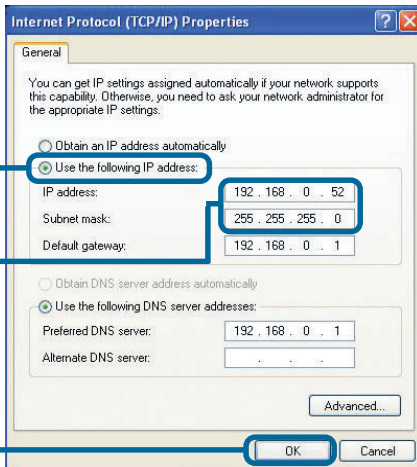
Used when a **DHCP server** is not available on the local network.

Select **Use the following IP address**

IP address: 192.168.0.52
Subnet mask: 255.255.255.0

Input a static IP address in the same range as the Wireless Router or Access Point.

Click **OK**

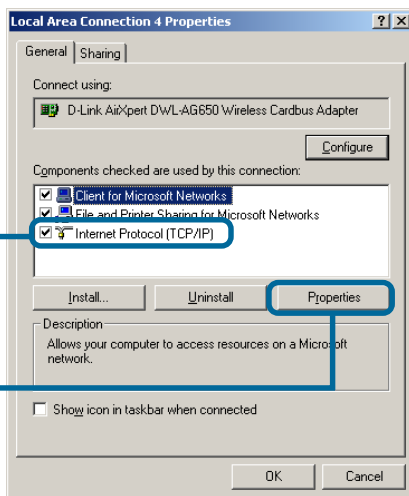


For Windows 2000 users:

Go to **Start > Settings > Network and Dial-up Connections > Right Click and Select Properties** on the **Local Area Connection** associated with the DWL-AG650 > select **Properties**

Click **Internet Protocol (TCP/IP)**

Click **Properties**



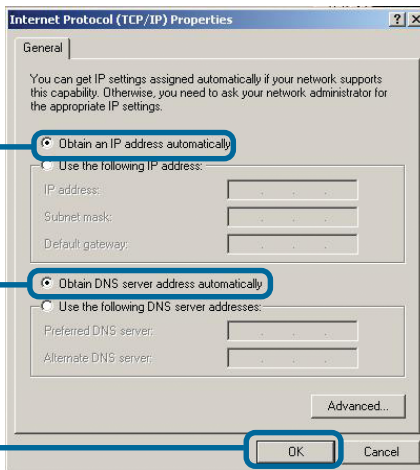
Dynamic IP address setup

Used when a **DHCP server** is available on the local network. (i.e. Router)

Select **Obtain an IP address automatically** (if the Wireless Router or Access Point has DHCP server enabled)

Select **Obtain DNS server address automatically**

Click **OK**



Static IP address setup

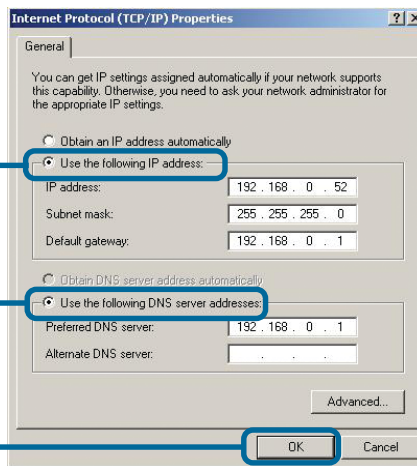
Used when a **DHCP server** is not available on the local network.

Select **Use the following IP address**

IP address: **192.168.0.52**
Subnet mask: **255.255.255.0**

Input a static IP address in the same range as the Wireless Router or Access Point.

Click **OK**



Technical Support

You can find software updates and user documentation on the D-Link website.

D-Link provides free technical support for customers within the United States and within Canada for the duration of the warranty period on this product.

U.S. and Canadian customers can contact D-Link technical support through our website, or by phone.

Tech Support for customers within the United States:

D-Link Technical Support over the Telephone:

(877) 453-5465

24 hours a day, seven days a week.

D-Link Technical Support over the Internet:

<http://support.dlink.com>

email:support@dlink.com

Tech Support for customers within Canada:

D-Link Technical Support over the Telephone:

(800) 361-5265

Monday to Friday 8:30am to 9:00pm EST

D-Link Technical Support over the Internet:

<http://support.dlink.ca>

email:support@dlink.ca

