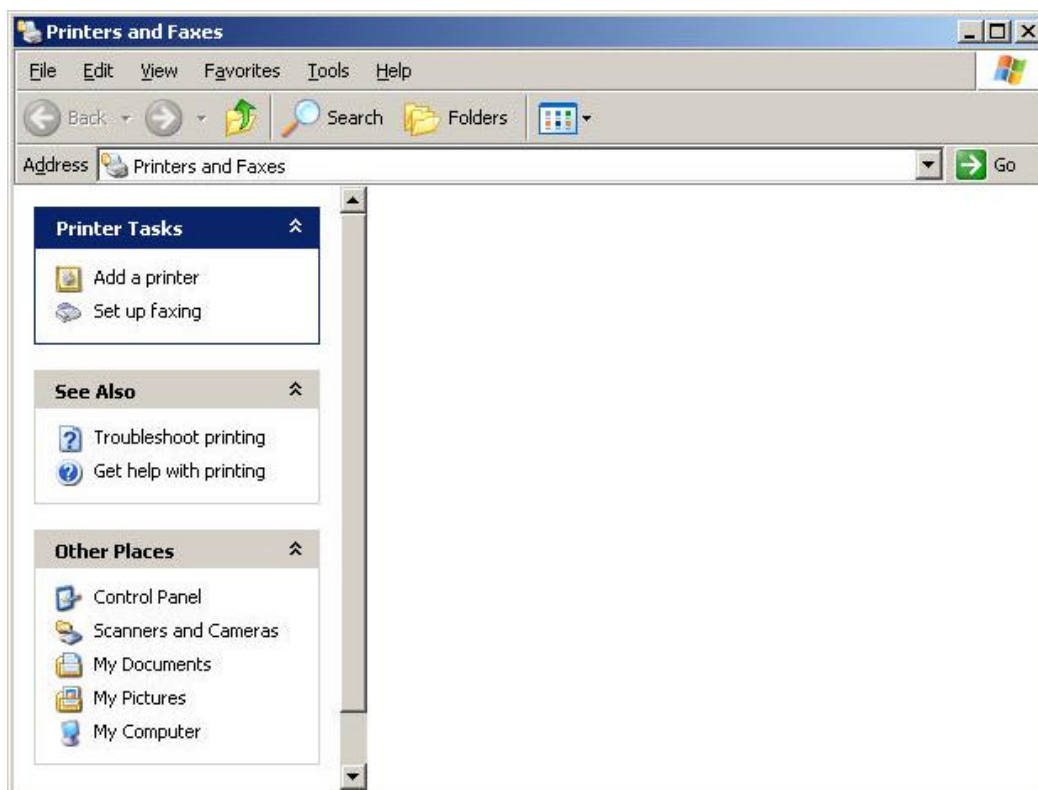


How to Install D-Link Print Server in the Microsoft Windows XP TCP/IP environment

To create a TCP/IP remote printer Microsoft TCP/IP printing support must be installed. The procedure is as follows.

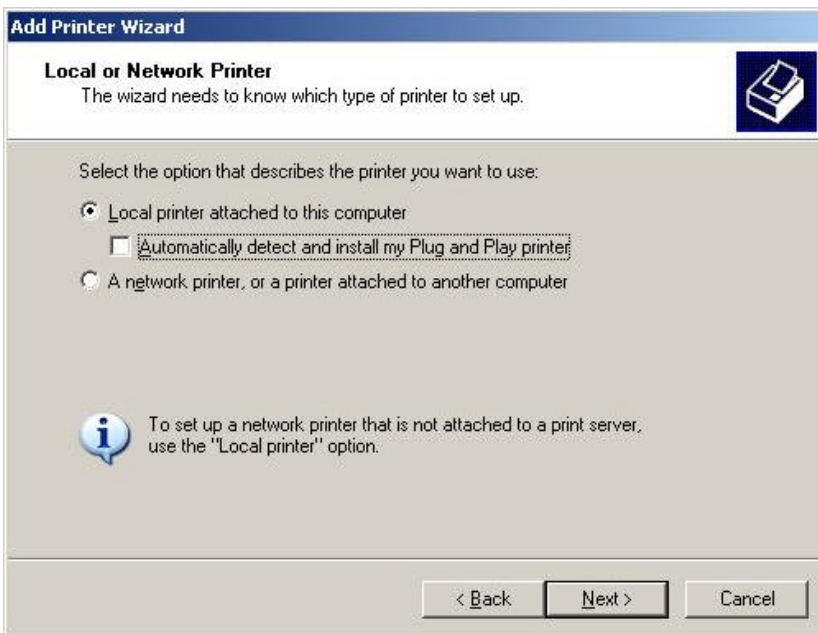
1. To start the Add Printer Wizard, Go into Start → Go into Control Panel → Printers and Faxes. Click on Add a printer.



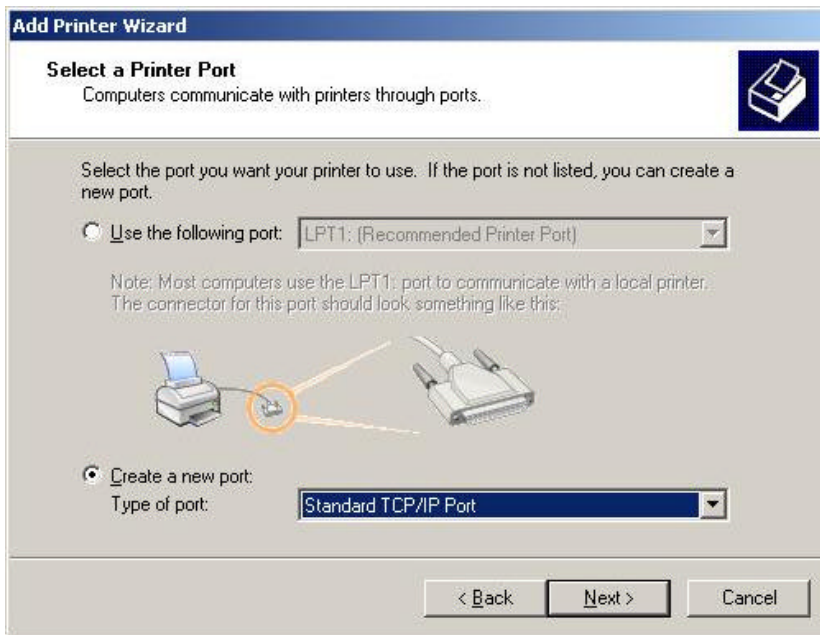
2. The 'Add printer wizard' should then come up. Click Next.



3. Select 'Local printer attached to this computer' and untick 'Automatically detect and install my Plug n Play printer' as the printer will not be plugged in directly to the PC. Click Next.



4. The wizard will then ask you to Select a Printer Port. Select 'Create a new port'. Select Standard TCP/IP Port. Click Next.



5. The 'Add Standard TCP/IP Printer Port Wizard' should then come up. Click Next.



- Specify the IP address of the print server. An arbitrary 'Port name' will be generated by default and this is based on the IP address specified. Please use different names if you are installing multiple ports for the print server like the DP-100/300. This is because Windows XP will only allow a unique 'Port Name'. You can use something like i.e. 192.168.0.10_P1, 192.168.0.10_P2, etc. Click Next.

Add Standard TCP/IP Printer Port Wizard

Add Port
For which device do you want to add a port?

Enter the Printer Name or IP address, and a port name for the desired device.

Printer Name or IP Address: 192.168.0.10

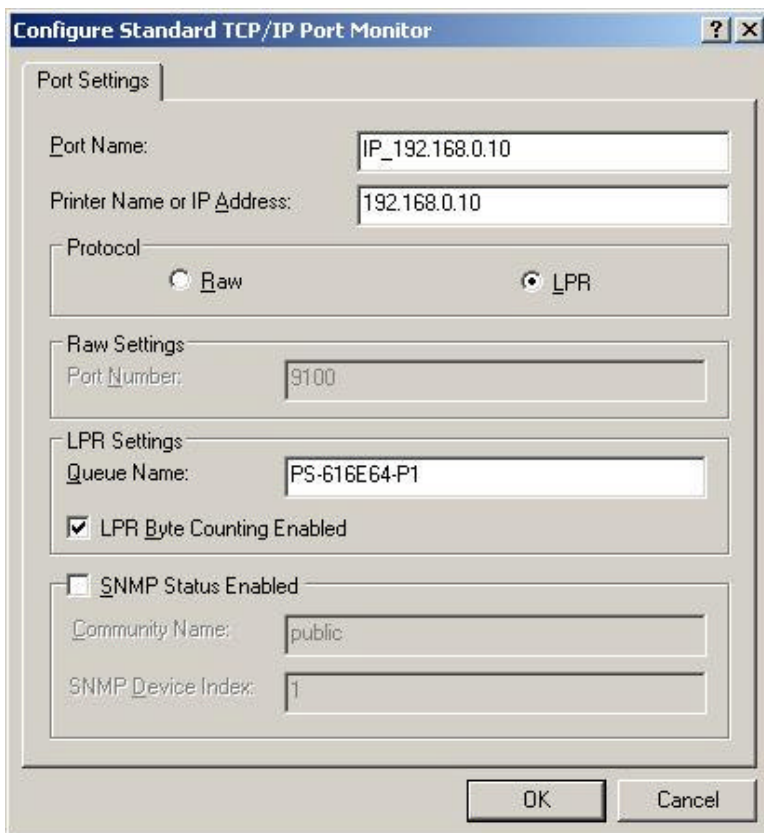
Port Name: IP_192.168.0.10

< Back Next > Cancel

7. The wizard will then ask for Additional Port Information. Select Custom and then click on Settings.



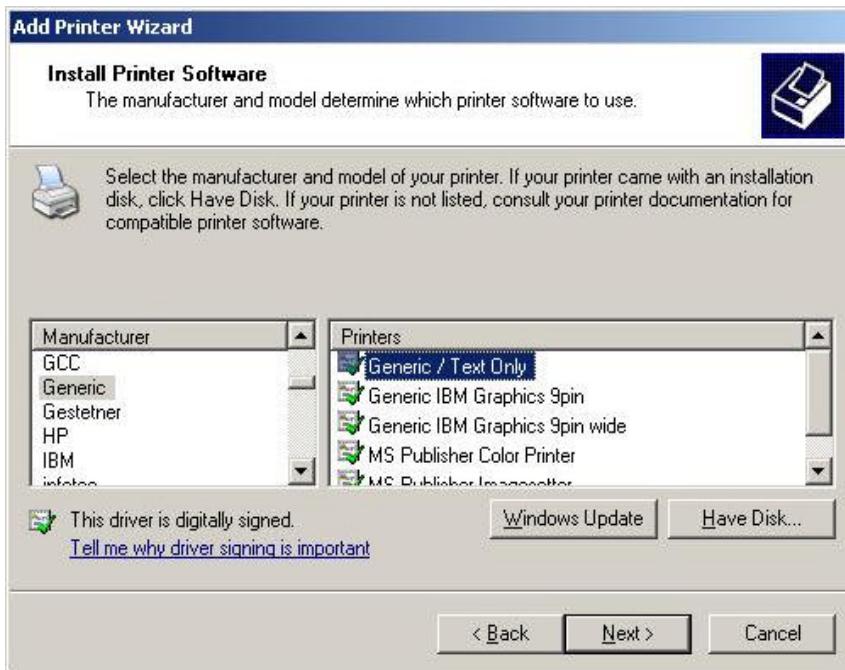
8. The 'Configure Standard TCP/IP Port Monitor' will then come up. Under protocol, select LPR. In the 'LPR Settings' section, set the 'Queue Name' to the name of the port registered on the print server. The name shown in the example below is using the default format for port 1 (i.e. PS-616E64-P1). Click OK.



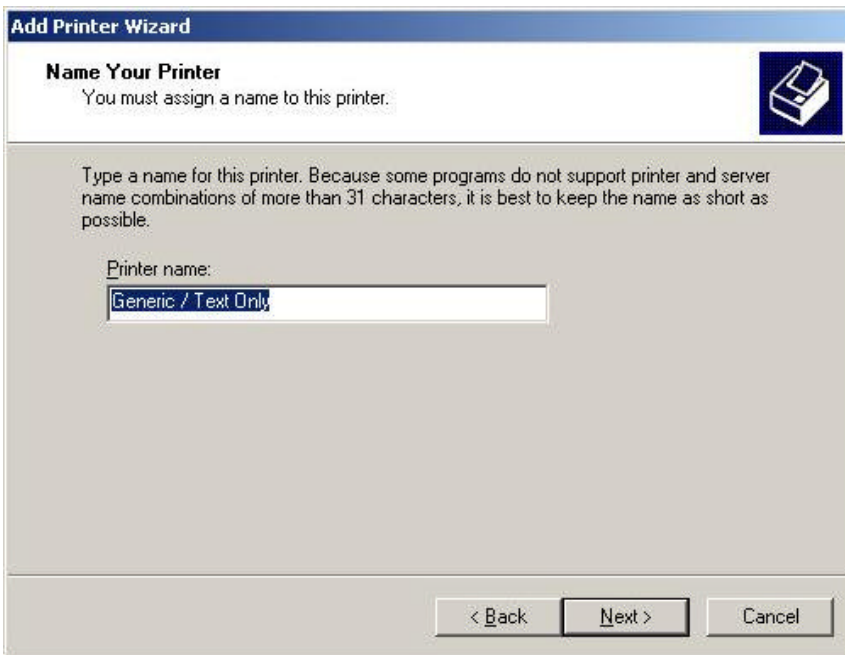
9. The wizard will then confirm the details of the new TCP/IP Printer Port. Click on Finish to complete the wizard.



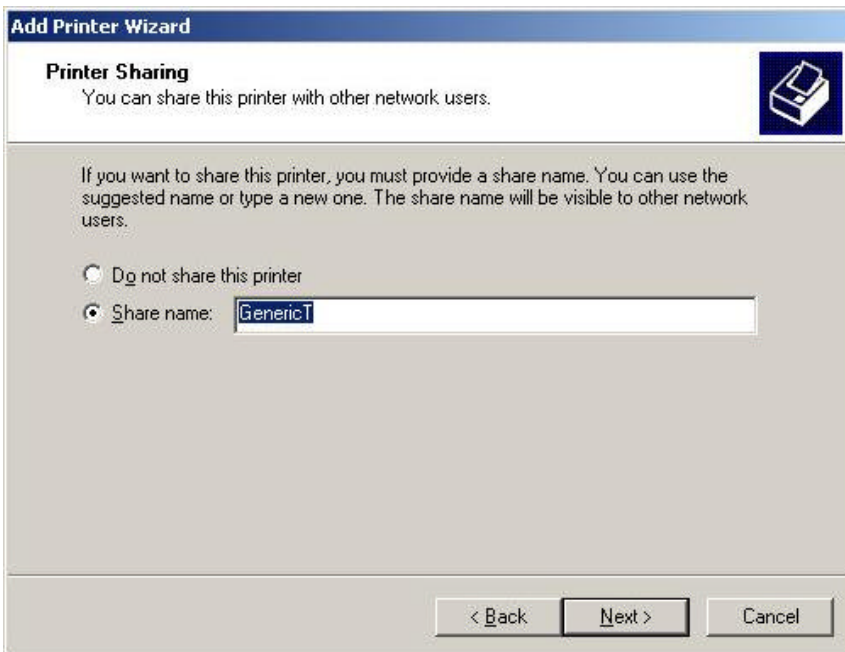
10. The 'Add printer Wizard' will then start the installation of the Printer drivers. Please follow this wizard through and install the drivers for your printer accordingly.



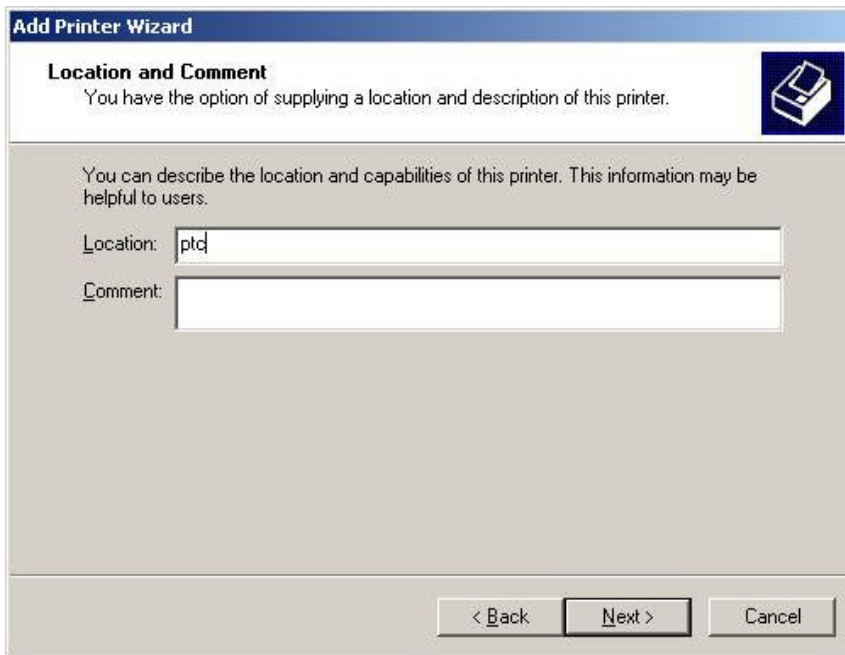
11. The wizard will then ask for the name of your printer. Enter the appropriate name for your printer.



12. Choose whether you wish to share the printer with other network users and enter an appropriate name.

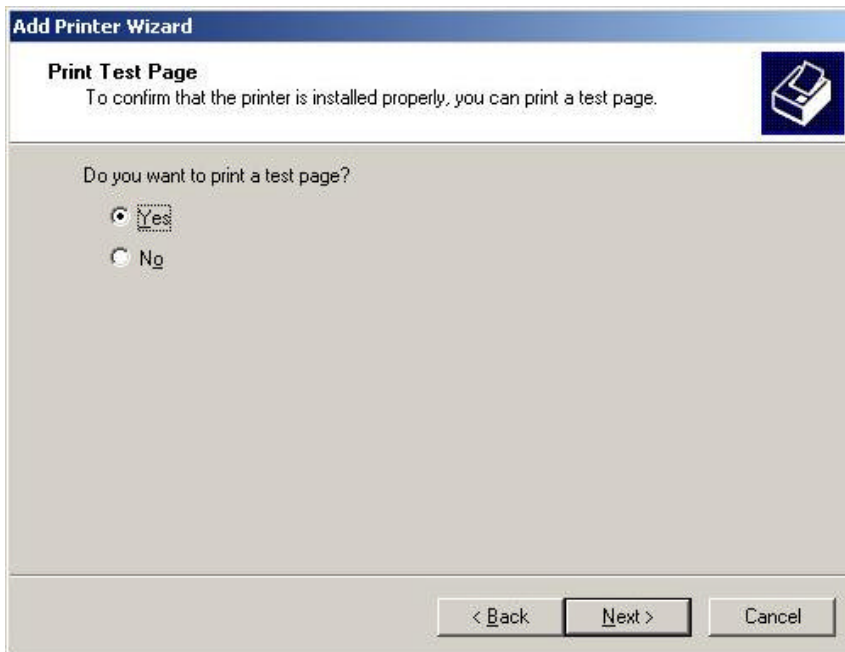


13. The wizard will then ask for the 'Location and Comment' for the printer. Put in the appropriate details for the printer.



The screenshot shows a dialog box titled "Add Printer Wizard" with a printer icon in the top right corner. The main heading is "Location and Comment" and the text below it says "You have the option of supplying a location and description of this printer." Below this, there is a sub-heading "You can describe the location and capabilities of this printer. This information may be helpful to users." There are two input fields: "Location:" with the text "ptc" entered, and "Comment:" which is empty. At the bottom, there are three buttons: "< Back", "Next >", and "Cancel".

14. The wizard will then ask if you would like to print a test page. Select 'Yes' to confirm it is printing correctly. Once done, click Next.



The screenshot shows a dialog box titled "Add Printer Wizard" with a printer icon in the top right corner. The main heading is "Print Test Page" and the text below it says "To confirm that the printer is installed properly, you can print a test page." Below this, there is a question "Do you want to print a test page?" with two radio button options: "Yes" (which is selected) and "No". At the bottom, there are three buttons: "< Back", "Next >", and "Cancel".

15. The wizard will confirm that you have successfully installed the printer. Click Finish to complete the installation.



~ End of Document ~