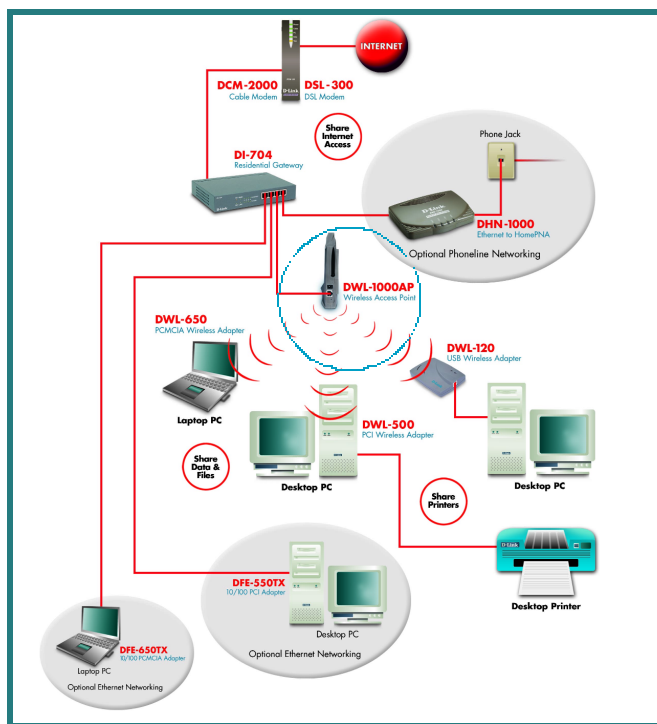


DWL-1000AP Wireless Access Point

1 Connecting the DWL-1000AP

Just plug your DWL-1000AP into the hub, switch or residential gateway within your network, and you are up and running!



When you are networking your DWL-1000AP with other D-Link Air products,

NO CONFIGURATION IS NEEDED! Your DWL-1000AP has default settings that will work with other D-Link Air products, right out of the box.

If there is a need, you may configure your system using the D-Link AP Manager. You can manage your DWL-1000AP from a wired or a wireless connection. **Note: When using WEP encryption, it is strongly recommended that you run the AP Manager on a wired connection.**

Note: If you need to reset the DWL-1000AP, please refer to Appendix C.

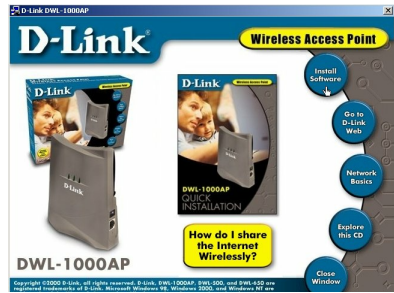
If you wish to run the **AP Manager**, please complete the following steps.

2

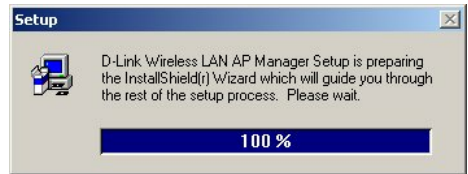
Installing the AP Manager

Insert the CD for the DWL-1000AP Manager, this screen will appear.

Click on “Install Software.”

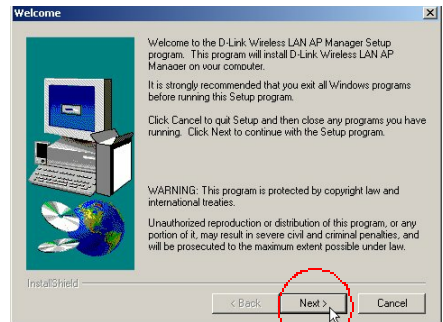


This screen will appear briefly.



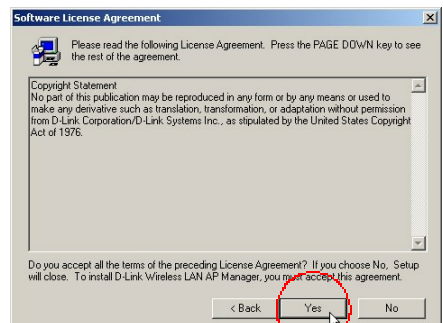
At the “Welcome” screen,

Click **Next** to continue the installation.



At this screen,

Click **Yes** to continue.



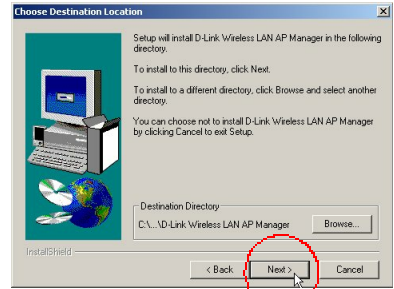
2

Installing the AP Manager *continued*

To install the DWL 1000AP Manager into this location,

Click Next.

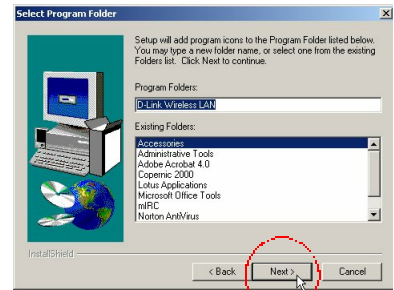
(Otherwise, click on “Browse” to select an alternate destination.)



At the next screen,

Click Next to select the default Program Folder.

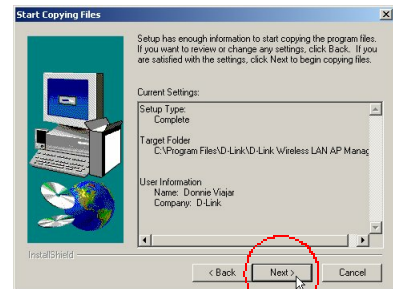
(Otherwise choose a file from the “Existing Folders” list.)



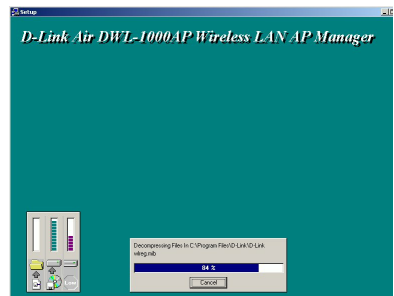
Windows will begin copying files. To accept the settings,

Click Next to continue.

(If you wish to change the settings, press the “Back” button.)



This window will appear briefly. Windows is copying the files.



2

Installing the AP Manager *continued*

At this screen, select “Yes, launch the program file.”

Click “Finish” to complete the setup of your DWL-1000AP Manager.



3

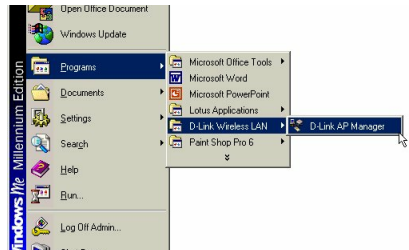
Running the AP Manager

At the “Welcome” screen,

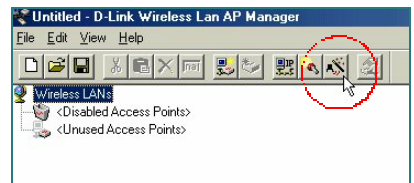
Click Next to begin using the DWL-1000AP Manager.

-OR-

Go to **START>PROGRAM>D-LINK WIRELESS LAN>D-LINK AP MANAGER**



When this screen is displayed, select the icon to start the Installation Wizard, as shown.



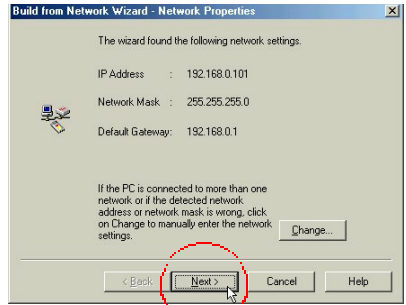
3

Running the AP Manager *continued*

The Network Wizard will find the network settings.

(Select “Change” to choose alternate settings.)

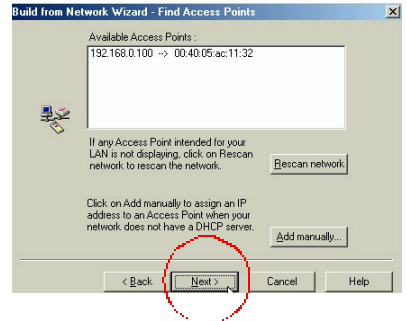
Click Next to accept the settings.



The next screen will display the available access point.

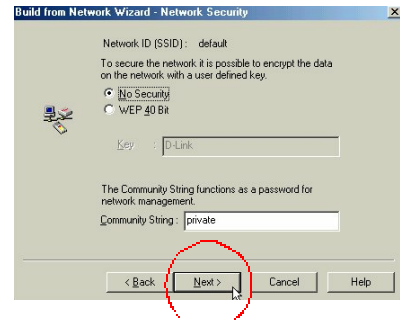
Click Next.

(If the Access Point is not discovered, please refer to Appendix A to manually assign an IP address.)



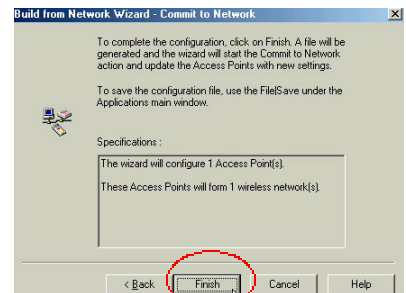
At the following screen,

Click Next



At the next window,
Click Finish.

For help in saving your configuration, please see Appendix B.

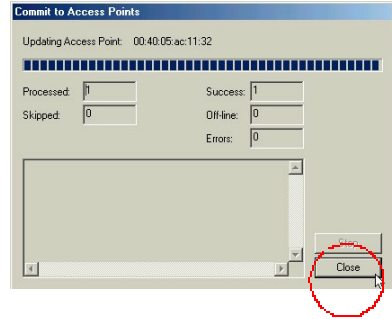


3

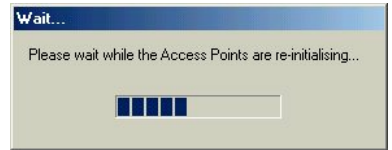
Running the AP Manager *continued*

When this screen appears,

Click Close.



The following screen will appear briefly.
The AP Manager has completed configuring
your system.

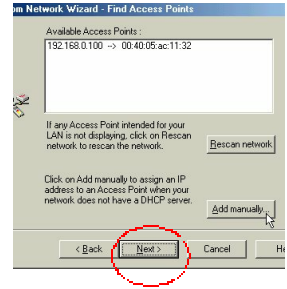


Your AP Manager is now ready to use.

APPENDIX A

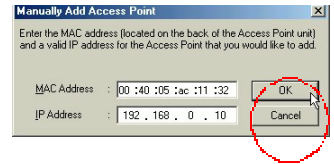
When a DHCP server is not available in the local network, manually assign the IP address to the Access Point.

Click on “Add Manually.”



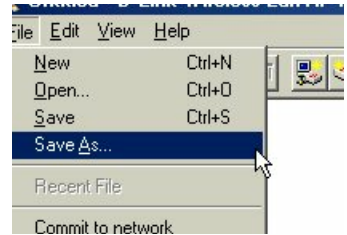
At the next dialogue box, enter the MAC address that is shown on the back of the Access Point unit and a valid IP address for the Access Point that you would like to add.

Click OK to complete the addressing process.

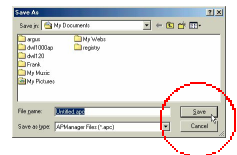


APPENDIX B

To save the AP Manager configuration, go to **FILE>SAVE AS** in your AP Manager window.



In the next dialogue box, name the file and save it to the folder of your choice. Your AP Manager configuration is now saved.



Resetting the DWL-1000AP

To reset your DWL-1000AP to its original settings, please insert a paper clip into the small opening under the RJ-45 cable port as shown in the photo.

Press gently down on the clip until the ACT LED lights up. Hold down the clip until the light goes out. Remove the clip.

The unit is now reset.

