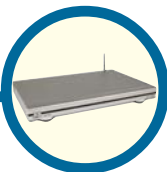


# D-Link<sup>®</sup> Quick Installation Guide

This product works with the following operating system software:

Windows XP, 2000, Me, and 98SE



**DSM-320**  
**mediaLOUNGE**  
Entertainment Network  
Wireless Media Player

## Before You Begin

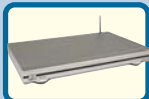
You will need the following:

- Windows XP, 2000, Me, or 98SE, 500MHz or above based computer with a minimum of 128MB RAM, a CD-ROM drive, 20MB of available hard drive space and a wireless or Ethernet network.

## Check Your Package Contents

These are the items included with your purchase:

If any of the below items are missing, please contact your reseller.



**DSM-320** Wireless Media Player



Installation CD (Contains D-Link<sup>®</sup> Media Server Software, Quick Installation Guide, and Manual)



Antenna



Ethernet (CAT 5 UTP/Straight Through) Cable



Standard Composite RCA Audio/Video Cable



S-Video Cable



Remote Control with Batteries

# 1

## Installing the D-Link® Media Server Software

Install the D-Link® Media Server Software on each PC that contains audio, video, or photo files you wish to use with the DSM-320.

Follow the steps in this section to install the software.

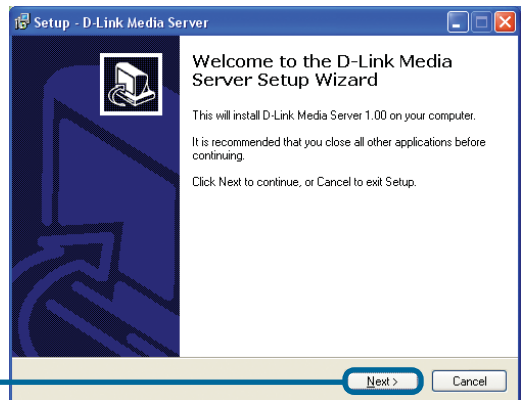
Insert the **DSM-320 CD-ROM** into the CD-ROM drive and the following screen will appear.

Click on **D-Link® Media Server Installer** and select the appropriate operating system.



The D-Link® Media Server Setup Wizard will appear.

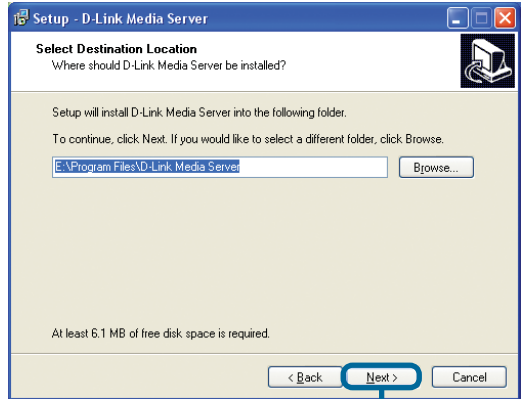
Click **Next**



# 1

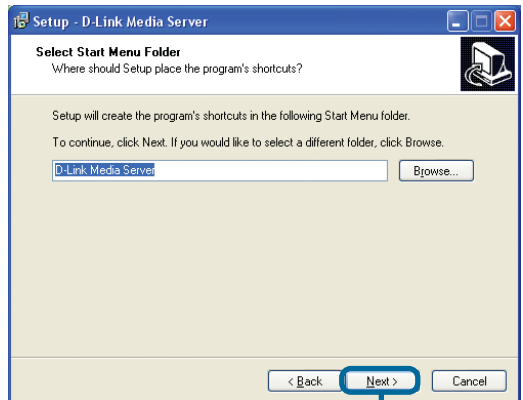
## Installing the D-Link® Media Server Software (continued)

Choose a destination folder or accept the default location.



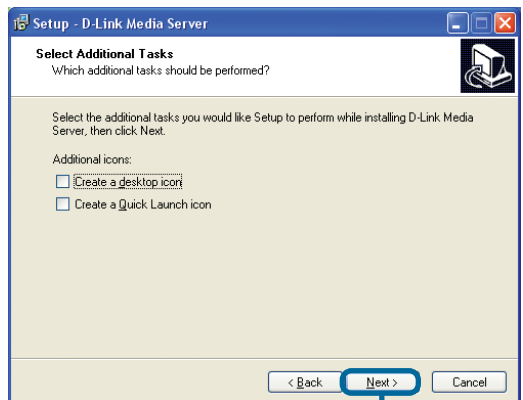
Click **Next**

Choose a start menu folder or accept the default location.



Click **Next**

Select the icons you want created.

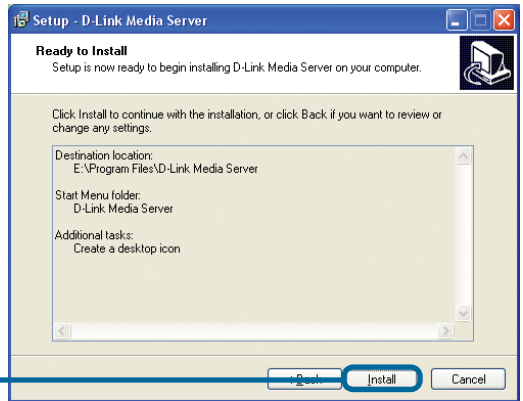


Click **Next**

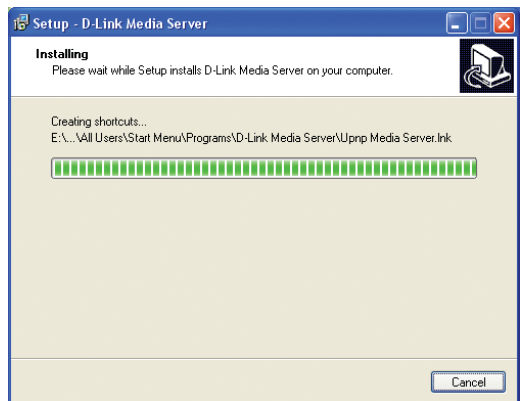
# 1

## Installing the D-Link® Media Server Software (continued)

Click **Install**



The necessary software will be copied to the specified locations on your computer.



Check **Launch D-Link® Media Server**



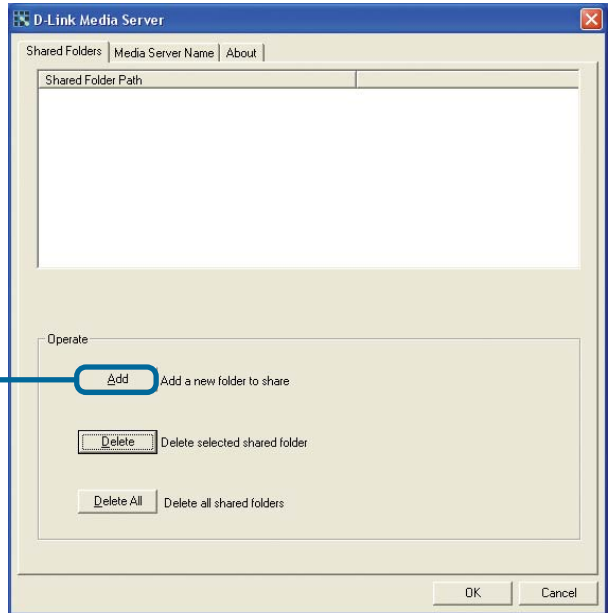
Click **Finish**

# 2

## Configuring the D-Link® Media Server Software

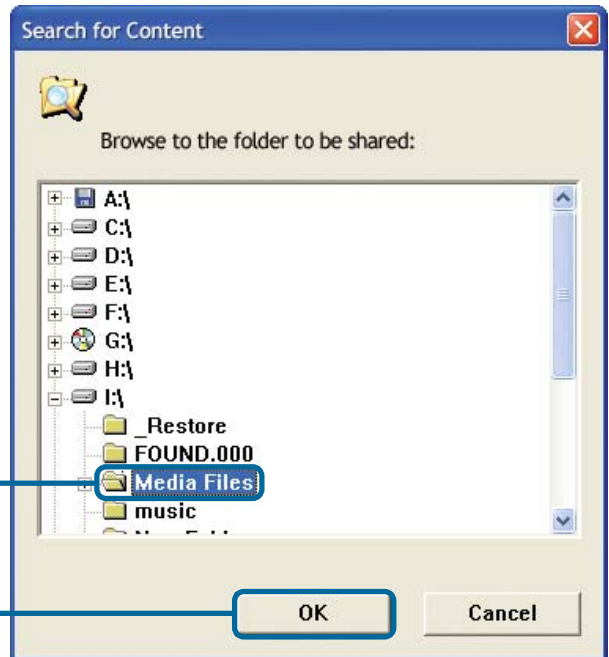
The Shared Folders tab is where you select the folders that contain your audio, video, and photo files.

Click **Add**



Select the **folder** containing the files you wish to share

Click **OK**

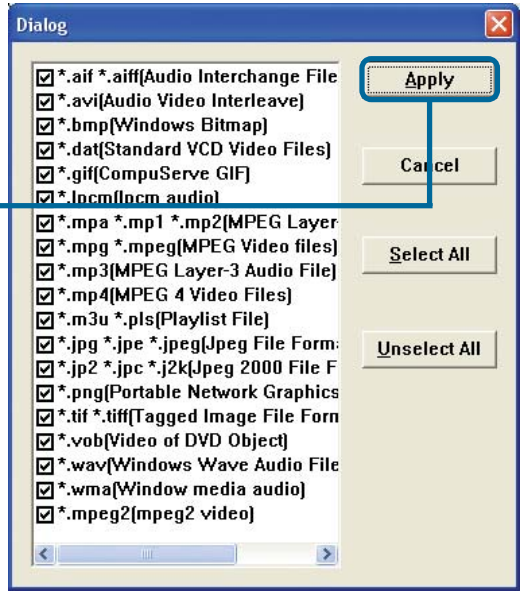


# 2

## Configuring the D-Link® Media Server Software (continued)

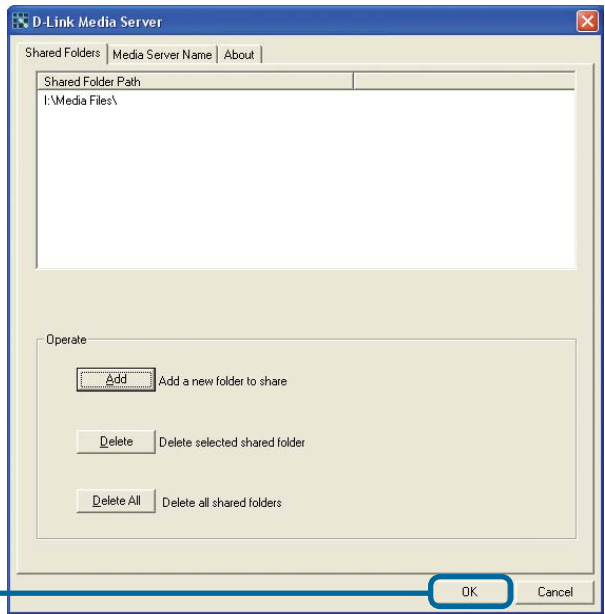
Select all of the file types that you wish to share.

Click **Apply**



Repeat the steps until all of the folders containing audio, video, and photos you want to share have been added.

Click **OK**



# 3

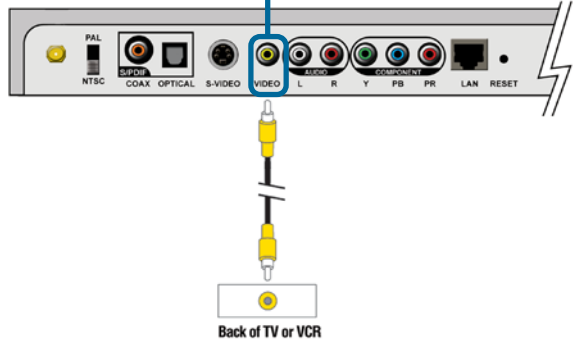
## Connecting the DSM-320

All audio, video, and networking connections are located on the rear panel of the DSM-320:

Select one of three ways to connect video to your DSM-320:

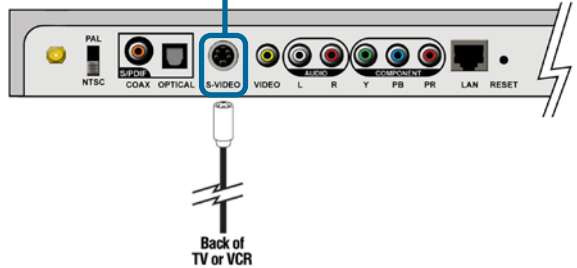
### • Composite Video Connector

Plug the supplied yellow video cable into the DSM-320 and the matching opposite end of the cable to your television input.



### • S-Video Connector

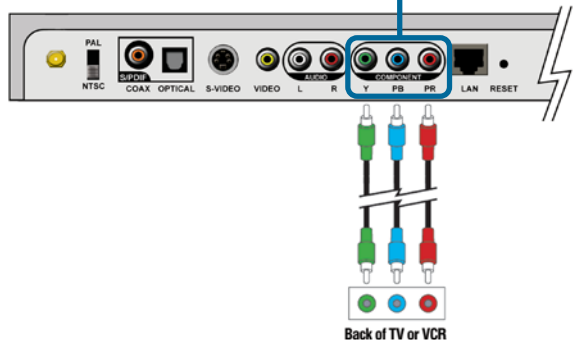
Plug the supplied S-video cable into the S-video connector and the opposite end in to the S-video connector on your television.



### • Component Connectors

Match the color coded cables to the matching connectors on the DSM-320 and to the component video input of your television.

*Note: This cable is not supplied.*



# 3

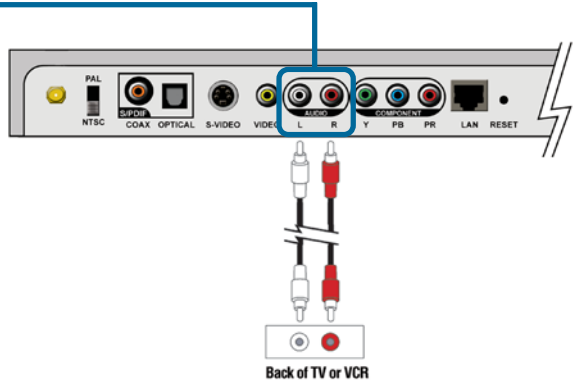
## Connecting the DSM-320 (continued)

Select one of three ways to connect audio to your DSM-320:

### • Composite Audio

Plug the supplied red and white connectors into the color-coded matching jacks on the DSM-320.

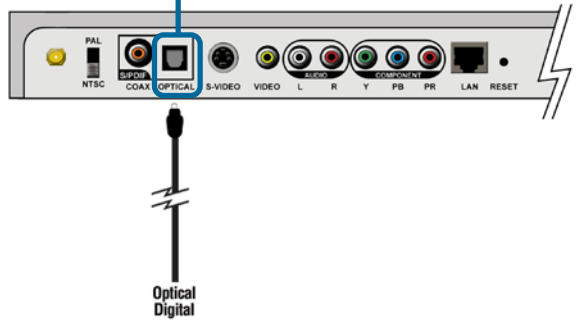
Plug the opposite ends to the matching jacks on your television or audio/video system.



### • Optical Digital Audio

Connect an optical audio connector into the DSM-320 and the matching opposite end of the cable to the audio input of your audio system.

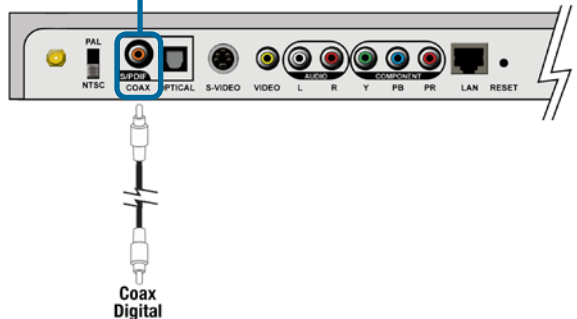
*Note: This cable is not supplied.*



### • Coaxial Digital Audio

Connect a coaxial audio connector into the DSM-320 and the matching opposite end of the cable to the audio input of your audio system.

*Note: This cable is not supplied.*





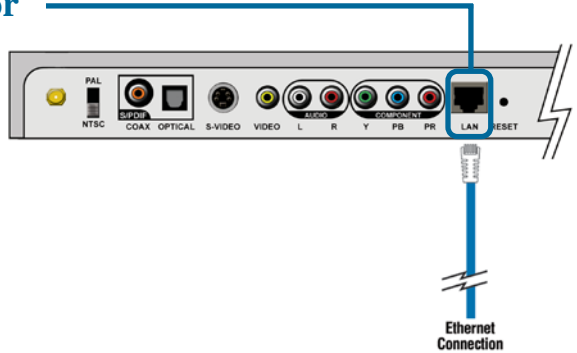
# 3

## Connecting the DSM-320 (continued)

Select one of two ways to connect a network to your DSM-320:

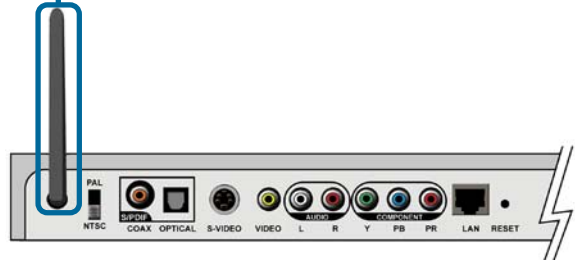
- **RJ-45 Ethernet Connector**

Connect the supplied Ethernet cable to the network cable connector and attach it to the network.



- **Antenna**

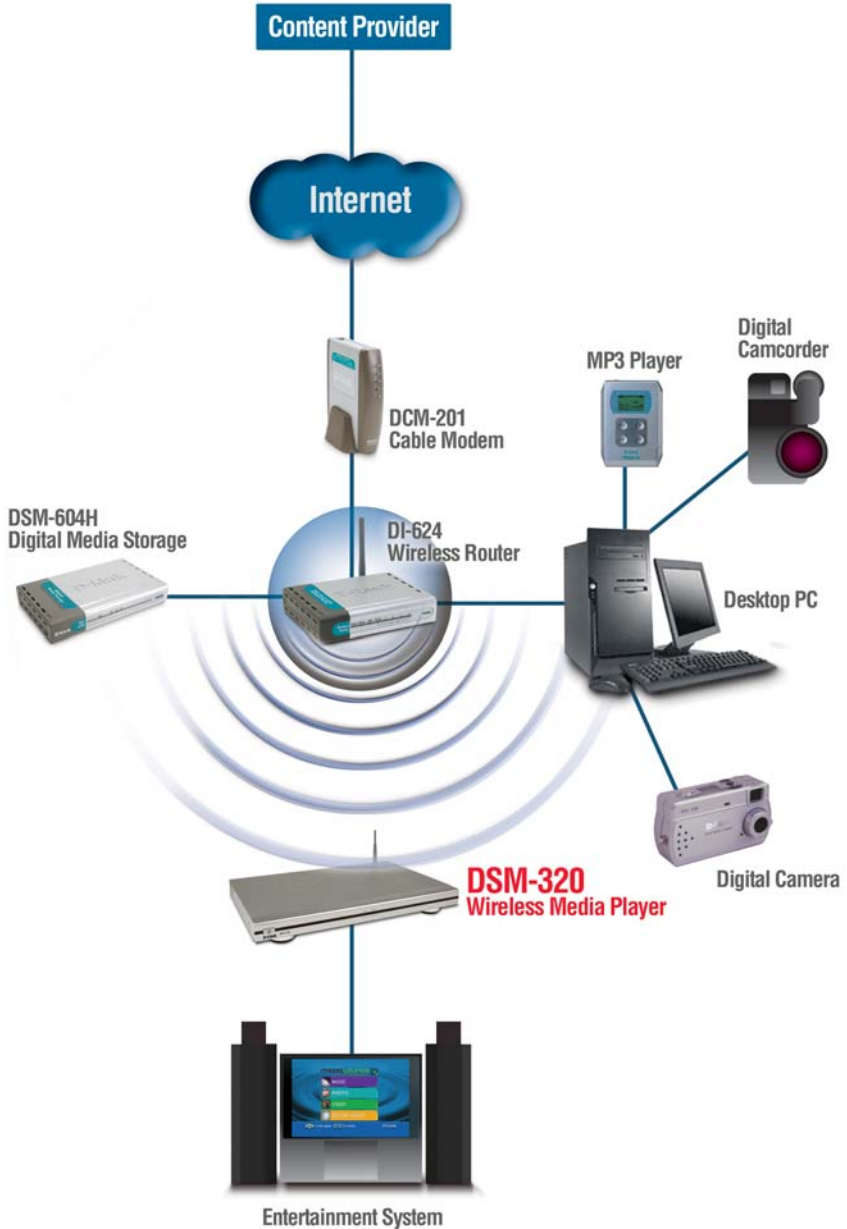
Attach the supplied antenna by threading it onto the antenna connector. Be sure the antenna is secure and in an upright position.



# 3

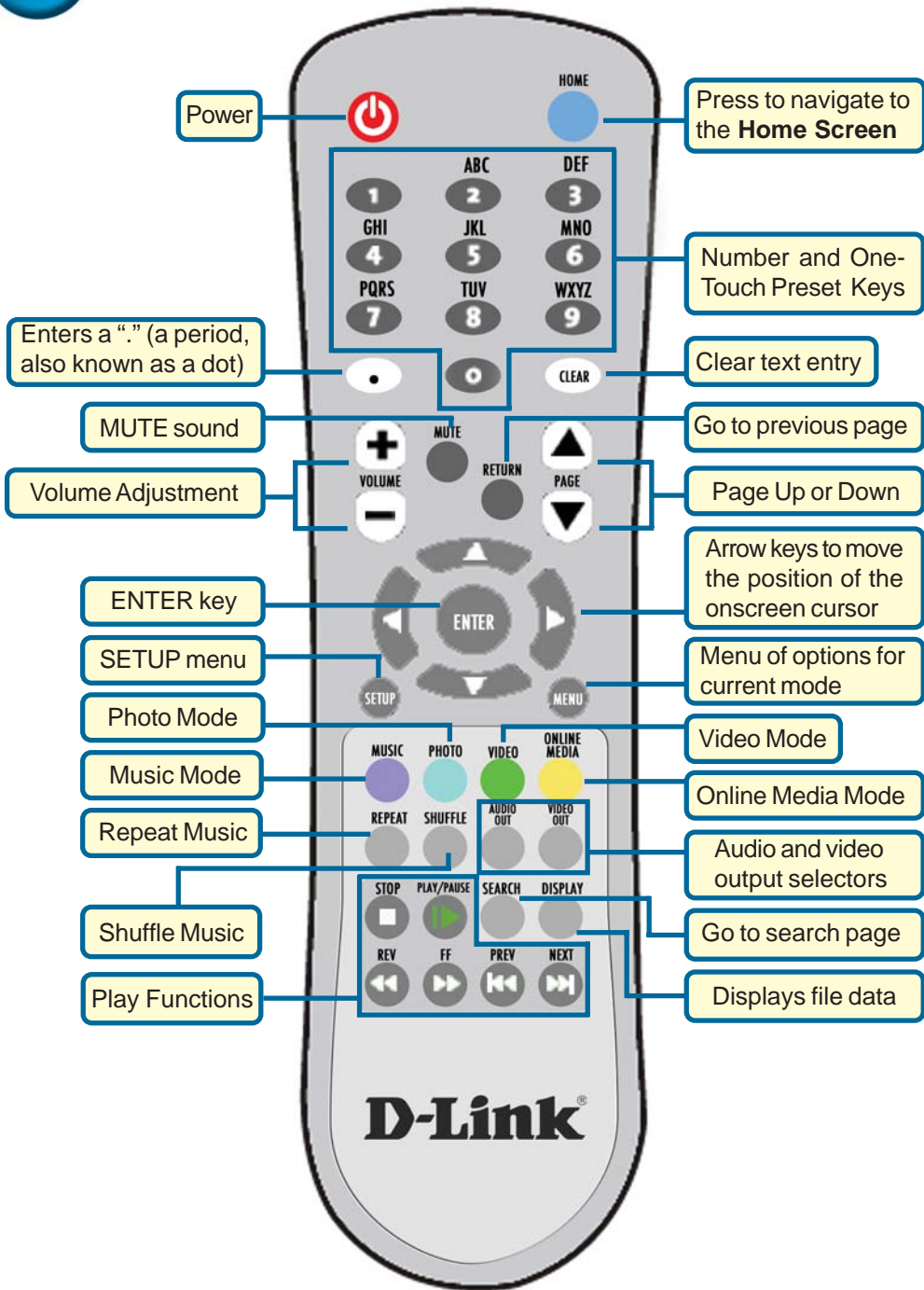
## Connecting the DSM-320 (continued)

Below is a diagram displaying what your network might look like once all of the connections have been made to the MediaLounge™ DSM-320 Wireless Media Player.



# 4

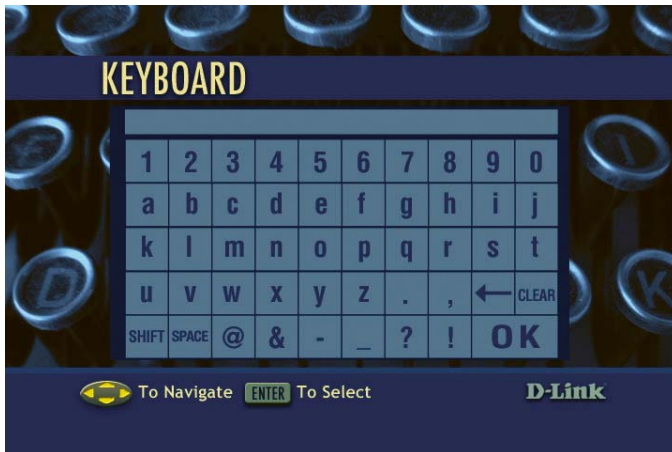
## Using the Remote Control



# 4

## Using the Remote Control (continued)

Whenever you need to enter text, press ENTER on the remote and the onscreen keyboard will appear.



The keyboard is used for naming your DSM-320 and performing searches for music, photos, or video. To use the keyboard, highlight a character with the arrow buttons on the remote and press **ENTER**. Highlight and select **OK** when you are finished entering text.

# 5

## DSM-320 Setup Wizard

Upon initial startup, the DSM-320 displays the Setup Wizard. The Setup Wizard will guide you through the necessary steps for configuring the DSM-320.

*Note: Step 3 of 6 and Step 4 of 6 are only necessary for wireless network configurations.*

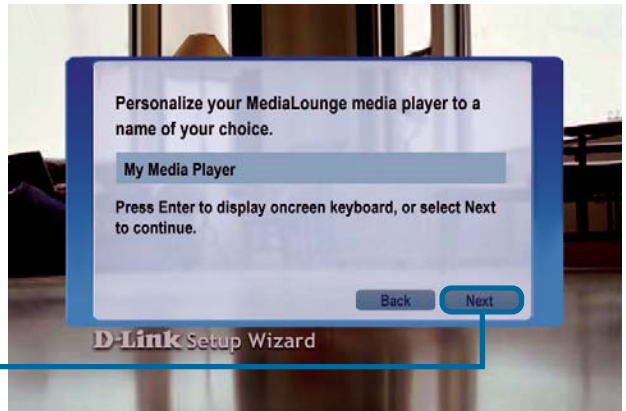


Click **Next** to begin the DSM-320 Setup Wizard

# 5

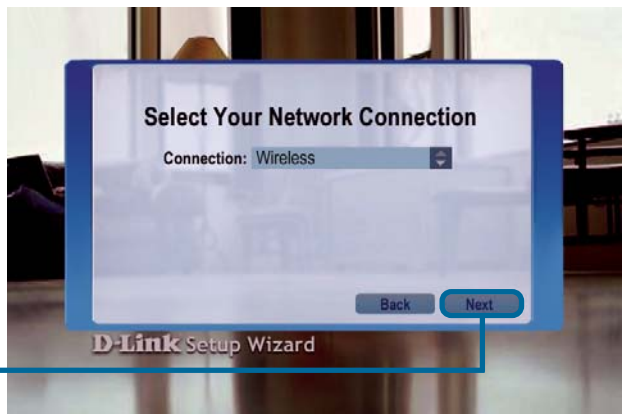
## DSM-320 Setup Wizard (continued)

Type in a name of your choice or select the default setting.

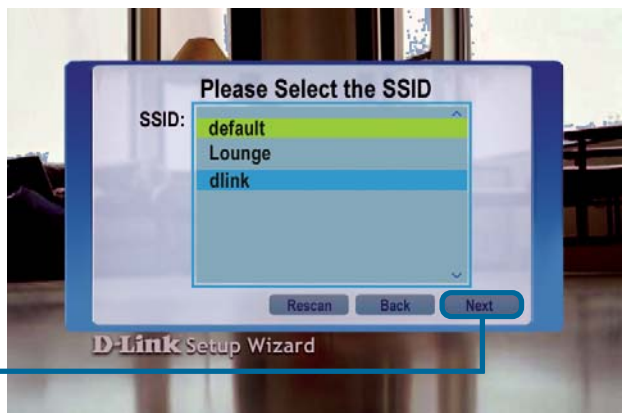


Select your network connection type.

If selecting **Wired**, skip to **Your Current Network Settings** on page 14.



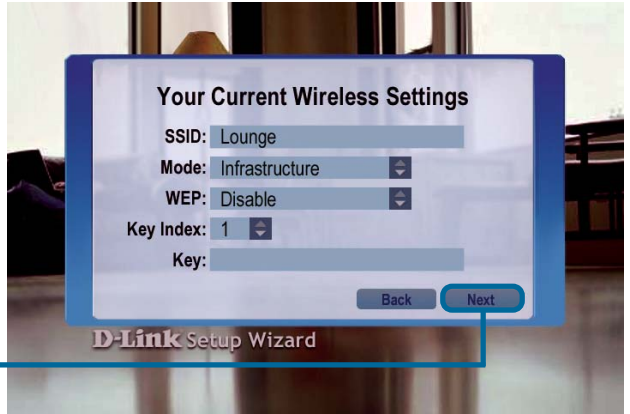
For wireless network connections, **select the SSID** from the network.



# 5

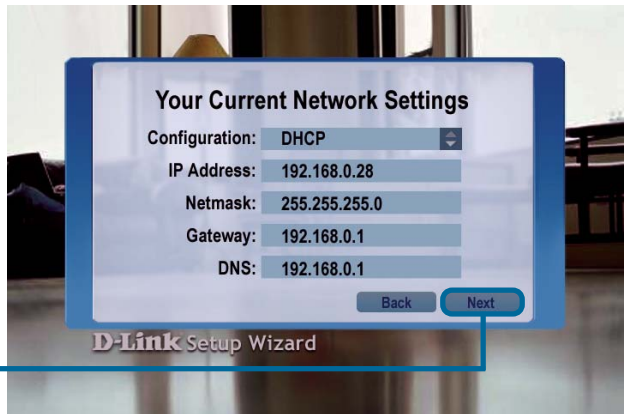
## DSM-320 Setup Wizard (continued)

Your current wireless settings are displayed and can be changed at this point.



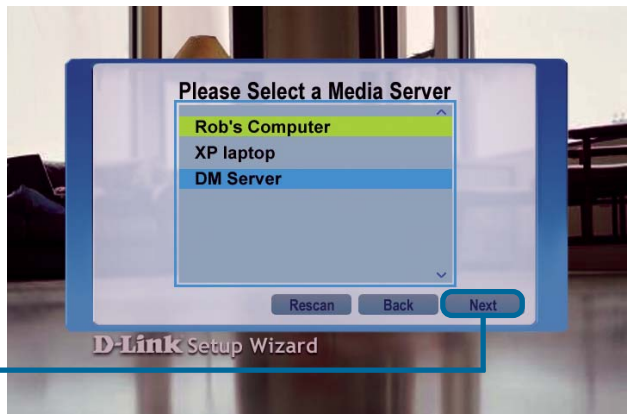
Click **Next** to continue

Your current network settings are displayed and can be changed at this point.



Click **Next** to continue

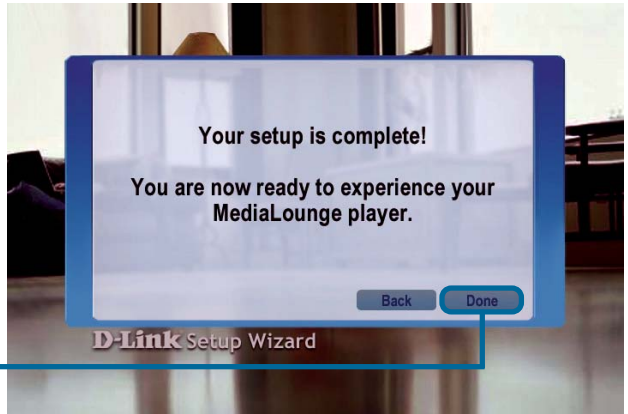
Select a Media Server from the list.



Click **Next** to continue

# 5

## DSM-320 Setup Wizard (continued)



Click **Done** to finish

Your MediaLounge™ DSM-320 is now ready to stream music, photo, and video content for enjoyment on your home entertainment center.



## Your setup is complete!

For detailed usage instructions and information on supported file types, please refer to the User Manual that is located on the MediaLounge™ CD-ROM.

# Technical Support

You can find software updates and user documentation on the D-Link website.

D-Link provides free technical support for customers within the United States and within Canada for the duration of the warranty period on this product.

U.S. and Canadian customers can contact D-Link Technical Support through our website, or by phone.

## Tech Support for customers within the United States:

### ***D-Link Technical Support over the Telephone:***

(877) 453-5465

24 hours a day, seven days a week.

### ***D-Link Technical Support over the Internet:***

<http://support.dlink.com>

[email:support@dlink.com](mailto:support@dlink.com)

## Tech Support for customers within Canada:

### ***D-Link Technical Support over the Telephone:***

(800) 361-5265

Monday to Friday 8:30am to 9:00pm EST

### ***D-Link Technical Support over the Internet:***

<http://support.dlink.ca>

[email:support@dlink.ca](mailto:support@dlink.ca)

**D-Link<sup>®</sup>**  
**Building Networks for People**